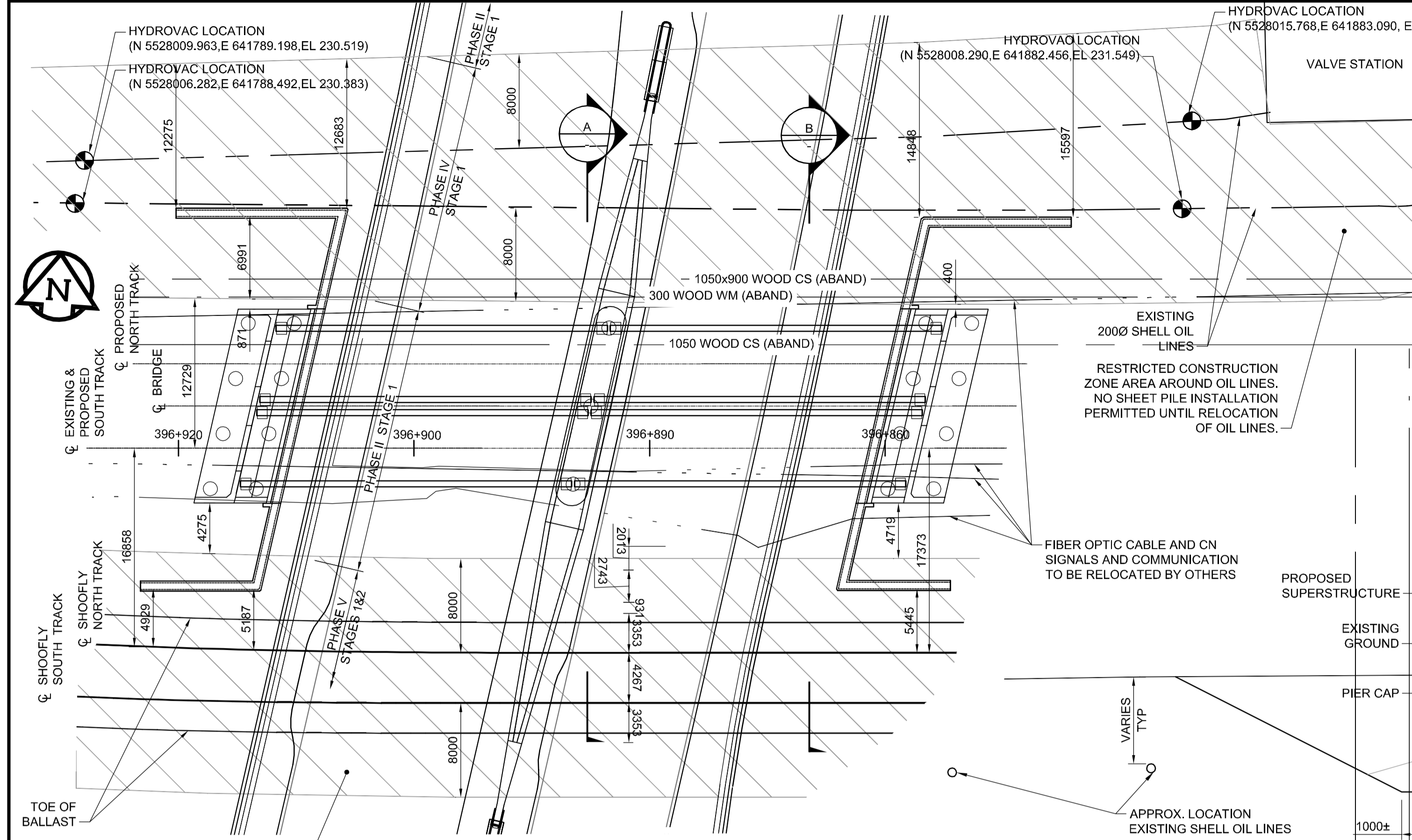


AT - 841694

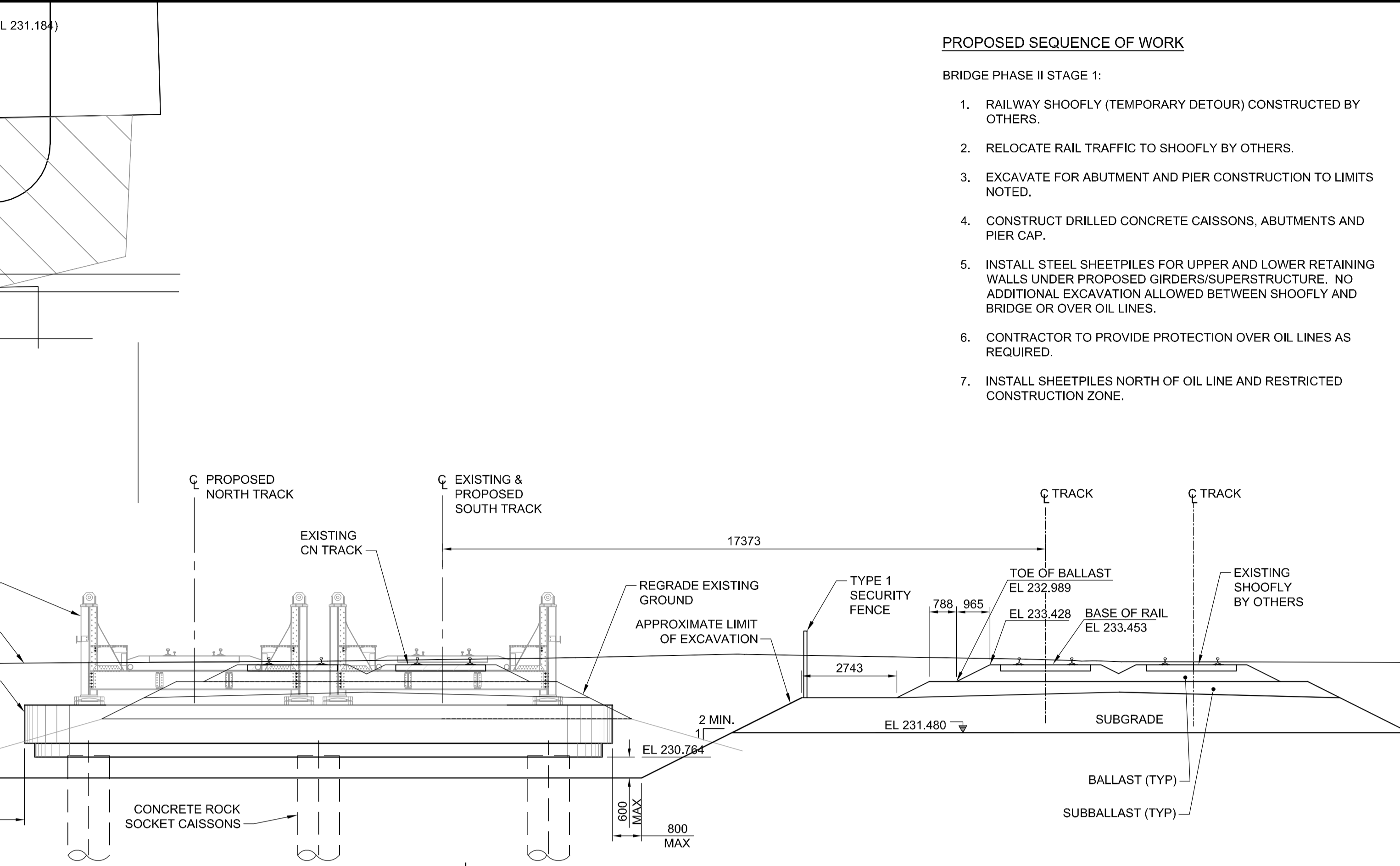
2013-11-21

J:\COMMON_DEFAULT.CIB



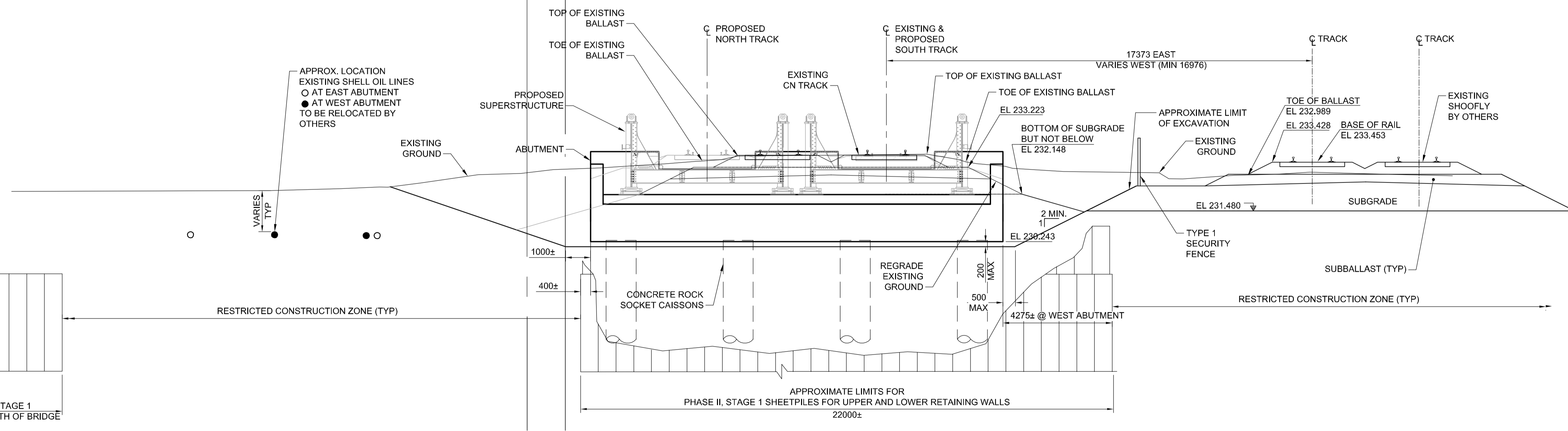
PLAN
Scale 1:300

RESTRICTED CONSTRUCTION ZONE AREA AROUND SHOOFLY. NO SHEET PILE INSTALLATION PERMITTED UNTIL RELOCATION OF RAIL TRAFFIC TO NEW BRIDGE.



A SECTION - PIER (PHASE II, STAGE 1)
Scale 1:100

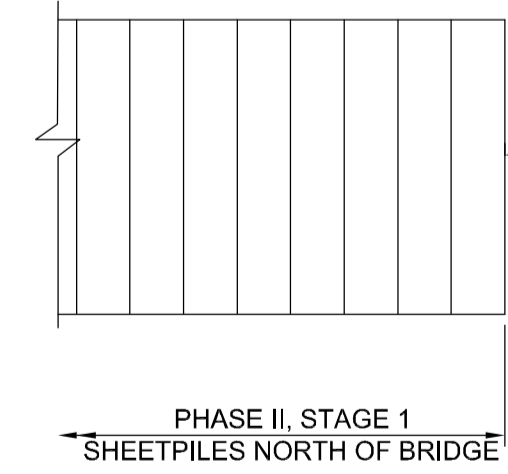
- PROPOSED SEQUENCE OF WORK**
- BRIDGE PHASE II STAGE 1:
1. RAILWAY SHOOFLY (TEMPORARY DETOUR) CONSTRUCTED BY OTHERS.
 2. RELOCATE RAIL TRAFFIC TO SHOOFLY BY OTHERS.
 3. EXCAVATE FOR ABUTMENT AND PIER CONSTRUCTION TO LIMITS NOTED.
 4. CONSTRUCT DRILLED CONCRETE CAISSONS, ABUTMENTS AND PIER CAP.
 5. INSTALL STEEL SHEETPILES FOR UPPER AND LOWER RETAINING WALLS UNDER PROPOSED GIRDERS/SUPERSTRUCTURE. NO ADDITIONAL EXCAVATION ALLOWED BETWEEN SHOOFLY AND BRIDGE OR OVER OIL LINES.
 6. CONTRACTOR TO PROVIDE PROTECTION OVER OIL LINES AS REQUIRED.
 7. INSTALL SHEETPILES NORTH OF OIL LINE AND RESTRICTED CONSTRUCTION ZONE.



B SECTION - EAST ABUTMENT (PHASE II, STAGE 1)
Scale 1:100

(WEST ABUTMENT SIMILAR)

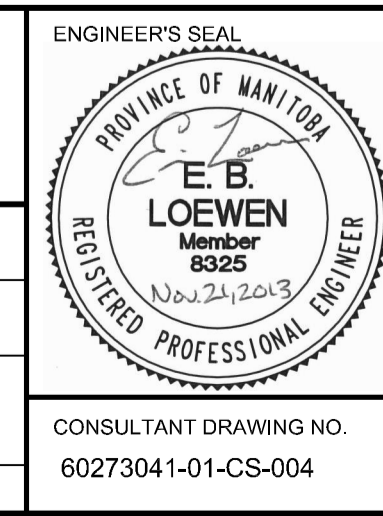
- NOTES:**
1. HYDRO EXCAVATION MAY BE REQUIRED FOR OIL LINES, FIBRE OPTIC CABLE AND CN SIGNALS AND COMMUNICATIONS.
 2. SEE PLAN FOR APPROXIMATE LOCATION OF FIBER OPTIC CABLE AND CN SIGNALS AND COMMUNICATIONS.
 3. SEE SPECIFICATIONS FOR OVERALL PROJECT PHASES AND STAGES.



LOCATION APPROVED UNDERGROUND STRUCTURES	
SUPV. U/G STRUCTURES COMMITTEE	DATE
NOTE: LOCATION OF UNDERGROUND STRUCTURES AS SHOWN ARE BASED ON THE BEST INFORMATION AVAILABLE, BUT NO GUARANTEE IS GIVEN THAT ALL EXISTING UTILITIES ARE SHOWN OR THAT THE GIVEN LOCATIONS ARE EXACT. CONFIRMATION OF EXISTENCE AND EXACT LOCATION OF ALL SERVICES MUST BE OBTAINED FROM THE INDIVIDUAL UTILITIES BEFORE PROCEEDING WITH CONSTRUCTION.	

B.M. ELEV.	
NO.	REVISIONS
0	ISSUED FOR TENDER
	NO. REVISIONS
	DATE
	BY
	DATE

AECOM	
DESIGNED BY	FT/JS
CHECKED BY	EBL
DRAWN BY	DJH
APPROVED BY	EBL
HOR. SCALE:	AS NOTED
VERTICAL:	AS NOTED
RELEASSED FOR CONSTRUCTION BY:	
DATE	2013-06-04
DATE	



THE CITY OF WINNIPEG PUBLIC WORKS DEPARTMENT

PLESSIS ROAD TWINNING AND GRADE SEPARATION AT CN REDDITT SUBDIVISION CONTRACT 3

CITY DRAWING NUMBER U238-2014-2004
SHEET 04 OF 37

CONSULTANT DRAWING NO. 60273041-01-CS-004

BRIDGE STAGING PLAN - SHEET 1

CS-0004

BID OPPORTUNITY NO. 712-2013