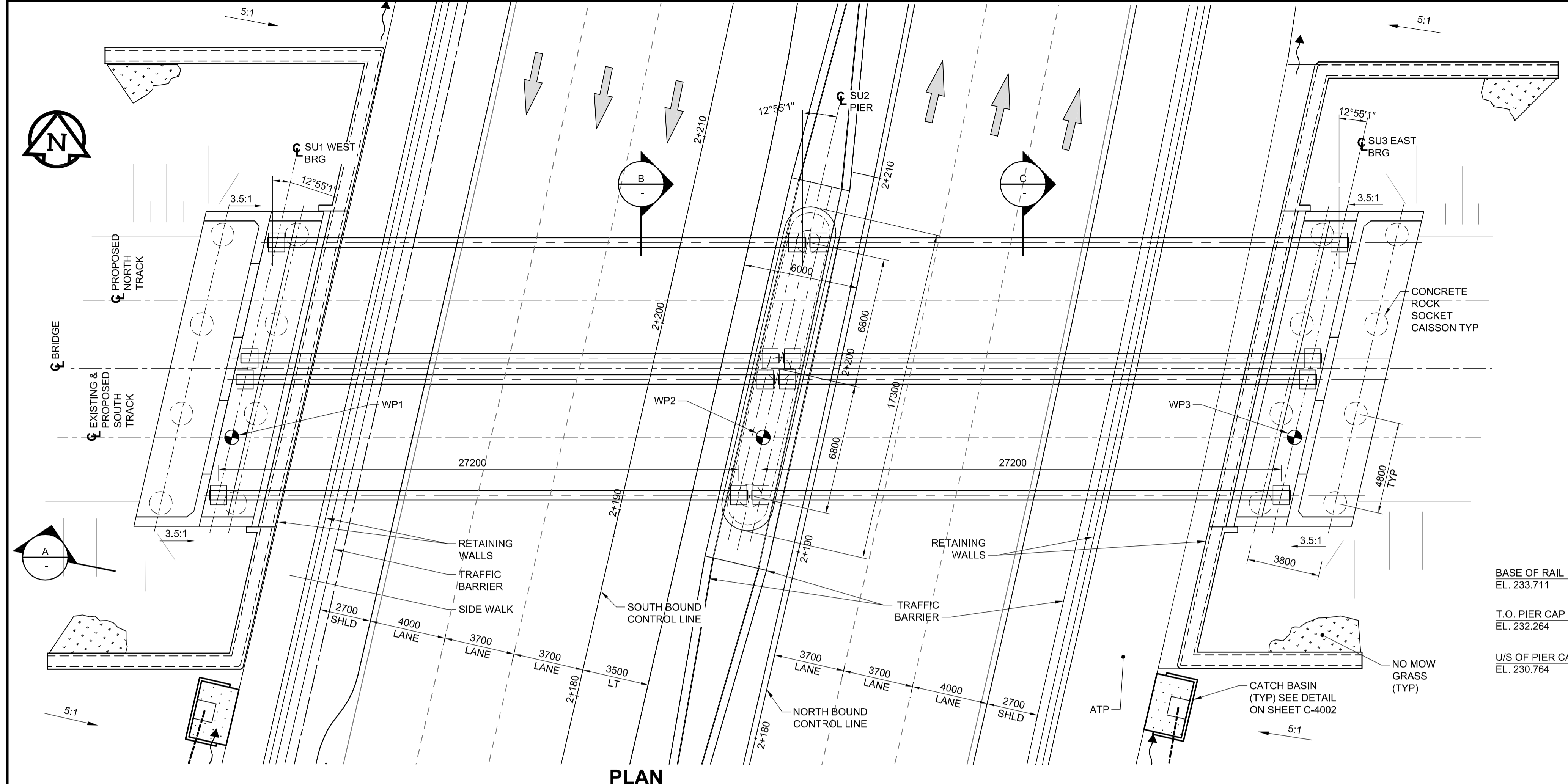
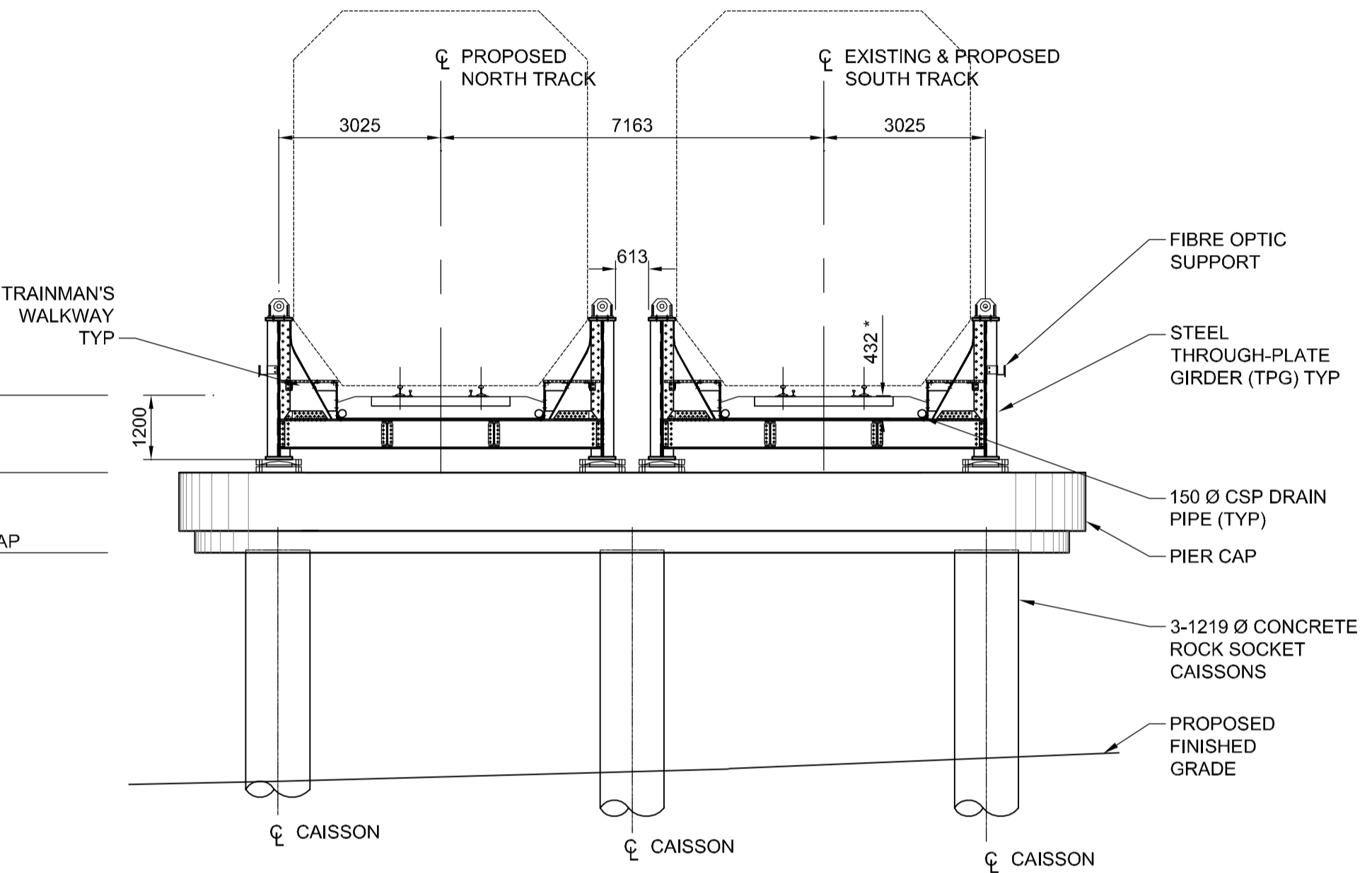


NOTES:
FOR GENERAL NOTES SEE SHEET CS-0001

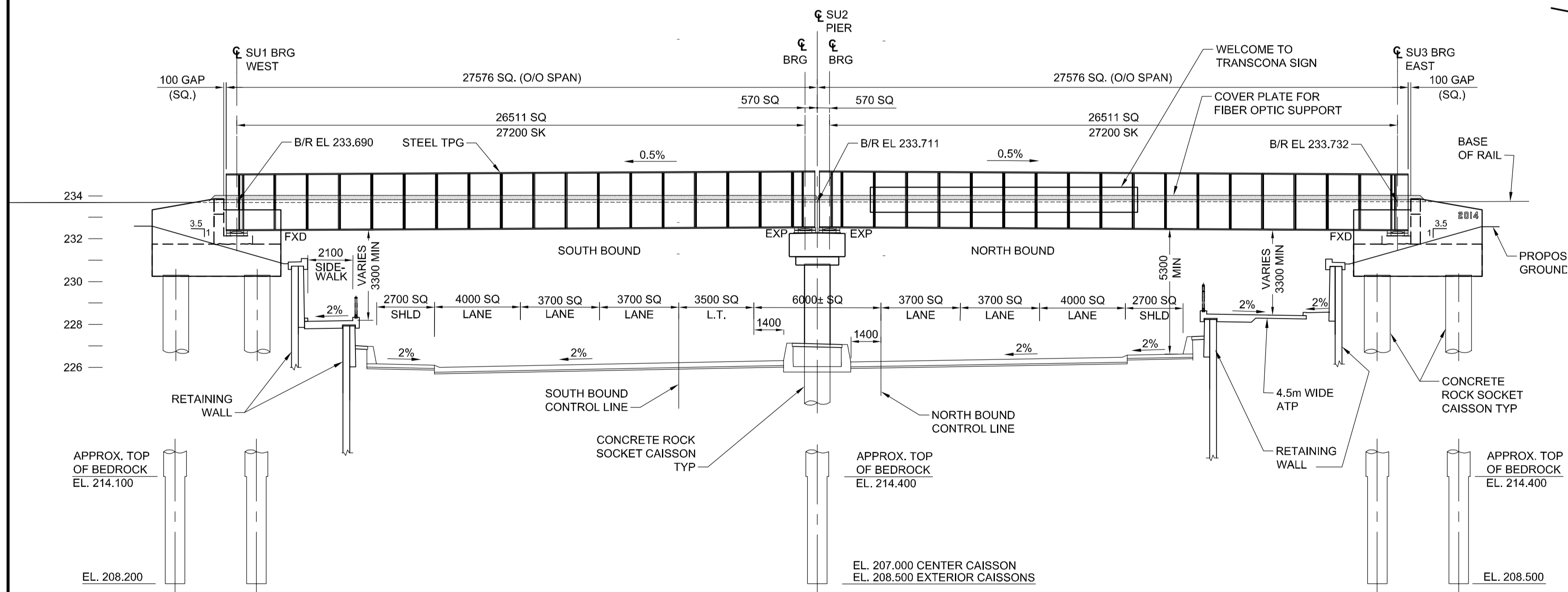


PLAN
Scale 1:150

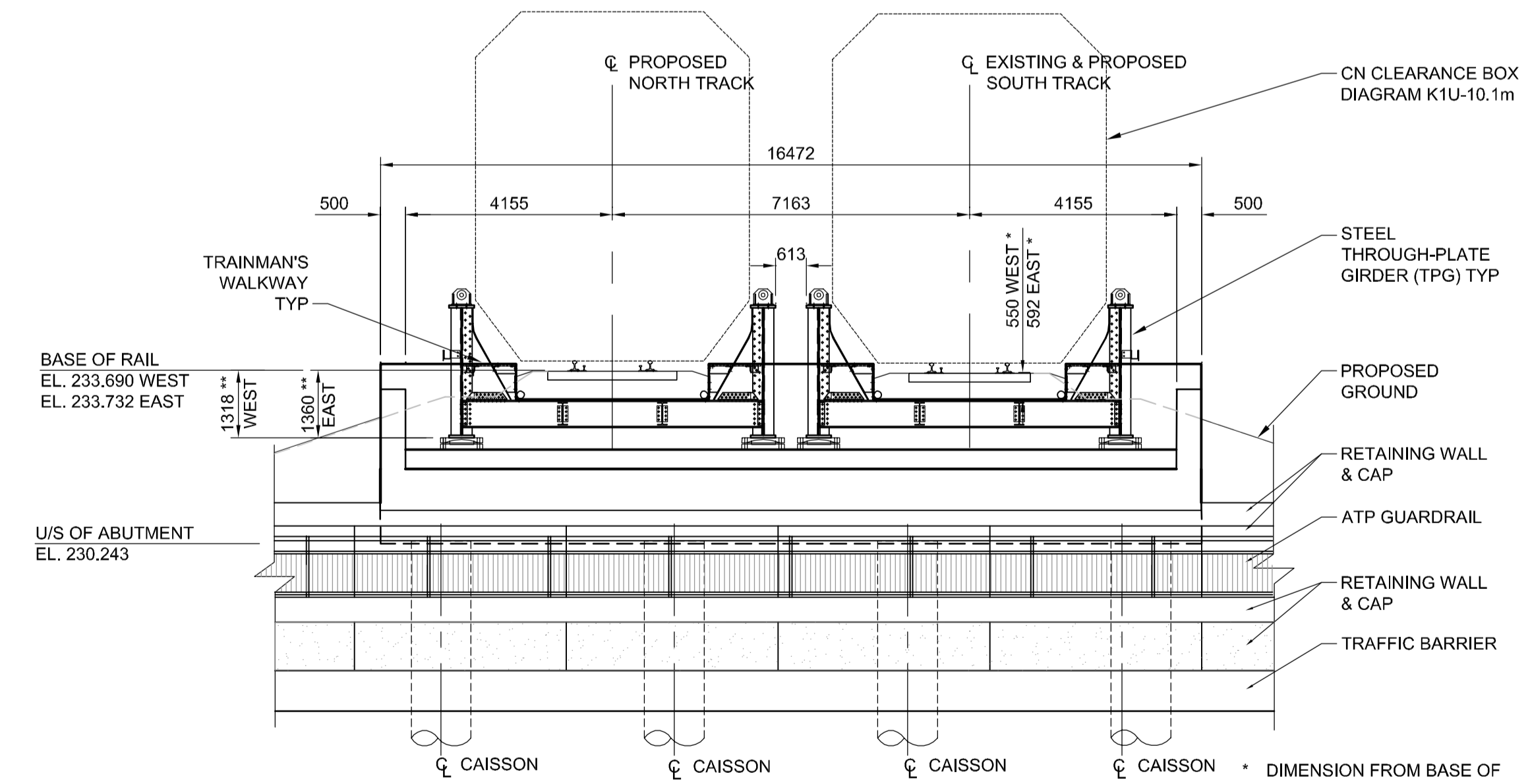


B SECTION
Scale 1:100

* DIMENSION FROM BASE OF RAIL TO TOP OF DECK PLATE



A SECTION
Scale 1:150



C SECTION
Scale 1:100

* DIMENSION FROM BASE OF RAIL TO TOP OF DECK PLATE
** DIMENSION AT CL BEARING AND CL TRACK

BID OPPORTUNITY NO. 712-2013

WORKING POINT (WP) TABLE		
	NORTHING	EASTING
WP1	5527985.902	641804.221
WP2	5527986.625	641831.996
WP3	5527987.348	641859.771



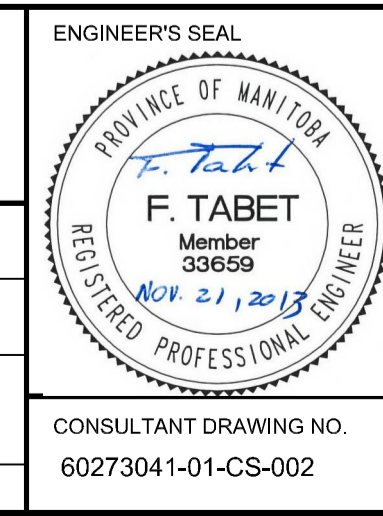
LOCATION APPROVED UNDERGROUND STRUCTURES

SUPV. U/G STRUCTURES COMMITTEE DATE

NOTE:
LOCATION OF UNDERGROUND STRUCTURES AS SHOWN ARE BASED ON THE BEST INFORMATION AVAILABLE, BUT NO GUARANTEE IS GIVEN THAT ALL EXISTING UTILITIES ARE SHOWN OR THAT THE GIVEN LOCATIONS ARE EXACT. CONFIRMATION OF EXISTENCE AND EXACT LOCATION OF ALL SERVICES MUST BE OBTAINED FROM THE INDIVIDUAL UTILITIES BEFORE PROCEEDING WITH CONSTRUCTION.

B.M. ELEV.	NO.	REVISIONS	DATE	BY
	0	ISSUED FOR TENDER	2013/11/21	KC

AECOM		ENGINEER'S SEAL	
DESIGNED BY	FT	CHECKED BY	EBL
DRAWN BY	DJH	APPROVED BY	EBL
HOR. SCALE:	AS NOTED	RELEASED FOR CONSTRUCTION BY:	
VERTICAL:	AS NOTED		
NO.	ISSUED FOR TENDER	DATE	2013-06-04



THE CITY OF WINNIPEG PUBLIC WORKS DEPARTMENT

PLESSIS ROAD TWINNING AND GRADE SEPARATION AT CN REDDITT SUBDIVISION CONTRACT 3

CITY DRAWING NUMBER U238-2014-2002
SHEET 02 OF 37

GENERAL ARRANGEMENT

CS-0002

A1 - 841694
2013-11-21
J:\COMMON\DEFAULT.CIB
P:\60273041\000-CADD\02-SHEETS\CS\60273041-01-CS-002.DWG