

WORKING POINT COORDINATES			WORKING POINT COORDINATES		
C.S.R.S. (NAD83) U.T.M. GRID			C.S.R.S. (NAD83) U.T.M. GRID		
WP	NORTHING	EASTING	WP	NORTHING	EASTING
WP31	5527938.066	641842.931	WP38	5528027.758	641857.325
WP32	5527948.032	641844.095	WP39	5528047.884	641860.079
WP33	5527954.209	641844.819	WP40	5528052.034	641860.593
WP34	5527967.914	641846.684	WP41	5528068.063	641862.409
WP35	5527984.909	641850.011	WP42	5528077.373	641863.339
WP36	5527987.703	641850.549	WP43	5528088.461	641864.329
WP37	5528007.695	641854.148			



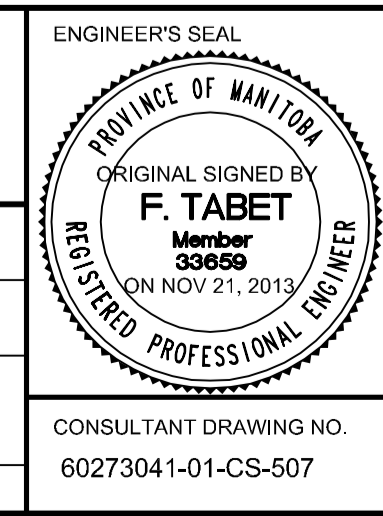
LOCATION APPROVED UNDERGROUND STRUCTURES

SUPV. U/G STRUCTURES COMMITTEE DATE

NOTE:
LOCATION OF UNDERGROUND STRUCTURES AS SHOWN ARE BASED ON THE BEST INFORMATION AVAILABLE, BUT NO GUARANTEE IS GIVEN THAT ALL EXISTING UTILITIES ARE SHOWN OR THAT THE GIVEN LOCATIONS ARE EXACT. CONFIRMATION OF EXISTENCE AND EXACT LOCATION OF ALL SERVICES MUST BE OBTAINED FROM THE INDIVIDUAL UTILITIES BEFORE PROCEEDING WITH CONSTRUCTION.

B.M. ELEV.	NO.	REVISIONS	DATE	BY
	1	ISSUED FOR ADDENDUM	2014/01/06	DJH
	0	ISSUED FOR TENDER	2013/11/21	KC

AECOM		ENGINEER'S SEAL	
DESIGNED BY	FT	CHECKED BY	ZS
DRAWN BY	KC	APPROVED BY	EBL
HOR. SCALE:	AS NOTED	RELEASED FOR CONSTRUCTION BY:	
VERTICAL:	AS NOTED		
DATE	2013-06-04	DATE	



THE CITY OF WINNIPEG PUBLIC WORKS DEPARTMENT

PLESSIS ROAD TWINNING AND GRADE SEPARATION AT CN REDDITT SUBDIVISION CONTRACT 3

CITY DRAWING NUMBER: U238-2014-2029
SHEET 29 OF 37

CONSULTANT DRAWING NO. 60273041-01-CS-507

LOWER EAST RETAINING WALL

CS-0029