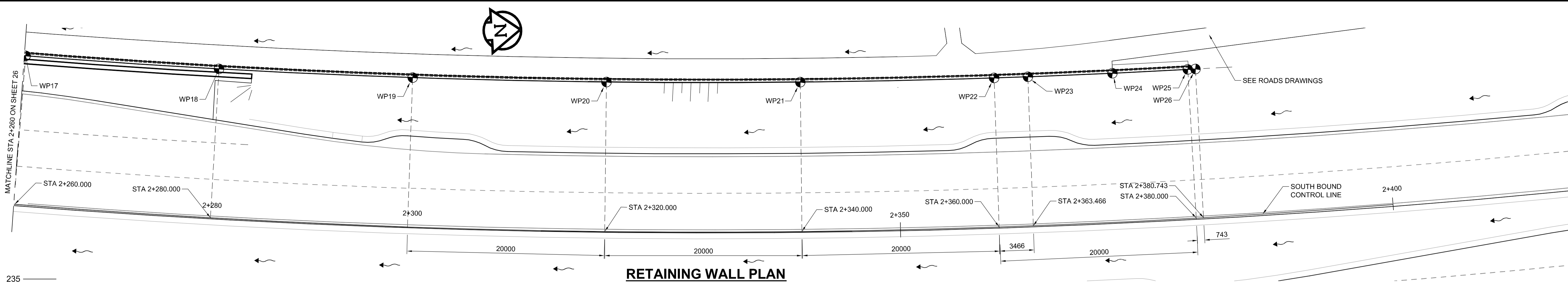
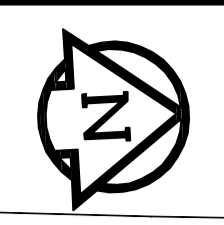
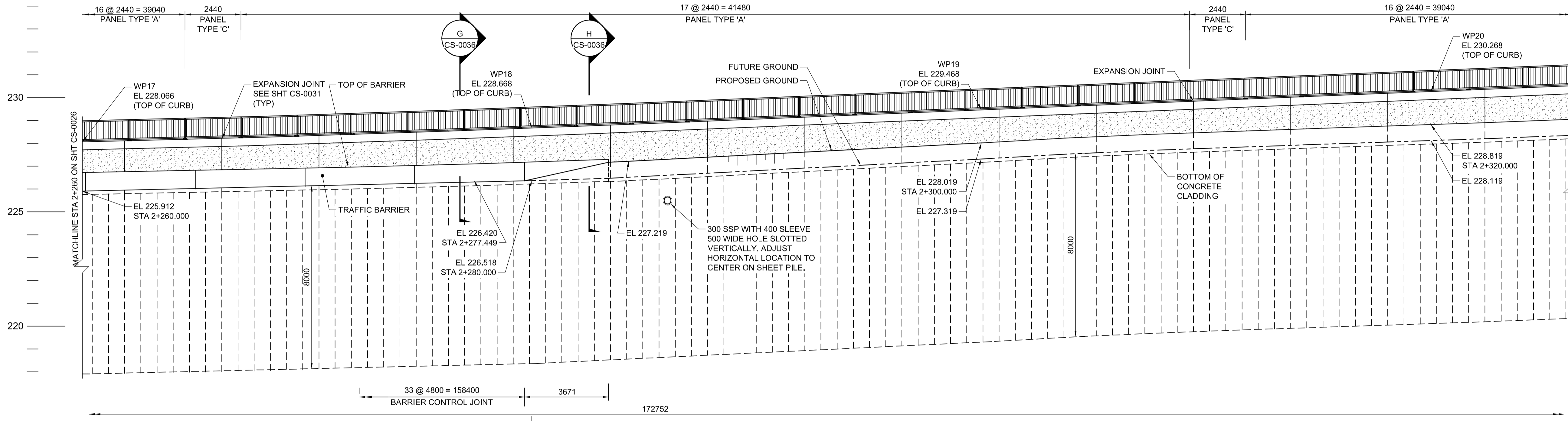


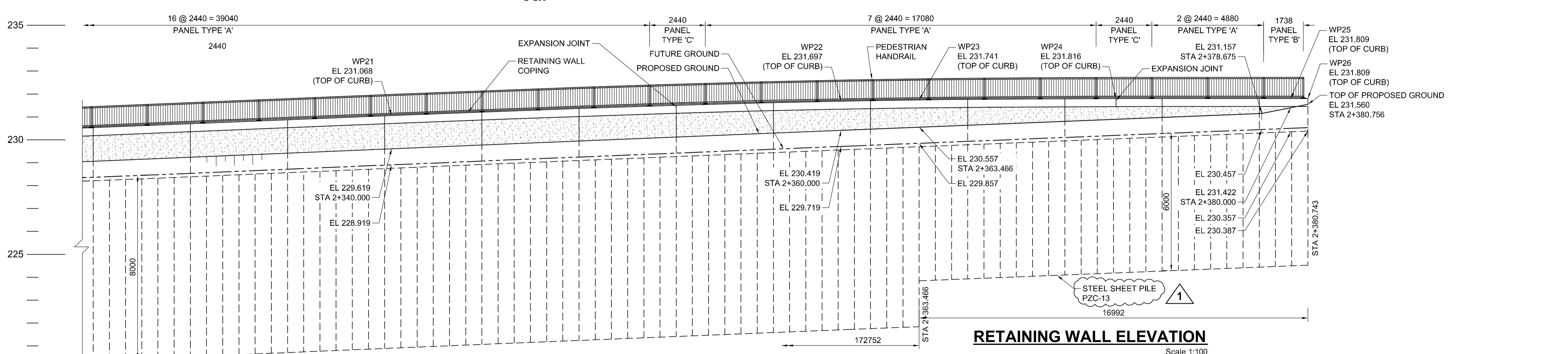
AL - 8416594
2014-01-09
AECOMMOB_DEFAULT.CTP
P:\60273041\000-CADD\02-SHEETS\CS\60273041-01-CS-505.DWG



RETAINING WALL PLAN
Scale 1:200



WORKING POINT COORDINATES		
C.S.R.S. (NAD83) U.T.M. GRID		
WP	NORTHING	EASTING
WP18	5528073.135	641824.301
WP19	5528092.686	641826.299
WP20	5528112.278	641827.862
WP21	5528131.900	641828.990
WP22	5528151.542	641829.681
WP23	5528154.968	641829.757
WP24	5528163.545	641829.889
WP25	5528171.196	641829.937
WP26	5528171.973	641829.938



RETAINING WALL ELEVATION
Scale 1:100

APEGM
Certificate of Authorization
AECOM Canada Ltd.
ORIGINAL SIGNED ON
No. 4671 Date: 2013/11/21
BID OPPORTUNITY NO. 712-2013

LOCATION APPROVED UNDERGROUND STRUCTURES	
SUPV. U/G STRUCTURES COMMITTEE	DATE
NOTE: LOCATION OF UNDERGROUND STRUCTURES AS SHOWN ARE BASED ON THE BEST INFORMATION AVAILABLE, BUT NO GUARANTEE IS GIVEN THAT ALL EXISTING UTILITIES ARE SHOWN OR THAT THE GIVEN LOCATIONS ARE EXACT. CONFIRMATION OF EXISTENCE AND EXACT LOCATION OF ALL SERVICES MUST BE OBTAINED FROM THE INDIVIDUAL UTILITIES BEFORE PROCEEDING WITH CONSTRUCTION.	

B.M. ELEV.	NO.	REVISIONS	DATE	BY
	1	ISSUED FOR ADDENDUM	2014/01/06	DJH
	0	ISSUED FOR TENDER	2013/11/21	KC

AECOM

DESIGNED BY	FT	CHECKED BY	ZS
DRAWN BY	KC	APPROVED BY	EBL
HOR. SCALE:	AS NOTED	RELEASED FOR CONSTRUCTION BY:	
VERTICAL:	AS NOTED	DATE	2013-06-04

ENGINEER'S SEAL
PROVINCE OF MANITOBA
ORIGINAL SIGNED BY
F. TABET
ON NOV 21, 2013
REGISTERED PROFESSIONAL ENGINEER
CONSULTANT DRAWING NO.
60273041-01-CS-505

THE CITY OF WINNIPEG
PUBLIC WORKS DEPARTMENT

PLESSIS ROAD TWINNING AND GRADE SEPARATION AT CN REDDITT SUBDIVISION CONTRACT 3

CITY DRAWING NUMBER
U238-2014-2027
SHEET 27 OF 37

LOWER WEST RETAINING WALL - SHEET 2
CS-0027