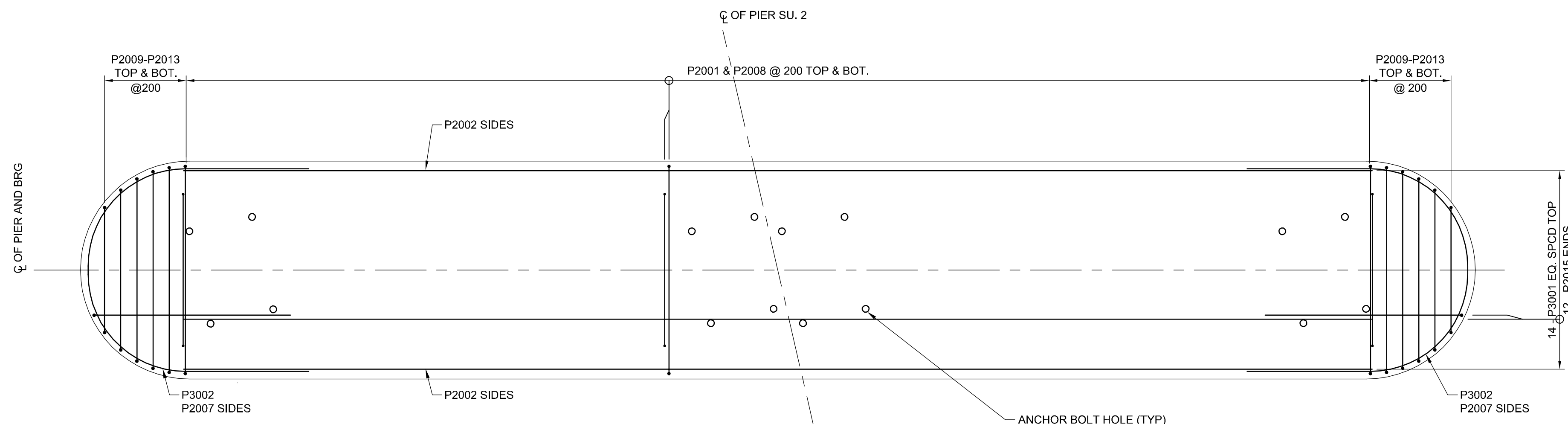
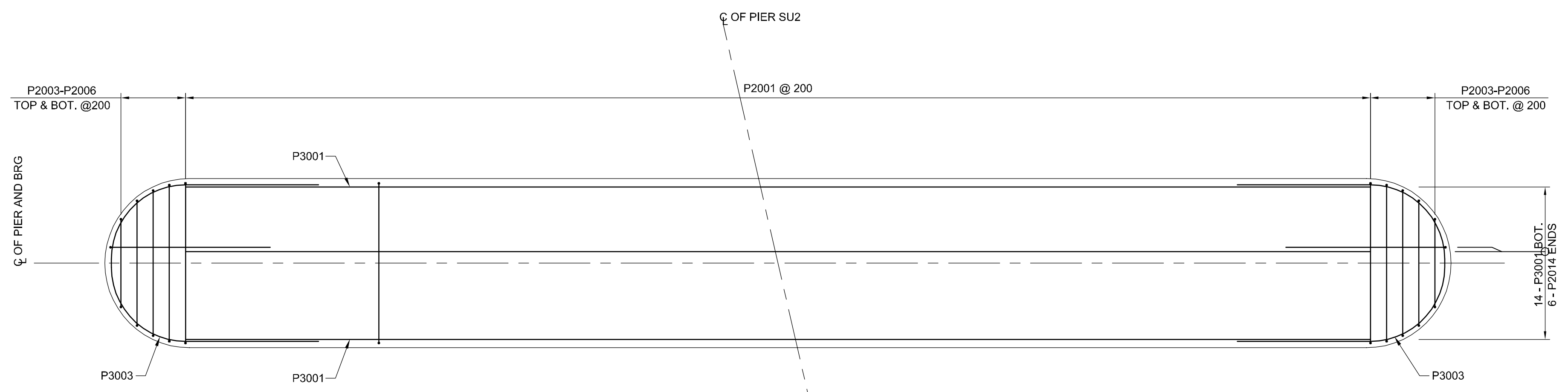


AL - 841694
603-11-21
AECOMMO_DEFAULT.CTP

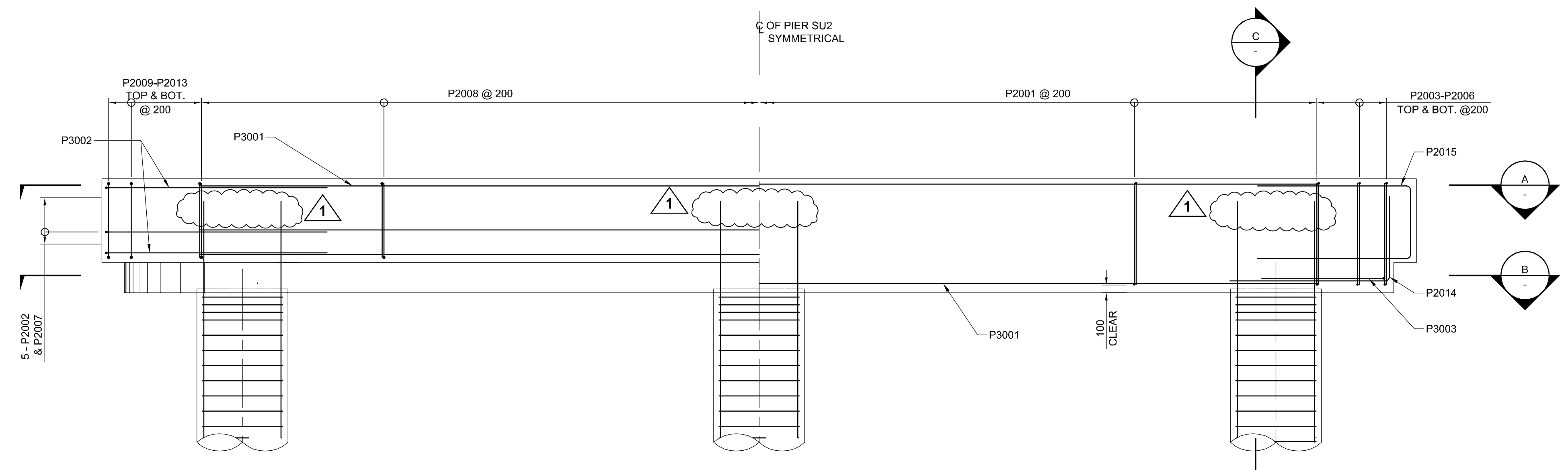


A SECTION
Scale 1:40

ANCHOR BOLT HOLE (TYP)
SEE DETAIL ON SHEET
CS-0012 USE BEARING
TEMPLATE TO ADJUST
REINFORCING



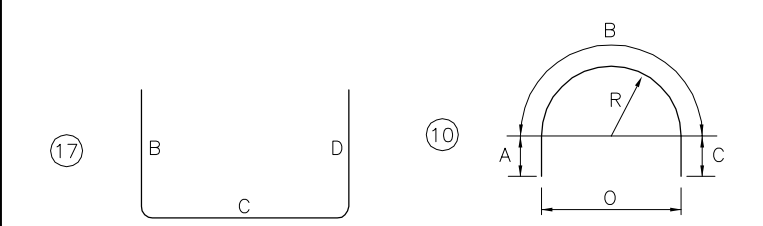
B SECTION
Scale 1:40



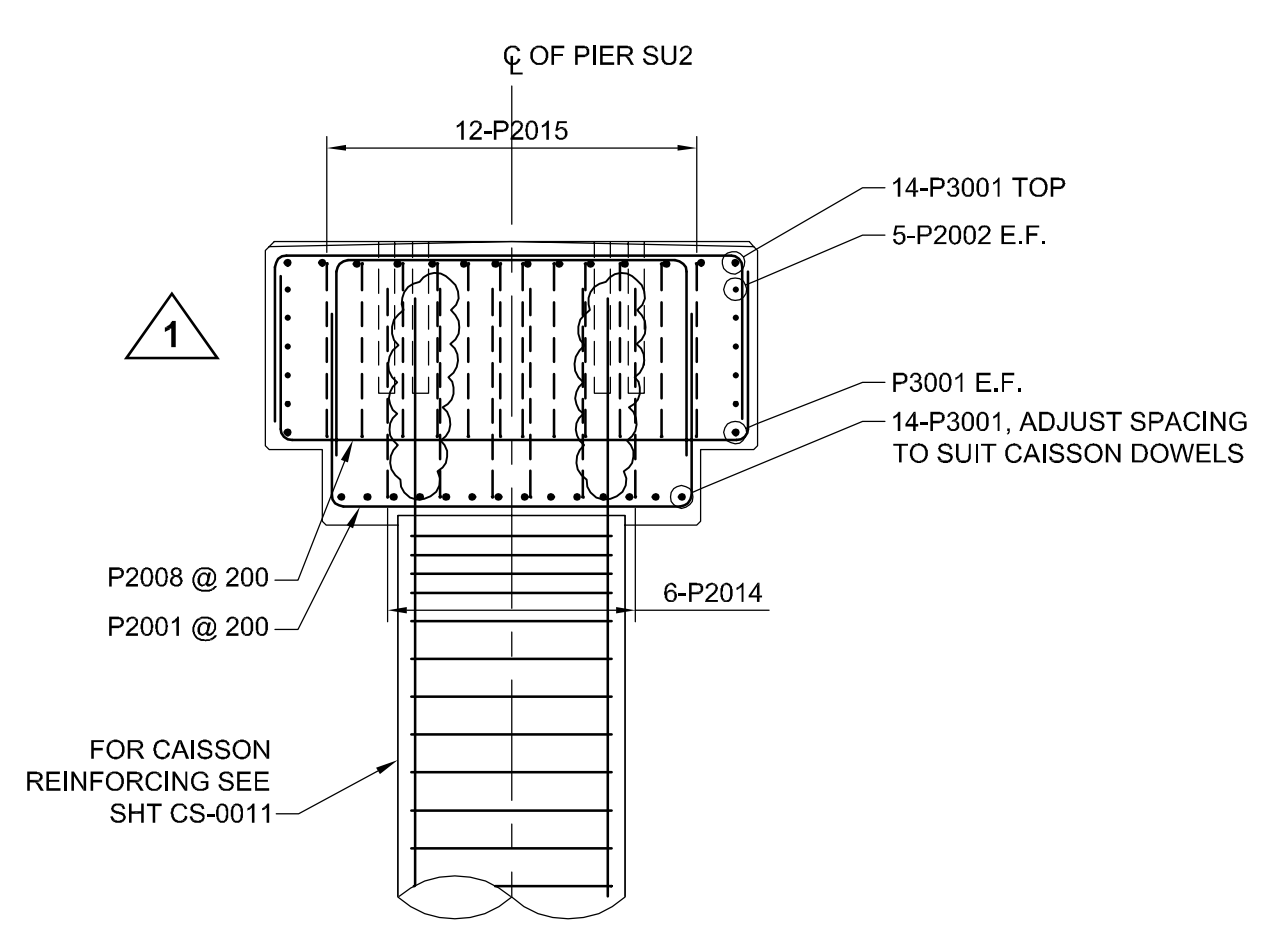
PIER ELEVATION
Scale 1:40

MARKS	NO BARS	SIZE	LENGTH	TYPE	A	B	C	D	O	R*	SHAPE	MASS (kg)
PIER CAP												
P3001	30	30	14600	STR							U	2406.8
P3002	4	30	8284	10	2150	3984	2150		2535	1268	U	182.1
P3003	2	30	6175	10	1600	2975	1600		1930	950	U	67.9
P2001	148	20	4200	17	1100	2000	1100				U	1463.9
P2002	10	20	14600	STR							U	343.8
P2003	4	20	4135	17	1100	1935	1100				U	39.0
P2004	4	20	3985	17	1100	1785	1100				U	37.5
P2005	4	20	3720	17	1100	1520	1100				U	35.0
P2006	4	20	3250	17	1100	1050	1100				U	30.6
P2007	10	20	6184	10	1100	3984	1100		2535	1268	U	145.6
P2008	148	20	4400	17	900	2600	900				U	1533.6
P2009	4	20	4350	17	900	2550	900				U	41.0
P2010	4	20	4240	17	900	2440	900				U	39.9
P2011	4	20	4050	17	900	2250	900				U	38.2
P2012	4	20	3765	17	900	1965	900				U	35.5
P2013	4	20	3330	17	900	1530	900				U	31.4
P2014	12	20	2915	17		1800	1115				U	82.4
P2015	24	20	5760	17	2400	960	2400				U	325.6
					DWG TOTAL WEIGHT = 6879.8 kg GALVANIZED							

NOTE: ALL PIER REINFORCING TO BE GALVANIZED.



* OUTSIDE RADIUS



C SECTION
Scale 1:40

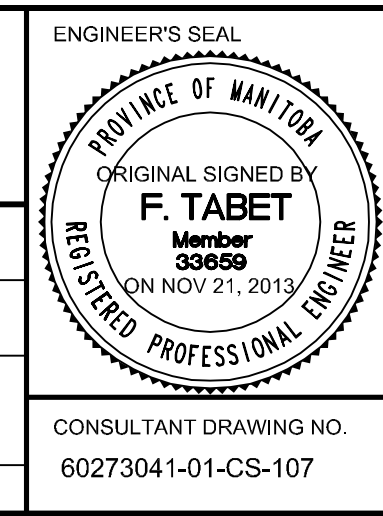
BID OPPORTUNITY NO. 712-2013



LOCATION APPROVED UNDERGROUND STRUCTURES			
SUPV. U/G STRUCTURES COMMITTEE	DATE		
NOTE: LOCATION OF UNDERGROUND STRUCTURES AS SHOWN ARE BASED ON THE BEST INFORMATION AVAILABLE, BUT NO GUARANTEE IS GIVEN THAT THE GIVEN LOCATIONS ARE EXACT. CONFIRMATION OF EXISTENCE AND EXACT LOCATION OF ALL SERVICES MUST BE OBTAINED FROM THE INDIVIDUAL UTILITIES BEFORE PROCEEDING WITH CONSTRUCTION.			
NO.	REVISIONS	DATE	BY
1	ISSUED FOR ADDENDUM	2013/17/10	DJH
0	ISSUED FOR TENDER	2013/11/21	KC

B.M. ELEV.	
NO.	DATE

AECOM			
DESIGNED BY	FT	CHECKED BY	CD
DRAWN BY	KC	APPROVED BY	EBL
HOR. SCALE:	AS NOTED	RELEASED FOR CONSTRUCTION BY:	
VERTICAL:	AS NOTED		
DATE	2013-06-04	DATE	



THE CITY OF WINNIPEG PUBLIC WORKS DEPARTMENT	
PLESSIS ROAD TWINNING AND GRADE SEPARATION AT CN REDDITT SUBDIVISION CONTRACT 3	
SU2 PIER REINFORCING	CS-0015
CITY DRAWING NUMBER U238-2014-2015	SHEET 15 OF 37