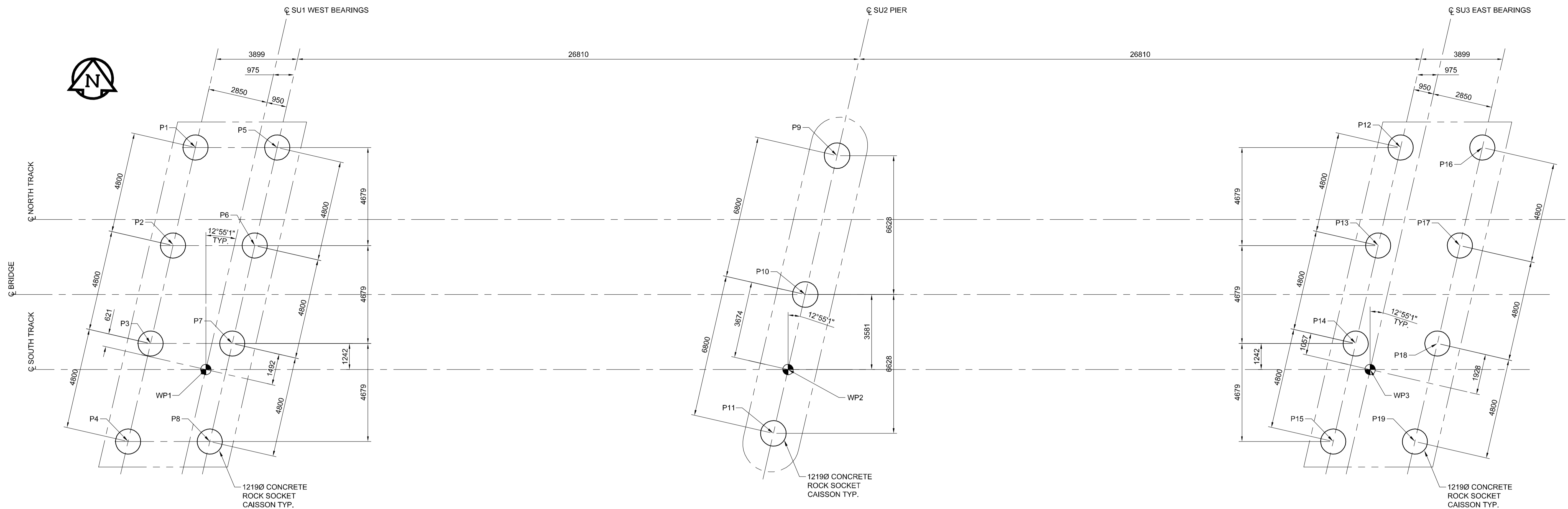
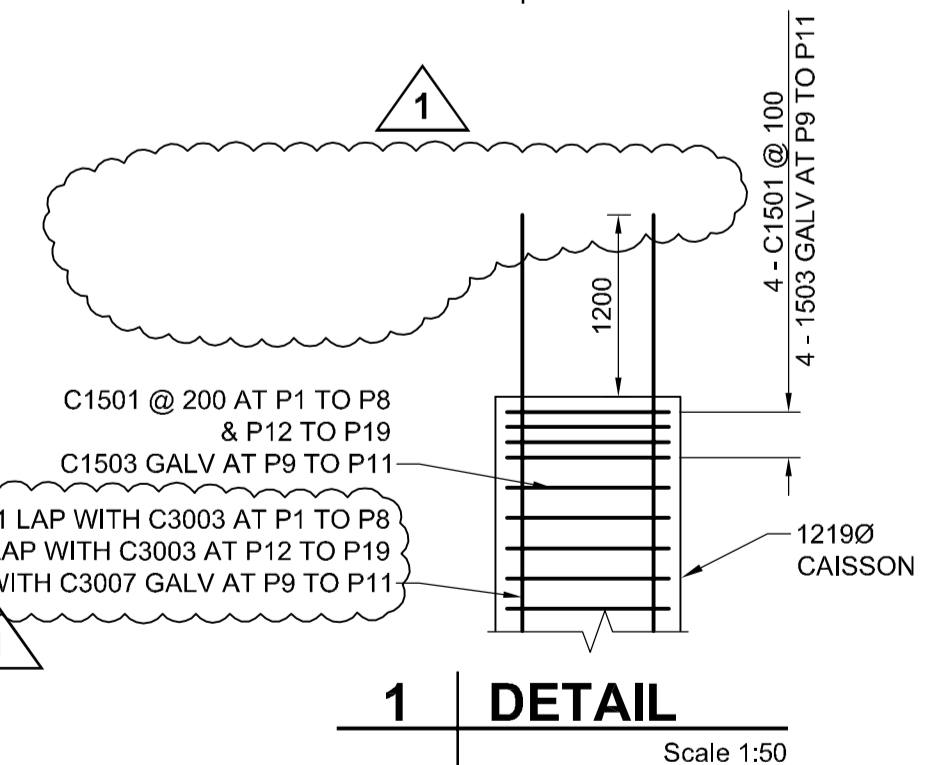
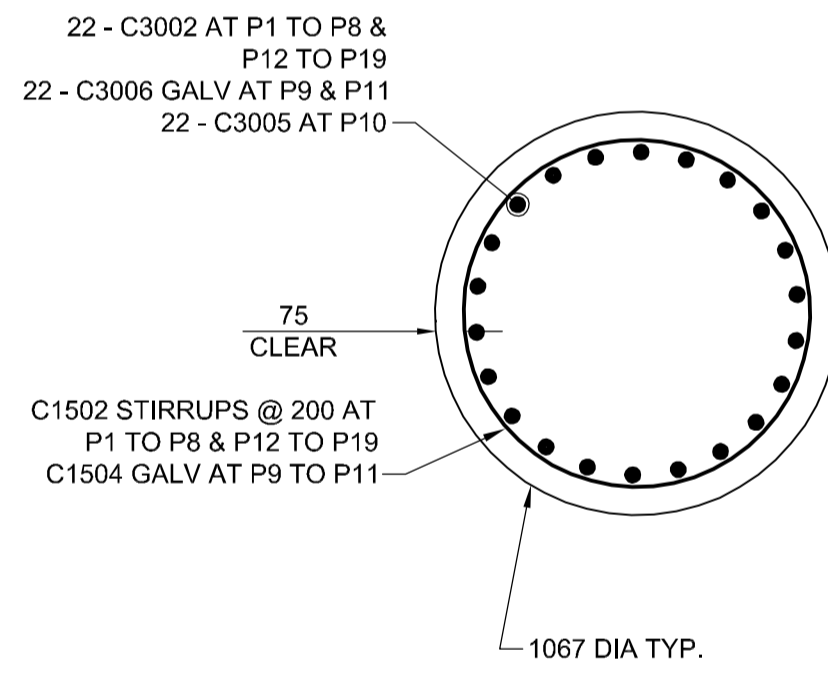
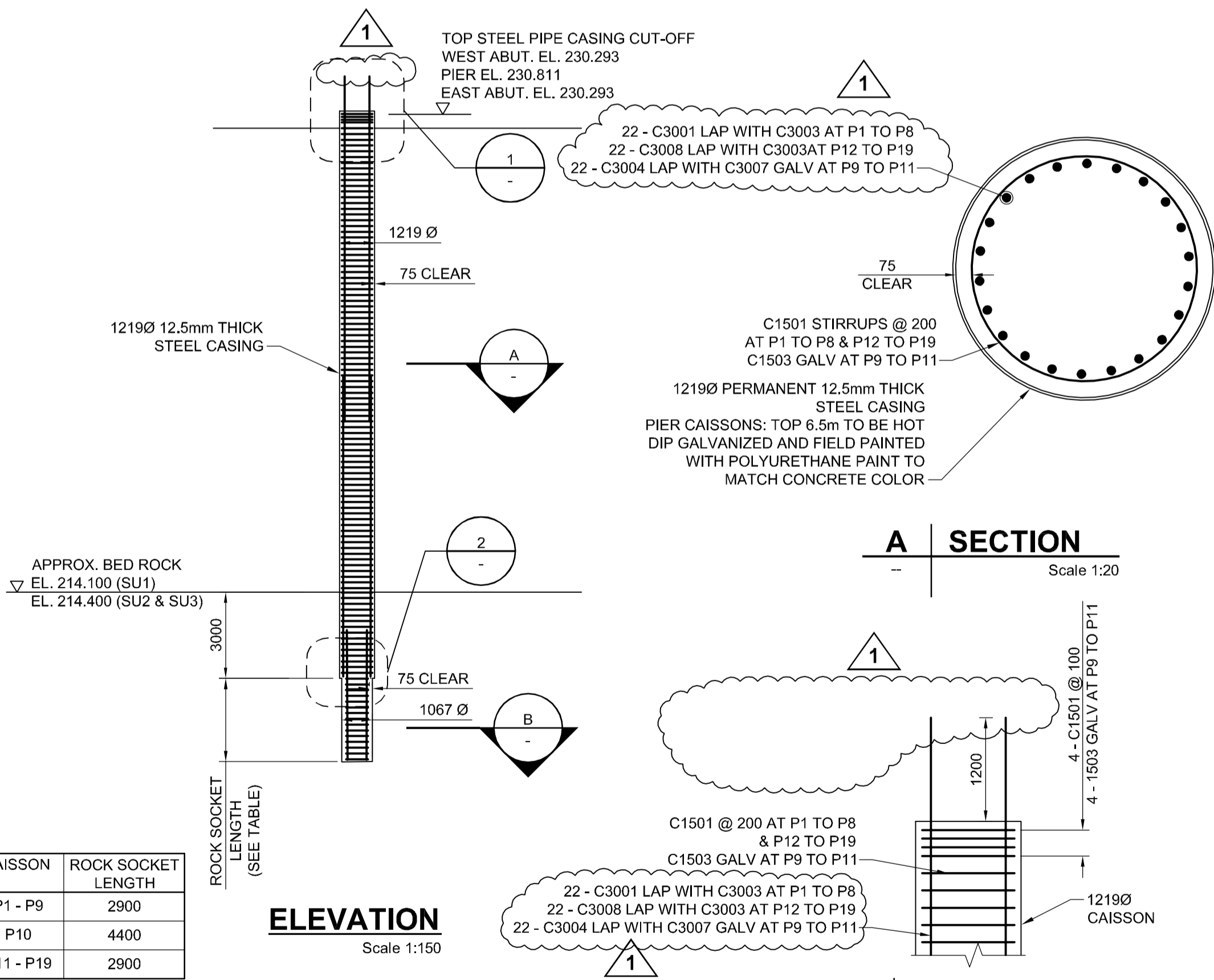


AL - 8414594
6032-12-17
AECOMOND_DEFAULT.CTB
P:\60273041\000-CADD\02-SHEETS\CS\60273041-01-CS-101.DWG



FOUNDATION LAYOUT

Scale 1:100

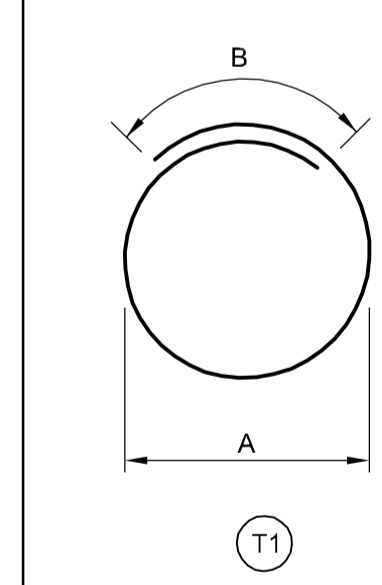


CAISSON NOTES:

- FOR GENERAL NOTES SEE SHEET CS-0001
- FOR FOUNDATION NOTES SEE SHEET CS-0001
- CONTRACTOR TO FIELD CONFIRM ALL DIMENSIONS RELATED TO THE STRUCTURE
- RESOLVE WITH CONTRACT ADMINISTRATOR ALL DISCREPANCIES PRIOR TO START OF CONSTRUCTION
- ALL CAISSONS SHALL BE FOUNDED INTO THE BEDROCK AS PER SOCKET LENGTH TABLE.
- MAXIMUM DESIGN COMPRESSION SERVICE LOAD (WORKING LOAD) FOR CAISSONS P1 TO P8 AND P12 TO P19:
 PRIMARY LOADS: 3750 kN
 PRIMARY AND SECONDARY LOADS: 4220 kN
 MAXIMUM DESIGN COMPRESSION SERVICE LOADS (WORKING LOAD) FOR CAISSON P10:
 PRIMARY LOADS: 8400 kN
 MAXIMUM DESIGN COMPRESSION SERVICE LOAD (WORKING LOAD) FOR CAISSONS P9 & P11:
 PRIMARY LOADS: 4910 kN
- CAISSON CONCRETE MINIMUM SPECIFIED COMPRESSIVE STRENGTH SHALL BE 35 MPa AT 28 DAYS WITH TYPE HS OR HSB SULPHATE RESISTANT PORTLAND CEMENT
- PERMANENT CASING WILL BE REQUIRED TO PREVENT EXCESSIVE SEEPAGE AND SLOUGHING INTO THE CAISSON HOLES DURING EXCAVATION AND CASTING OF THE CONCRETE
- THE CAISSON INSTALLATION SHALL MONITORED BY QUALIFIED GEOTECHNICAL PERSONNEL
- ALL CAISSON EXCAVATIONS SHALL BE THOROUGHLY CLEANED AND VISUALLY INSPECTED BY THE GEOTECHNICAL ENGINEER PRIOR TO CASTING THE CONCRETE. NO SLOUGH OR DISTURBED MATERIAL SHALL BE ALLOWED TO REMAIN AT THE CAISSON BASE
- CAISSON CONCRETE SHOULD BE CAST IMMEDIATELY AFTER DRILLING OF THE HOLE TO REDUCE THE RISK OF GROUND WATER SEEPAGE AND SLOUGHING SOIL.
- SPLICES TO LONGITUDINAL REINFORCING TO BE ALTERNATING.
- WHERE GALVANIZING IS DAMAGED, REPAIR WITH TWO COATS OF A COMPONENT ZINC-RICH COATING CONTAINING 96% NON-TOXIC ELECTROLYTIC ZINC POWDER (PURE TO 99.995%) AND NON-TOXIC SOLVENT.

BAR LIST: CAISSONS

MARK	NO	SIZE	COATING	LENGTH	TYPE	A	B	MASS (kg)
C1501	1568	15	NONE	4280	T1	1044	1000	10737
C1502	256	15	NONE	3881	T1	917	1000	1590
C1503	300	15	GALV	4280	T1	1044	1000	2054
C1504	55	15	GALV	3881	T1	917	1000	342
C3001	176	30	NONE	9950	STR			9632
C3002	352	30	NONE	4500	STR			8712
C3003	352	30	NONE	12000	STR			23232
C3004	66	30	GALV	10160	STR			3688
C3005	22	30	GALV	6000	STR			726
C3006	44	30	GALV	4500	STR			1089
C3007	66	30	GALV	12000	STR			4356
C3008	176	30	NONE	9650	STR			9341



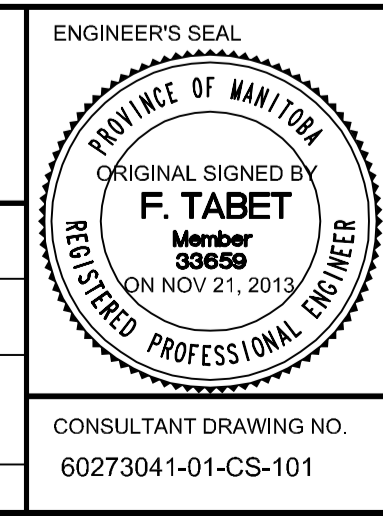
ESTIMATED QUANTITIES (CAISSONS):

- GALVANIZED REINFORCING STEEL ----- 12255 kg
- PLAIN REINFORCING STEEL ----- 63244 kg



LOCATION APPROVED UNDERGROUND STRUCTURES		B.M. ELEV.	
SUPV. U/G STRUCTURES COMMITTEE	DATE		
NOTE: LOCATION OF UNDERGROUND STRUCTURES AS SHOWN ARE BASED ON THE BEST INFORMATION AVAILABLE, BUT NO GUARANTEE IS GIVEN THAT ALL EXISTING UTILITIES ARE SHOWN OR THAT THE GIVEN LOCATIONS ARE EXACT. CONFIRMATION OF EXISTENCE AND EXACT LOCATION OF ALL SERVICES MUST BE OBTAINED FROM THE INDIVIDUAL UTILITIES BEFORE PROCEEDING WITH CONSTRUCTION.			
NO.	REVISIONS	DATE	BY
1	ISSUED FOR ADDENDUM	2013/11/10	DJH
0	ISSUED FOR TENDER	2013/11/21	KC

DESIGNED BY		CHECKED BY	
FT/DKD		CD	
DRAWN BY		APPROVED BY	
KC		EBL	
HOR. SCALE:		RELEASED FOR CONSTRUCTION BY:	
AS NOTED			
VERTICAL:		DATE	
AS NOTED		2013-06-04	



THE CITY OF WINNIPEG PUBLIC WORKS DEPARTMENT

PLESSIS ROAD TWINNING AND GRADE SEPARATION AT CN REDDITT SUBDIVISION CONTRACT 3

CITY DRAWING NUMBER U238-2014-2011
SHEET 11 OF 37

CONSULTANT DRAWING NO. 60273041-01-CS-101

CAISSON LAYOUT

CS-0011

BID OPPORTUNITY NO. 712-2013