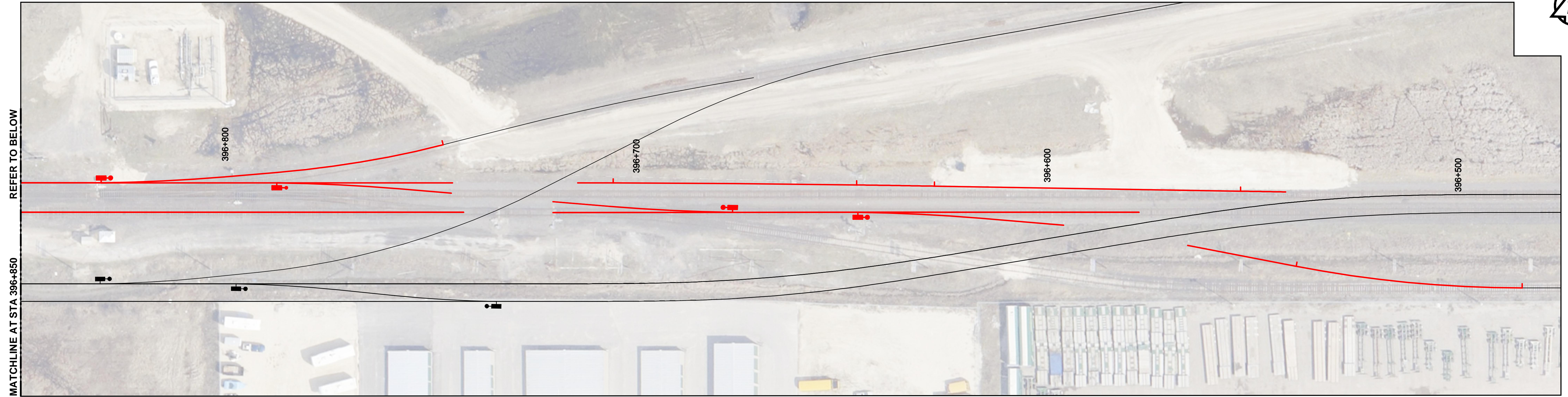
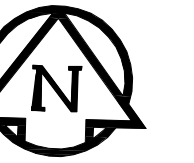
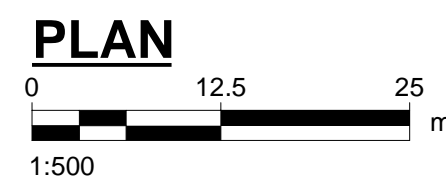
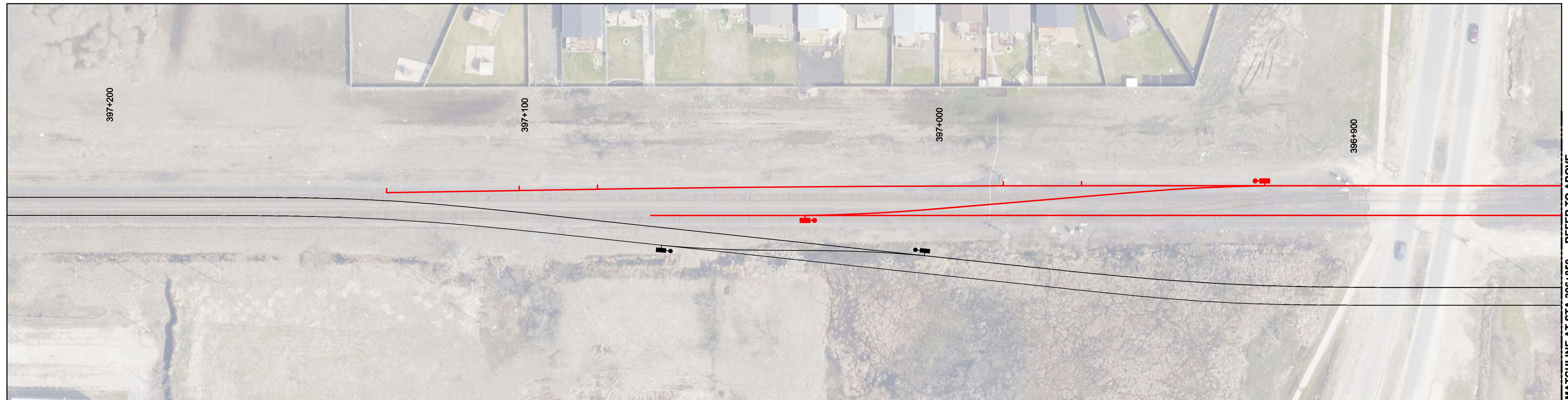


EAST SIDE OF STAGE B



WEST SIDE OF STAGE B



GENERAL NOTES:

1. ALL DIMENSIONS ARE METRIC UNLESS NOTED OTHERWISE.
2. ALL PROPERTY LINES ARE PROVIDED FOR INFORMATION PURPOSES ONLY.
3. ALL NEW TURNOUTS COMPLETE WITH TEMPORARY SWITCH STAND.
4. ALL TRACK PANELS COMPLETE AND 39' LONG.
5. ALL LENGTHS SHOWN ARE APPROXIMATE, CONFIRM PRIOR TO CONDUCTING WORK.

APEGM
 Certificate of Authorization
 AECOM Canada Ltd.
 No. 4671 Date: 2013/12/10
 BID OPPORTUNITY NO. 712-2013

LEGEND

- REMOVED TRACK: - - - - -
- RELINED TRACK: - - - - -
- PROPOSED TRACK: ————
- CONSTRUCTED TRACK: ————
- PROPOSED PS: ●
- EXISTING PS: ●
- NEW PS: ●
- REMOVE PS: ●
- PROPOSED ACCESS ROAD: - - - - -
- EDGE ACCESS ROAD PLANKS: - - - - -

LOCATION APPROVED UNDERGROUND STRUCTURES

SUPV. U/G STRUCTURES COMMITTEE DATE

NOTE:
 LOCATION OF UNDERGROUND STRUCTURES AS SHOWN ARE BASED ON THE BEST INFORMATION AVAILABLE. BUT NO GUARANTEE IS GIVEN THAT ALL EXISTING UTILITIES ARE SHOWN OR THAT THE GIVEN LOCATIONS ARE EXACT. CONFIRMATION OF EXISTENCE AND EXACT LOCATION OF ALL SERVICES MUST BE OBTAINED FROM THE INDIVIDUAL UTILITIES BEFORE PROCEEDING WITH CONSTRUCTION.

B.M. ELEV.	NO.	REVISIONS	DATE	BY
	0	Issued For Addendum	13/12/10	RCP



DESIGNED BY	BRP	CHECKED BY	BJM
DRAWN BY	WD	APPROVED BY	RCP
HOR. SCALE:	1:500	RELEASED FOR CONSTRUCTION BY:	
VERTICAL:	1:50	DATE	2013/12/10

ENGINEER'S SEAL
 PROVINCE OF MANITOBA
 R. G. WINKLER
 Member 6708
 REGISTERED PROFESSIONAL ENGINEER
 CONSULTANT DRAWING NO.
 30-SHT-CR-7102

THE CITY OF WINNIPEG
 PUBLIC WORKS DEPARTMENT

PLESSIS ROAD TWINNING AND GRADE SEPARATION AT CN REDDITT SUBDIVISION CONTRACT 3

SHOOFLY REMOVAL AND FINAL CONFIGURATION STAGING PLAN STAGE B

CITY DRAWING NUMBER U238-2014-2272
 SHEET 11 OF 14
CR-7102