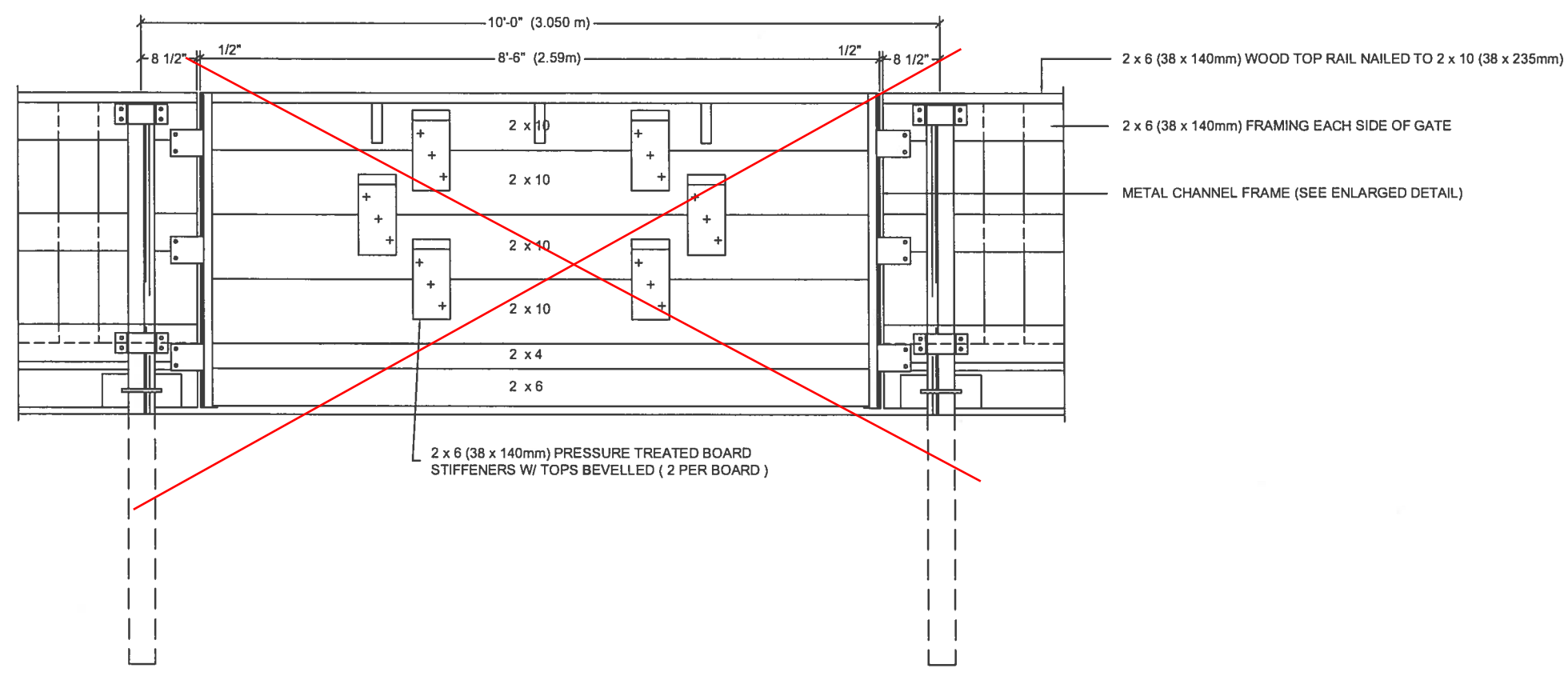
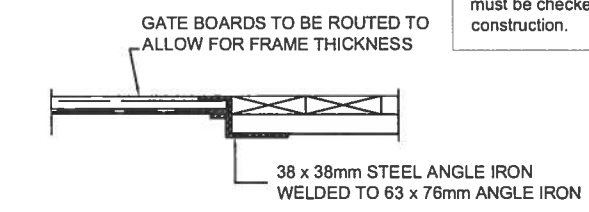


Determine location of underground utilities before proceeding with construction. Location of underground structures as shown are based on best information available, but no guarantee is given that all existing utilities are shown and exact locations of all underground including connections must be checked with the utility concerned before proceeding with construction.



- 2 x 6 (38 x 140mm) WOOD TOP RAIL NAILED TO 2 x 10 (38 x 235mm)
- 2 x 6 (38 x 140mm) FRAMING EACH SIDE OF GATE
- METAL CHANNEL FRAME (SEE ENLARGED DETAIL)

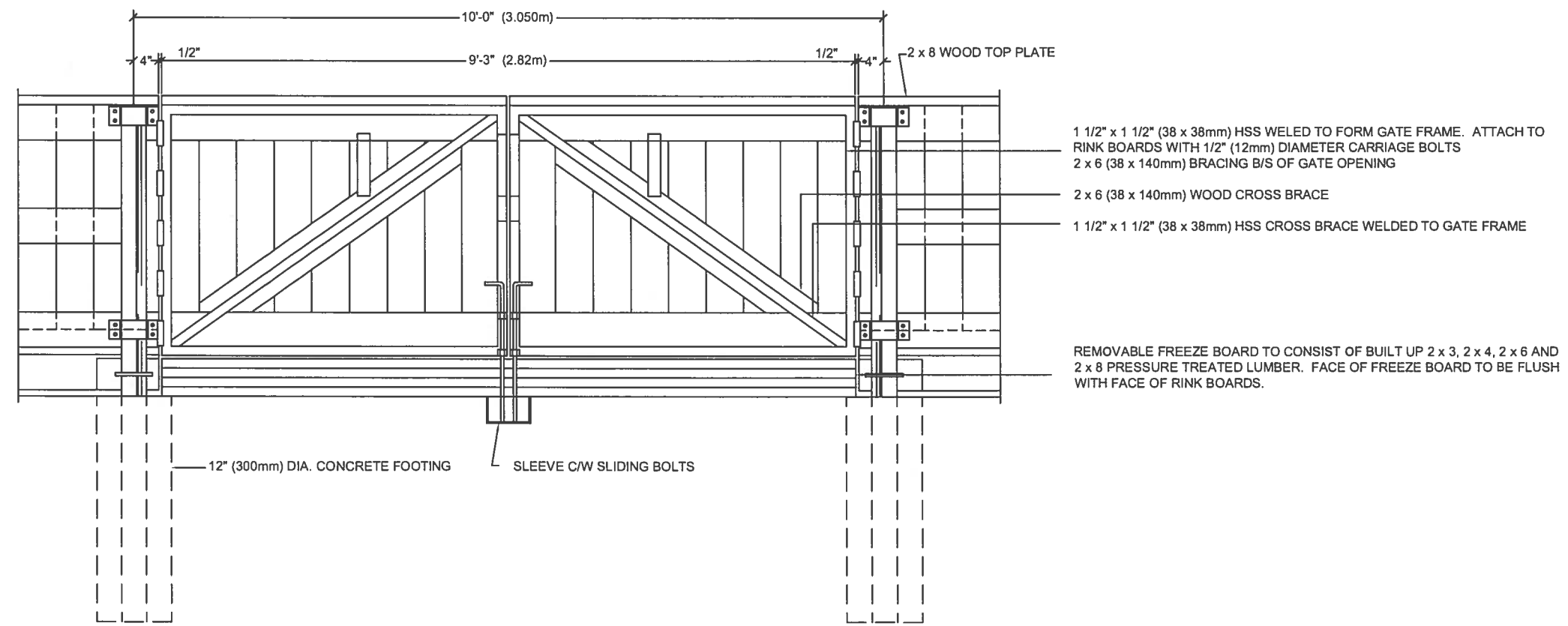
2 x 6 (38 x 140mm) PRESSURE TREATED BOARD STIFFENERS W/ TOPS BEVELLED (2 PER BOARD)



- 4" x 5" BOLT PLATE - WELD TO ANGLE IRON (3 PER SIDE)
- DRILL 2 - 11mm DIAMETER HOLES PER PLATE FOR 10mm CARRIAGE BOLTS
- 1" (25mm) PLATE WELDED TO BOTTOM OF STEEL CHANNEL

VEHICLE GATE - OPTION 'A' (LIFT UP TYPE)
SCALE: 1/2" = 1'-0"

CHANNEL FRAME - VEHICLE GATE (OPTION 'A')
SCALE: N.T.S.




- 1 1/2" x 1 1/2" (38 x 38mm) HSS WELED TO FORM GATE FRAME. ATTACH TO RINK BOARDS WITH 1/2" (12mm) DIAMETER CARRIAGE BOLTS
- 2 x 6 (38 x 140mm) BRACING B/S OF GATE OPENING
- 2 x 6 (38 x 140mm) WOOD CROSS BRACE
- 1 1/2" x 1 1/2" (38 x 38mm) HSS CROSS BRACE WELDED TO GATE FRAME

REMOVABLE FREEZE BOARD TO CONSIST OF BUILT UP 2 x 3, 2 x 4, 2 x 6 AND 2 x 8 PRESSURE TREATED LUMBER. FACE OF FREEZE BOARD TO BE FLUSH WITH FACE OF RINK BOARDS.

12" (300mm) DIA. CONCRETE FOOTING SLEEVE C/W SLIDING BOLTS

VEHICLE GATE - OPTION 'B' (SWINGING GATE)
SCALE: 1/2" = 1'-0"

NO.	DESCRIPTION	DATE	BY
REVISIONS / ISSUE			
THE CITY OF WINNIPEG  PUBLIC WORKS DEPARTMENT BUILDING SERVICES DIVISION 100 MAIN STREET, MAIN FLOOR WPG, MB. R3C 1A4			
PROJECT:			
STANDARD CONSTRUCTION DETAILS FOR OUTDOOR HOCKEY RINKS			
SHEET TITLE			
VEHICLE GATE ELEVATIONS & DETAILS			
ENG. STAMP	PROJECT NO.	DRAWN BY:	CHECKED BY:
		LMC	
APPROVED BY:			
SCALE:			DATE:
AS NOTED			JULY 12, 2002
DWG. NO.			REV.
CS-4			