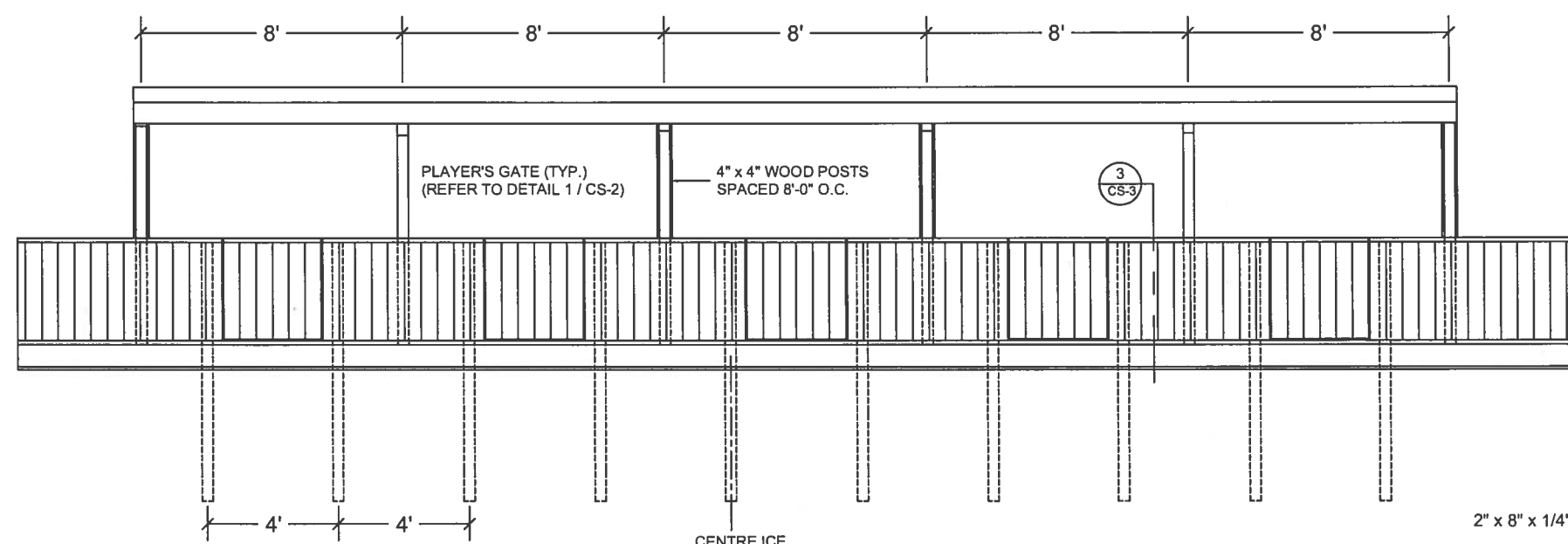
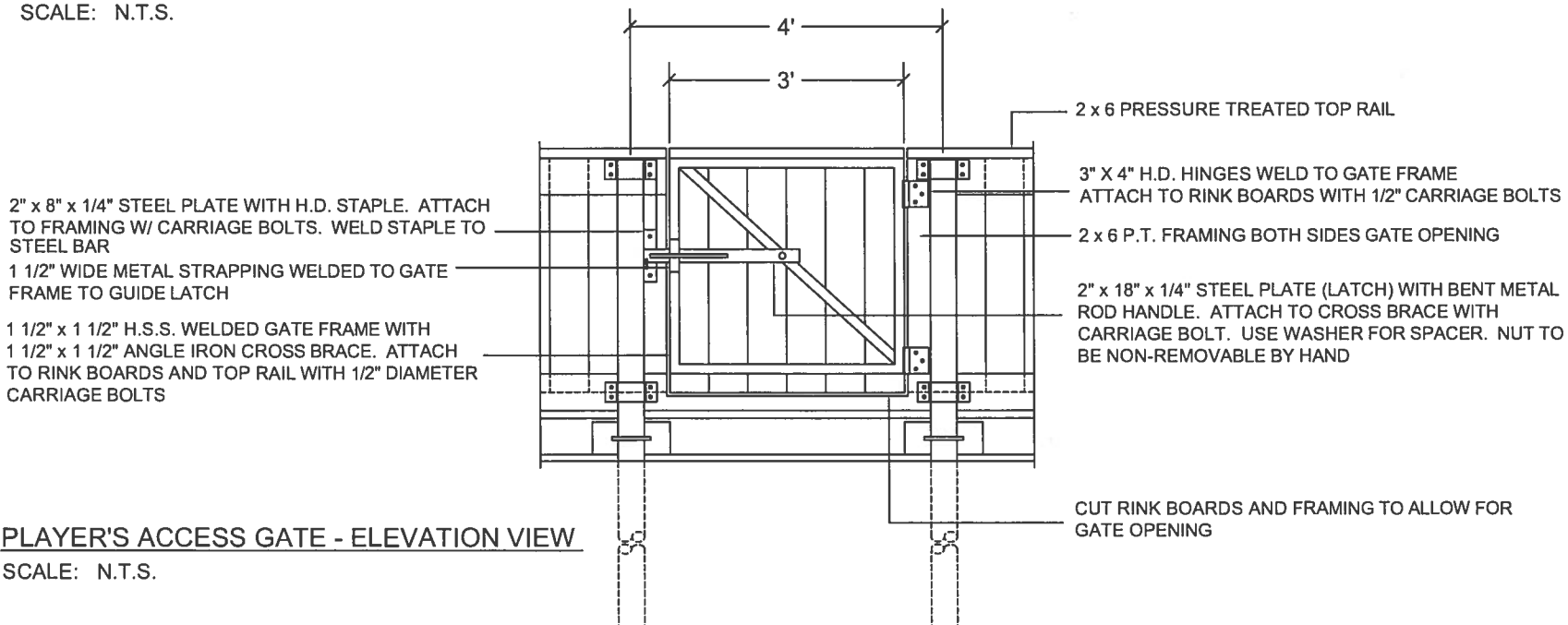


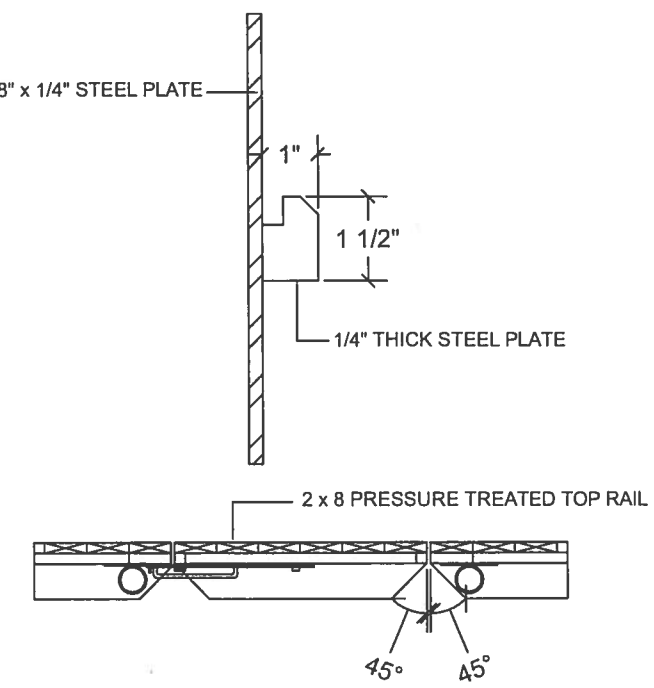
PLAYER'S/PENALTY BOXES - PLAN VIEW
SCALE: N.T.S.



PLAYER'S/PENALTY BOXES - ELEVATION VIEW
SCALE: N.T.S.



1 CS-2 **PLAYER'S ACCESS GATE - ELEVATION VIEW**
SCALE: N.T.S.



PLAYER'S ACCESS GATE - PLAN VIEW
SCALE: N.T.S.

Determine location of underground utilities before proceeding with construction. Location of underground structures as shown are based on best information available, but no guarantee is given that all existing utilities are shown and exact locations of all underground including connections must be checked with the utility concerned before proceeding with construction.

GENERAL

- Drawing should be used as a general guide. Exact size, along with style and location of vehicle gates, access, player's gates, and player's boxes location, grading and lighting requirements to be shown on project site plan.

HOCKEY PEN AND PLAYER'S BOXES


- All post uprights to be minimum 89mm diameter Schedule 40 steel pipes.
- Upright posts to be located as shown on the Drawings. Posts to be pushed into ground and shall be plumb in all directions.
- Vehicle Gates (Option 'B') requires post uprights encased in concrete (gate only).
- All lumber and plywood to be pressure treated (P.T.).
- Lumber with loose knots, surface imperfections or splits will not be accepted.
- All fasteners to be galvanized. Nails to be 89mm Ardox and clinched.
- All carriage bolts, barrel bolts, nuts and washers to be cadmium plated.
- Carriage bolts to be used to fasten wood framing to sleeves and gate hardware.
- All bolt locations to be pre-drilled.
- Nuts on gate hardware to be non-removable.
- Top rail of rink end boards to be 2" x 4" (38 x 89mm) ripped from 2" x 8" (38 x 184mm) pressure treated lumber.
- All hardware to be hot-dipped galvanized after fabrication.
- Player's boxes to be constructed separately from rink.
- Notch top plate of rink boards to fit Player's Box uprights.
- Floor of Player's Boxes to be notched around steel posts. Floor to be flush with back of rink boards.

CHAINLINK SCREENING

- Chainlink screening shall be located at both ends of rinks as shown.
- All chainlink screening to be 9 gauge steel wire woven into 2" (50mm) mesh. Top and bottom selvage shall be knuckled.
- Top rails for screening shall be 1 1/2" (38mm) diameter. Rails to be hammered flat and welded to uprights.
- All welds to be smooth and continuous.
- Posts and rails to be cleaned of all welding residue. Apply Galvalume according to Manufacturer's specifications.
- Mesh to be attached to uprights with wire ties at 1' on center.
- Metal strapping to be interwoven in mesh and secured to top rail with screws at 8" o.c. Strapping to be continuous post to post.
- Chainlink screening to be flush with front of upright.
- Chainlink construction shall be in accordance with City of Winnipeg Standard Construction Specifications CW 3550.

PAINTING

- Inside of rink boards and entire player's boxes shall be painted with two (2) coats of white paint c/w game lines (red & blue).

NO.	DESCRIPTION	DATE	BY
REVISIONS / ISSUE			
THE CITY OF WINNIPEG			
			
PUBLIC WORKS DEPARTMENT BUILDING SERVICES DIVISION 100 MAIN STREET, MAIN FLOOR WPG, MB. R3C 1A4			
PROJECT:			
STANDARD CONSTRUCTION DETAILS FOR OUTDOOR HOCKEY RINKS			
SHEET TITLE			
PLAYER'S BOX PLAN, ELEVATION & DETAILS			
ENG. STAMP	PROJECT NO.	DRAWN BY:	CHECKED BY:
		LMC	
APPROVED BY:			
SCALE:		DATE:	
AS NOTED		JULY 12, 2002	
DWG. NO.			REV.
CS-2			