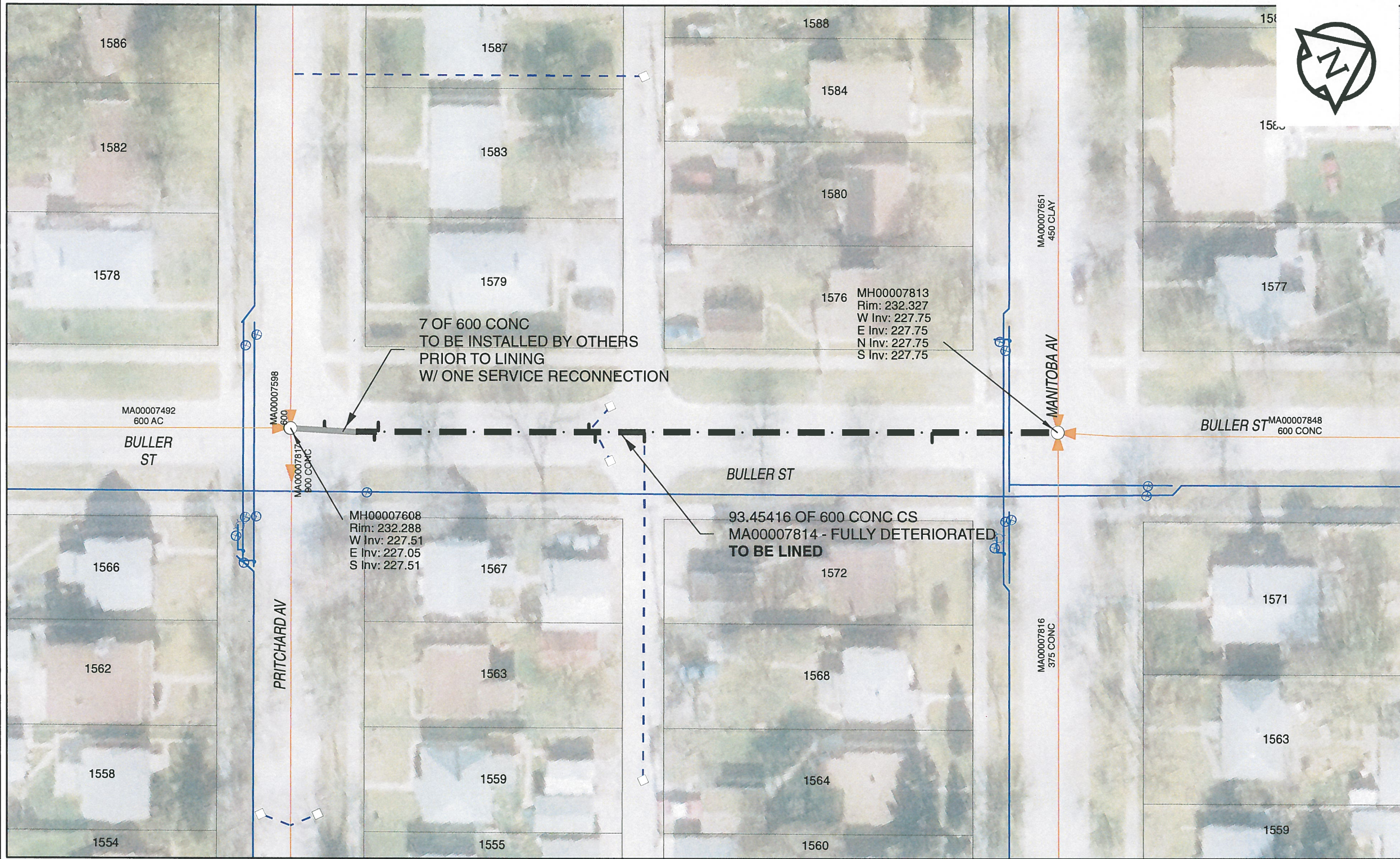


B SIZE 11" X 17" (279mm x 432mm)



Sewer Junction Information

(From Video Inspection)

Reference MH	Distance	Size	Clock
S-MH00007813	014.9	150	11
-	048.8	150	10
-	054.6	150	11
-	055.5	150	01
-	080.3	150	01
-	080.8	150	11
-	086.6	150	02

WARNING
 IF POWER EQUIPMENT OR EXPLOSIVES ARE TO BE USED FOR EXCAVATION ON THIS PROJECT, THE CONTRACTOR MUST:
 1) NOTIFY THE GAS COMPANY OF THE PROPOSED LOCATION OF EXCAVATION.
 2) TAKE PRECAUTION TO AVOID DAMAGE TO GAS COMPANY INSTALLATIONS.
 SEE PROVINCIAL REGULATION 140/92 FOR DETAILS

APEGM
 Certificate of Authorization
 AECOM Canada Ltd.
 No. 4671 Date: *Nov. 28/2013*

METRIC
 WHOLE NUMBERS INDICATE MILLIMETRES
 DECIMALIZED NUMBERS INDICATE METRES

0 2.5 5 10 15 20
 Meters

BID OPPORTUNITY NO. 679-2013

AECOM REVIEW DRFT CHK

FILE NAME: 2013.pdf Saved By: CM

LOCATION APPROVED UNDERGROUND STRUCTURES

SUPR. U/G STRUCTURES COMMITTEE DATE: _____

NOTE:
 LOCATION OF UNDERGROUND STRUCTURES AS SHOWN ARE BASED ON THE BEST INFORMATION AVAILABLE. BUT NO GUARANTEE IS GIVEN THAT ALL EXISTING UTILITIES ARE SHOWN OR THAT THE GIVEN LOCATIONS ARE EXACT. CONFIRMATION OF EXISTENCE AND EXACT LOCATION OF ALL SERVICES MUST BE OBTAINED FROM THE INDIVIDUAL UTILITIES BEFORE PROCEEDING WITH CONSTRUCTION.

Can-Net GPS Reference Station WINN/810

NO.	REVISIONS	YY/MM/DD	BY
0	ISSUED FOR CONSTRUCTION	13/11/29	

AECOM

DESIGNED BY	PL	CHECKED BY	<i>Handwritten Signature</i>
DRAWN BY	JD	APPROVED BY	<i>Handwritten Signature</i>
HOR. SCALE	1:500	RELEASED FOR CONSTRUCTION	<i>Handwritten Signature</i>
VERT. SCALE	N/A	DATE	<i>11-27-13</i>
DATE			

PROFESSIONAL'S SEAL

PROVINCE OF MANITOBA
K.W. FITCHETT
 REGISTERED ENGINEER

CONSULTANT DRAWING NO.
 60250984-01-C-2013-R0X.mxd

THE CITY OF WINNIPEG WATER AND WASTE DEPARTMENT

2013 SEWER RENEWALS
 BY CIPP LINING
 CONTRACT 11
 BULLER ST
 1ST MH S OF MANITOBA AV ON BULLER ST TO BEND AT PRITCHARD AV

SHEET 40 OF 41
 CITY DRAWING NUMBER
10616 REV 0