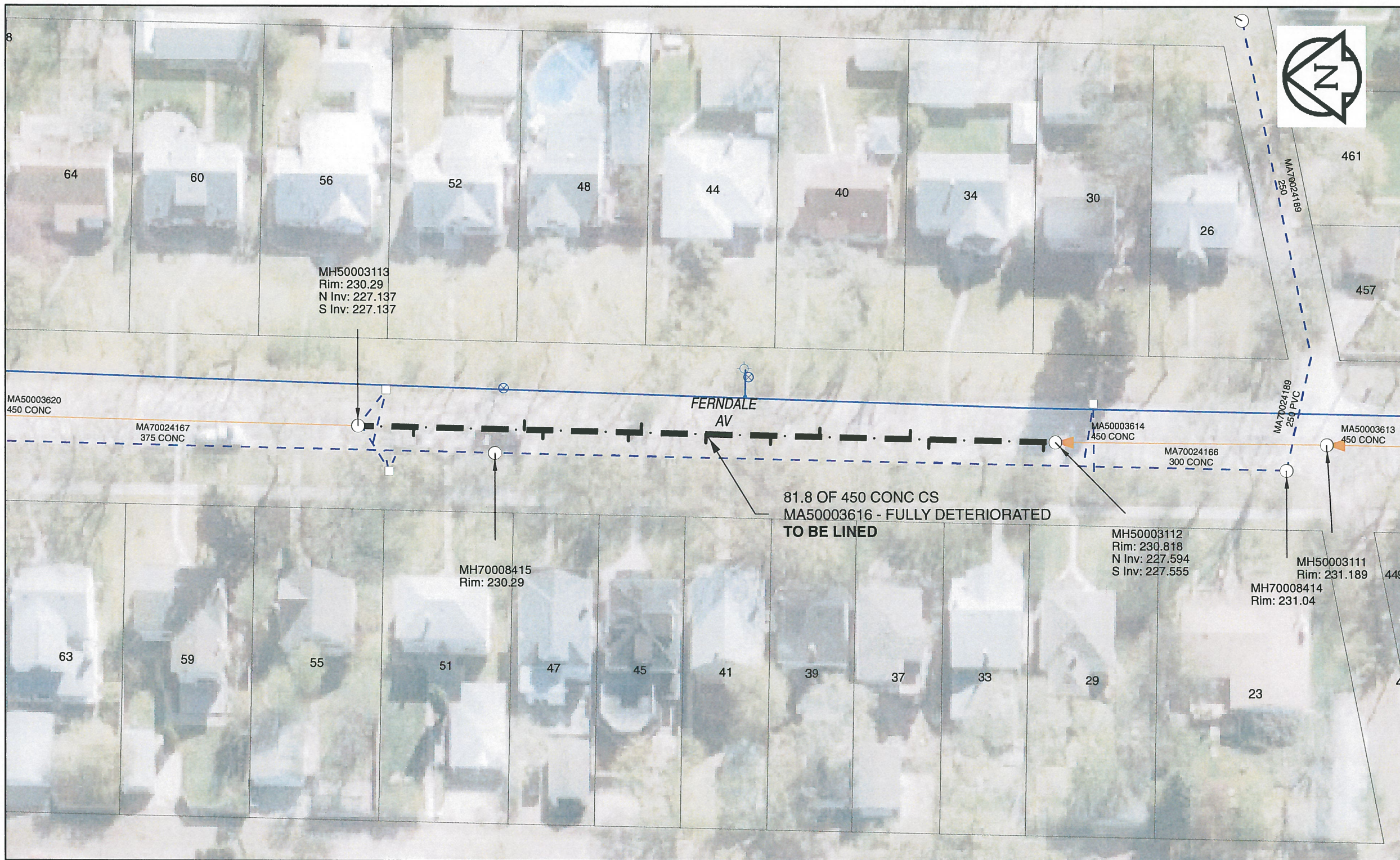


B SIZE 11" X 17" (279mm x 432mm)



Sewer Junction Information
(From Video Inspection)

Reference MH	Distance	Size	Clock
S-MH50003112	001.4	150	10
-	014.9	150	10
-	017.1	150	01
-	027.8	150	01
-	033.6	150	10
-	041.2	150	10
-	048.9	150	02
-	050.4	150	09
-	060.5	150	10
-	062.7	150	02
-	075.7	150	10

WARNING
IF POWER EQUIPMENT OR EXPLOSIVES ARE TO BE USED FOR EXCAVATION ON THIS PROJECT, THE CONTRACTOR MUST:
1) NOTIFY THE GAS COMPANY OF THE PROPOSED LOCATION OF EXCAVATION.
2) TAKE PRECAUTION TO AVOID DAMAGE TO GAS COMPANY INSTALLATIONS.
SEE PROVINCIAL REGULATION 140/92 FOR DETAILS

AECOM
Certificate of Authorization
AECOM Canada Ltd.
No. 4671 Date: *Nov. 28/2013*

METRIC
WHOLE NUMBERS INDICATE MILLIMETRES
DECIMALIZED NUMBERS INDICATE METRES
0 2.5 5 10 15 20
Meters

BID OPPORTUNITY NO. 679-2013

AECOM REVIEW DRFT CHK

LOCATION APPROVED
UNDERGROUND STRUCTURES

SUPR. U/G STRUCTURES COMMITTEE DATE

NOTE:
LOCATION OF UNDERGROUND STRUCTURES AS SHOWN ARE BASED ON THE BEST INFORMATION AVAILABLE. BUT NO GUARANTEE IS GIVEN THAT ALL EXISTING UTILITIES ARE SHOWN OR THAT THE GIVEN LOCATIONS ARE EXACT. CONFIRMATION OF EXISTENCE AND EXACT LOCATION OF ALL SERVICES MUST BE OBTAINED FROM THE INDIVIDUAL UTILITIES BEFORE PROCEEDING WITH CONSTRUCTION.

Can-Net GPS Reference Station WINN/810

NO.	REVISIONS	YY/MM/DD	BY	DATE
0	ISSUED FOR CONSTRUCTION	13/11/29		

AECOM

DESIGNED BY	PL	CHECKED BY	<i>[Signature]</i>
DRAWN BY	JD	APPROVED BY	<i>[Signature]</i>
HOR. SCALE	1:500	RELEASED FOR CONSTRUCTION	<i>[Signature]</i>
VERT. SCALE	N/A	DATE	<i>11-27-13</i>

PROFESSIONAL'S SEAL

PROVINCE OF MANITOBA
K.W.
FITCHETT
REGISTERED ENGINEER

CONSULTANT DRAWING NO.
60250984-01-C-2013-R0X.mxd

THE CITY OF WINNIPEG
WATER AND WASTE DEPARTMENT

2013 SEWER RENEWALS
BY CIPP LINING
CONTRACT 11
FERNDALE AV
2ND MH N OF LYNDAL DR ON FERNDALE AV TO 1ST MH S OF CONISTON ST

SHEET	39 OF 41
CITY DRAWING NUMBER	10570
REV	0