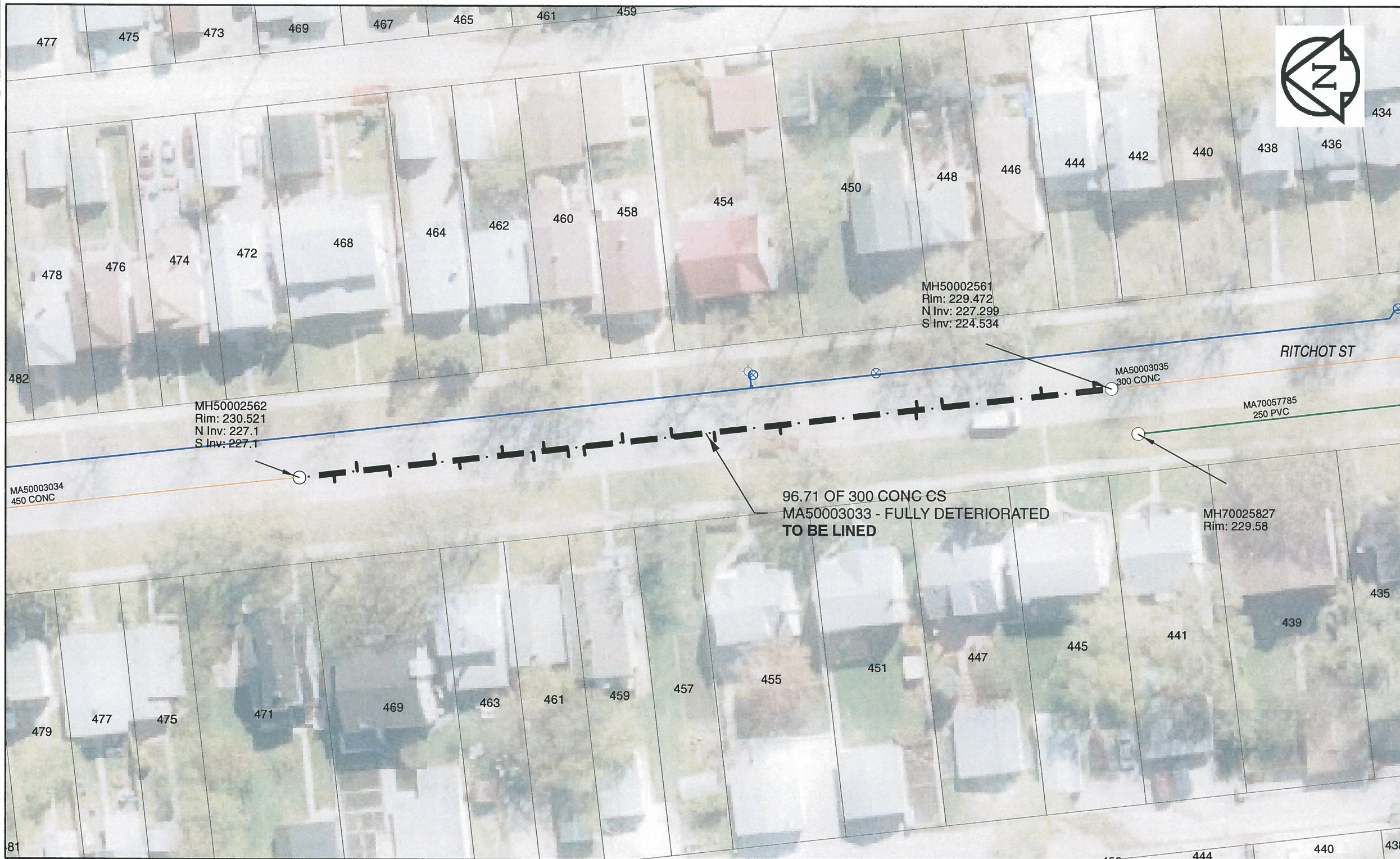


B SIZE 11" X 17" (279mm x 432mm)



Sewer Junction Information

(From Video Inspection)

Reference MH	Distance	Size	Clock
S-MH50002561	002.0	150	02
-	008.3	150	02
-	020.1	150	02
-	023.2	150	02
-	023.2	150	10
S-MH50002562	004.1	150	02
-	006.9	150	10
-	010.7	150	02
-	016.1	150	10
-	019.0	150	02
-	024.2	150	10
-	027.8	150	02
-	029.1	150	10
-	031.9	150	02
-	033.8	150	01
-	038.5	150	10
-	044.3	150	11
-	049.3	150	02
-	057.1	150	03

WARNING
 IF POWER EQUIPMENT OR EXPLOSIVES ARE TO BE USED FOR EXCAVATION ON THIS PROJECT, THE CONTRACTOR MUST:
 1) NOTIFY THE GAS COMPANY OF THE PROPOSED LOCATION OF EXCAVATION.
 2) TAKE PRECAUTION TO AVOID DAMAGE TO GAS COMPANY INSTALLATIONS.
 SEE PROVINCIAL REGULATION 140/92 FOR DETAILS

AECOM
 Certificate of Authorization
 AECOM Canada Ltd.
 No. 4671 Date: *Nov. 28/2013*

METRIC
 WHOLE NUMBERS INDICATE MILLIMETRES
 DECIMALIZED NUMBERS INDICATE METRES
 0 2.5 5 10 15 20 Meters
 BID OPPORTUNITY NO. 679-2013

AECOM REVIEW DRFT CHK

FILE NAME: 2013.pdf Saved By: CM

LOCATION APPROVED UNDERGROUND STRUCTURES

SUPR. U/G STRUCTURES	DATE

NOTE:
 LOCATION OF UNDERGROUND STRUCTURES AS SHOWN ARE BASED ON THE BEST INFORMATION AVAILABLE. BUT NO GUARANTEE IS GIVEN THAT ALL EXISTING UTILITIES ARE SHOWN OR THAT THE GIVEN LOCATIONS ARE EXACT. CONFIRMATION OF ALL SERVICES MUST BE OBTAINED FROM THE INDIVIDUAL UTILITIES BEFORE PROCEEDING WITH CONSTRUCTION.

Can-Net GPS Reference Station WINN/810

NO.	REVISIONS	YY/MM/DD	BY
0	ISSUED FOR CONSTRUCTION	13/11/29	

AECOM

DESIGNED BY	PL	CHECKED BY	<i>Handwritten</i>
DRAWN BY	JD	APPROVED BY	<i>Handwritten</i>
HOR. SCALE	1:500	RELEASED FOR CONSTRUCTION	<i>Handwritten</i>
VERT. SCALE	N/A	DATE	<i>11/27/13</i>

PROFESSIONAL'S SEAL
 PROVINCE OF MANITOBA
2013
 K.W. FITCHETT
Nov 28/13
 REGISTERED ENGINEER
 CONSULTANT DRAWING NO. 60250984-01-C-2013-R0X.mxd

THE CITY OF WINNIPEG WATER AND WASTE DEPARTMENT

2013 SEWER RENEWALS BY CIPP LINING CONTRACT 11 RITCHOT ST
 2ND MH N OF DOLLARD BV ON RITCHOT ST TO 1ST MH S OF HAMEL AV

SHEET	35 OF 41
CITY DRAWING NUMBER	10566 REV 0