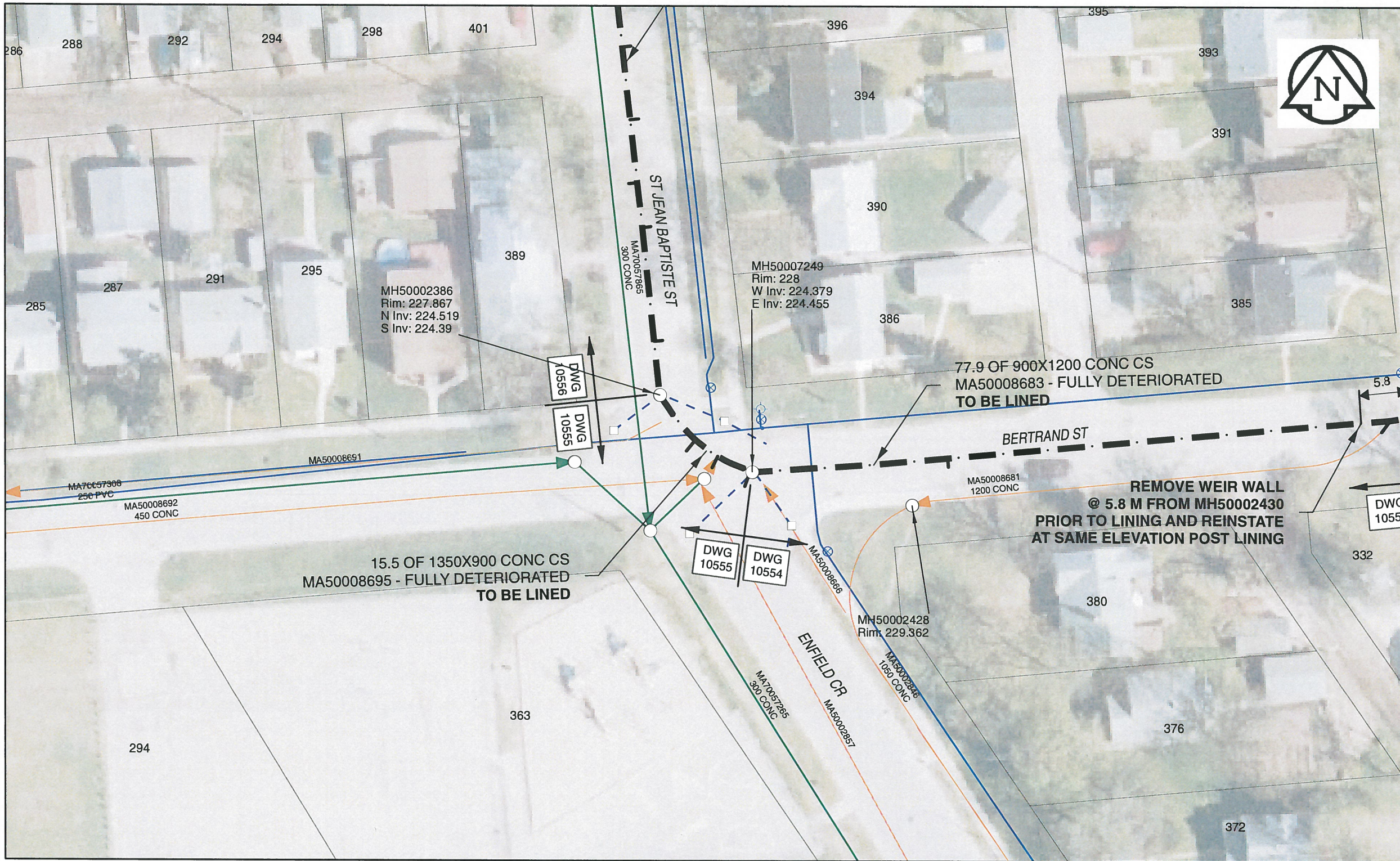


B SIZE 11" X 17" (279mm x 432mm)



**Sewer Junction Information**

(From Video Inspection)

Reference MH	Distance	Size	Clock
S-MH50007249	006.0	150	10

**WARNING**  
 IF POWER EQUIPMENT OR EXPLOSIVES ARE TO BE USED FOR EXCAVATION ON THIS PROJECT, THE CONTRACTOR MUST:  
 1) NOTIFY THE GAS COMPANY OF THE PROPOSED LOCATION OF EXCAVATION.  
 2) TAKE PRECAUTION TO AVOID DAMAGE TO GAS COMPANY INSTALLATIONS.  
 SEE PROVINCIAL REGULATION 140/92 FOR DETAILS

**AECOM**  
 Certificate of Authorization  
 AECOM Canada Ltd.  
 No. 4671 Date: *Nov. 28/2013*

**METRIC**  
 WHOLE NUMBERS INDICATE MILLIMETRES  
 DECIMALIZED NUMBERS INDICATE METRES  
 0 2.5 5 10 15 20  
 Meters

BID OPPORTUNITY NO. 679-2013

AECOM REVIEW DRAFT CHK

FILE NAME: 2013.pdf Saved By: CM

**LOCATION APPROVED UNDERGROUND STRUCTURES**

SUPR. U/G STRUCTURES	DATE

**NOTE:**  
 LOCATION OF UNDERGROUND STRUCTURES AS SHOWN ARE BASED ON THE BEST INFORMATION AVAILABLE. BUT NO GUARANTEE IS GIVEN THAT ALL EXISTING UTILITIES ARE SHOWN OR THAT THE GIVEN LOCATIONS ARE EXACT. CONFIRMATION OF EXISTENCE AND EXACT LOCATION OF ALL SERVICES MUST BE OBTAINED FROM THE INDIVIDUAL UTILITIES BEFORE PROCEEDING WITH CONSTRUCTION.

Can-Net GPS Reference Station WINN/810

NO.	REVISIONS	YY/MM/DD	BY
0	ISSUED FOR CONSTRUCTION	13/11/29	

**AECOM**

DESIGNED BY	PL	CHECKED BY	<i>[Signature]</i>
DRAWN BY	JD	APPROVED BY	<i>[Signature]</i>
HOR. SCALE	1:500	RELEASED FOR CONSTRUCTION	<i>[Signature]</i>
VERT. SCALE	N/A	DATE	<i>11-27-13</i>

PROFESSIONAL'S SEAL  
 PROVINCE OF MANITOBA  
*[Signature]*  
 K.W.  
**FITCHETT**  
*[Signature]*  
 REGISTERED ENGINEER  
 CONSULTANT DRAWING NO.  
 60250984-01-C-2013-R0X.mxd

**THE CITY OF WINNIPEG**  
 WATER AND WASTE DEPARTMENT

**2013 SEWER RENEWALS BY CIPP LINING CONTRACT 11 BERTRAND ST**  
 MH AT JCT OF ENFIELD CR AND BERTRAND ST TO 1ST MH N ON ST JEAN

SHEET 24 OF 41  
 CITY DRAWING NUMBER  
**10555** REV 0