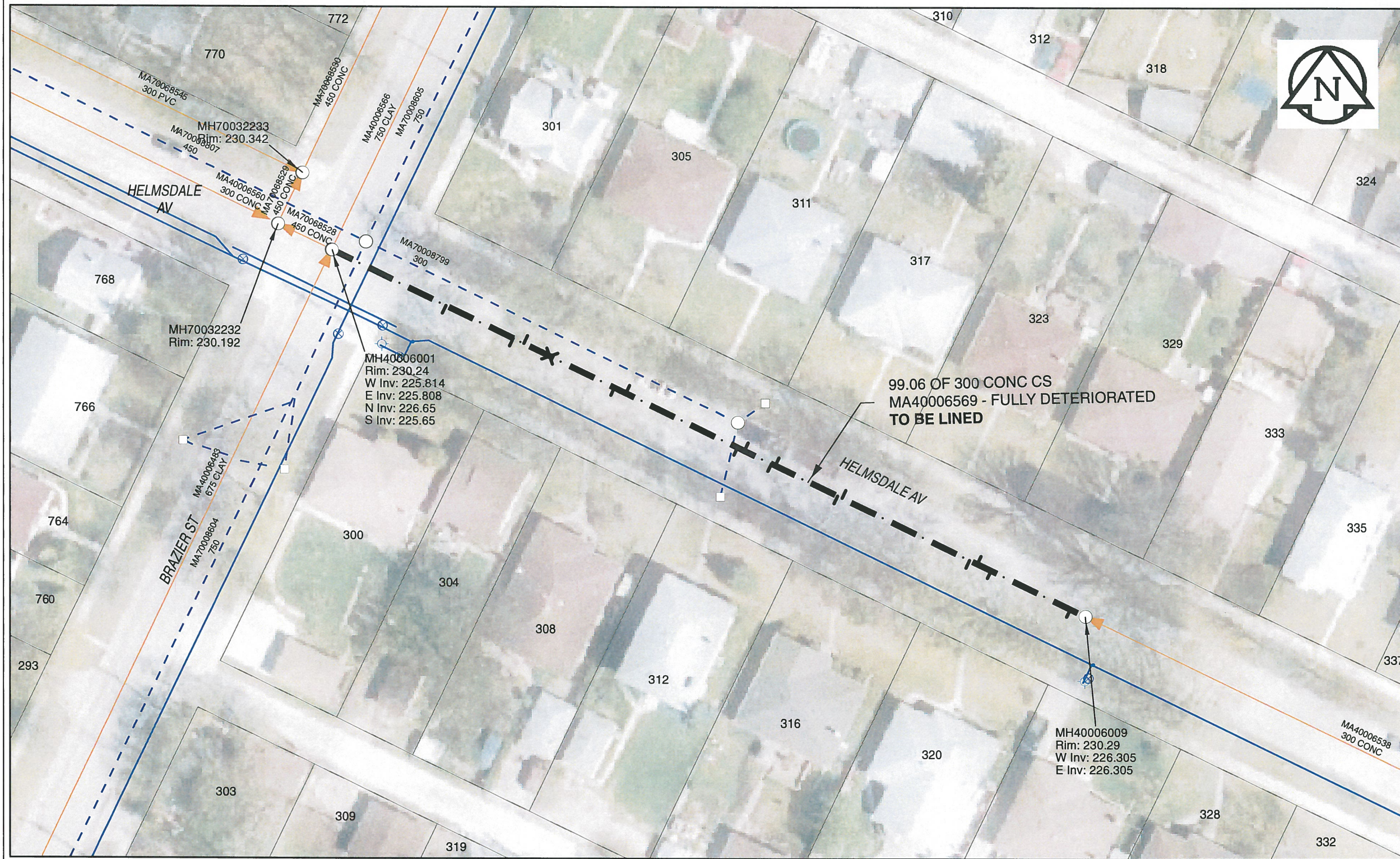


B SIZE 11" X 17" (279mm x 432mm)



**Sewer Junction Information**  
(From Video Inspection)

Reference MH	Distance	Size	Clock
S-MH40006009	002.0	150	10
-	012.4	150	10
-	014.2	150	02
-	015.2	150	10
-	031.9	150	02
-	032.5	150	10
-	040.7	150	02
-	041.2	150	10
-	044.8	150	02
-	045.7	150	10
-	060.4	150	02
-	061.9	150	10
-	070.4	150	12
-	073.8	150	02
-	075.2	150	10
-	084.0	150	11

**WARNING**  
IF POWER EQUIPMENT OR EXPLOSIVES ARE TO BE USED FOR EXCAVATION ON THIS PROJECT, THE CONTRACTOR MUST:  
1) NOTIFY THE GAS COMPANY OF THE PROPOSED LOCATION OF EXCAVATION.  
2) TAKE PRECAUTION TO AVOID DAMAGE TO GAS COMPANY INSTALLATIONS.  
SEE PROVINCIAL REGULATION 140/92 FOR DETAILS

**APEGM**  
Certificate of Authorization  
AECOM Canada Ltd.  
No. 4671 Date: Nov. 28/2013

**METRIC**  
WHOLE NUMBERS INDICATE MILLIMETRES  
DECIMALIZED NUMBERS INDICATE METRES  
0 2.5 5 10 15 20  
Meters

BID OPPORTUNITY NO. 679-2013

AECOM REVIEW	DRAFT CHK	FILE NAME: 2013.pdf Saved By: CM
		LOCATION APPROVED UNDERGROUND STRUCTURES
Can-Net GPS Reference Station WINN/810		
SUPR. U/G STRUCTURES COMMITTEE		DATE
NOTE: LOCATION OF UNDERGROUND STRUCTURES AS SHOWN ARE BASED ON THE BEST INFORMATION AVAILABLE. BUT NO GUARANTEE IS GIVEN THAT ALL EXISTING UTILITIES ARE SHOWN OR THAT THE GIVEN LOCATIONS ARE EXACT. CONFIRMATION OF EXISTENCE AND EXACT LOCATION OF ALL SERVICES MUST BE OBTAINED FROM THE INDIVIDUAL UTILITIES BEFORE PROCEEDING WITH CONSTRUCTION.		
0	ISSUED FOR CONSTRUCTION	13/11/29
NO.	REVISIONS	YY/MM/DD BY

**AECOM**

DESIGNED BY	PL	CHECKED BY	<i>[Signature]</i>
DRAWN BY	JD	APPROVED BY	<i>[Signature]</i>
HOR. SCALE	1:500	RELEASED FOR CONSTRUCTION	<i>[Signature]</i>
VERT. SCALE	N/A	DATE	<u>11-27-13</u>

PROFESSIONAL'S SEAL  
PROVINCE OF MANITOBA  
K.W. FITCHETT  
REGISTERED ENGINEER  
60250984-01-C-2013-R0X.mxd

**THE CITY OF WINNIPEG**  
WATER AND WASTE DEPARTMENT

2013 SEWER RENEWALS  
BY CIPP LINING  
CONTRACT 11  
HELMSDALE AV  
1ST MH E OF BRAZIER ST ON HELMSDALE AV TO MH AT JCT OF BRAZIER ST

SHEET 8 OF 41  
CITY DRAWING NUMBER  
**10537** REV 0