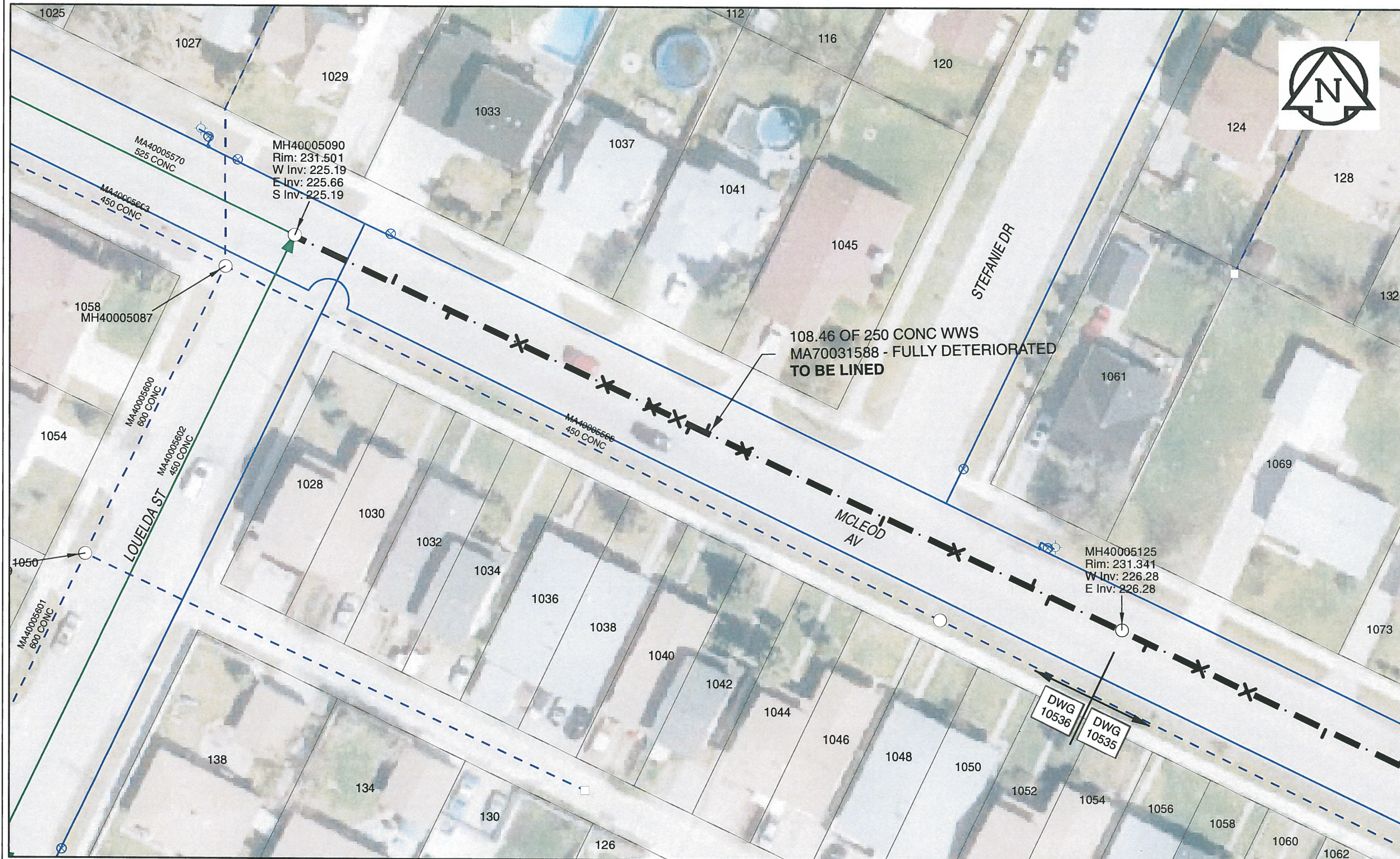


B SIZE 11" X 17" (279mm x 432mm)



**Sewer Junction Information**  
(From Video Inspection)

Reference MH	Distance	Size	Clock
S-MH40005125	009.6	150	11
-	012.0	200	01
-	021.8	150	12
-	031.3	150	11
-	049.5	150	12
-	054.6	150	01
-	056.6	150	10
-	058.4	150	12
-	061.7	150	12
-	067.8	150	12
-	079.0	150	12
-	088.0	150	10
-	095.5	150	01

**WARNING**  
IF POWER EQUIPMENT OR EXPLOSIVES ARE TO BE USED FOR EXCAVATION ON THIS PROJECT, THE CONTRACTOR MUST:  
1) NOTIFY THE GAS COMPANY OF THE PROPOSED LOCATION OF EXCAVATION.  
2) TAKE PRECAUTION TO AVOID DAMAGE TO GAS COMPANY INSTALLATIONS.  
SEE PROVINCIAL REGULATION 140/92 FOR DETAILS

**AECOM**  
Certificate of Authorization  
AECOM Canada Ltd.  
No. 4671 Date: *Nov. 28/2013*

**METRIC**  
WHOLE NUMBERS INDICATE MILLIMETRES  
DECIMALIZED NUMBERS INDICATE METRES  
0 2.5 5 10 15 20  
Meters

BID OPPORTUNITY NO. 679-2013

AECOM REVIEW DRAFT CHK  
FILE NAME: 2013.pdf Saved By: CM

**LOCATION APPROVED UNDERGROUND STRUCTURES**

SUPR. U/G STRUCTURES COMMITTEE	DATE

**NOTE:**  
LOCATION OF UNDERGROUND STRUCTURES AS SHOWN ARE BASED ON THE BEST INFORMATION AVAILABLE. BUT NO GUARANTEE IS GIVEN THAT ALL EXISTING UTILITIES ARE SHOWN OR THAT THE GIVEN LOCATIONS ARE EXACT. CONFIRMATION OF ALL SERVICES MUST BE OBTAINED FROM THE INDIVIDUAL UTILITIES BEFORE PROCEEDING WITH CONSTRUCTION.

Can-Net GPS Reference Station WINN/810

NO.	REVISIONS	YY/MM/DD	BY
0	ISSUED FOR CONSTRUCTION	13/11/29	

**AECOM**

DESIGNED BY	PL	CHECKED BY	<i>[Signature]</i>
DRAWN BY	JD	APPROVED BY	<i>[Signature]</i>
HOR. SCALE	1:500	RELEASED FOR CONSTRUCTION	<i>[Signature]</i>
VERT. SCALE	N/A	DATE	<i>11-27-13</i>

PROFESSIONAL'S SEAL  
PROVINCE OF MANITOBA  
K.W. FITCHETT  
REGISTERED ENGINEER  
CONSULTANT DRAWING NO. 60250984-01-C-2013-R0X.mxd

**THE CITY OF WINNIPEG**  
WATER AND WASTE DEPARTMENT  
2013 SEWER RENEWALS  
BY CIPP LINING  
CONTRACT 11  
MCLEOD AV  
1ST MH E OF STEFANIE DR ON MCLEOD AV TO MH AT JCT OF LOUELDA ST

SHEET	7 OF 41
CITY DRAWING NUMBER	<b>10536</b>
REV	0