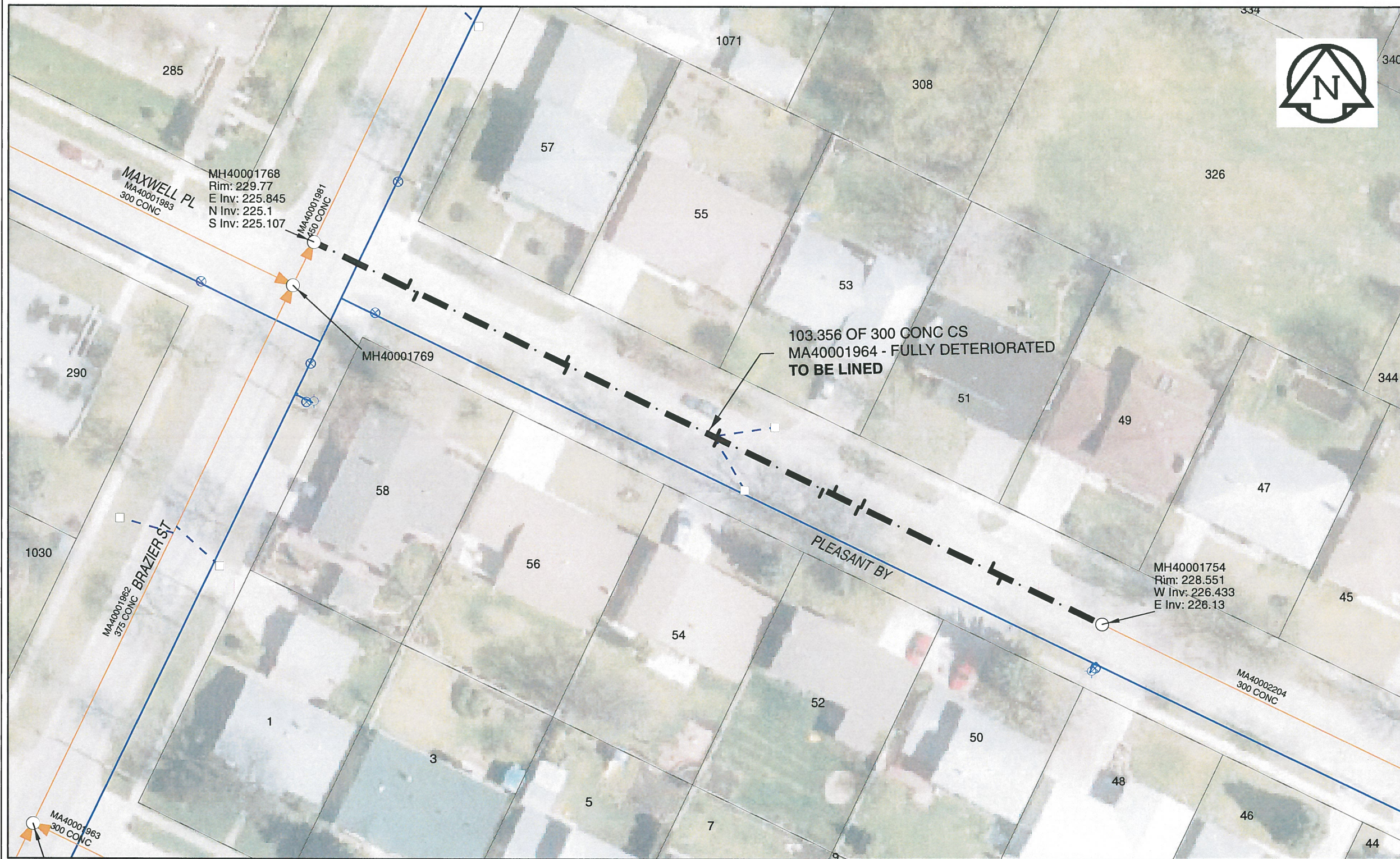


B SIZE 11" X 17" (279mm x 432mm)



Sewer Junction Information

(From Video Inspection)

Reference MH	Distance	Size	Clock
S-MH40001754	013.1	150	10
-	014.6	150	02
-	031.5	150	02
-	031.8	150	10
-	035.2	150	01
-	036.5	150	11
-	050.3	150	10
-	050.5	150	01
-	070.0	150	10
-	070.4	150	01
-	089.7	150	10
-	091.0	150	02

WARNING

IF POWER EQUIPMENT OR EXPLOSIVES ARE TO BE USED FOR EXCAVATION ON THIS PROJECT, THE CONTRACTOR MUST:
 1) NOTIFY THE GAS COMPANY OF THE PROPOSED LOCATION OF EXCAVATION.
 2) TAKE PRECAUTION TO AVOID DAMAGE TO GAS COMPANY INSTALLATIONS.
 SEE PROVINCIAL REGULATION 140/92 FOR DETAILS



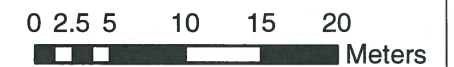
Certificate of Authorization

AECOM Canada Ltd.

No. 4671 Date: *Nov. 28/2013*

METRIC

WHOLE NUMBERS INDICATE MILLIMETRES
 DECIMALIZED NUMBERS INDICATE METRES



BID OPPORTUNITY NO. 679-2013

AECOM REVIEW DRFT CHK

FILE NAME: 2013.pdf Saved By: CM

LOCATION APPROVED UNDERGROUND STRUCTURES

SUPR. U/G STRUCTURES COMMITTEE DATE

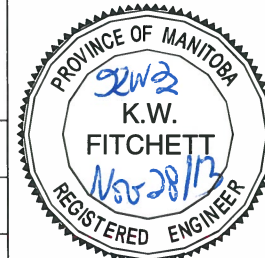
NOTE:
 LOCATION OF UNDERGROUND STRUCTURES AS SHOWN ARE BASED ON THE BEST INFORMATION AVAILABLE. BUT NO GUARANTEE IS GIVEN THAT ALL EXISTING UTILITIES ARE SHOWN OR THAT THE GIVEN LOCATIONS ARE EXACT. CONFIRMATION OF EXISTENCE AND EXACT LOCATION OF ALL SERVICES MUST BE OBTAINED FROM THE INDIVIDUAL UTILITIES BEFORE PROCEEDING WITH CONSTRUCTION.

Can-Net GPS Reference Station WINN/810			
NO.	REVISIONS	YY/MM/DD	BY
0	ISSUED FOR CONSTRUCTION	13/11/29	



DESIGNED BY	PL	CHECKED BY	<i>[Signature]</i>
DRAWN BY	JD	APPROVED BY	<i>[Signature]</i>
HOR. SCALE	1:500	RELEASED FOR CONSTRUCTION	<i>[Signature]</i>
VERT. SCALE	N/A	DATE	<i>11-27-13</i>

PROFESSIONAL'S SEAL



CONSULTANT DRAWING NO.
 60250984-01-C-2013-R0X.mxd



THE CITY OF WINNIPEG WATER AND WASTE DEPARTMENT

2013 SEWER RENEWALS BY CIPP LINING CONTRACT 11 PLEASANT BY
 MH AT BRAZIER ST TO 1ST MH SE OF BRAZIER ST

SHEET 5 OF 41
 CITY DRAWING NUMBER
10534 REV 0