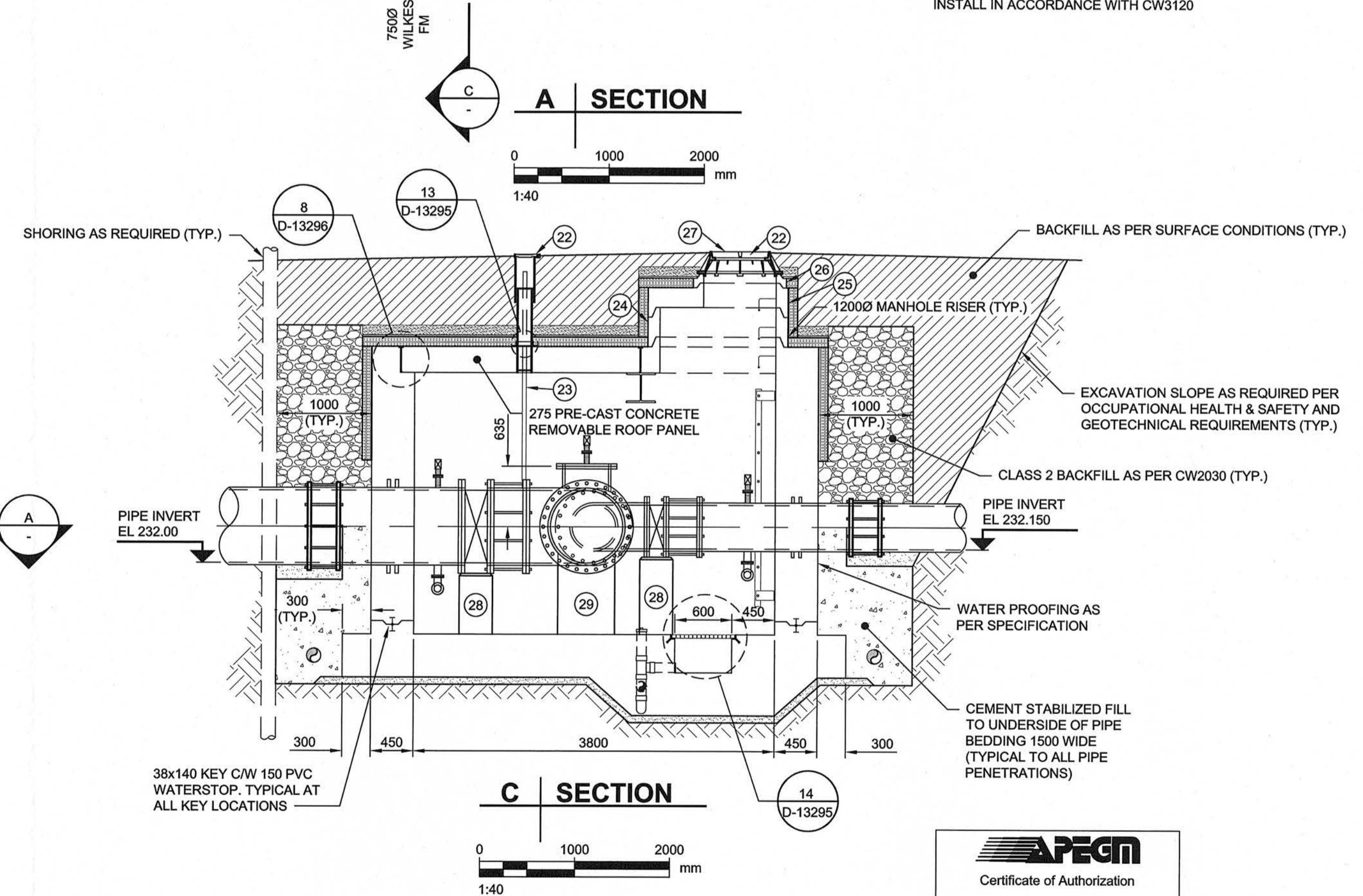
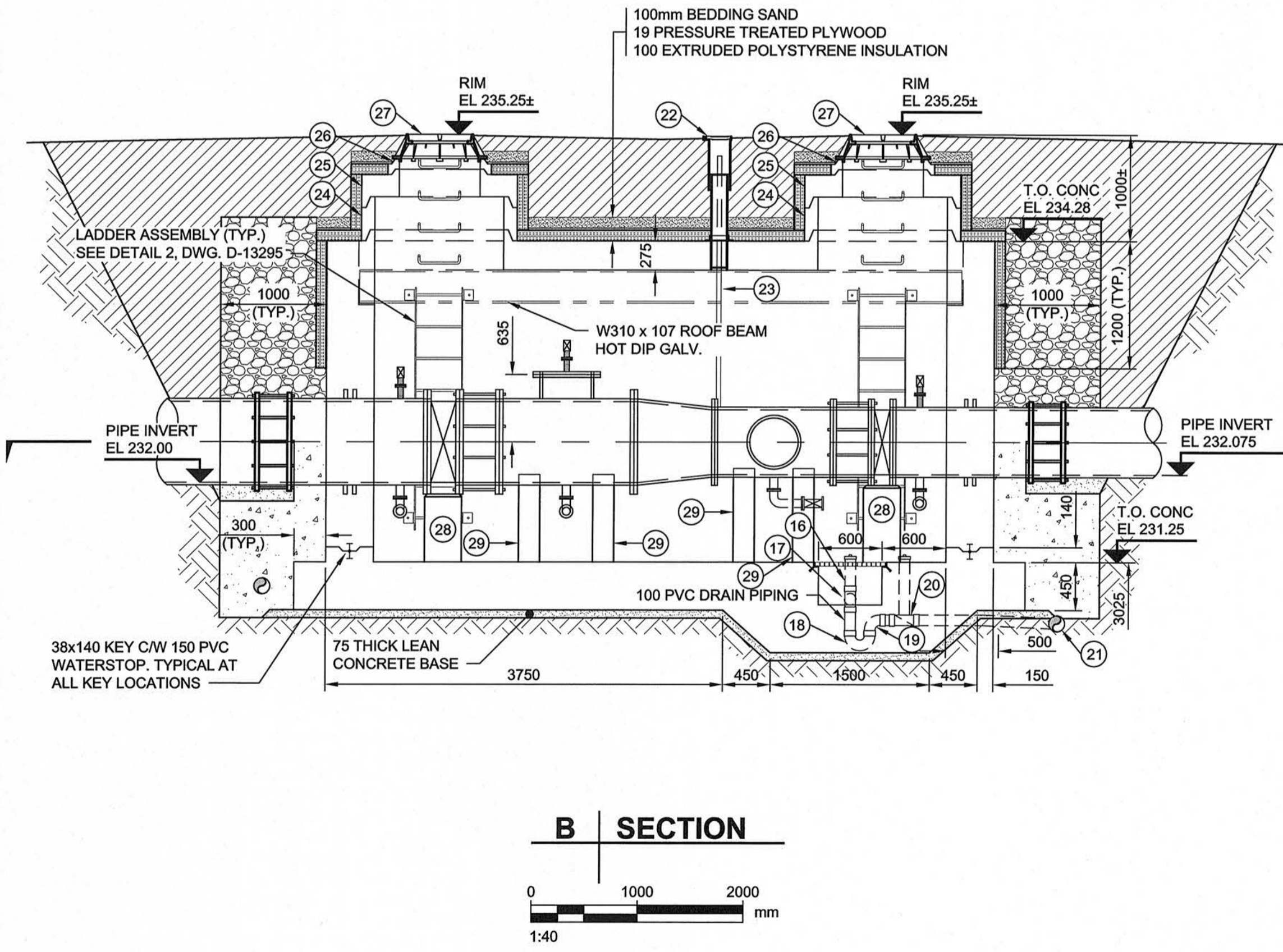
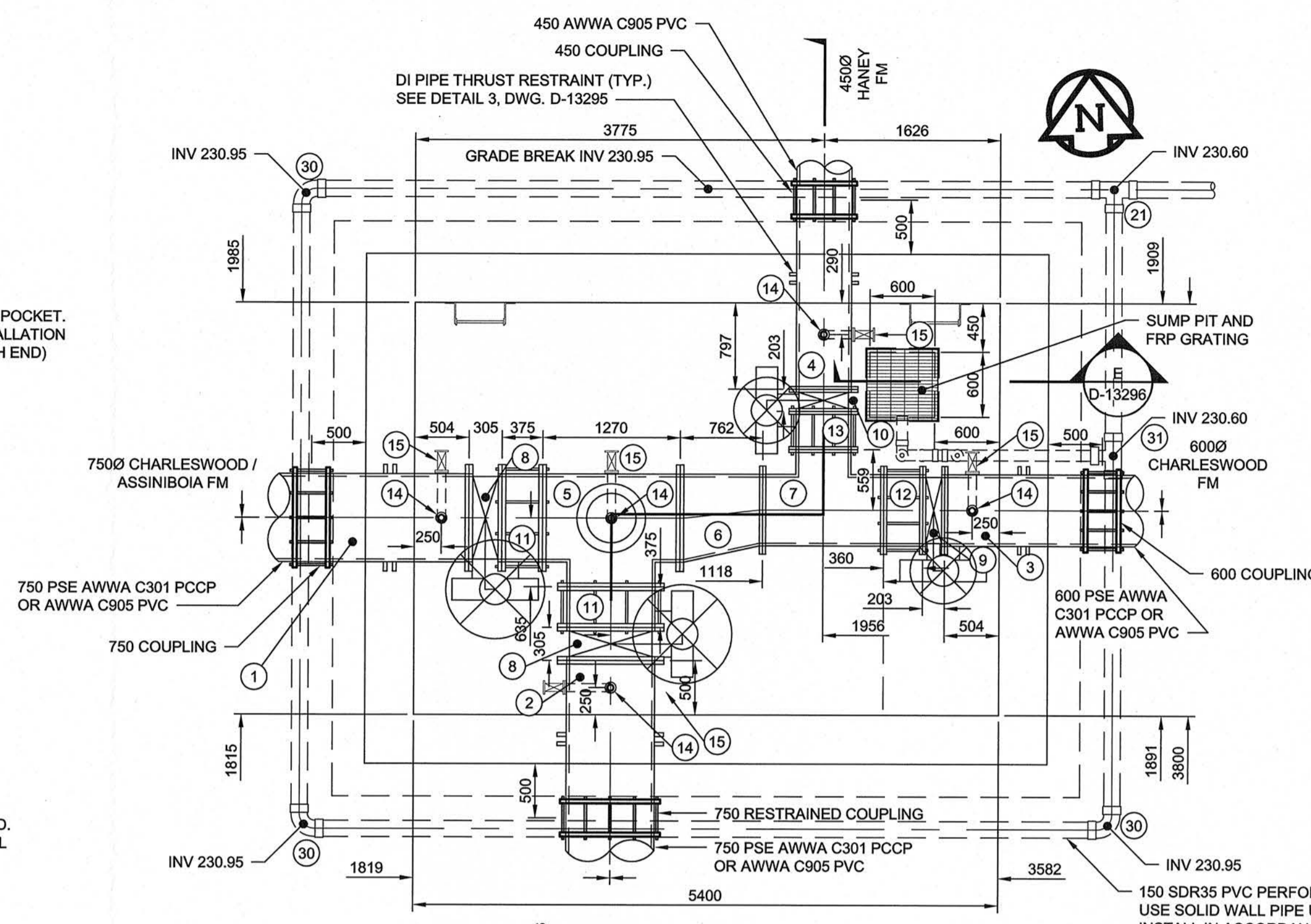
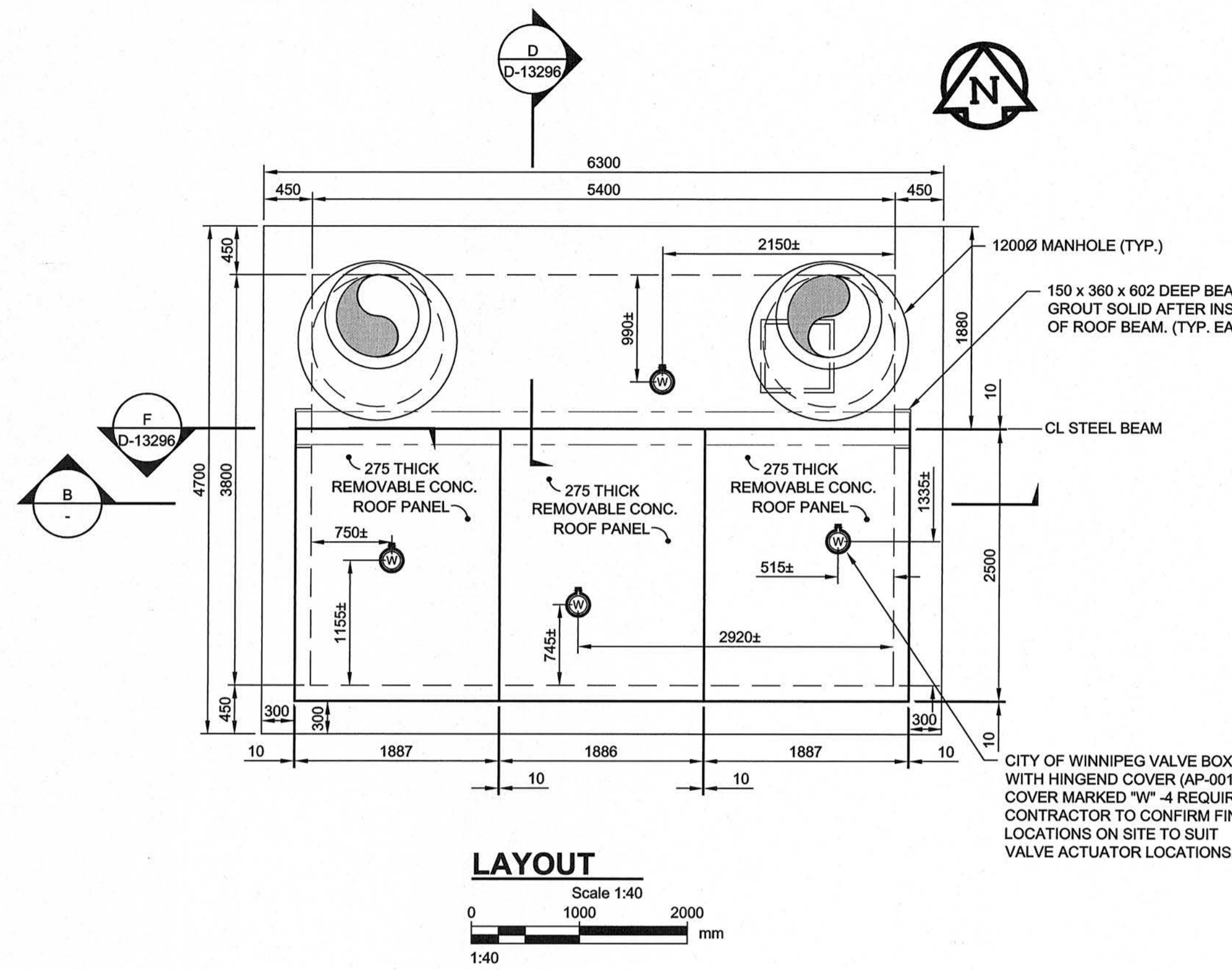


D SIZE 22" x 34" (559mm x 864mm)

PLOT: 7/29/2013 9:32:53 AM

AECOM REVIEW DRFT CHK  
AECOM FILE NAME: 60297251-SHT-00-0000-C-4001.dwg. Saved By: denandemw



MATERIAL LIST			
ITEM	DESCRIPTION	QUANTITY	SIZE
01	FL X PE 750 DI WALL PIECE C/W FLANGE THRUST RESTRAINT, AND 50 TOP AND 75 BOTTOM THREADED PORTS	1	1454
02	FL X PE 750 DI WALL PIECE C/W FLANGE THRUST RESTRAINT, AND 50 TOP AND 75 BOTTOM THREADED PORTS	1	1450
03	FL X PE 600 DI WALL PIECE C/W FLANGE THRUST RESTRAINT, AND 50 TOP AND 75 BOTTOM THREADED PORTS	1	1454
04	FL X PE 450 DI WALL PIECE C/W FLANGE THRUST RESTRAINT, AND 50 TOP AND 75 BOTTOM THREADED PORTS	1	1747
05	FL 750 DI TEE C/W 450 SIDE OUTLET, BLIND FLANGE WITH 50 THREADED PORT, AND 75 BOTTOM THREADED PORT	1	N/A
06	FL 750 X 600 DI REDUCER	1	N/A
07	FL 600 X 600 X 450 TEE	1	N/A
08	FL X FL 750 BUTTERFLY VALVE C/W WORM GEAR OPERATOR	2	305
09	FL X FL 600 BUTTERFLY VALVE C/W WORM GEAR OPERATOR	1	203
10	FL X FL 450 BUTTERFLY VALVE C/W WORM GEAR OPERATOR	1	203
11	750 RESTRAINED DISMANTLING JOINT	2	375±
12	600 RESTRAINED DISMANTLING JOINT	1	360±
13	450 RESTRAINED DISMANTLING JOINT	1	350±
14	50 BLOW OFF ASSEMBLY (SEE DETAIL 4, DWG. D-13295)	5	N/A
15	75 DRAIN ASSEMBLY (SEE DETAIL 5, DWG. D-13295)	5	N/A
16	100 PVC CLEANOUT C/W THREADED CAP	1	N/A
17	100 PVC TEE	1	N/A
18	100 P-TRAP	1	N/A
19	100 PVC 90 DEG BEND	1	N/A
20	100 PVC BACKFLOW VALVE C/W THREADED CAP	1	N/A
21	150 X 100 PVC TEE	1	N/A
22	VALVE BOX ASSEMBLY (SEE DETAIL 13, DWG. D-13295)	4	N/A
23	VALVE STEM EXTENSION C/W STONE DISK	4	N/A
24	1200 X 310 PRECAST MH RISER C/W 100 POLYURETHANE PRE-INSULATION	2	N/A
25	1200 X 750 PRECAST MH FLATTOP REDUCER C/W 100 POLYURETHANE PRE-INSULATION	2	N/A
26	750 X 150 PRECAST MH RISER C/W 100 POLYURETHANE PRE-INSULATION	2	N/A
27	STD CITY OF WINNIPEG MH FRAME AND SOLID COVER	2	N/A
28	VALVE BASE BLOCK (SEE DETAIL 6, DWG. D-13295)	1	N/A
29	TEE BASE BLOCK (SEE DETAIL 7, DWG. D-13295)	1	N/A
30	150 PVC 90 DEGREE BEND	3	N/A
31	150 PVC TEE	1	N/A

**LOCATION APPROVED**  
UNDERGROUND STRUCTURES

SUPR. U/G STRUCTURES DATE COMMITTEE

NOTE:  
LOCATION OF UNDERGROUND STRUCTURES AS SHOWN ARE BASED ON THE BEST INFORMATION AVAILABLE. BUT NO GUARANTEE IS GIVEN THAT ALL EXISTING UTILITIES ARE SHOWN OR THAT THE GIVEN LOCATIONS ARE EXACT. CONFIRMATION OF EXISTENCE AND EXACT LOCATION OF ALL SERVICES MUST BE OBTAINED FROM THE INDIVIDUAL UTILITIES BEFORE PROCEEDING WITH CONSTRUCTION.

NO.	REVISIONS	DATE	BY
0	ISSUED FOR CONSTRUCTION	13/07/26	ADL

**AECOM**  
WHOLE NUMBERS INDICATE MILLIMETRES  
DECIMALIZED NUMBERS INDICATE METRES

DESIGNED BY ADB  
DRAWN BY ADL  
HOR. SCALE AS NOTED  
VERT. SCALE N/A  
DATE

CHECKED BY [Signature]  
APPROVED BY [Signature]  
RELEASED FOR CONSTRUCTION  
DATE

**APEGM**  
Certificate of Authorization  
AECOM Canada Ltd.  
No. 4671 Date: July 29/13

**THE CITY OF WINNIPEG**  
WATER AND WASTE DEPARTMENT

REPLACEMENT OF FEEDERMAIN VALVE CHAMBER, PIPING & ASSOCIATED WORKS AT ELDRIDGE AVENUE & HANEY STREET

CIVIL  
VALVE CHAMBER SECTIONS

SHEET 03 OF 05  
CITY DRAWING NUMBER  
D-13294  
REV 0

BID OPPORTUNITY NO. 645-2013