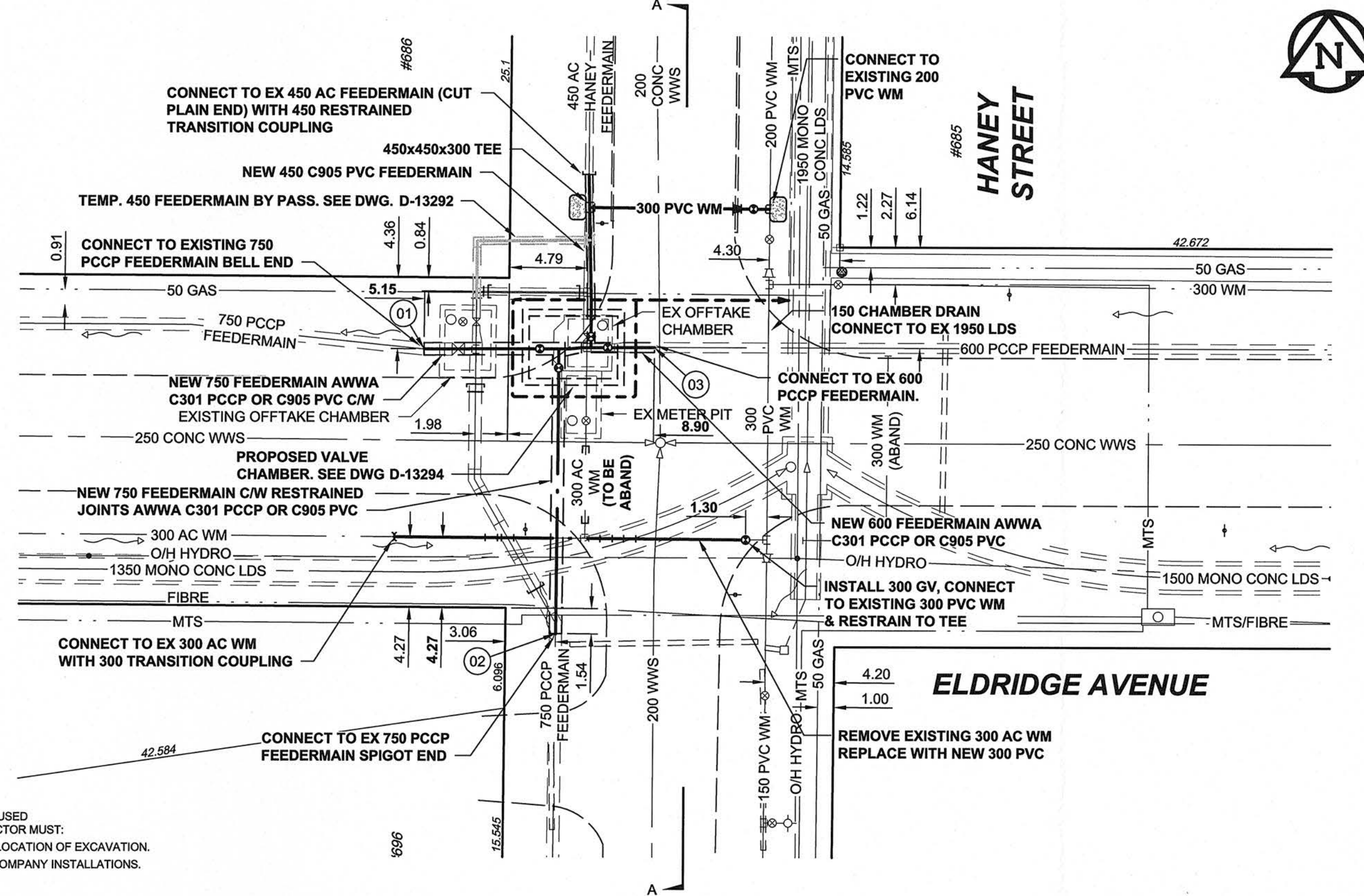
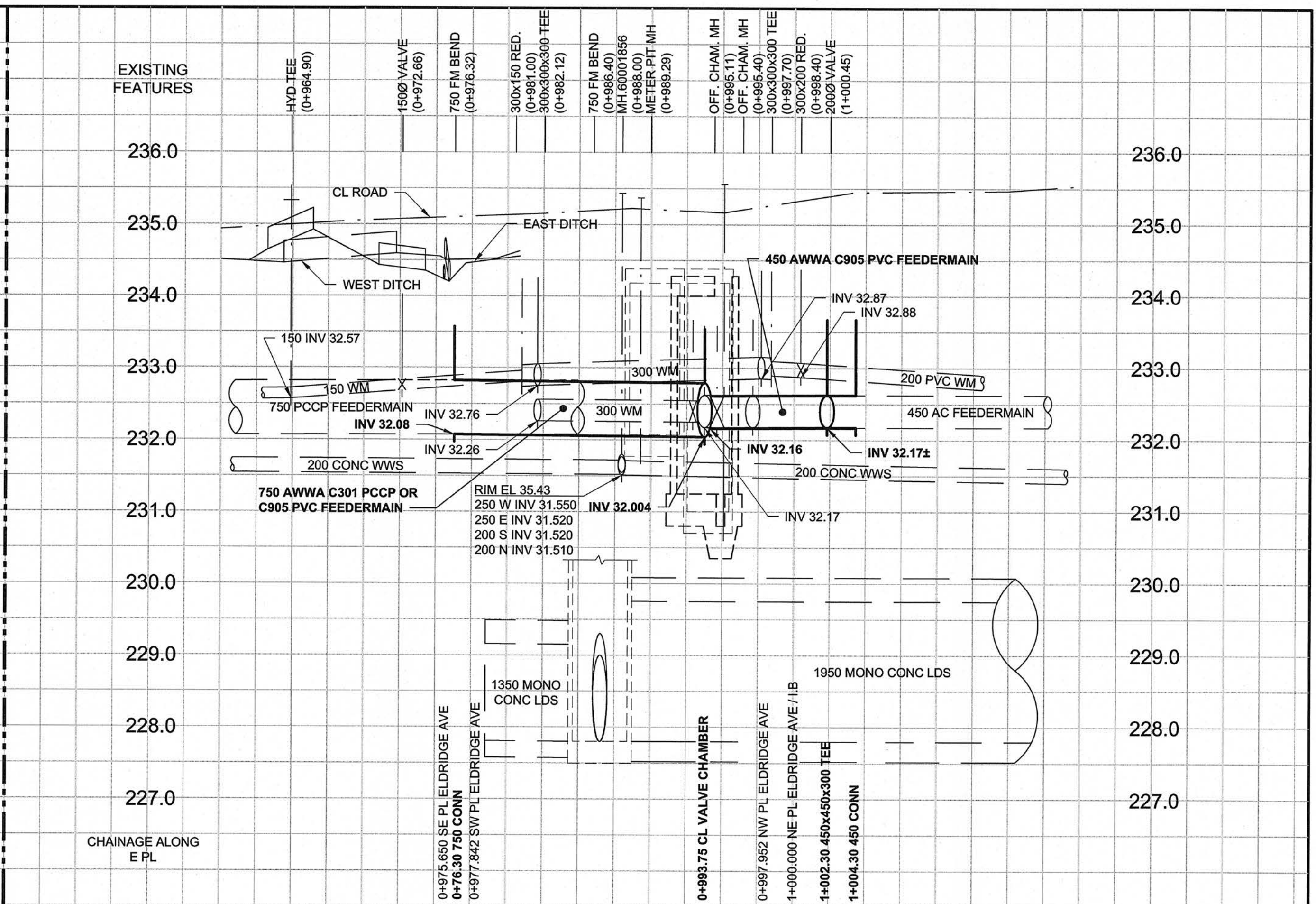
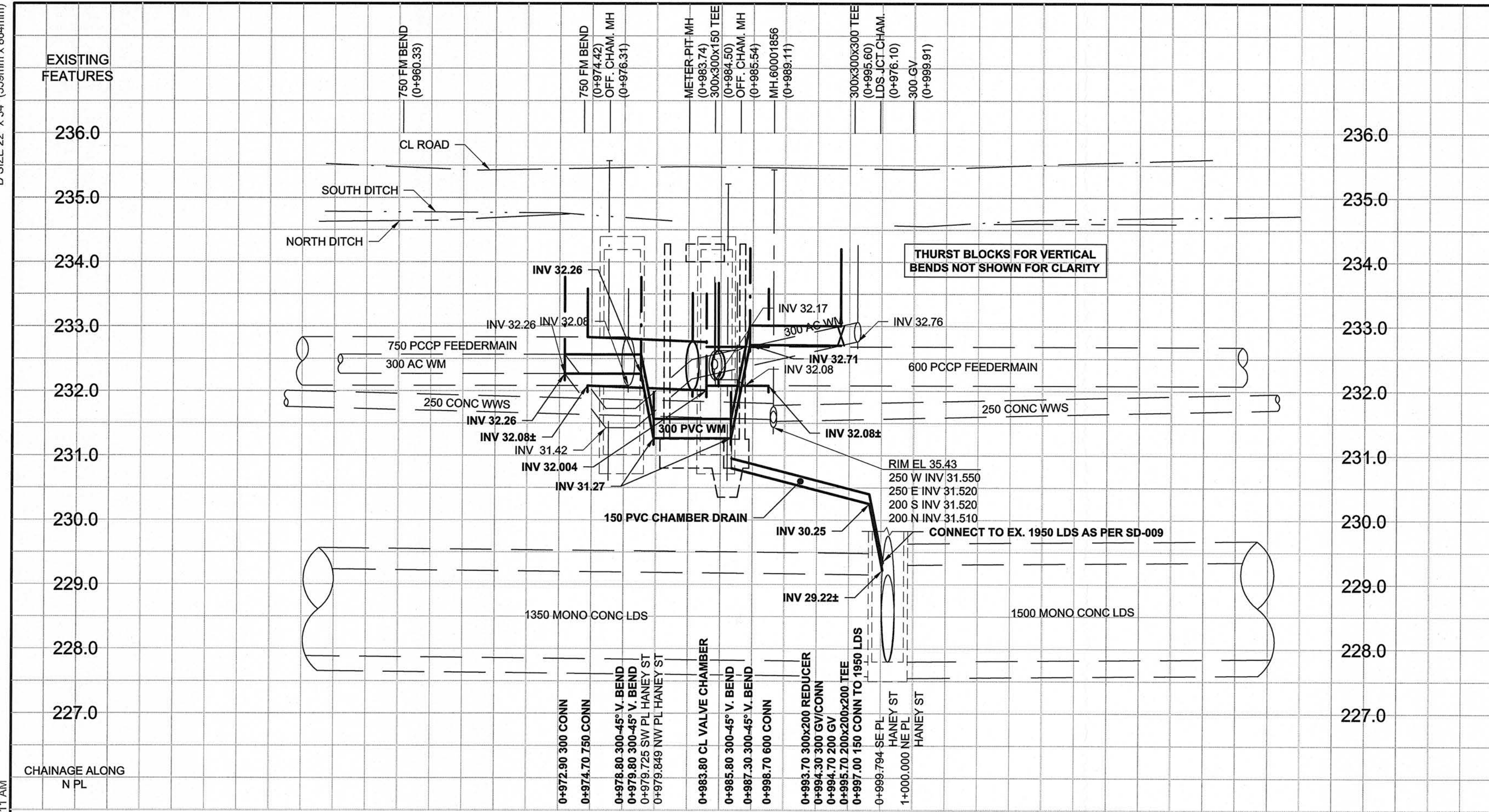


D SIZE 22" x 34" (559mm x 864mm)
 PLOT: 7/29/2013 8:58:11 AM
 AECOM FILE NAME: 60297251-SHT-00-0000-C-0002.dwg Saved By: denaldemw
 AECOM REVIEW DRFT CHK



COORDINATES			
POINT	NORTHING	EASTING	DESCRIPTION
01	5523693.732	624611.730	TIE-IN JOINT LOCATION FOR CHARLESWOOD-ASSINIBOIA FEEDERMAIN
02	5523676.166	624619.340	TIE-IN JOINT LOCATION FOR WILKES AVENUE FEEDERMAIN
03	5523693.426	624625.775	TIE-IN JOINT LOCATION FOR CHARLESWOOD FEEDERMAIN JOINT LOCATION APPROXIMATE, ±3.0m

- NOTES**
- CONFIRM ALL FEEDERMAIN TIE-IN JOINT LOCATIONS AND ELEVATIONS PRIOR TO CONSTRUCTION.
 - TIE-IN 600 CHARLESWOOD FEEDERMAIN DURING INSTALLATION OF CHAMBER PIPING. SEE DETAIL, DWG. D-13295 FOR PVC TO EXISTING PCCP CONNECTION DETAIL.
 - A JOINT SHALL BE LOCATED BETWEEN 2-3m FROM CONNECTION OF CHAMBER PIPING TO FEEDERMAIN PIPING.

WARNING

IF POWER EQUIPMENT OR EXPLOSIVES ARE TO BE USED FOR EXCAVATION ON THIS PROJECT, THE CONTRACTOR MUST:

- NOTIFY THE GAS COMPANY OF THE PROPOSED LOCATION OF EXCAVATION.
- TAKE PRECAUTION TO AVOID DAMAGE TO GAS COMPANY INSTALLATIONS. SEE PROVINCIAL REGULATION 140/92 FOR DETAILS.

150 WM	WATERMAIN	150 WM	EXISTING	LEGEND - PLAN	NEW	LEGEND - PROFILE	NEW
○	HYDRANT	+	○	CURB STOP	+	○	WATERMAIN
⊙	VALVE	+	○	REDUCER	+	○	HYDRANT
○	VALVE	+	○	COUPLING	+	○	VALVE
○	LAND DRAINAGE SEWER	○	○	ANODE	+	○	LAND DRAINAGE SEWER
○	WASTE WATER SEWER	○	○	HYDRO	+	○	WASTE WATER SEWER
○	MANHOLE	○	○	MTS	+	○	PAVEMENT CROWN
○	CATCH BASIN	○	○	GAS	+	○	N/W PROPERTY LINE
○	CURB INLET	○	○	TESTHOLE	+	○	S/E PROPERTY LINE
○	CULVERT	○	○	LAMP STANDARD	+	○	N/W GUTTER
○	PIPE ABANDONMENTS	○	○	TREE	+	○	S/E GUTTER
○	SURVEY BAR	○	○			○	
○	EXISTING	○	○			○	
○	LEGEND - PLAN	○	○			○	

LOCATION APPROVED
UNDERGROUND STRUCTURES

SUPR. U/G STRUCTURES DATE COMMITTEE

NOTE:
LOCATION OF UNDERGROUND STRUCTURES AS SHOWN ARE BASED ON THE BEST INFORMATION AVAILABLE. BUT NO GUARANTEE IS GIVEN THAT ALL EXISTING UTILITIES ARE SHOWN OR THAT THE GIVEN LOCATIONS ARE EXACT. CONFIRMATION OF EXISTENCE AND EXACT LOCATION OF ALL SERVICES MUST BE OBTAINED FROM THE INDIVIDUAL UTILITIES BEFORE PROCEEDING WITH CONSTRUCTION.

0	ISSUED FOR CONSTRUCTION	13/07/28	ADL
NO.	REVISIONS	YYMMDD	BY

METRIC
WHOLE NUMBERS INDICATE MILLIMETRES
DECIMALIZED NUMBERS INDICATE METRES

APEGM
Certificate of Authorization
AECOM Canada Ltd.
No. 4671 Date: July 29/13

AECOM

DESIGNED BY	ADB	CHECKED BY	ccw
DRAWN BY	ADL	APPROVED BY	ADL
HOR. SCALE	1:250	RELEASED FOR CONSTRUCTION	ADL
VERT. SCALE	1:50	DATE	July 29/13

PROFESSIONAL'S SEAL
PROVINCE OF MANITOBA
A.D. BRAUN
Member
24453
July 29/13
REGISTERED PROFESSIONAL ENGINEER

CONSULTANT DRAWING NO.
60297251-SHT-00-0000-C-0002

BID OPPORTUNITY NO. 645-2013

THE CITY OF WINNIPEG
WATER AND WASTE DEPARTMENT

REPLACEMENT OF FEEDERMAIN VALVE CHAMBER, PIPING & ASSOCIATED WORKS AT ELDRIDGE AVENUE & HANEY STREET

CIVIL
PLAN / PROFILE
ELDRIDGE AVENUE AND HANEY STREET

SHEET 02 OF 05
CITY DRAWING NUMBER
D-13293
REV 0