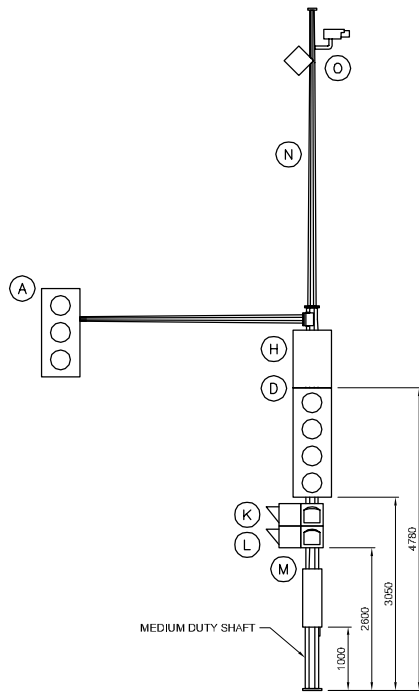
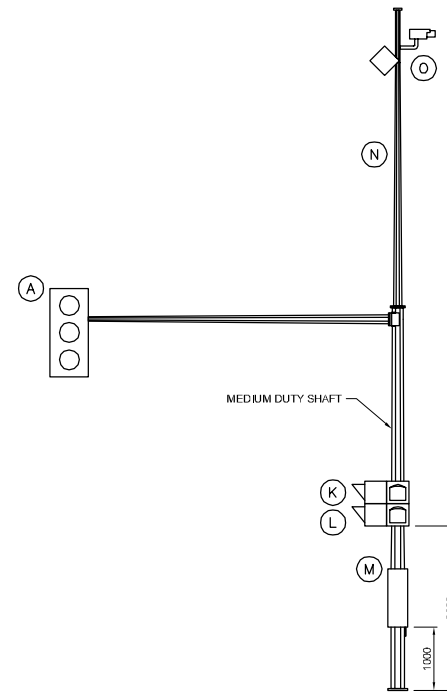


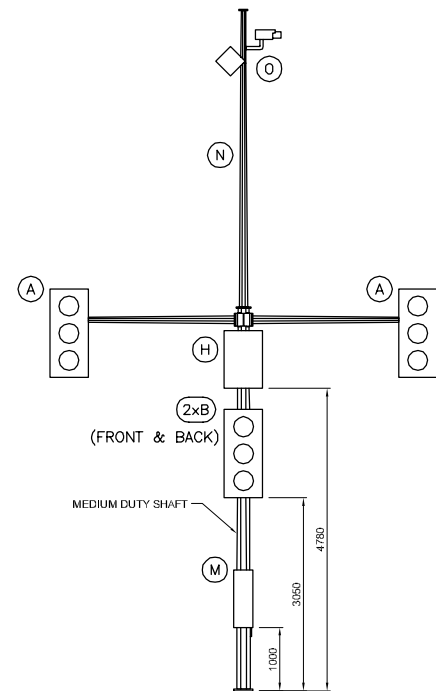
M8-Ga-E



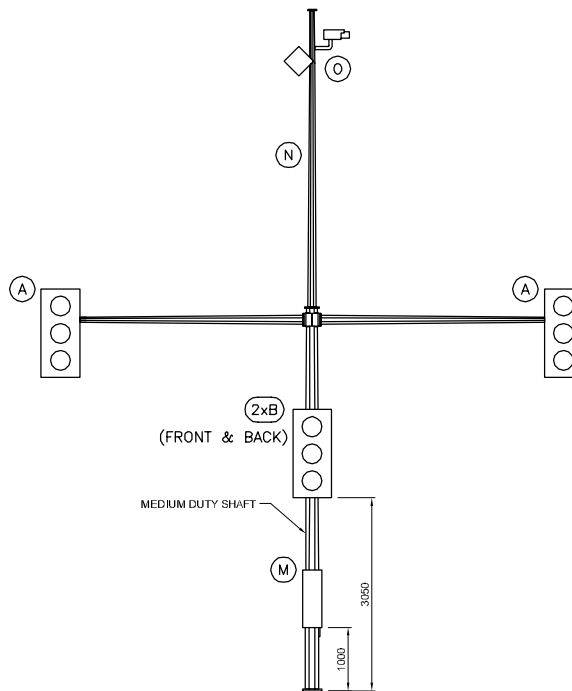
M12-Ga-E



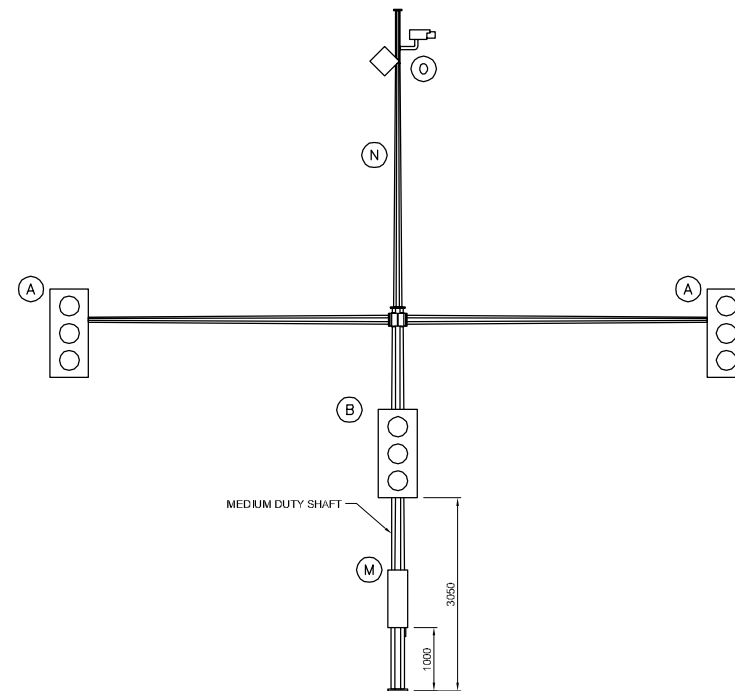
M16-Ga-E



M8/8-Gb-E



M12/12-Gb-E  
M12/8-Gb-E



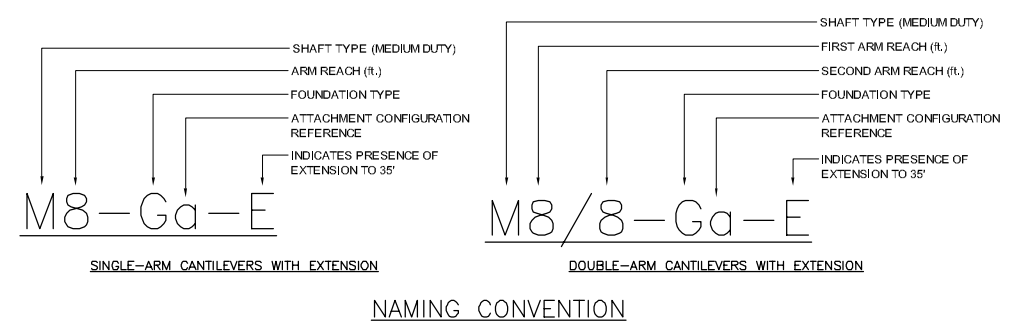
M16/16-Gb-E  
M16/12-Gb-E  
M16/8-Gb-E

**NOTE:**

1. ALL CONFIGURATIONS TO BE INSTALLED ON TYPE G-T BREAKAWAY BASE.
2. REFER TO SHEET 1 FOR DESIGN NOTES AND ATTACHMENT DATA.
3. LOAD CONFIGURATIONS SHOWING SINGLE-ARM CANTILEVER ARM REACH TO THE LEFT, REACH TO THE RIGHT ALSO PERMITTED.

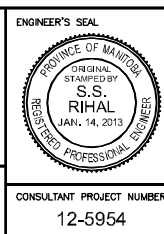
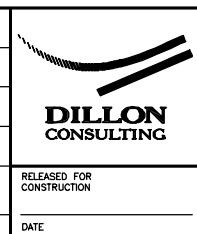


REDUCED DRAWING  
N.T.S.



NO.	REVISIONS	DATE	BY	DATE
1	ISSUED BY DILLON CONSULTING	1/14/13	CDW	

DESIGNED BY	CDW
DRAWN BY	JGW
CHECKED BY	SSR
APPROVED BY	-
HOR. SCALE	NTS
VERTICAL	NTS



**THE CITY OF WINNIPEG**  
PUBLIC WORKS DEPARTMENT

ATTACHMENT CONFIGURATIONS FOR MEDIUM DUTY STRUCTURES - 8', 12' & 16' ARMS WITH EXTENSION

CITY DRAWING NUMBER	N/A
SHEET	4 OF 13
CONSULTANT DRAWING NUMBER	N/A

CONSULTANT PROJECT NUMBER: 12-5954

G:\CAD\125954\Contract\POLE CONFIGURATIONS.dwg