

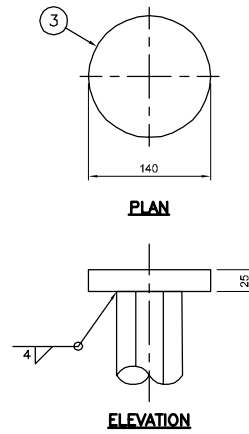
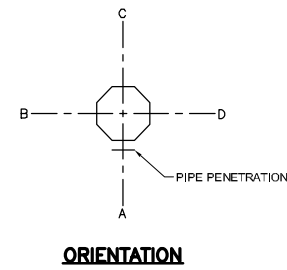
**BILL OF MATERIALS**

MK. NO.	QTY. REQ'D.	DESCRIPTION	SIZE	MATERIAL	REMARKS	LINE NO.
		<b>VERTICAL EXTENSION TO 10.7 m (35') – E</b>				
1	1	OCTAGONAL SECTION SHAFT	127 A/F – 75 A/F x 3.083	CSA G40.21 350W		2
2	1	EXTENSION FLANGE PLATE	16 x 228 x 228	CSA G40.21 300W		3
3	1	MASS DAMPER PLATE	140 DIA. x 25 THK.	CSA G40.21 300W		4
4	4	EXTENSION FLANGE PLATE BOLTS	19 (3/4") DIA. x 70	ASTM A325	SEE DETAIL C	5
5	1	BACK-UP STRIP PLATE	4.554 x 40	CSA G40.21 350W		6
6	1	PIPE PENETRATION (1 1/2") C/W PLUG	48 O.D. X 25	ASTM A53 GR. B SCH. 40	REMOVE BURRS AND SHARP EDGES	7

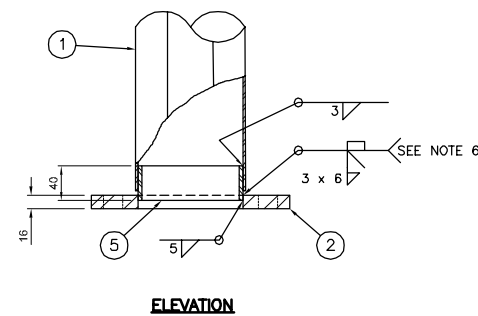
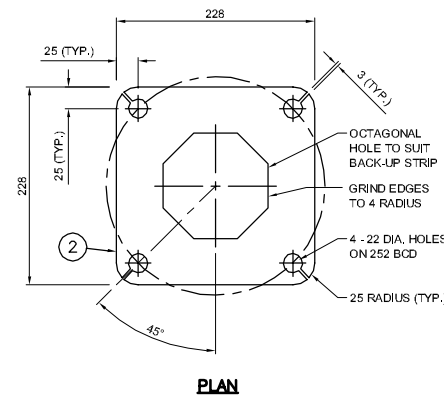
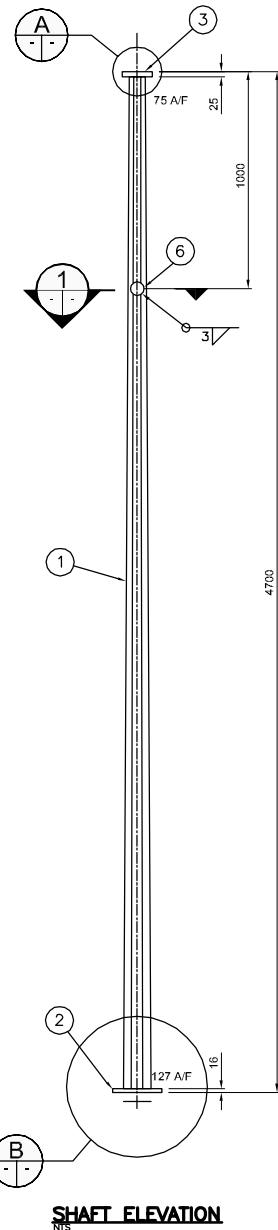
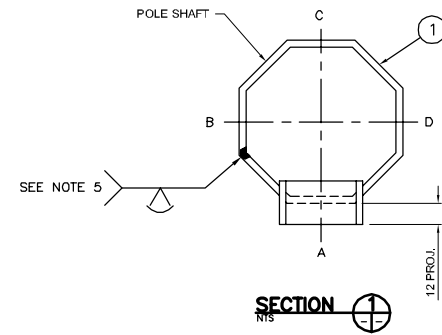
APPROXIMATE TOTAL MASS = 46 kg

**NOTES:**

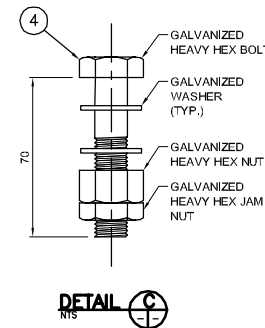
- ALL MATERIALS, EXCEPT STAINLESS STEEL ITEMS, SHALL BE HOT DIP GALVANIZED IN ACCORDANCE WITH ASTM A123-09 (PLUS LATEST REVISIONS) WITH NET RETENTION OF 610 g/m<sup>2</sup>.
- PROVIDE RAISED IDENTIFICATION NUMBER WITH WELDING ELECTRODE AS PER SPECIFICATION, STRUCTURE CODE = E.
- SHIP WITH NUTS AND WASHERS INSTALLED.
- GRIND ALL SHARP POINTS AND EDGES.
- LONGITUDINAL SEAM WELD SHALL HAVE 60% MINIMUM PENETRATION EXCEPT WITHIN 150 mm OF EXTENSION FLANGE PLATE AND MASS DAMPER PLATE SHALL BE COMPLETE PENETRATION.
- EXTERIOR WELD JOINING SHAFT TO EXTENSION FLANGE PLATE SHALL BE AN UNEQUAL LEG COMPLETE PENETRATION WELD WITH THE LONG LEG OF THE WELD ALONG THE SHAFT, TERMINATING AT 30" FROM THE SHAFT'S SURFACE.



**MASS DAMPER PLATE DETAIL**



**EXTENSION FLANGE PLATE DETAIL**



G:\CAD\128954\Contract\Current\EXTENSION & STRAIGHT POLE.dwg



**REDUCED DRAWING**  
N.T.S.

B.M. ELEV. DESIGNED BY CDW DRAWN BY JGW CHECKED BY SSR APPROVED BY HOR. SCALE NTS VERTICAL SCALE NTS 1 ISSUED BY DILLON CONSULTING 1/14/13 CDW NO. REVISIONS DATE BY DATE		ENGINEER'S SEAL 	<b>THE CITY OF WINNIPEG</b> PUBLIC WORKS DEPARTMENT	
			CITY DRAWING NUMBER N/A	
			SHEET 11 OF 13 CONSULTANT DRAWING NUMBER N/A	
			CONSULTANT PROJECT NUMBER 12-5954	

VERTICAL EXTENSION TO 10.7 m (35')