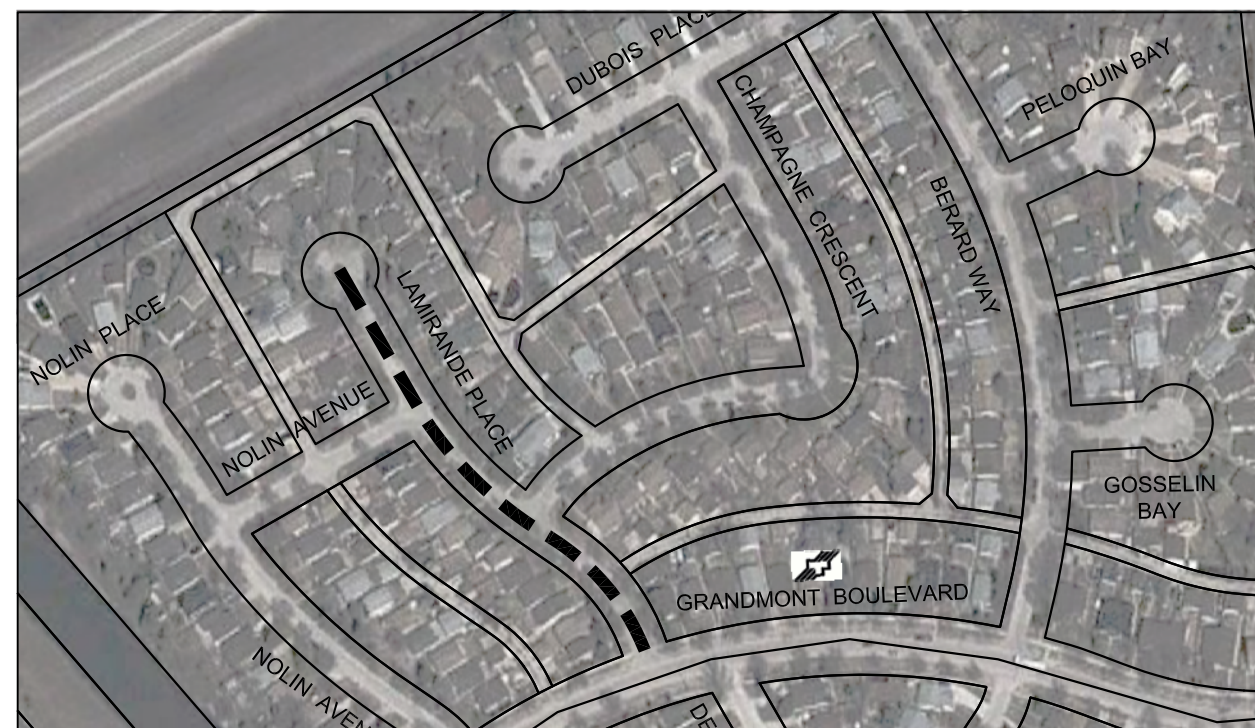


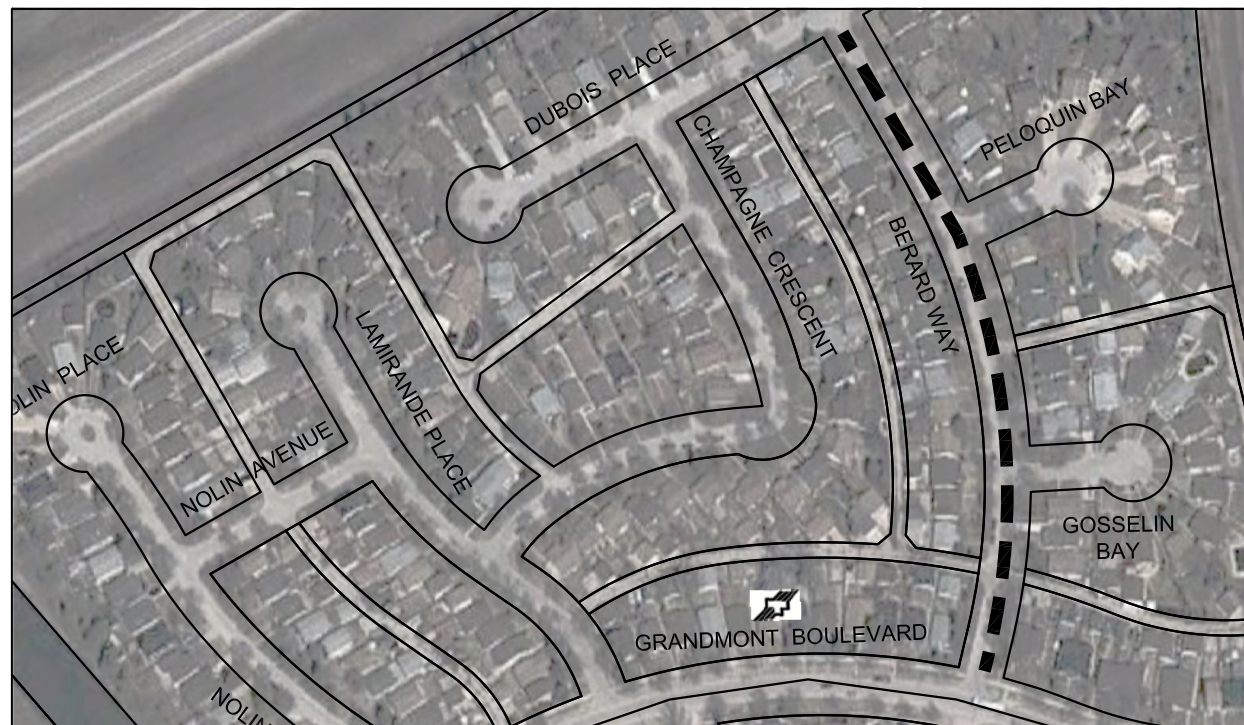
Jun 27, 2013 - 2:52pm
 P:\5513001-5513099\5513066 - 2013 Thin Bituminous Overlay Program\MMM Drawings\Contract 2\Contract Dwg 331-2013-1.06 to 10 270513.dwg - tab:10



POINT WEST DRIVE (NORTH LEG) - POINT WEST WAY / BAIRDMORE BOULEVARD



LAMIRAND PLACE - GRANDMOUNT BOULEVARD / NORTH LIMIT



BERARD WAY - GRANDMOUNT BOULEVARD / DUBOIS PLACE



METRIC
 WHOLE NUMBERS INDICATE MILLIMETRES
 DECIMALIZED NUMBERS INDICATE METRES

LEGEND

- LIMIT OF CONSTRUCTION
- BUS ROUTE
- SCHOOL LOCATION

LOCATIONS APPROVED

UNDERGROUND STRUCTURES
 SIGNED BY: _____ DATE: _____

SUPV U/G STRUCTURES DATE

LOCATION OF UNDERGROUND STRUCTURES AS SHOWN ARE BASED ON THE BEST INFORMATION AVAILABLE BUT NO GUARANTEE IS GIVEN THAT ALL EXISTING UTILITIES ARE SHOWN OR THAT THE GIVEN LOCATIONS ARE EXACT CONFIRMATION OF EXISTENCE AND EXACT LOCATION OF ALL SERVICES MUST BE OBTAINED FROM THE INDIVIDUAL UTILITIES BEFORE PROCEEDING

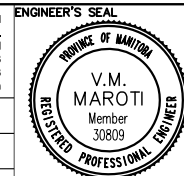
G.B.M. - ELEV. -

NO.	REVISIONS	DATE	BY	DATE	BY
1	ISSUED FOR CONSTRUCTION	13/07/08	VMM		
2					
3					



DESIGNED BY TR
 CHECKED BY JEC
 DRAWN BY TR
 APPROVED BY VM
 HOR. SCALE 1:3000
 VERTICAL -
 DATE: 13/07/08

MMM Group Limited
 Suite 111 - 93 Lombard Ave.
 Winnipeg, MB R3B 3B1
 T. 204.943.3178
 F. 204.943.4948
 www.mmm.ca



CONSULTANT ACAD DWG. NO.
 331-2013.1-10



THE CITY OF WINNIPEG
 PUBLIC WORKS DEPARTMENT
 ENGINEERING DIVISION

2013 THIN BITUMINOUS OVERLAY (TBO) PROGRAM
 POINT WEST DRIVE,
 LAMIRAND PLACE, BERARD WAY

CITY DRAWING NO.
 SHEET 5 OF 5
 DRAWING NO. REV.
 10 0

NOTE: These design documents are prepared solely for the use by the party with whom the design professional has entered into a contract and there are no representations of any kind made by the design professional to any party with whom the design professional has not entered into a contract.