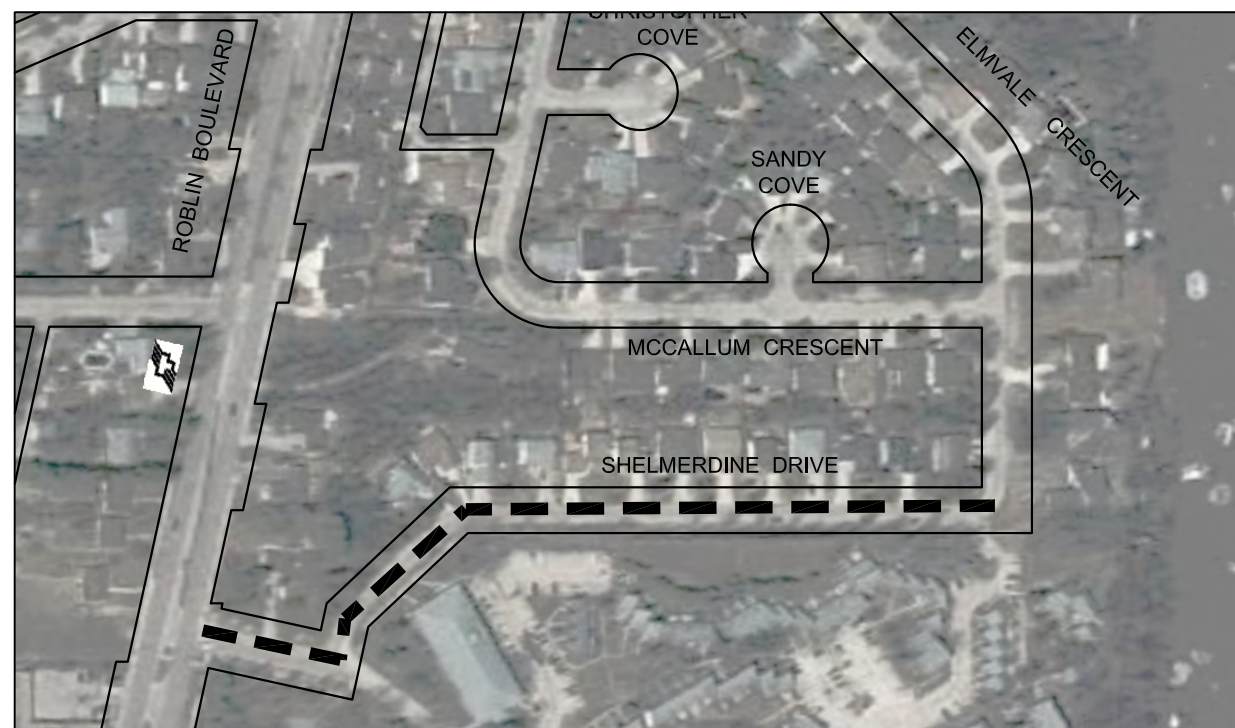




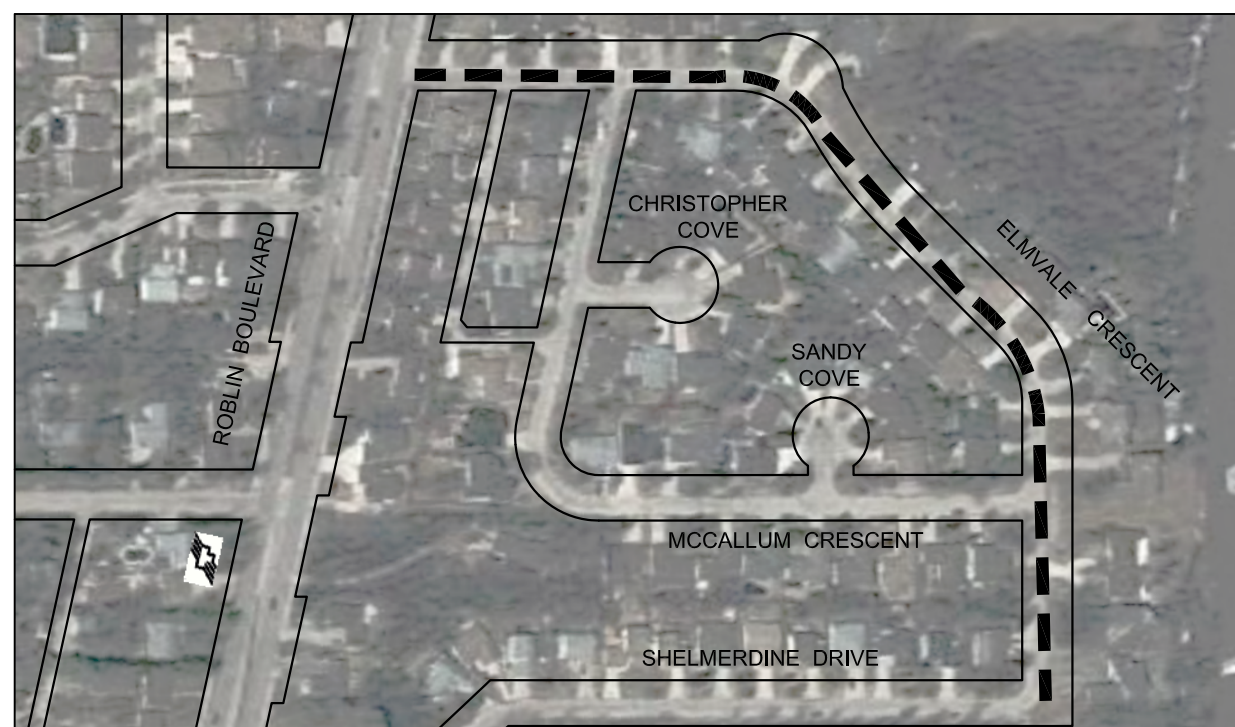
**EASTBOUND WELLINGTON CRESCENT -
WAVERLEY STREET / CAMBRIDGE STREET**



SHELMERDINE DRIVE - ROBLIN BOULEVARD / ELMVALE CRESCENT



WINDMILL WAY - ROBLIN BOULEVARD / DALE BOULEVARD






ELMVALE CRESCENT - ROBLIN BOULEVARD / SHELMERDINE DRIVE



METRIC
WHOLE NUMBERS INDICATE MILLIMETRES
DECIMALIZED NUMBERS INDICATE METRES

LEGEND

-  LIMIT OF CONSTRUCTION
-  BUS ROUTE
-  SCHOOL LOCATION

LOCATIONS APPROVED

UNDERGROUND STRUCTURES
SIGNED BY:

SUPV U/G STRUCTURES DATE

LOCATION OF UNDERGROUND STRUCTURES AS SHOWN ARE BASED ON THE BEST INFORMATION AVAILABLE BUT NO GUARANTEE IS GIVEN THAT ALL EXISTING UTILITIES ARE SHOWN OR THAT THE GIVEN LOCATIONS ARE EXACT CONFIRMATION OF EXISTENCE AND EXACT LOCATION OF ALL SERVICES MUST BE OBTAINED FROM THE INDIVIDUAL UTILITIES BEFORE PROCEEDING

G.B.M. - ELEV. -

NO.	REVISIONS	DATE	BY
1	ISSUED FOR CONSTRUCTION	13/07/08	VMM
2			
3			



DESIGNED BY: TR
DRAWN BY: TR
HOR. SCALE 1:3000
VERTICAL -
DATE: 13/07/08

MMM Group Limited
Suite 111 - 93 Lombard Ave,
Winnipeg, MB R3B 3B1
t. 204.943.3178
f. 204.943.4948
www.mmm.ca

CHECKED BY: JEC
APPROVED BY: VMM
RELEASED FOR CONSTRUCTION

ENGINEER'S SEAL



CONSULTANT ACAD DWG. NO.
331-2013.1-09

THE CITY OF WINNIPEG
PUBLIC WORKS DEPARTMENT
ENGINEERING DIVISION

2013 THIN BITUMINOUS OVERLAY (TBO) PROGRAM
EASTBOUND WELLINGTON CRESCENT, SHELMERDINE BOULEVARD, WINDMILL WAY, ELMVALE CRESCENT

CITY DRAWING NO.	
SHEET 4	OF 5
DRAWING NO.	REV.
09	0

NOTE: These design documents are prepared solely for the use by the party with whom the design professional has entered into a contract and there are no representations of any kind made by the design professional to any party with whom the design professional has not entered into a contract.