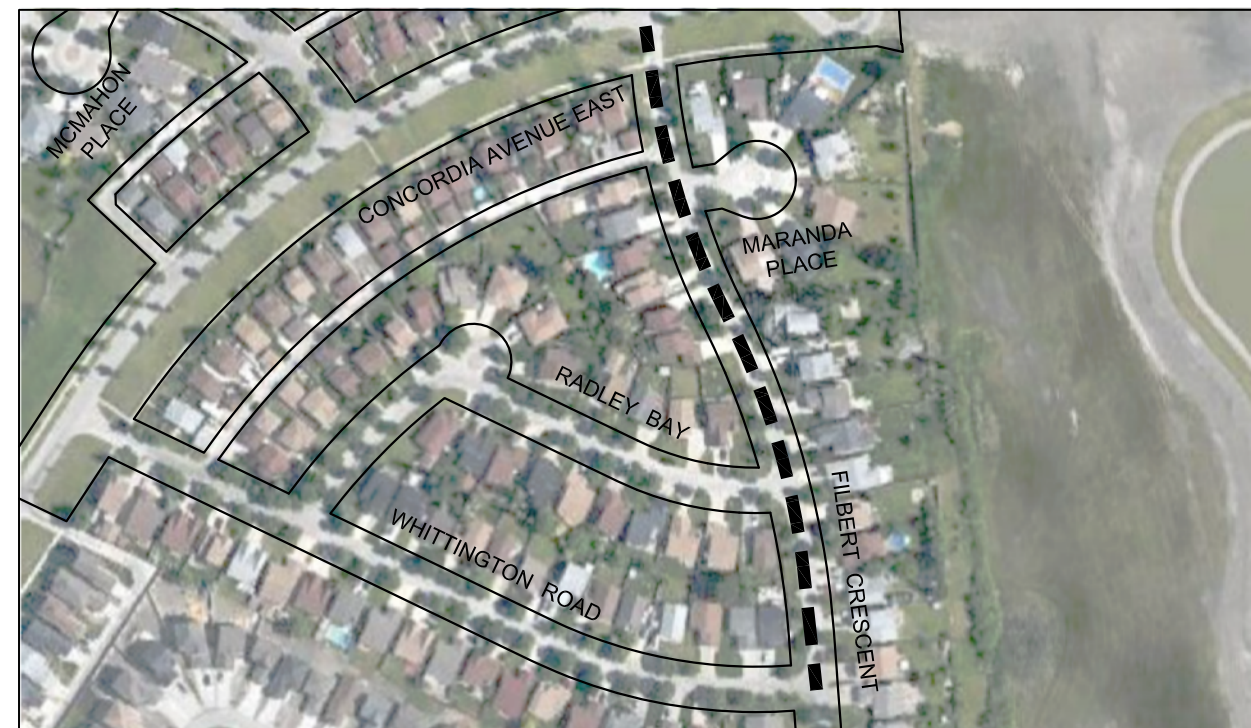


Jun 27, 2013 - 2:45pm
 P:\5513001-5513099\5513066 - 2013 Thin Bituminous Overlay Program\MMM Drawings\Contract 1\dwgs 331-2013.1-01 to 05 140613.dwg - tab:03



BLOSTEIN BAY - NORTH MEADOW DRIVE / NORTH MEADOW DRIVE



FILBERT CRESCENT - CONCORDIA AVENUE / PERFANIUK DRIVE



RADLEY BAY - WHITTINGTON ROAD / FILBERT CRESCENT



WHITTINGTON ROAD - CONCORDIA AVENUE / FILBERT CRESCENT



METRIC
 WHOLE NUMBERS INDICATE MILLIMETRES
 DECIMALIZED NUMBERS INDICATE METRES

LEGEND

- LIMIT OF CONSTRUCTION
- BUS ROUTE
- SCHOOL LOCATION

LOCATIONS APPROVED

UNDERGROUND STRUCTURES
 SIGNED BY: _____ DATE: _____

SUPV. U/G STRUCTURES DATE

LOCATION OF UNDERGROUND STRUCTURES AS SHOWN ARE BASED ON THE BEST INFORMATION AVAILABLE BUT NO GUARANTEE IS GIVEN THAT ALL EXISTING UTILITIES ARE SHOWN OR THAT THE GIVEN LOCATIONS ARE EXACT CONFIRMATION OF EXISTENCE AND EXACT LOCATION OF ALL SERVICES MUST BE OBTAINED FROM THE INDIVIDUAL UTILITIES BEFORE PROCEEDING

G.B.M. - ELEV. -

NO.	REVISIONS	DATE	BY
1	ISSUED FOR CONSTRUCTION	13/07/05	VMM
2			
3			

MMM GROUP

DESIGNED BY: TR
 CHECKED BY: JEC
 DRAWN BY: TR
 APPROVED BY: VMM

HOR. SCALE 1:3000
 VERTICAL -

RELEASED FOR CONSTRUCTION
 DATE: 13/07/05

ENGINEER'S SEAL

PROVINCE OF MANITOBA
 REGISTERED PROFESSIONAL ENGINEER
 V.M. MAROTI
 Member 30809

CONSULTANT ACAD DWG. NO.
 331-2013.1-03

THE CITY OF WINNIPEG
 PUBLIC WORKS DEPARTMENT
 ENGINEERING DIVISION

2013 THIN BITUMINOUS OVERLAY (TBO) PROGRAM

BLOSTEIN BAY, FILBERT CRESCENT, RADLEY BAY, WHITTINGTON ROAD

CITY DRAWING NO.
 SHEET 3 OF 5
 DRAWING NO. REV.
 03 0

NOTE: These design documents are prepared solely for the use by the party with whom the design professional has entered into a contract and there are no representations of any kind made by the design professional to any party with whom the design professional has not entered into a contract.