

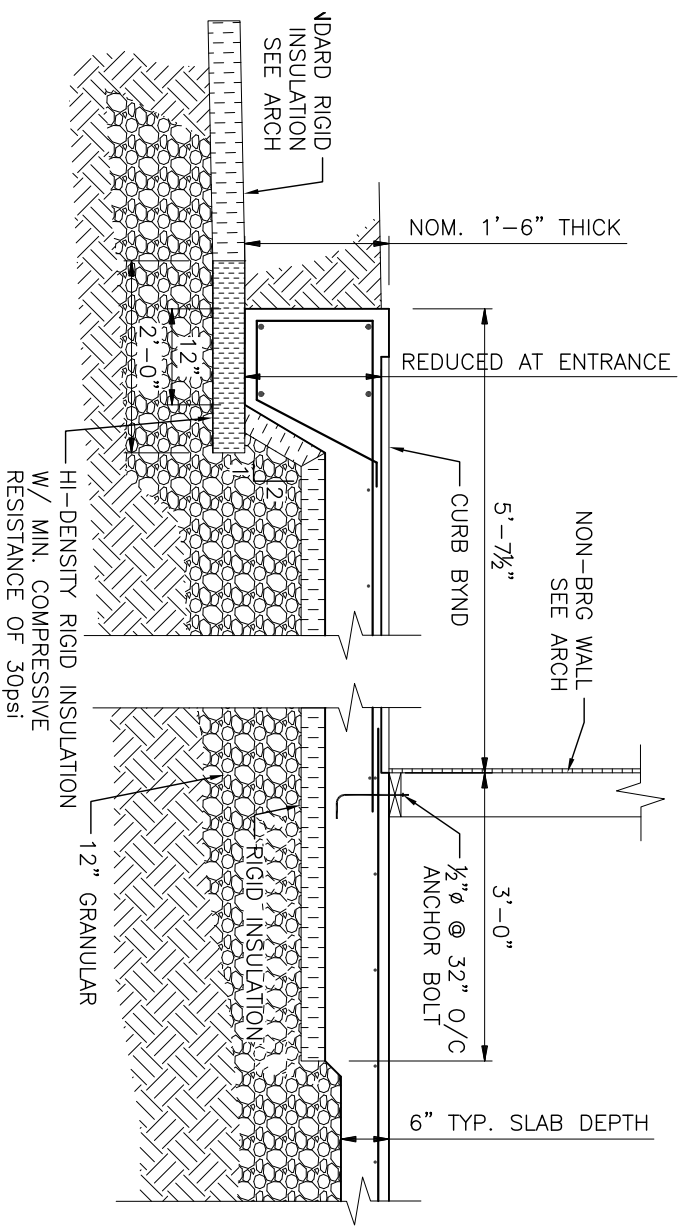
HI-DENSITY RIGID INSULATION  
W/ MIN. COMPRESSIVE  
RESISTANCE OF 30psi

RIGID INSULATION

7" CONCRETE SLAB ON  
12" COMPACTED GRANULAR  
R/W 10M @ 12" O/C EA. WAY TOP  
THICKEN SLAB 6" UNDER STUDWALL  
SEE DETAIL SECTION 1/S-1

6" CONCRETE SLAB ON  
12" COMPACTED GRANULAR  
R/W 10M @ 12" O/C EA. WAY TOP  
THICKEN SLAB 6" UNDER STUDWALL  
SEE DETAIL SECTION 1/S-1

1 SECTION  
S-1 1/2" = 1'-0"



## FOUNDATION & GROUND FLOOR PLAN

3/8" = 1'-0"

DESIGN LOADS:

LIVE LOAD: 50 PSF

**WOLFROM**

ENGINEERING LTD  
CONSULTING ENGINEERS  
345 WARDLAW AVENUE  
WINNIPEG, CANADA R3L 0L5  
(204)452-0041 FAX:284-8880  
E-Mail: info@wolfromeng.com

JOB TITLE

COMFORT STATION  
WINNIPEG TRANSIT

DRAWING TITLE		
<b>FOUNDATION PLAN &amp; SECTION</b>		
No.	REVISION	DATE
0	ISSUED FOR TENDER & CONSTRUCTION	2013.06.18
		DJP
		BY

DATE

18-JUNE-2013

SCALE

AS NOTED

FILE NO.

W13-126

DRAWING NO.

S-1

SEAL

