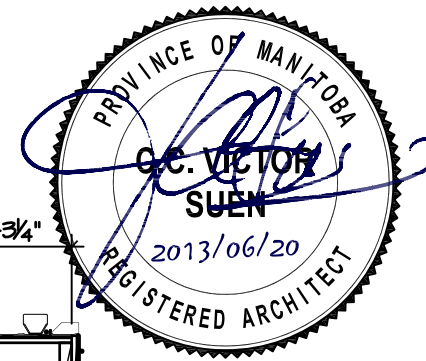
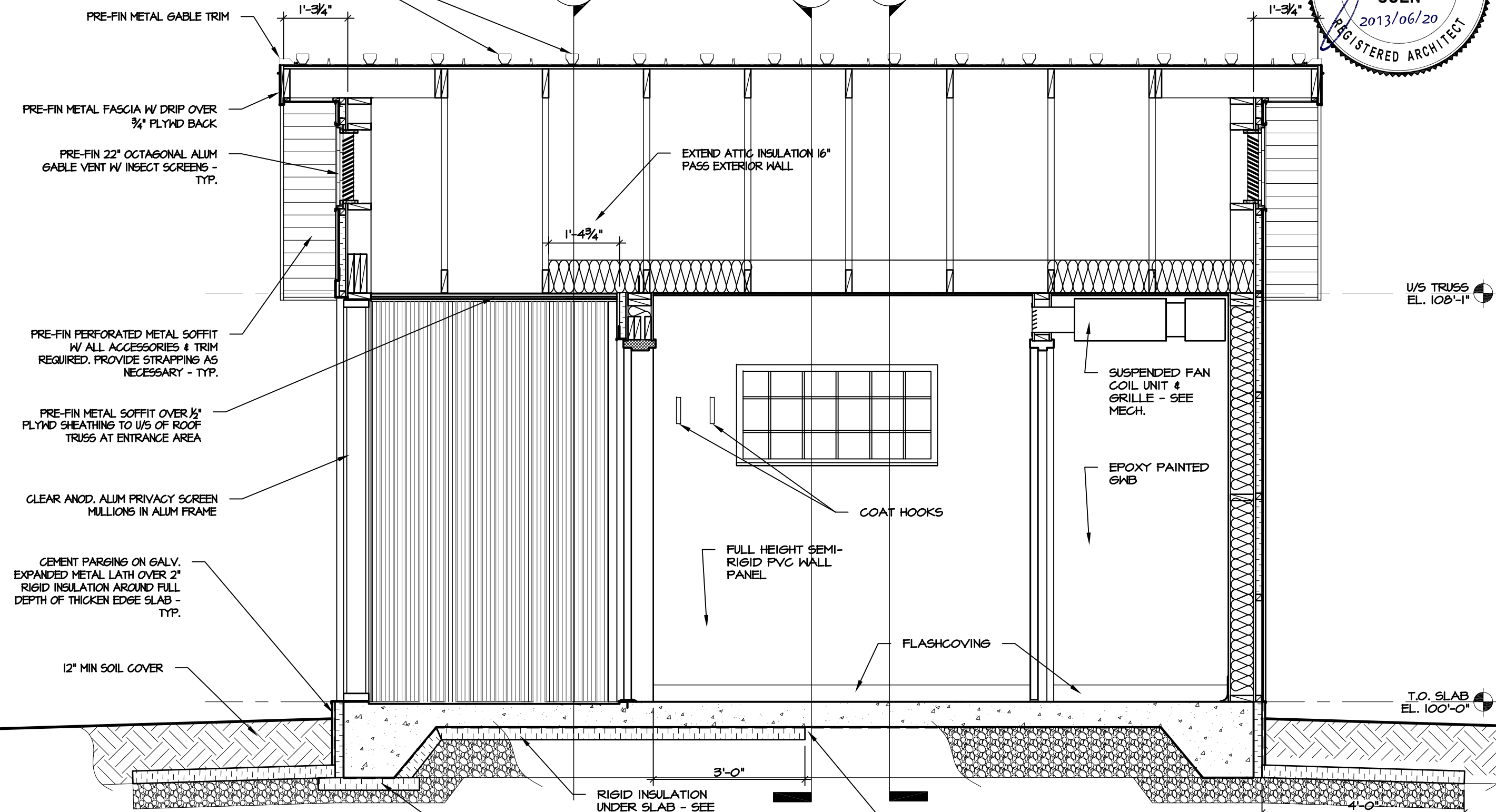


ADHESIVE MOUNT POLYCARBONATE SNOW GUARDS, 4 ROWS SPACED PER MANUFACTURER'S RECOMMENDATION. OFFSET 6" BETWEEN ALTERNATE VALLEYS - TYP.



**A-9**  
Rev. 0



**1**  
**A-9**

**BLDG SECTION 4-4**

SCALE 1/2" = 1'-0"

HIGH DENSITY RIGID INSULATION UNDER THICKEN EDGE - SEE STRUCT

SEE STRUCT FOR DROP OF BOTTOM OF SLAB TO ACCOUNT FOR DROP OF ENTRANCE SLAB

3" HORIZONTAL RIGID INSULATION EXTENSION AROUND CONCRETE SLAB (INSTALL IN TWO LAYERS W/ JOINTS STAGGERED) - TYPICAL SLOPE TO DRAIN

COMFORT STATION FOR WINNIPEG TRANSIT

BUILDING SECTION

REV. 0 13/06/20 ISSUED FOR TENDER & CONSTRUCTION

SCALE: 1/2" = 1'-0"  
DATE: 2013/06/20

Victor Suen Architect

23 Stormont Drive, Winnipeg, MB R3V 1L9  
email: victorsuenarchitect@mts.net  
Ph (204) 228-0230 Fax (204) 261-6341