

PRE-FIN METAL ROOF W/ CONCEALED FASTENER, VICWEST - "PRESTIGE" OR EQUAL OVER BITUTHENE MEMBRANE ON 1/2" EXT PLY W/ H-CLIPS

PRE-FIN METAL RIDGE CAP

FOAM & PRE-FIN METAL CLOSURE STRIP - TYP

ADHESIVE MOUNT POLYCARBONATE SNOW GUARDS, SPACED PER MANUFACTURER'S RECOMMENDATION. OFFSET 6" BETWEEN ALTERNATE VALLEYS - TYP.

6" TYP.

6" OFFSET BETWEEN ADJACENT VALLEYS - TYP

FOAM CLOSURE STRIP

PRE-FIN METAL EAVESTROUGH CLIPS @ 24" O.C.

4"

1/4"

1/4"

PRE-FIN METAL EAVESTROUGH

PRE-FIN METAL FASCIA C/M DRIP, OVER 3/4" EXT. PLYWD FASCIA BOARD

PRE-FIN METAL J-TRIM

PRE-FIN PERFORATED METAL SOFFIT W/ STRAPPING - VICWEST CL1015R

PRE-FIN METAL CLADDING - VICWEST DIAMOND RIB
PRE-FIN METAL J TRIM

4" WIDE PRE-FIN METAL TRIM

4"

PRE-FIN METAL J TRIM

1 RIDGE CAP DETAIL

A-15 SCALE 3" = 1'-0"

2 EAVESTROUGH / FASCIA DETAIL

A-14 SCALE 3" = 1'-0"

PRE-FIN METAL ROOF W/ CONCEALED FASTENER, VICWEST - "PRESTIGE" OR EQUAL OVER BITUTHENE MEMBRANE ON 1/2" EXT PLY W/ H-CLIPS

PRE-FIN METAL GABLE TRIM W/ DRIP

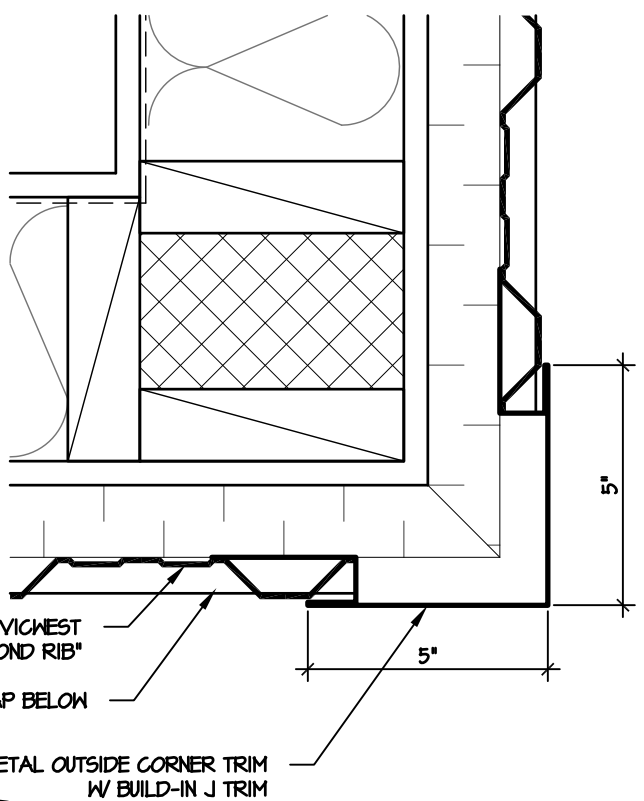
4"

4"

PRE-FIN METAL FASCIA C/M DRIP, OVER 3/4" EXT. PLYWD FASCIA BOARD

PRE-FIN PERFORATED METAL SOFFIT W/ STRAPPING - VICWEST CL1015R

PRE-FIN METAL J-TRIM



PRE-FIN METAL CLADDING - VICWEST "DIAMOND RIB"
DRIP CAP BELOW

PRE-FIN METAL OUTSIDE CORNER TRIM W/ BUILD-IN J TRIM

5"

5"

5 OUTSIDE CORNER TRIM

A-15 SCALE 3" = 1'-0"

4 GABLE TRIM & FASCIA @ LOOKOUT

A-15 SCALE 3" = 1'-0"

