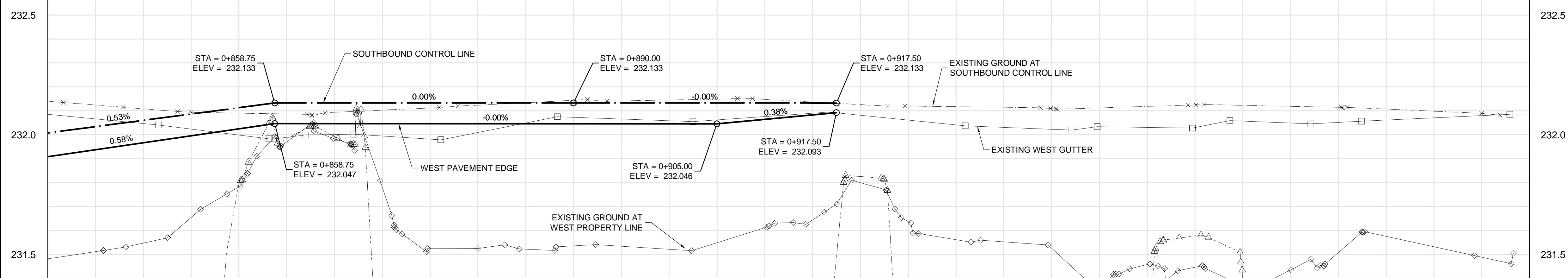
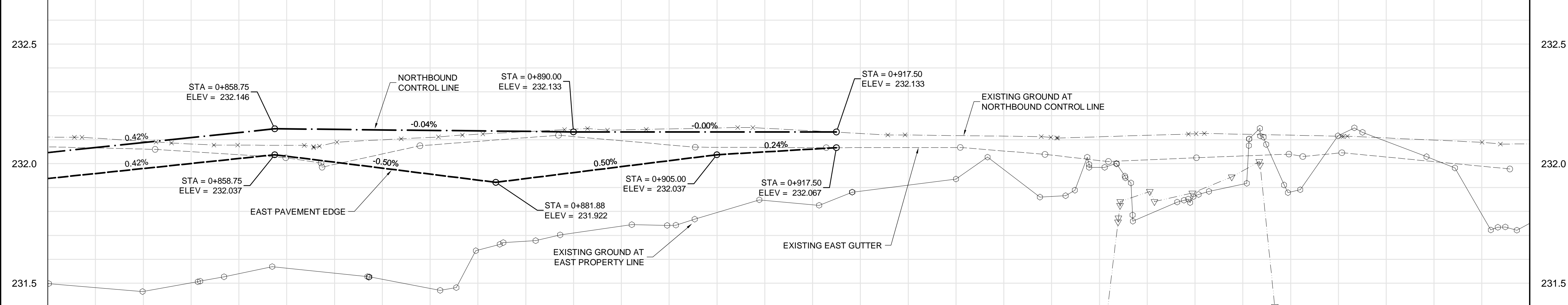


**SOUTHBOUND**



**NORTHBOUND**



- CONSTRUCTION NOTES:**
- ALL DIMENSIONS ARE TO BACK OF CURB.
  - ISOLATE MISCELLANEOUS ITEMS IN NEW CONCRETE WORKS AS PER SD-228C.
  - LEGAL PLAN AND UNDERGROUND INFORMATION FROM CITY OF WINNIPEG LBIS.
  - CONTRACTOR TO TAKE PRECAUTIONARY STEPS TO AVOID DAMAGE FROM CONSTRUCTION ACTIVITIES TO TREES WITHIN THE LIMITS OF CONSTRUCTION.
  - LOCATION OF EXISTING SERVICES TO BE CONFIRMED IN THE FIELD BY THE CONTRACTOR.
  - CB LEADS TO BE INSTALLED AT MIN. 1.0% SLOPE OR AS DIRECTED BY CONTRACT ADMINISTRATOR.
  - ADJUST EXISTING CATCH BASINS AND MANHOLES AND ISOLATE AS PER SD-220A.
  - PROTECT EXISTING LEGAL PINS IN NEW PAVEMENT UTILIZING A WATER VALVE INSERT. GRIND OFF SYMBOL ON COVER.
  - SEE P-3350-27 THROUGH 31 FOR TYPICAL CROSS-SECTIONS.
  - CONTRACTOR SHALL INSTALL MODIFIED BARRIER CURB (SD-203B) ON ALL PRIVATE APPROACH AND PUBLIC APPROACH RADII AS IDENTIFIED BY THE CONTRACT ADMINISTRATOR.
  - CONTRACTOR SHALL CONSTRUCT BARRIER CURB INTEGRAL WITH CONCRETE SLAB (SD-204) AND SEPARATE CONCRETE SPLASH STRIP (SD-223B) ON ALL SECTIONS OF ROADWAY WHERE THE CURB IS PARALLEL TO THE ROADWAY BASELINE GEOMETRY.
  - CONCRETE PAVEMENT IN MINOR STREET APPROACHES, PRIVATE APPROACHES AND MEDIAN OPENINGS SHALL BE HAND PLACED WITH INTEGRAL CURB CONSTRUCTION (SD-203A OR SD-203B AS SPECIFIED). MAIN LINE CONCRETE PAVEMENT SHALL BE SLIP FORMED UNLESS OTHERWISE REQUIRED DUE TO TRAFFIC STAGING RESTRICTIONS.
  - INSTALL 150 mm SUB DRAIN IN BOTH DIRECTIONS OF CATCH BASINS ALONG PAVEMENT EDGE AS PER SD-245 AND CAP ENDS.

**METRIC**

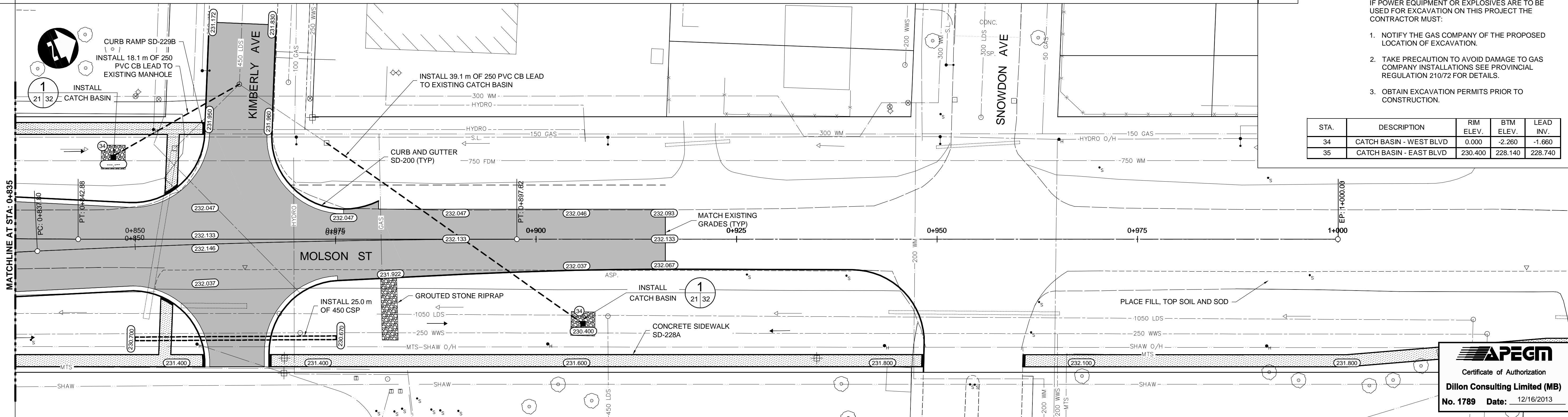
WHOLE NUMBERS INDICATE MILLIMETRES  
DECIMALIZED NUMBERS INDICATE METRES

**WARNING**

IF POWER EQUIPMENT OR EXPLOSIVES ARE TO BE USED FOR EXCAVATION ON THIS PROJECT THE CONTRACTOR MUST:

- NOTIFY THE GAS COMPANY OF THE PROPOSED LOCATION OF EXCAVATION.
- TAKE PRECAUTION TO AVOID DAMAGE TO GAS COMPANY INSTALLATIONS SEE PROVINCIAL REGULATION 210/72 FOR DETAILS.
- OBTAIN EXCAVATION PERMITS PRIOR TO CONSTRUCTION.

STA.	DESCRIPTION	RIM ELEV.	BTM ELEV.	LEAD INV.
34	CATCH BASIN - WEST BLVD	0.000	-2.260	-1.660
35	CATCH BASIN - EAST BLVD	230.400	228.140	228.740



G:\CAD\127055\02-Civil\01-Contract\03-Plan-Profile-Panet.dwg

EXISTING	LEGEND-PLAN	PROPOSED	EXISTING	LEGEND-PLAN	PROPOSED	EXISTING	LEGEND-PROFILE	PROPOSED
150 WM	WATERMAIN	150 WM	HYDRO	HYDRO	150 WM	WATERMAIN	150 WM	
300 LDS	LAND DRAINAGE SEWER	300 LDS	MTS	M.T.S.	300 LDS	HYDRANT VALVE	300 LDS	
250 WWS	WASTE WATER SEWER	250 WWS		CONCRETE	250 WWS	WASTE WATER SEWER	250 WWS	
	MANHOLE			ASPHALT		LAND DRAINAGE SEWER		
	CATCH BASIN			PLANING		WASTE WATER SEWER		
	CURB INLET			SIDEWALK		PROFILE		
	JUNCTIONS			PAVING STONES		NORTH/WEST GUTTER		
	CULVERT			PARTIAL DEPTH REPAIR		SOUTH/EAST GUTTER		
100 GAS	GAS	100 GAS		PROPERTY LINE		NORTH/WEST DITCH		
				DRAINAGE ARROW		SOUTH/EAST DITCH		
				CURB RAMP				

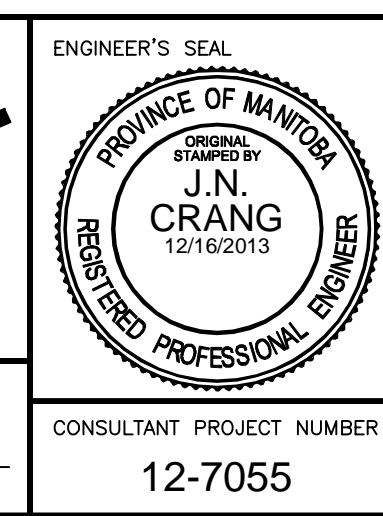
**UNDERGROUND STRUCTURES**

SUPPLY	U/G STRUCTURES	DATE

LOCATION OF UNDERGROUND STRUCTURES AS SHOWN ARE BASED ON THE BEST INFORMATION AVAILABLE, BUT NO GUARANTEE IS GIVEN THAT ALL EXISTING UTILITIES ARE SHOWN OR THAT THE GIVEN LOCATIONS ARE EXACT. CONFIRMATION OF EXISTENCE AND EXACT LOCATION OF ALL SERVICES MUST BE OBTAINED FROM THE INDIVIDUAL UTILITIES BEFORE PROCEEDING WITH CONSTRUCTION.

NO.	REVISIONS	DATE	BY
3	ISSUED FOR TENDER	12/16/13	JNC
2	ISSUED FOR REVIEW	07/22/13	JNC
1	ISSUED FOR REVIEW	06/21/13	JNC

DESIGNED BY	JMS/MRD
DRAWN BY	TJH
CHECKED BY	JNC
APPROVED BY	DPK



**THE CITY OF WINNIPEG**  
PUBLIC WORKS DEPARTMENT

**Winnipeg**

PANET ROAD/MOLSON STREET  
RECONSTRUCTION AND TWINNING

PLAN-PROFILE - PANET-MOLSON - STA. 0+835 TO 0+920

CITY DRAWING NUMBER: P-3350-22  
SHEET 22 OF 45  
CONSULTANT DRAWING NUMBER

RELEASED FOR CONSTRUCTION DATE

CONSULTANT PROJECT NUMBER: 12-7055

Certificate of Authorization  
Dillon Consulting Limited (MB)  
No. 1789 Date: 12/16/2013