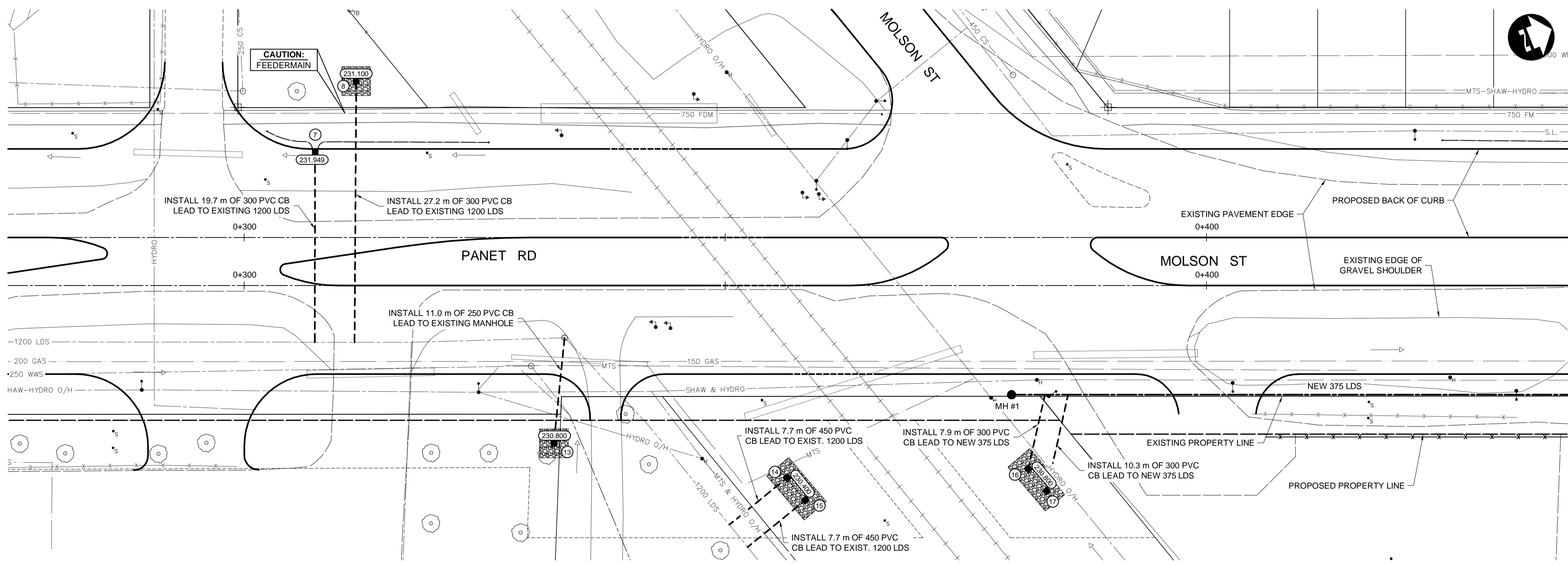


- CONSTRUCTION NOTES:**
1. ALL PVC PIPE SHALL HAVE CLASS B-TYPE 3 BEDDING AND ALL CONCRETE PIPE SHALL HAVE CLASS B-SAND BEDDING.
  2. ALL BACKFILL TO BE CLASS 3.
  3. CB LEADS TO BE INSTALLED AT MIN. 1.0% SLOPE OR AS DIRECTED BY CONTRACT ADMINISTRATOR.
  4. PIPE INSTALLED IN C.P.R. R.O.W. TO BE INSTALLED USING PIPE JACKING METHOD. NO EXCAVATIONS ARE PERMITTED WITHIN THE C.P.R. R.O.W.
  5. PIPE CROSSING IN C.P.R. R.O.W. TO BE CONSTRUCTED, MAINTAINED, AND OPERATED IN ACCORDANCE WITH TCE-10 STANDARDS.
  6. INSTALL 150 mm SUB DRAIN IN BOTH DIRECTIONS OF CATCH BASINS ALONG PAVEMENT EDGE AS PER SD-245 AND CAP ENDS.



**NOTE:**  
SIGNIFICANT CHANGES TO THE LDS DESIGN WERE MADE FOR ADDENDUM NO. 3 PLEASE REVIEW ALL ASPECTS OF PLAN/PROFILES

**METRIC**

WHOLE NUMBERS INDICATE MILLIMETRES  
DECIMALIZED NUMBERS INDICATE METRES

**WARNING**

IF POWER EQUIPMENT OR EXPLOSIVES ARE TO BE USED FOR EXCAVATION ON THIS PROJECT THE CONTRACTOR MUST:

1. NOTIFY THE GAS COMPANY OF THE PROPOSED LOCATION OF EXCAVATION.
2. TAKE PRECAUTION TO AVOID DAMAGE TO GAS COMPANY INSTALLATIONS SEE PROVINCIAL REGULATION 210/72 FOR DETAILS.
3. OBTAIN EXCAVATION PERMITS PRIOR TO CONSTRUCTION.



G:\CAD\127055\02-Civil\01-Contract\10-Plan-Profile-LDS.dwg

150 WM	WATERMAIN	150 WM	HYDRO	HYDRO	HYDRO	150 WM	WATERMAIN	150 WM
Hydrant	HYDRANT	Hydrant	MTS	MTS	MTS	Hydrant	HYDRANT	Hydrant
Valve	VALVE	Valve	MTS	MTS	MTS	Valve	VALVE	Valve
300 LDS	LAND DRAINAGE SEWER	300 LDS	300 LDS	300 LDS	300 LDS	300 LDS	LAND DRAINAGE SEWER	300 LDS
250 WWS	WASTE WATER SEWER	250 WWS	250 WWS	250 WWS	250 WWS	250 WWS	WASTE WATER SEWER	250 WWS
Manhole	MANHOLE	Manhole	Manhole	Manhole	Manhole	Manhole	MANHOLE	Manhole
Catch Basin	CATCH BASIN	Catch Basin	Planing	Planing	Planing	Catch Basin	CATCH BASIN	Catch Basin
Curb Inlet	CURB INLET	Curb Inlet	Sidewalk	Sidewalk	Sidewalk	Curb Inlet	CURB INLET	Curb Inlet
Junctions	JUNCTIONS	Junctions	Paving Stones	Paving Stones	Paving Stones	Junctions	JUNCTIONS	Junctions
Culvert	CULVERT	Culvert	Partial Depth Repair	Partial Depth Repair	Partial Depth Repair	Culvert	CULVERT	Culvert
100 GAS	GAS	100 GAS	Property Line	Property Line	Property Line	100 GAS	GAS	100 GAS
Existing	LEGEND-PLAN	Proposed	Existing	LEGEND-PLAN	Proposed	Existing	LEGEND-PROFILE	Proposed

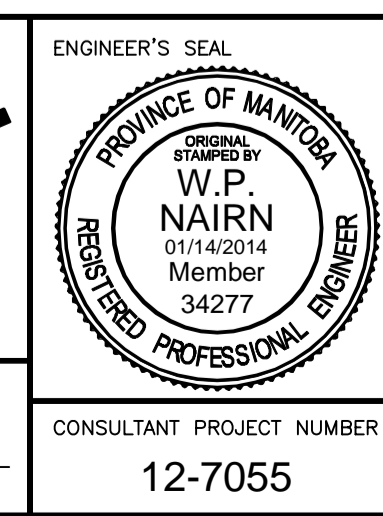
**UNDERGROUND STRUCTURES**

SUPV. U/G STRUCTURES	DATE

LOCATION OF UNDERGROUND STRUCTURES AS SHOWN ARE BASED ON THE BEST INFORMATION AVAILABLE, BUT NO GUARANTEE IS GIVEN THAT ALL EXISTING UTILITIES ARE SHOWN OR THAT THE GIVEN LOCATIONS ARE EXACT. CONFIRMATION OF EXISTENCE AND EXACT LOCATION OF ALL SERVICES MUST BE OBTAINED FROM THE INDIVIDUAL UTILITIES BEFORE PROCEEDING WITH CONSTRUCTION.

B.M. ELEV.			
NO.	REVISIONS	DATE	BY
4	ISSUED FOR ADDENDUM NO. 3	01/14/14	JNC
3	ISSUED FOR TENDER	12/16/13	JNC
2	ISSUED FOR REVIEW	07/22/13	JNC
1	ISSUED FOR REVIEW	06/21/13	JNC

DESIGNED BY	WPN
DRAWN BY	TJH
CHECKED BY	JNC
APPROVED BY	DPK
HOR. SCALE	1:250
VERTICAL	1:50
DATE	01/14/2014



**THE CITY OF WINNIPEG PUBLIC WORKS DEPARTMENT**

PANET ROAD/MOLSON STREET RECONSTRUCTION AND TWINNING

LDS - PANET-MOLSON (1 OF 3)

CITY DRAWING NUMBER: P-3350-34  
SHEET 34 OF 47  
CONSULTANT DRAWING NUMBER