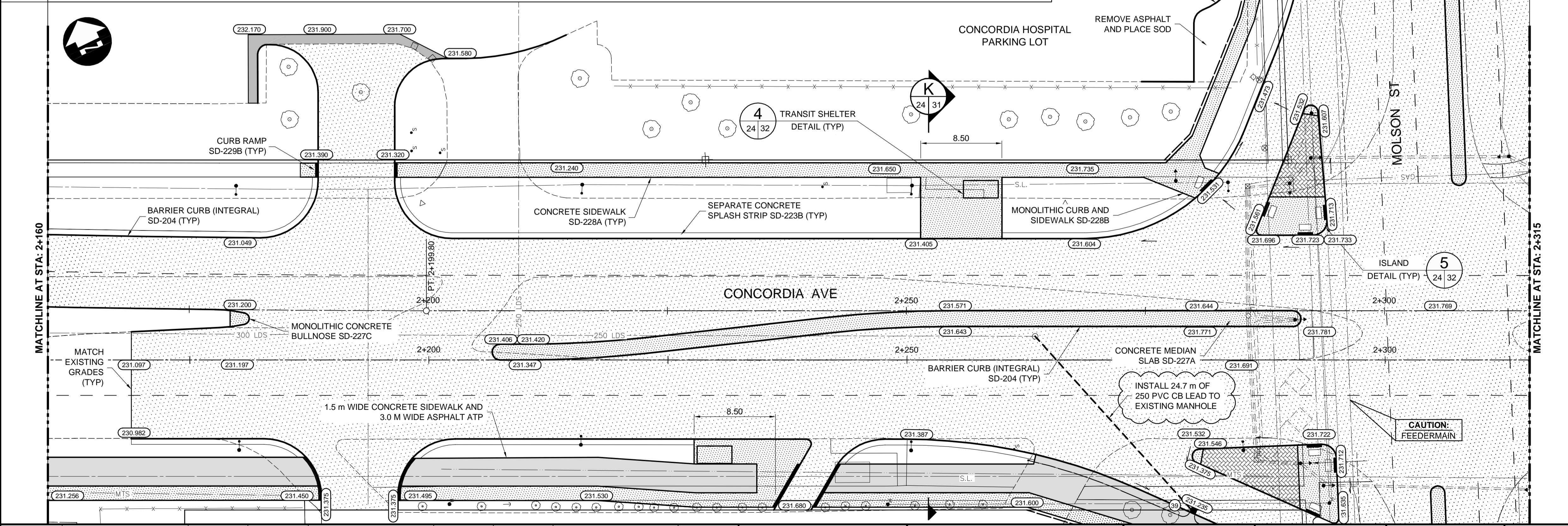


- CONSTRUCTION NOTES:**
- ALL DIMENSIONS ARE TO BACK OF CURB.
  - ISOLATE MISCELLANEOUS ITEMS IN NEW CONCRETE WORKS AS PER SD-228C.
  - LEGAL PLAN AND UNDERGROUND INFORMATION FROM CITY OF WINNIPEG LBIS.
  - CONTRACTOR TO TAKE PRECAUTIONARY STEPS TO AVOID DAMAGE FROM CONSTRUCTION ACTIVITIES TO TREES WITHIN THE LIMITS OF CONSTRUCTION.
  - LOCATION OF EXISTING SERVICES TO BE CONFIRMED IN THE FIELD BY THE CONTRACTOR.
  - CB LEADS TO BE INSTALLED AT MIN. 1.0% SLOPE OR AS DIRECTED BY CONTRACT ADMINISTRATOR.
  - ADJUST EXISTING CATCH BASINS AND MANHOLES AND ISOLATE AS PER SD-220A.
  - PROTECT EXISTING LEGAL PINS IN NEW PAVEMENT UTILIZING A WATER VALVE INSERT. GRIND OFF SYMBOL ON COVER.
  - SEE P-3350-27 THROUGH 31 FOR TYPICAL CROSS-SECTIONS.
  - CONTRACTOR SHALL INSTALL MODIFIED BARRIER CURB (SD-203B) ON ALL PRIVATE APPROACH AND PUBLIC APPROACH RADI AS IDENTIFIED BY THE CONTRACT ADMINISTRATOR.
  - CONTRACTOR SHALL CONSTRUCT BARRIER CURB INTEGRAL WITH CONCRETE SLAB (SD-204) AND SEPARATE CONCRETE SPLASH STRIP (SD-223B) ON ALL SECTIONS OF ROADWAY WHERE THE CURB IS PARALLEL TO THE ROADWAY BASELINE GEOMETRY.
  - CONCRETE PAVEMENT IN MINOR STREET APPROACHES, PRIVATE APPROACHES AND MEDIAN OPENINGS SHALL BE HAND PLACED WITH INTEGRAL CURB CONSTRUCTION (SD-203A OR SD-203B AS SPECIFIED). MAIN LINE CONCRETE PAVEMENT SHALL BE SLIP FORMED UNLESS OTHERWISE REQUIRED DUE TO TRAFFIC STAGING RESTRICTIONS.
  - INSTALL 150 mm SUB DRAIN IN BOTH DIRECTIONS OF CATCH BASINS ALONG PAVEMENT EDGE AS PER SD-245 AND CAP ENDS.

**METRIC**  
 WHOLE NUMBERS INDICATE MILLIMETRES  
 DECIMALIZED NUMBERS INDICATE METRES

**WARNING**

- IF POWER EQUIPMENT OR EXPLOSIVES ARE TO BE USED FOR EXCAVATION ON THIS PROJECT THE CONTRACTOR MUST:
- NOTIFY THE GAS COMPANY OF THE PROPOSED LOCATION OF EXCAVATION.
  - TAKE PRECAUTION TO AVOID DAMAGE TO GAS COMPANY INSTALLATIONS SEE PROVINCIAL REGULATION 210/72 FOR DETAILS.
  - OBTAIN EXCAVATION PERMITS PRIOR TO CONSTRUCTION.



EXISTING	LEGEND-PLAN	PROPOSED	EXISTING	LEGEND-PLAN	PROPOSED	EXISTING	LEGEND-PROFILE	PROPOSED
150 WM	WATERMAIN	150 WM	HYDRO	HYDRO	150 WM	WATERMAIN	150 WM	
300 LDS	HYDRANT VALVE	300 LDS	MTS	MTS	300 LDS	HYDRANT VALVE	300 LDS	
250 WWS	LAND DRAINAGE SEWER WASTE WATER SEWER	250 WWS			250 WWS	LAND DRAINAGE SEWER WASTE WATER SEWER	250 WWS	
	MANHOLE					MANHOLE		
	CATCH BASIN CURB INLET					CATCH BASIN CURB INLET		
	JUNCTIONS					JUNCTIONS		
	CULVERT					CULVERT		
100 GAS	GAS	100 GAS				GAS		

**UNDERGROUND STRUCTURES**

SUPPLY, U/G STRUCTURES DATE

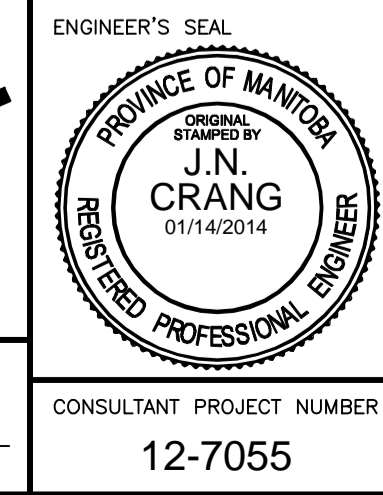
LOCATION OF UNDERGROUND STRUCTURES AS SHOWN ARE BASED ON THE BEST INFORMATION AVAILABLE, BUT NO GUARANTEE IS GIVEN THAT ALL EXISTING UTILITIES ARE SHOWN OR THAT THE GIVEN LOCATIONS ARE EXACT. CONFIRMATION OF EXISTENCE AND EXACT LOCATION OF ALL SERVICES MUST BE OBTAINED FROM THE INDIVIDUAL UTILITIES BEFORE PROCEEDING WITH CONSTRUCTION.

NO.	REVISIONS	DATE	BY
4	ISSUED FOR ADDENDUM NO. 3	01/14/14	JNC
3	ISSUED FOR TENDER	12/16/13	JNC
2	ISSUED FOR REVIEW	07/22/13	JNC
1	ISSUED FOR REVIEW	06/21/13	JNC

DESIGNED BY: JMS/MRD  
 DRAWN BY: TJH  
 CHECKED BY: JNC  
 APPROVED BY: DPK

HOR. SCALE: 1:250  
 VERTICAL: 1:10

DATE: 01/14/2014



**THE CITY OF WINNIPEG**  
 PUBLIC WORKS DEPARTMENT

Winnipeg

PANET ROAD/MOLSON STREET RECONSTRUCTION AND TWINNING

CITY DRAWING NUMBER: P-3350-24  
 SHEET: 24 OF 47  
 CONSULTANT DRAWING NUMBER: PLAN-PROFILE - CONCORDIA - STA. 2+160 TO 2+315

CONSULTANT PROJECT NUMBER: 12-7055

G:\CAD\127055\02-Civil\01-Plan-Profile-Concordia.dwg