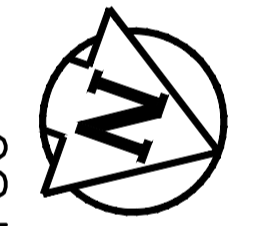
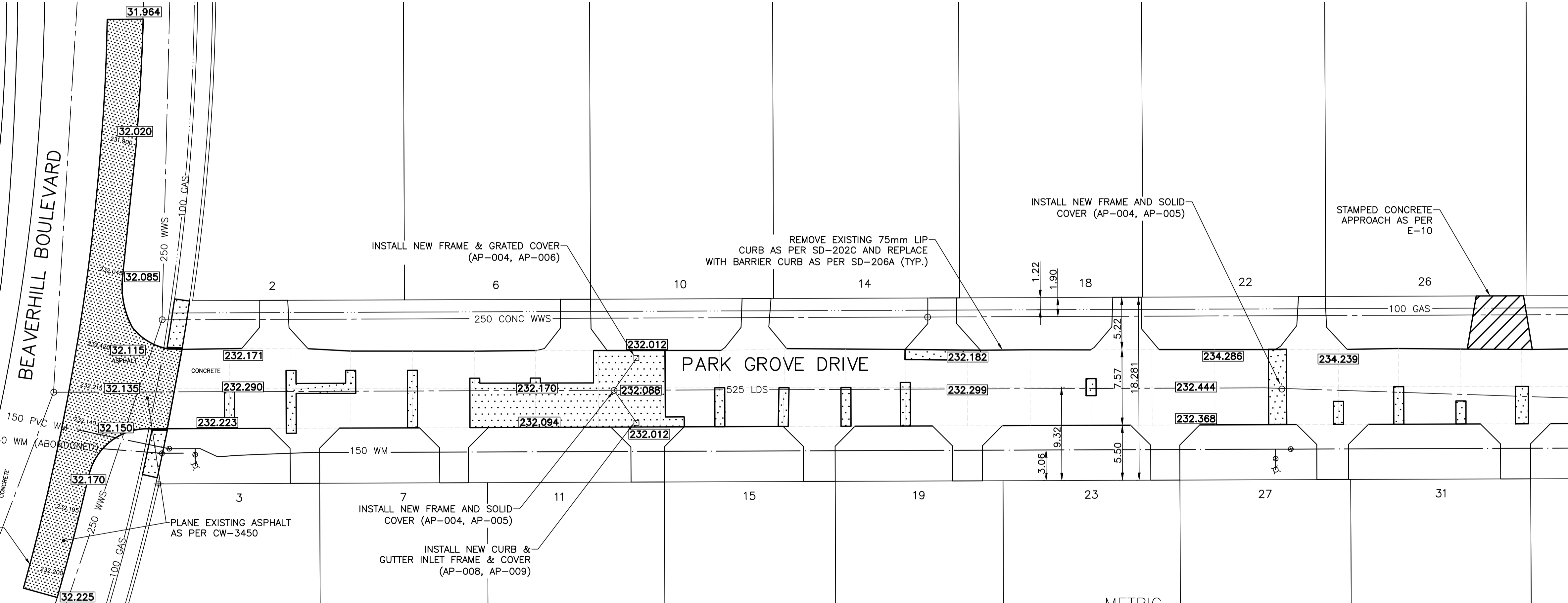
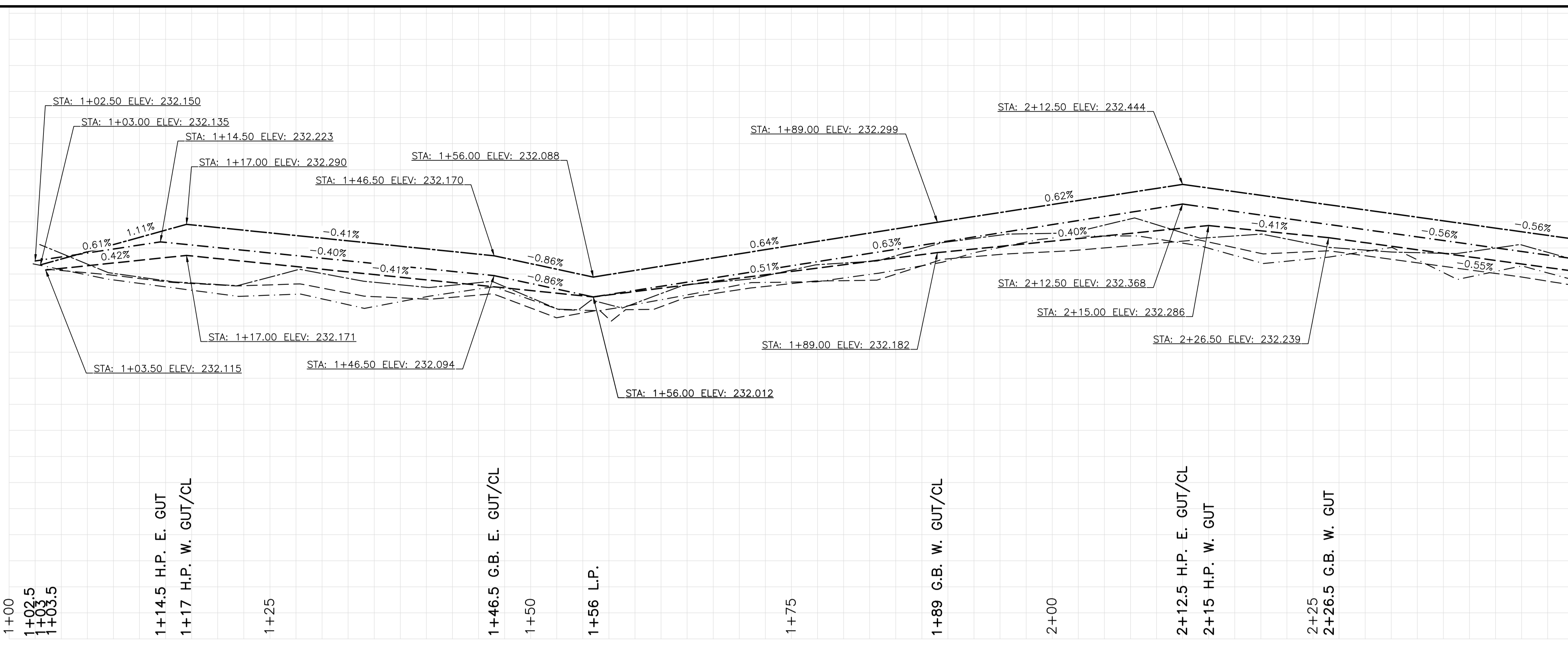


233.10
233.00
232.90
232.80
232.70
232.60
232.50
232.40
232.30
232.20
232.10
232.00
231.90
231.80
231.70
231.60
231.50
231.40
231.30
231.20
231.10
231.00
230.90
230.80
230.70

233.10
233.00
232.90
232.80
232.70
232.60
232.50
232.40
232.30
232.20
232.10
232.00
231.90
231.80
231.70
231.60
231.50
231.40
231.30
231.20
231.10
231.00
230.90
230.80
230.70



MATCHLINE STA 2+50

- CONSTRUCTION NOTES**
- 1) CURB REPLACEMENT AS DIRECTED BY THE CONTRACT ADMINISTRATOR.
 - 2) ALL STREET RADIUS CURB UNDER 15M RADIUS SHALL BE REPLACED AS MODIFIED OR AS DIRECTED BY THE CONTRACT ADMINISTRATOR.
 - 3) PAVEMENT REPAIRS SHOWN ARE ONLY A REPRESENTATIVE SAMPLE OF THE TENDERED QUANTITIES
 - 4) ASPHALT TIE-INS ON APPROACHES TO BE DETERMINED IN THE FIELD BY THE CONTRACT ADMINISTRATOR.
 - 5) ALL BULLNOSES TO HAVE SLOPED FACE.

WARNING

IF POWER EQUIPMENT OR EXPLOSIVES ARE TO BE USED FOR EXCAVATION ON THIS PROJECT THE CONTRACTOR MUST:

- 1) OBTAIN CLEARANCE FROM THE GAS UTILITY PRIOR TO EXCAVATION.
- 2) TAKE PRECAUTION TO AVOID DAMAGE TO GAS UTILITY INSTALLATIONS.

SEE PROVINCIAL REGULATION 210/72 FOR DETAILS

BID OPPORTUNITY NO. 527-2013

EXISTING	LEGEND - PLAN	PROPOSED	EXISTING	LEGEND - PLAN	PROPOSED	EXISTING	LEGEND - PROFILE	PROPOSED
⊕	HYDRANT	⊕	---	LDS/WWS	---	---	WEST GUTTER	---
⊙	VALVE	⊙	---	WATERMAIN	---	---	CENTER LINE	---
⊘	CURB STOP	⊘	---	GAS	---	---	EAST GUTTER	---
▣	CONCRETE	▣	---	TRAFFIC SIGNALS	---			
○	O.L.S.	●	---	ASPHALT	---			
○	MANHOLE	●	---	CURB RENEWAL	---			
□	CATCH BASIN	■	231.000	ELEVATIONS	[231.000]			
△	CURB INLET	▲	---	PROPERTY LINE	---			
☆	HYDRO POLE	⊕	---	SURVEY BAR	---			
⊕	TRAFFIC SIGNAL POLE	⊕	---	GEODETIC BENCH MARK	---			
			---	RAMP CURB	---			

LOCATION APPROVED UNDERGROUND STRUCTURES

DATE: _____

NOTE: LOCATION OF UNDERGROUND STRUCTURES AS SHOWN ARE BASED ON THE BEST INFORMATION AVAILABLE. BUT NO GUARANTEE IS GIVEN THAT ALL EXISTING UTILITIES ARE SHOWN OR THAT THE GIVEN LOCATIONS ARE EXACT. CONFIRMATION OF EXISTENCE AND EXACT LOCATION OF ALL SERVICES MUST BE OBTAINED FROM THE INDIVIDUAL UTILITIES BEFORE PROCEEDING WITH CONSTRUCTION.

B.M. 10 @ N.E. CORNER BEAVERHILL BOULEVARD AND PARK GROVE DRIVE ELEV. 232.437

NO.	REVISIONS	DATE	BY

**ENGINEERING DIVISION
TECHNOLOGY SERVICES BRANCH
106 - 1155 PACIFIC AVE**

DESIGNED BY: R.M. CHECKED BY: R.K.D.
DRAWN BY: R.M. APPROVED BY: R.T.C.

HOR. SCALE: 1 : 250
VERTICAL: 1 : 10

DATE: 2013/07/23

ENGINEER'S SEAL

R.T. CUNNINGHAM
Member
24711
REGISTERED PROFESSIONAL ENGINEER

ORIGINAL SIGNED BY
R.T.C. JULY 25/2013

THE CITY OF WINNIPEG
PUBLIC WORKS DEPARTMENT

PARK GROVE DRIVE
FROM BEAVERHILL BOULEVARD TO CHATSWORTH PLACE
PAVEMENT REHABILITATION AND ASSOCIATED WORKS
FROM STA. 1+00 TO STA. 2+50

CITY DRAWING NUMBER SE-13-42
SHEET 1 OF 4

1