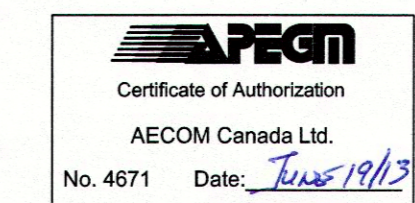
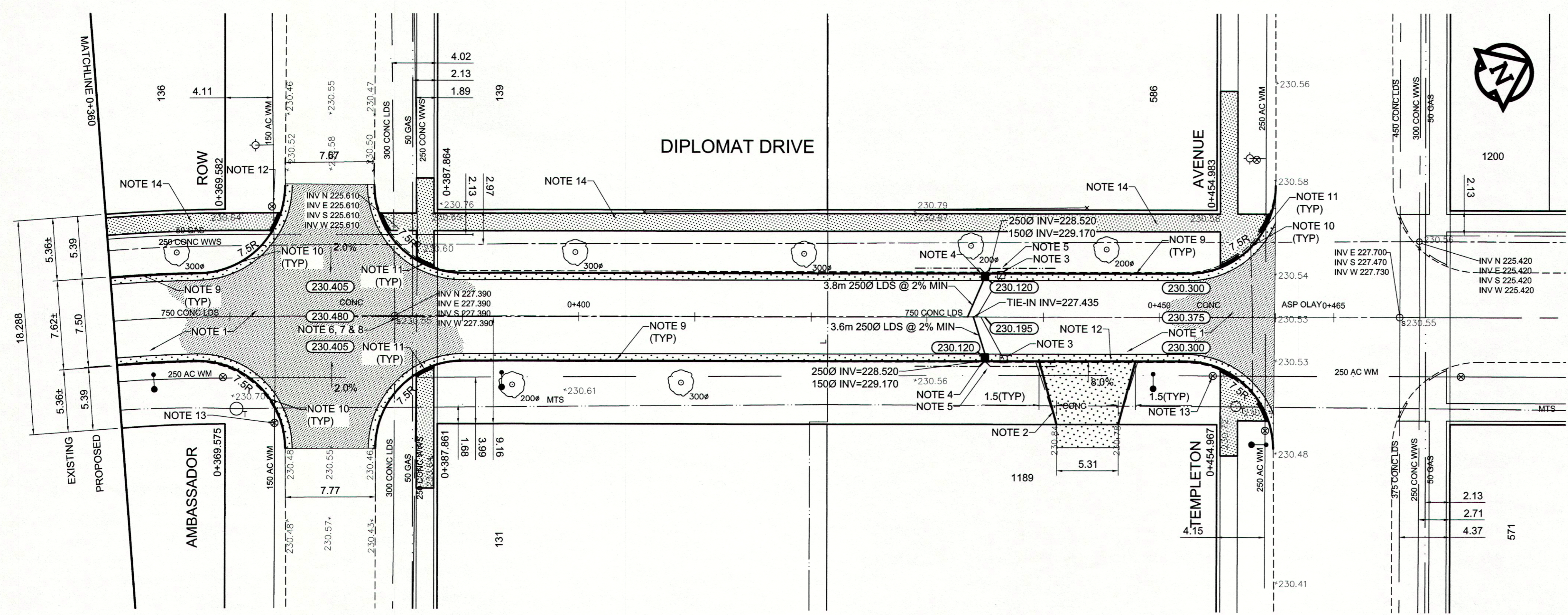


REFERENCE NOTES

- A. PAVEMENT DIMENSIONS ARE TO BACK OF CURB
- B. BASELINE IS CENTRE LINE RIGHT-OF-WAY
- C. PROPERTY LINES OBTAINED FROM CITY OF WINNIPEG L.B.I.S., AND NO SCALE FACTOR WAS APPLIED
- D. REFER TO AECOM FIELD BOOK NO. 4797

CONSTRUCTION NOTES

1. REMOVE EXISTING CONCRETE PAVEMENT AND CONSTRUCT NEW ASPHALTIC PAVEMENT TYPE1A (100mm)
2. REMOVE EXISTING CONCRETE PAVEMENT AND CONSTRUCT NEW 150mm REINFORCED CONCRETE PAVEMENT
3. REMOVE EXISTING CATCHBASIN AND ABANDON LEAD
4. INSTALL NEW CURB AND GUTTER INLET w/ CATCHBASIN (SD-024) AND CONNECT TO EXISTING 750 CONCRETE LDS
5. INSTALL 150mm SUBDRAIN
6. ADJUST EXISTING MANHOLE/CATCH BASIN TO GRADE
7. INSTALL NEW CAST IRON RISER RING
8. REMOVE EXISTING FRAME AND COVER AND PLACE NEW FRAME AND SOLID COVER (AP-005 AND AP-004)
9. CONSTRUCT NEW BARRIER CURB AND GUTTER (180mm HT.)
10. CONSTRUCT NEW MODIFIED BARRIER CURB AND GUTTER (180mm HT. DOWELLED)
11. CONSTRUCT NEW RAMP CURB AND GUTTER (10mm HT. INTEGRAL)
12. CONSTRUCT LIP CURB AND GUTTER (40mm HT. INTEGRAL)
13. ADJUST EXISTING WATER VALVE TO GRADE
14. RENEW EXISTING 100mm CONCRETE SIDEWALK
15. ADJUST EXISTING CURB STOP



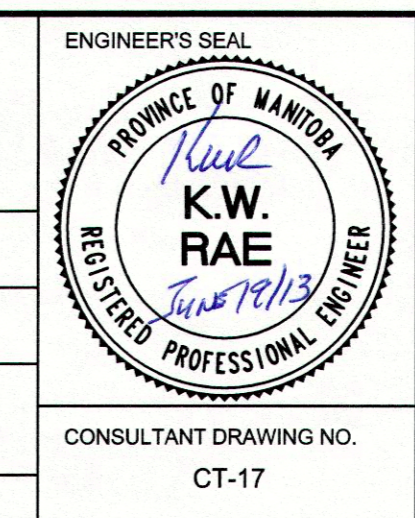
METRIC
WHOLE NUMBERS INDICATE MILLIMETRES
DECIMALIZED NUMBERS INDICATE METRES

EXISTING	LEGEND - PLAN	PROPOSED	EXISTING	LEGEND - PLAN	PROPOSED	EXISTING	LEGEND - PROFILE	PROPOSED	
	WATERMAIN HYDRANT			LAND DRAINAGE SEWER			MANHOLE		CATCH BASIN
	CURB INLET			CULVERT			GAS		
	HYDRO M.T.S.			ASPHALT			SURVEY BAR		ELEVATION (35.750)
	C PROFILE NORTHWEST GUTTER			N/W PROPERTY LINE			SIDEWALK RAMP		CONCRETE SIDEWALK FENCE

LOCATION APPROVED UNDERGROUND STRUCTURES		B.M. 81R913 S.W. cor. Leila Ave. & Diplomat Dr., Tbt. on pipe, ELEV. 231.109 on S.L. Leila Ave. & 5.1m E. of W.L. Diplomat	
NO.	REVISIONS	DATE	BY
0	ISSUED FOR TENDER	06/20/13	BC
A	ISSUED FOR REVIEW	06/10/13	BC

NOTE:
LOCATION OF UNDERGROUND STRUCTURES AS SHOWN ARE BASED ON THE BEST INFORMATION AVAILABLE, BUT NO GUARANTEE IS GIVEN THAT ALL EXISTING UTILITIES ARE SHOWN OR THAT THE GIVEN LOCATIONS ARE EXACT. CONFIRMATION OF EXISTENCE AND EXACT LOCATION OF ALL SERVICES MUST BE OBTAINED FROM THE INDIVIDUAL UTILITIES BEFORE PROCEEDING WITH CONSTRUCTION.

AECOM	
DESIGNED BY: BC/SS	CHECKED BY: KWR
DRAWN BY: SS/JT	APPROVED BY:
HOR. SCALE: 1:250	RELEASED FOR CONSTRUCTION BY:
VERTICAL: 1:10	DATE: June 17/13
DATE: JUNE 2013	DATE: June 17/13



THE CITY OF WINNIPEG
PUBLIC WORKS DEPARTMENT
ENGINEERING DIVISION

2013 LOCAL STREET RENEWAL PROGRAM

DIPLOMAT DRIVE - LEILA AVENUE TO TEMPLETON AVENUE
PAVEMENT RECONSTRUCTION
STATION 0+360 TO TEMPLETON AVENUE

CITY DRAWING NUMBER
SHEET 17 OF 17

CONSULTANT DRAWING NO. CT-17