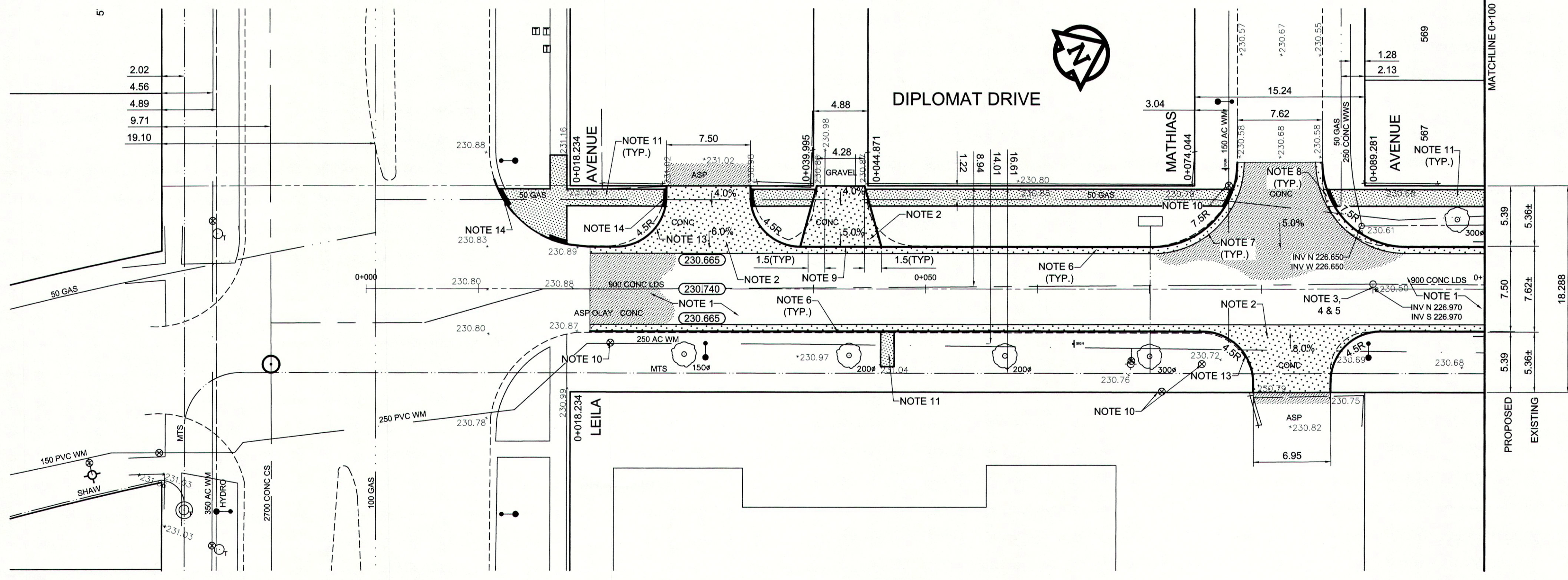


REFERENCE NOTES

- A. PAVEMENT DIMENSIONS ARE TO BACK OF CURB
- B. BASELINE IS CENTRE LINE RIGHT-OF-WAY
- C. PROPERTY LINES OBTAINED FROM CITY OF WINNIPEG L.B.I.S., AND NO SCALE FACTOR WAS APPLIED
- D. REFER TO AECOM FIELD BOOK NO. 4797

CONSTRUCTION NOTES

1. REMOVE EXISTING CONCRETE PAVEMENT AND CONSTRUCT NEW ASPHALTIC PAVEMENT TYPE 1A (100mm)
2. REMOVE EXISTING CONCRETE PAVEMENT AND CONSTRUCT NEW 150mm REINFORCED CONCRETE PAVEMENT
3. REMOVE EXISTING FRAME AND COVER AND INSTALL NEW FRAME AND COVER (AP-005 AND AP-004)
4. ADJUST EXISTING MANHOLE/CATCH BASIN TO GRADE
5. INSTALL NEW CAST IRON RISER RING
6. CONSTRUCT NEW BARRIER CURB AND GUTTER (180mm HT.)
7. CONSTRUCT NEW MODIFIED BARRIER CURB AND GUTTER (180mm HT.)
8. CONSTRUCT NEW RAMP CURB AND GUTTER (10mm HT. INTEGRAL)
9. CONSTRUCT NEW LIP CURB AND GUTTER (40mm HT. INTEGRAL)
10. ADJUST EXISTING WATER VALVE TO GRADE
11. RENEW EXISTING 100mm CONCRETE SIDEWALK
12. ADJUST EXISTING CURB STOP
13. CONSTRUCT NEW MODIFIED BARRIER (180mm HT. INTEGRAL)
14. CONSTRUCT NEW RAMP CURB (10mm HT. INTEGRAL)



METRIC
WHOLE NUMBERS INDICATE MILLIMETRES
DECIMALIZED NUMBERS INDICATE METRES

| EXISTING | LEGEND - PLAN | PROPOSED | EXISTING | LEGEND - PLAN | PROPOSED | EXISTING | LEGEND - PROFILE | PROPOSED |
|--------------|---------------------|--------------|-------------------|-------------------|-------------------|----------|-------------------|----------|
| 150 mm W.M. | WATERMAIN | 150 mm W.M. | HYDRO | HYDRO | HYDRO | --- | C PROFILE | --- |
| 300mm L.D.S. | LAND DRAINAGE SEWER | 300mm L.D.S. | M.T.S. | CONCRETE | CONCRETE | --- | NORTH/WEST GUTTER | --- |
| 250mm W.W.S. | WASTEWATER SEWER | 250mm W.W.S. | CONCRETE | ASPHALT | ASPHALT | --- | SOUTH/EAST GUTTER | --- |
| MANHOLE | MANHOLE | MANHOLE | PROPERTY LINE | PROPERTY LINE | PROPERTY LINE | --- | N/W PROPERTY LINE | --- |
| CATCH BASIN | CATCH BASIN | CATCH BASIN | SURVEY BAR | SURVEY BAR | SURVEY BAR | --- | S/E PROPERTY LINE | --- |
| CURB INLET | CURB INLET | CURB INLET | ELEVATION | ELEVATION | ELEVATION | --- | | |
| JUNCTIONS | JUNCTIONS | JUNCTIONS | TREE | TREE | TREE | --- | | |
| CULVERT | CULVERT | CULVERT | SIDEWALK RAMP | SIDEWALK RAMP | SIDEWALK RAMP | --- | | |
| GAS | GAS | GAS | CONCRETE SIDEWALK | CONCRETE SIDEWALK | CONCRETE SIDEWALK | --- | | |
| | | | FENCE | FENCE | FENCE | --- | | |

LOCATION APPROVED UNDERGROUND STRUCTURES

SUPV. U/G STRUCTURES COMMITTEE DATE

NOTE:
LOCATION OF UNDERGROUND STRUCTURES AS SHOWN ARE BASED ON THE BEST INFORMATION AVAILABLE. BUT NO GUARANTEE IS GIVEN THAT ALL EXISTING UTILITIES ARE SHOWN OR THAT THE GIVEN LOCATIONS ARE EXACT. CONFIRMATION OF EXISTENCE AND EXACT LOCATION OF ALL SERVICES MUST BE OBTAINED FROM THE INDIVIDUAL UTILITIES BEFORE PROCEEDING WITH CONSTRUCTION.

B.M. 81R913 S.W. cor. Leila Ave. & Diplomat Dr. Tabl. on pipe, ELEV. 231.109

| | | | |
|-------------------|----------|-------------|-----|
| DESIGNED BY | BC/SS | CHECKED BY | KWR |
| DRAWN BY | SS/JT | APPROVED BY | |
| ISSUED FOR TENDER | 06/20/13 | BC | |
| ISSUED FOR REVIEW | 06/10/13 | BC | |
| REVISIONS | | | |

DATE: JUNE 2013

AECOM

ENGINEER'S SEAL

PROVINCE OF MANITOBA
K.W. RAE
REGISTERED PROFESSIONAL ENGINEER

CONSULTANT DRAWING NO. CT-14

THE CITY OF WINNIPEG
PUBLIC WORKS DEPARTMENT
ENGINEERING DIVISION

2013 LOCAL STREET RENEWAL PROGRAM

DIPLOMAT DRIVE - LEILA AVENUE TO TEMPLETON AVENUE
ASPHALT PAVEMENT RECONSTRUCTION
LEILA AVENUE TO STATION 0+100

CITY DRAWING NUMBER
SHEET 14 OF 17