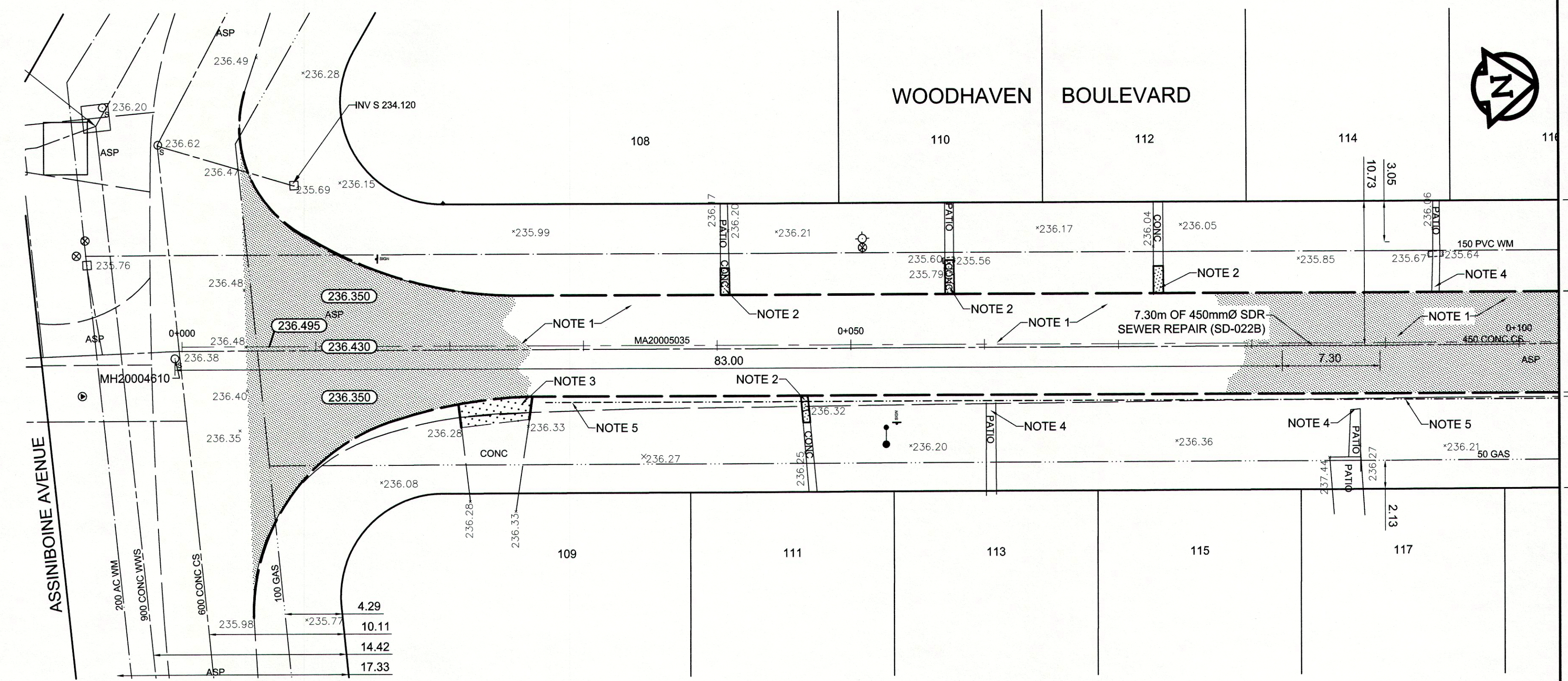


SEWER JUNCTION INFORMATION*			
REF MH	DIST FROM MH	SIZE	CLOCK AT
MH20004602	35.2	150Ø/200Ø	02
MH20004602	38.5	150Ø/200Ø	10
MH20004602	39.1	150Ø/200Ø	02

*JUNCTION INFORMATION FROM VIDEO INSPECTION

- REFERENCE NOTES
- PAVEMENT DIMENSIONS ARE TO EDGE OF PAVEMENT
 - BASELINE IS CENTRE LINE RIGHT-OF-WAY
 - PROPERTY LINES OBTAINED FROM CITY OF WINNIPEG L.B.I.S., AND NO SCALE FACTOR WAS APPLIED
 - REFER TO AECOM FIELD BOOK NO. 4792

- CONSTRUCTION NOTES
- REMOVE EXISTING ASPHALT PAVEMENT AND CONSTRUCT NEW ASPHALTIC PAVEMENT TYPE 1A
 - RENEW EXISTING 100mm CONCRETE SIDEWALK
 - REMOVE EXISTING CONCRETE PAVEMENT AND CONSTRUCT NEW 150mm REINFORCED CONCRETE PAVEMENT
 - REMOVE AND REINSTALL PATIO BLOCKS
 - INSTALL 150mm SUBDRAIN



AECOM
Certificate of Authorization
AECOM Canada Ltd.
No. 4671 Date: June 19/13

METRIC
WHOLE NUMBERS INDICATE MILLIMETRES
DECIMALIZED NUMBERS INDICATE METRES

EXISTING	LEGEND - PLAN	PROPOSED	EXISTING	LEGEND - PLAN	PROPOSED	EXISTING	LEGEND - PROFILE	PROPOSED
150 mm W.M.	WATERMAIN	150 mm W.M.	HYDRO	HYDRO	HYDRO	C PROFILE	C PROFILE	C PROFILE
300mm L.D.S.	LAND DRAINAGE SEWER	300mm L.D.S.	M.T.S.	M.T.S.	M.T.S.	NORTH/WEST GUTTER	NORTH/WEST GUTTER	NORTH/WEST GUTTER
250mm W.W.S.	WASTEWATER SEWER	250mm W.W.S.	CONCRETE	CONCRETE	CONCRETE	SOUTH/EAST GUTTER	SOUTH/EAST GUTTER	SOUTH/EAST GUTTER
○	MANHOLE	○	ASPHALT	ASPHALT	ASPHALT	N/W PROPERTY LINE	N/W PROPERTY LINE	N/W PROPERTY LINE
□	CATCH BASIN	□	PROPERTY LINE	PROPERTY LINE	PROPERTY LINE	S/E PROPERTY LINE	S/E PROPERTY LINE	S/E PROPERTY LINE
▽	CURB INLET	▽	SURVEY BAR	SURVEY BAR	SURVEY BAR			
+	JUNCTIONS	+	ELEVATION	ELEVATION	ELEVATION			
—	CULVERT	—	TREE	TREE	TREE			
—	GAS	—	SIDEWALK RAMP	SIDEWALK RAMP	SIDEWALK RAMP			
			CONCRETE SIDEWALK	CONCRETE SIDEWALK	CONCRETE SIDEWALK			
			FENCE	FENCE	FENCE			

LOCATION APPROVED UNDERGROUND STRUCTURES

SUPV. U/G STRUCTURES COMMITTEE DATE

NOTE:
LOCATION OF UNDERGROUND STRUCTURES AS SHOWN ARE BASED ON THE BEST INFORMATION AVAILABLE. BUT NO GUARANTEE IS GIVEN THAT ALL EXISTING UTILITIES ARE SHOWN OR THAT THE GIVEN LOCATIONS ARE EXACT. CONFIRMATION OF EXISTENCE AND EXACT LOCATION OF ALL SERVICES MUST BE OBTAINED FROM THE INDIVIDUAL UTILITIES BEFORE PROCEEDING WITH CONSTRUCTION.

B.M. 83R502 S. side of Assiniboine Ave. @ Woodhaven Blvd., 70m on top of 0.50m dia. x 2.4m iron pipe, 2.5m E. of C.L. asphalt roadway of Woodhaven Blvd., or 22.0m E. & 3.4m N. of deflection between Lots 1 & 2, B.M. 83R 2151

DESIGNED BY	BC/CS	CHECKED BY	KWR
DRAWN BY	SS/CS	APPROVED BY	
HOR. SCALE:	1:250	RELEASED FOR CONSTRUCTION BY:	
VERTICAL:	1:10	DATE	June 19/13

ENGINEER'S SEAL
PROVINCE OF MANITOBA
K.W. RAE
REGISTERED PROFESSIONAL ENGINEER
CONSULTANT DRAWING NO. CT-05

THE CITY OF WINNIPEG
PUBLIC WORKS DEPARTMENT
ENGINEERING DIVISION

2013 LOCAL STREET RENEWAL PROGRAM

WOODHAVEN BOULEVARD PAVEMENT RECONSTRUCTION
ASSINIBOINE AVENUE TO STA. 0+103.00

CITY DRAWING NUMBER SHEET 5 OF 17