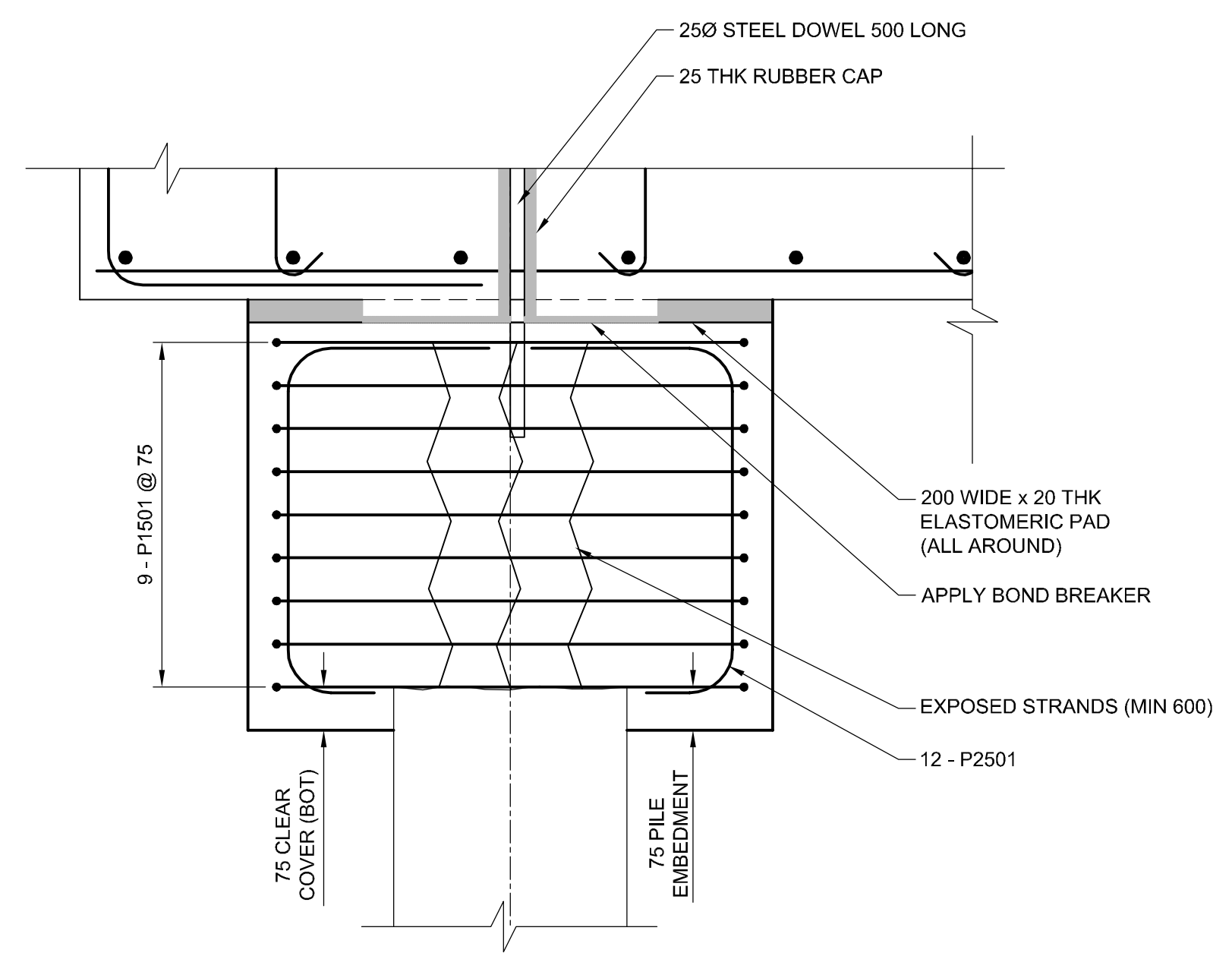
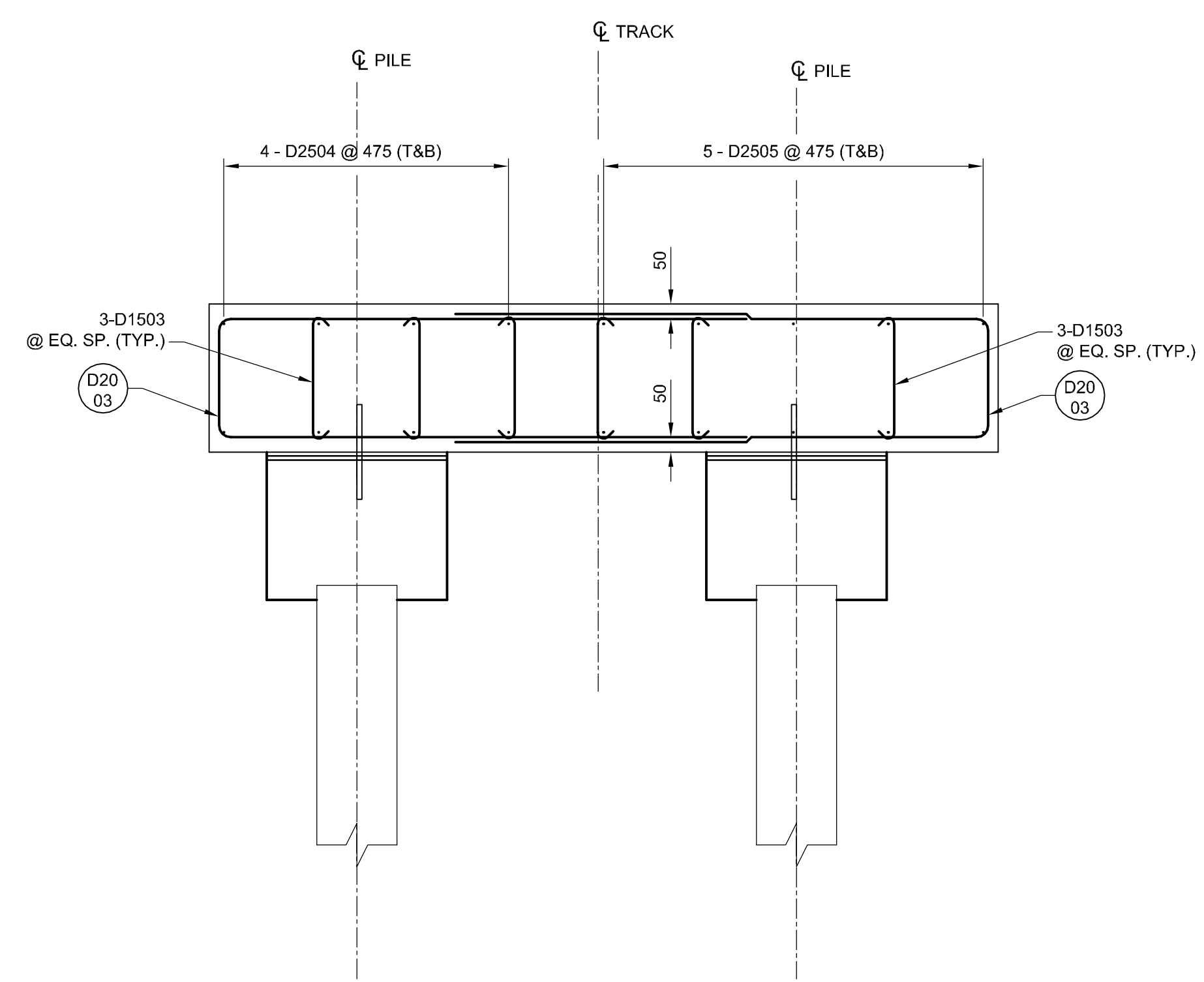


SECTION A
SCALE 1:25



DETAIL 1
SCALE 1:10



SECTION B
SCALE 1:25

STRAIGHT BARS				BENT BARS (continued)				BENDING DIAGRAM		
MK.	No.	LENGTH	MASS	MK.	No.	LENGTH	MASS			
D2001	64	18000	2713							
D2002	64	7050	1063							
D2004	80	9400	1771							
D2501	222	9400	8191							
D2503	30	6000	707							
BENT BARS										
D1501	130	1900	388							
D1502	46	1855	134							
D1503	624	1100	1078							
D2003	48	6000	678							
D2005	30	3200	226							
D2502	30	3200	377							
D2504	16	7900	496							
D2505	20	6400	502							
P1501	180	3260	921							
P2501	240	1100	1036							
TOTAL MASS OF REINFORCING STEEL							20280 kg			
TOTAL VOLUME OF STRUCTURAL CONCRETE							190 m ³			

- NOTES:**
- ALL DIMENSIONS GIVEN ARE OUT TO OUT, EXCEPT RADII ARE INSIDE DIMENSIONS.
 - ALL REINFORCING STEEL SHALL BE DEFORMED REINFORCING, UNLESS NOTED OTHERWISE IN THE ABOVE BILL OF REINFORCING STEEL.
 - ALL REINFORCING STEEL SHALL CONFORM TO CAN/CSA G30.18-M92 GRADE 400W UNLESS NOTED OTHERWISE IN THE ABOVE BILL OF REINFORCING STEEL.
 - LIKE BARS SHALL BE BUNDLED, SECURELY TIED AND IDENTIFIED AS TO MARK AND SITE No. BY APPROPRIATE MEANS. ALL OTHER ITEMS SHALL BE IDENTIFIED IN A SIMILAR FASHION.

METRIC
WHOLE NUMBERS INDICATE MILLIMETRES
DECIMALIZED NUMBERS INDICATE METRES

BM	00-000		
ELEV	200.000m		
C	ISSUED FOR TENDER	13/06/04	KC
B	ISSUED FOR TENDER	11/07/04	EDM
A	ISSUED FOR REVIEW	11/05/07	EDM
NO.	REVISIONS	YYMMDD	BY

AECOM		<small>This drawing has been prepared for the use of AECOM's client and may not be used, reproduced or relied upon by third parties, except as agreed by AECOM and its client, as required by law or for use by governmental reviewing agencies. AECOM accepts no responsibility, and denies any liability whatsoever, to any party that modifies this drawing without AECOM's express written consent. Do not scale this document. All measurements must be obtained from stated dimensions.</small>	
DESIGNED BY	AP	CHECKED BY	SBB
DRAWN BY	EDM	APPROVED BY	EBL
HOR. SCALE	AS SHOWN	RELEASED FOR CONSTRUCTION	
VERT. SCALE	AS SHOWN		
DATE	11/05/16	DATE	

PROFESSIONAL'S SEAL
 PROVINCE OF MANITOBA
P. POCHANART
 Member
 30017
 2013-06-04
 REGISTERED PROFESSIONAL ENGINEER
 CONSULTANT DRAWING NO.
 60196984-01-S-106-ROX.dwg

THE CITY OF WINNIPEG
 WATER & WASTE DEPARTMENT
 ENGINEERING DIVISION
GWWD AQUEDUCT BRIDGING STRUCTURE
AT MILE 13.19
SECTION REINFORCEMENT

CITY DRAWING NUMBER	D-12477
SHEET	6 OF 7
DRAWING No.	06
REV	C