

METRIC

WHOLE NUMBERS INDICATE MILLIMETRES  
DECIMALIZED NUMBERS INDICATE METRES

WARNING

IF POWER EQUIPMENT OR EXPLOSIVES ARE TO BE USED FOR EXCAVATION ON THIS PROJECT THE CONTRACTOR MUST:

- NOTIFY THE GAS COMPANY OF THE PROPOSED LOCATION OF EXCAVATION.
- TAKE PRECAUTION TO AVOID DAMAGE TO GAS COMPANY INSTALLATIONS SEE PROVINCIAL REGULATION 210/72 FOR DETAILS.
- OBTAIN EXCAVATION PERMITS PRIOR TO CONSTRUCTION.
- A MINIMUM VERTICAL SEPARATION OF 300 mm FROM GAS MAINS AND 100 mm FROM GAS SERVICE MUST BE MAINTAINED BETWEEN ANY MANITOBA HYDRO FACILITY AND ANY NEW INSTALLATIONS.
- A MINIMUM 900 mm OF COVER SHALL BE MAINTAINED IN ALL AREAS WHERE EQUIPMENT WILL BE CROSSING, TRAVELING OR COMPACTING OVER THE HIGH PRESSURE GAS MAINS.
- IF EQUIPMENT MUST CROSS, TRAVEL, OR COMPACT OVER THE GAS MAIN WITH LESS THAN THE MINIMUM DEPTH COVER, EARTH BRIDGING OR STEEL PLATES SHALL BE PLACED OVER THE MAIN AND EXTEND A MINIMUM OF 1.0 METRE ON EITHER SIDE AT EACH CROSSING LOCATION.

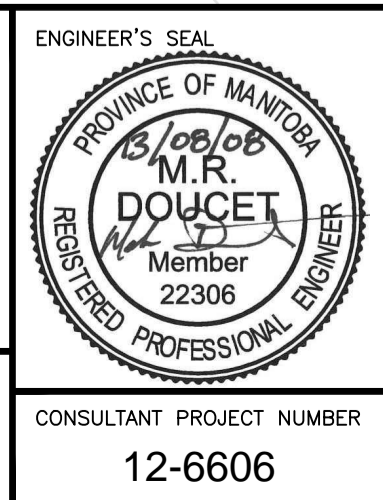
150 WM	WATERMAIN	150 WWS	WASTE WATER SEWER	MTS	M.T.S.	150 mm W.M.	WATERMAIN	150 mm W.W.S.	WASTE WATER SEWER
HYDRANT VALVE	CONCRETE ASPHALT PLANING	300 LDS	LAND DRAINAGE SEWER	CONCRETE ASPHALT PLANING	300 mm L.D.S.	HYDRANT VALVE	LAND DRAINAGE SEWER	300 mm L.D.S.	LAND DRAINAGE SEWER
250 WWS	WASTE WATER SEWER	250 WWS	WASTE WATER SEWER	CONCRETE ASPHALT PLANING	250 mm W.W.S.	WASTE WATER SEWER	WASTE WATER SEWER	250 mm W.W.S.	WASTE WATER SEWER
MANHOLE	MANHOLE	MANHOLE	MANHOLE	PAVING STONES	PAVING STONES	MANHOLE	MANHOLE	MANHOLE	MANHOLE
CATCH BASIN	CATCH BASIN	CATCH BASIN	CATCH BASIN	PROPERTY LINE	PROPERTY LINE	CATCH BASIN	CATCH BASIN	CATCH BASIN	CATCH BASIN
TEST HOLES	TEST HOLES	TEST HOLES	TEST HOLES	SURVEY BAR	SURVEY BAR	TEST HOLES	TEST HOLES	TEST HOLES	TEST HOLES
JUNCTIONS	JUNCTIONS	JUNCTIONS	JUNCTIONS	CURB RAMP	CURB RAMP	JUNCTIONS	JUNCTIONS	JUNCTIONS	JUNCTIONS
CULVERT	CULVERT	CULVERT	CULVERT	DITCH	DITCH	CULVERT	CULVERT	CULVERT	CULVERT
100 GAS	GAS	100 GAS	GAS	SWALE	SWALE	100 GAS	GAS	100 GAS	GAS
EXISTING	LEGEND-PLAN	PROPOSED	EXISTING	LEGEND-PLAN	PROPOSED	EXISTING	LEGEND-PROFILE	PROPOSED	EXISTING

UNDERGROUND STRUCTURES  
SUPV. U/G STRUCTURES COMMITTEE DATE

NOTE:  
LOCATION OF UNDERGROUND STRUCTURES AS SHOWN ARE BASED ON THE BEST INFORMATION AVAILABLE BUT NO GUARANTEE IS GIVEN THAT ALL EXISTING UTILITIES ARE SHOWN OR THAT THE GIVEN LOCATIONS ARE EXACT. CONFIRMATION OF EXISTENCE AND EXACT LOCATION OF ALL SERVICES MUST BE OBTAINED FROM THE INDIVIDUAL UTILITIES BEFORE PROCEEDING WITH CONSTRUCTION.

B.M.	654008	N: 5515764.610	654210	N: 5514436.957
ELEV.	232.463	m	ELEV.	630550.534
NO.	REVISIONS	DATE	BY	DATE
0	ISSUED FOR TENDER	13/08/08	MRD	

DESIGNED BY	RG
DRAWN BY	RG
CHECKED BY	DBW
APPROVED BY	DPK
HOR. SCALE	1:500
VERTICAL	1:20
DATE	2013/08/08



**THE CITY OF WINNIPEG PUBLIC WORKS DEPARTMENT**

Waverley West Arterial Roads Project (WWARP) Part 3 - Contract 2  
Route 90 to Route 165 Overpass (Kenaston Blvd.) and Associated Works

CITY DRAWING NUMBER: B242-13-99  
SHEET 99 OF 128  
CONSULTANT DRAWING NUMBER: P-3349-99

PLAN AND PROFILE - ATP 5