

METRIC

WHOLE NUMBERS INDICATE MILLIMETRES
DECIMALIZED NUMBERS INDICATE METRES

WARNING

IF POWER EQUIPMENT OR EXPLOSIVES ARE TO BE USED FOR EXCAVATION ON THIS PROJECT THE CONTRACTOR MUST:

1. NOTIFY THE GAS COMPANY OF THE PROPOSED LOCATION OF EXCAVATION.
2. TAKE PRECAUTION TO AVOID DAMAGE TO GAS COMPANY INSTALLATIONS SEE PROVINCIAL REGULATION 210/72 FOR DETAILS.
3. OBTAIN EXCAVATION PERMITS PRIOR TO CONSTRUCTION.
4. A MINIMUM VERTICAL SEPARATION OF 300 mm FROM GAS MAINS AND 100 mm FROM GAS SERVICE MUST BE MAINTAINED BETWEEN ANY MANITOBA HYDRO FACILITY AND ANY NEW INSTALLATIONS.
5. A MINIMUM 900 mm OF COVER SHALL BE MAINTAINED IN ALL AREAS WHERE EQUIPMENT WILL BE CROSSING, TRAVELING OR COMPACTING OVER THE HIGH PRESSURE GAS MAINS.
6. IF EQUIPMENT MUST CROSS, TRAVEL, OR COMPACT OVER THE GAS MAIN WITH LESS THAN THE MINIMUM DEPTH COVER, EARTH BRIDGING OR STEEL PLATES SHALL BE PLACED OVER THE MAIN AND EXTEND A MINIMUM OF 1.0 METRE ON EITHER SIDE AT EACH CROSSING LOCATION.

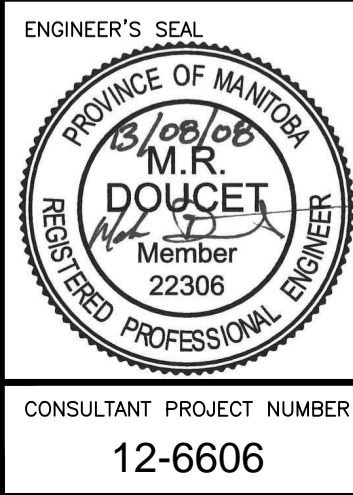
150 WM	WATERMAIN	150 WM	M.T.S.	M.T.S.	150 mm W.M.	WATERMAIN	150 mm W.M.
HYDRANT VALVE	HYDRANT VALVE	CONCRETE ASPHALT PLANING	CONCRETE ASPHALT PLANING	CONCRETE ASPHALT PLANING	CONCRETE ASPHALT PLANING	CONCRETE ASPHALT PLANING	CONCRETE ASPHALT PLANING
LAND DRAINAGE SEWER	LAND DRAINAGE SEWER	WASTE WATER SEWER	WASTE WATER SEWER	WASTE WATER SEWER	WASTE WATER SEWER	WASTE WATER SEWER	WASTE WATER SEWER
MANHOLE	MANHOLE	CATCH BASIN	CATCH BASIN	TEST HOLES	TEST HOLES	JUNCTIONS	JUNCTIONS
CULVERT	CULVERT	100 GAS	100 GAS	EXISTING	LEGEND-PLAN	PROPOSED	LEGEND-PROFILE

UNDERGROUND STRUCTURES

NOTE:
LOCATION OF UNDERGROUND STRUCTURES AS SHOWN ARE BASED ON THE BEST INFORMATION AVAILABLE BUT NO GUARANTEE IS GIVEN THAT ALL EXISTING UTILITIES ARE SHOWN OR THAT THE GIVEN LOCATIONS ARE EXACT. CONFIRMATION OF EXISTENCE AND EXACT LOCATION OF ALL SERVICES MUST BE OBTAINED FROM THE INDIVIDUAL UTILITIES BEFORE PROCEEDING WITH CONSTRUCTION.

B.M. 654008	N: 5515764.610	E: 633359.697	ELEV. 232.463 m
B.M. 654210	N: 5514436.957	E: 630550.534	ELEV. 232.463 m

DESIGNED BY	RG
DRAWN BY	RG
CHECKED BY	DBW
APPROVED BY	DPK
HOR. SCALE	1:500
VERTICAL	1:20
ISSUED FOR TENDER	13/08/08 MRD
NO. REVISIONS	DATE BY



THE CITY OF WINNIPEG
PUBLIC WORKS DEPARTMENT

Waverley West Arterial Roads Project
(WWARP) PART 3 - CONTRACT 2
ROUTE 90 TO ROUTE 165 OVERPASS (KENASTON BLVD.)
AND ASSOCIATED WORKS

CITY DRAWING NUMBER: B242-13-96
SHEET 96 OF 128
CONSULTANT DRAWING NUMBER: P-3349-96

CONSULTANT PROJECT NUMBER: 12-6606

PLAN AND PROFILE - ATP 1 & 1A