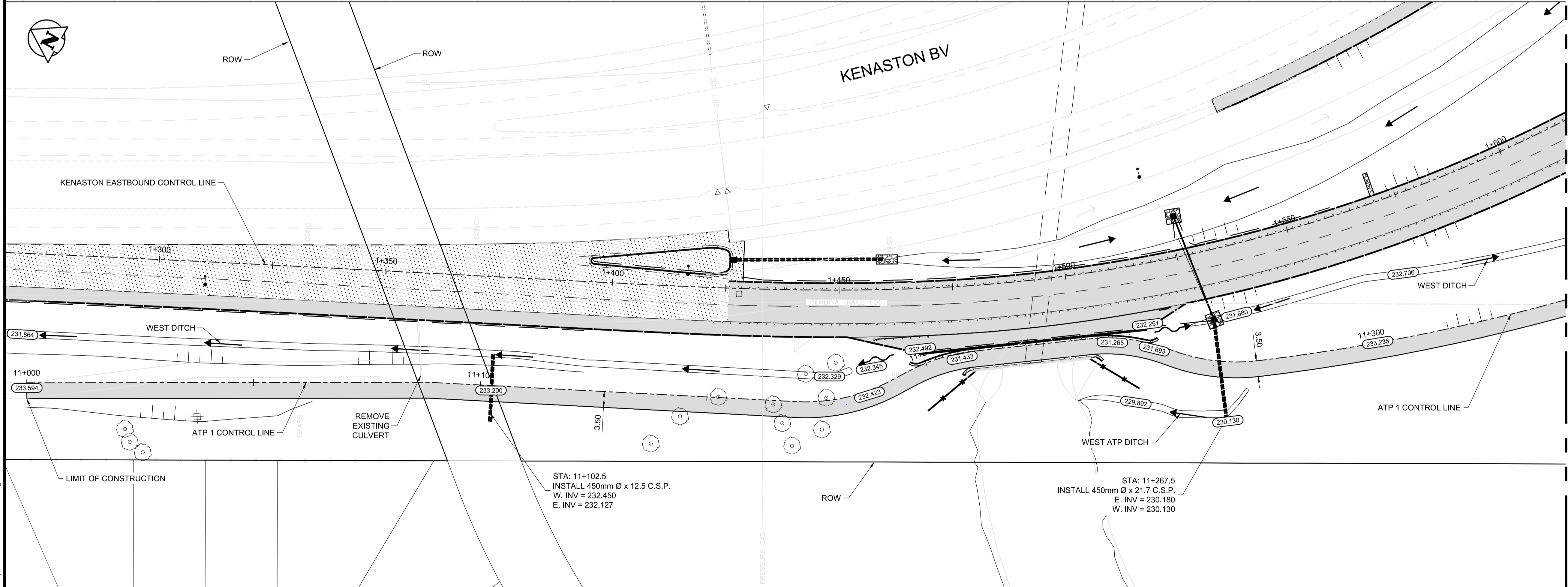
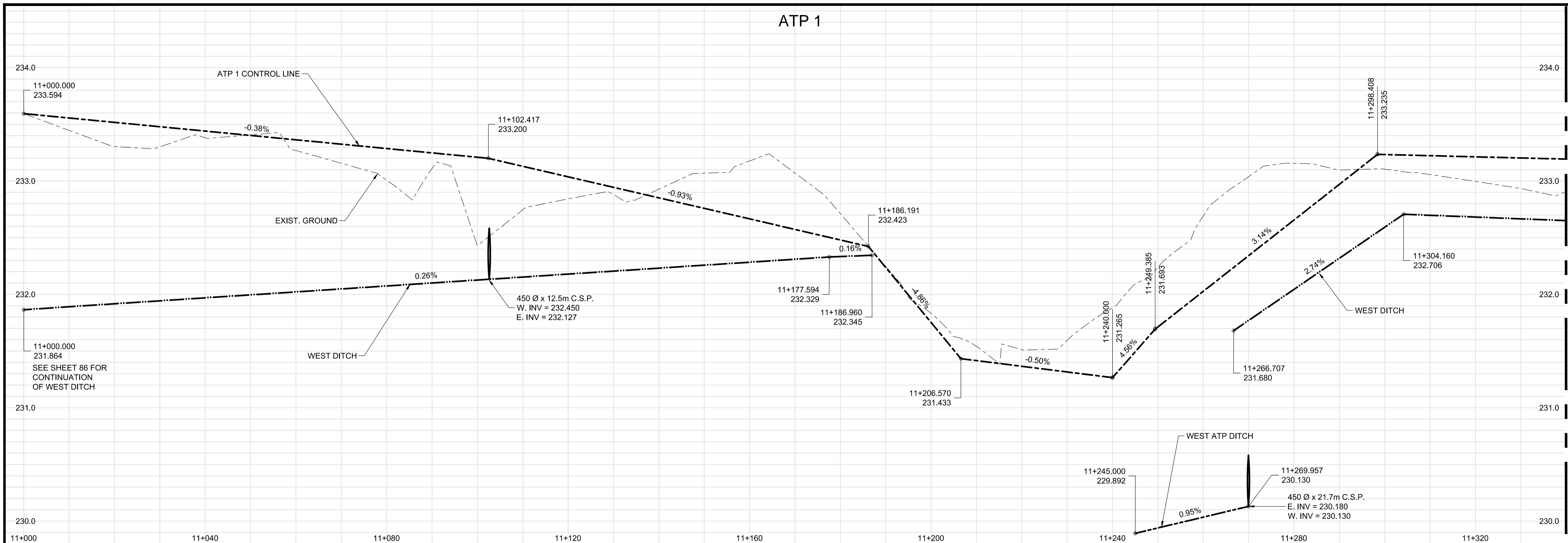


ATP 1



MATCHLINE AT STA: 11+340

APEGM
 Certificate of Authorization
 Dillon Consulting Limited (MB)
 No. 1789 Date: 2013/08/08

METRIC

WHOLE NUMBERS INDICATE MILLIMETRES
 DECIMALIZED NUMBERS INDICATE METRES

WARNING

- IF POWER EQUIPMENT OR EXPLOSIVES ARE TO BE USED FOR EXCAVATION ON THIS PROJECT THE CONTRACTOR MUST:
1. NOTIFY THE GAS COMPANY OF THE PROPOSED LOCATION OF EXCAVATION.
 2. TAKE PRECAUTION TO AVOID DAMAGE TO GAS COMPANY INSTALLATIONS SEE PROVINCIAL REGULATION 210/72 FOR DETAILS.
 3. OBTAIN EXCAVATION PERMITS PRIOR TO CONSTRUCTION.
 4. A MINIMUM VERTICAL SEPARATION OF 300 mm FROM GAS MAINS AND 100 mm FROM GAS SERVICE MUST BE MAINTAINED BETWEEN ANY MANITOBA HYDRO FACILITY AND ANY NEW INSTALLATIONS.
 5. A MINIMUM 900 mm OF COVER SHALL BE MAINTAINED IN ALL AREAS WHERE EQUIPMENT WILL BE CROSSING, TRAVELING OR COMPACTING OVER THE HIGH PRESSURE GAS MAINS.
 6. IF EQUIPMENT MUST CROSS, TRAVEL, OR COMPACT OVER THE GAS MAIN WITH LESS THAN THE MINIMUM DEPTH COVER, EARTH BRIDGING OR STEEL PLATES SHALL BE PLACED OVER THE MAIN AND EXTEND A MINIMUM OF 1.0 METRE ON EITHER SIDE AT EACH CROSSING LOCATION.

G:\CAD\126606\Contract_2\Current\Civil_ATP_Plan_Profile.dwg

| | | | | | | | |
|----------|---------------------|----------|----------|---------------|-------------|---------------------|----------------|
| 150 WM | WATERMAIN | 150 WM | MTS | M.T.S. | 150 mm W.M. | WATERMAIN | 150 mm W.M. |
| + | HYDRANT | + | + | CONCRETE | + | HYDRANT | + |
| + | VALVE | + | + | ASPHALT | + | VALVE | + |
| 300 LDS | LAND DRAINAGE SEWER | 300 LDS | --- | PLANING | --- | LAND DRAINAGE SEWER | --- |
| 250 WWS | WASTE WATER SEWER | 250 WWS | --- | SIDEWALK | --- | WASTE WATER SEWER | --- |
| ○ | MANHOLE | ○ | --- | PAVING STONES | --- | Q PROFILE | --- |
| ○ | CATCH BASIN | ○ | --- | PROPERTY LINE | --- | NORTH/WEST GUTTER | --- |
| ○ | TEST HOLES | ○ | --- | SURVEY BAR | --- | SOUTH/EAST GUTTER | --- |
| + | JUNCTIONS | + | --- | CURB RAMP | --- | NORTH/WEST T/LANE | --- |
| + | CULVERT | + | --- | DITCH | --- | SOUTH/EAST T/LANE | --- |
| 100 GAS | GAS | 100 GAS | --- | SWALE | --- | | |
| EXISTING | LEGEND-PLAN | PROPOSED | EXISTING | LEGEND-PLAN | PROPOSED | EXISTING | LEGEND-PROFILE |

UNDERGROUND STRUCTURES

SUPV. U/G STRUCTURES COMMITTEE DATE

NOTE:
 LOCATION OF UNDERGROUND STRUCTURES AS SHOWN ARE BASED ON THE BEST INFORMATION AVAILABLE BUT NO GUARANTEE IS GIVEN THAT ALL EXISTING UTILITIES ARE SHOWN OR THAT THE GIVEN LOCATIONS ARE EXACT. CONFIRMATION OF EXISTENCE AND EXACT LOCATION OF ALL SERVICES MUST BE OBTAINED FROM THE INDIVIDUAL UTILITIES BEFORE PROCEEDING WITH CONSTRUCTION.

| | | | |
|-----------------|----------------|---------------|----------------|
| B.M. 654008 | N: 5515764.610 | 654210 | N: 5514436.957 |
| ELEV. 232.463 m | E: 633359.697 | ELEV. 230.130 | E: 630550.534 |

| | |
|-------------------|--------------|
| DESIGNED BY | RG |
| DRAWN BY | RG |
| CHECKED BY | DBW |
| APPROVED BY | DPK |
| HOR. SCALE | 1:500 |
| VERTICAL | 1:20 |
| ISSUED FOR TENDER | 13/08/08 MRD |
| NO. REVISIONS | DATE BY |
| | 2013/08/08 |

DILLON CONSULTING

ENGINEER'S SEAL
 PROVINCE OF MANITOBA
M.R. DOUCET
 Member
 22306
 REGISTERED PROFESSIONAL ENGINEER

THE CITY OF WINNIPEG
 PUBLIC WORKS DEPARTMENT

Waverley West Arterial Roads Project
 (WWARP) PART 3 - CONTRACT 2
 ROUTE 90 TO ROUTE 165 OVERPASS (KENASTON BLVD.)
 AND ASSOCIATED WORKS

CITY DRAWING NUMBER
B242-13-95

SHEET OF
95 OF **128**

CONSULTANT DRAWING NUMBER
P-3349-95

PLAN AND PROFILE - ATP 1

CONSULTANT PROJECT NUMBER
12-6606