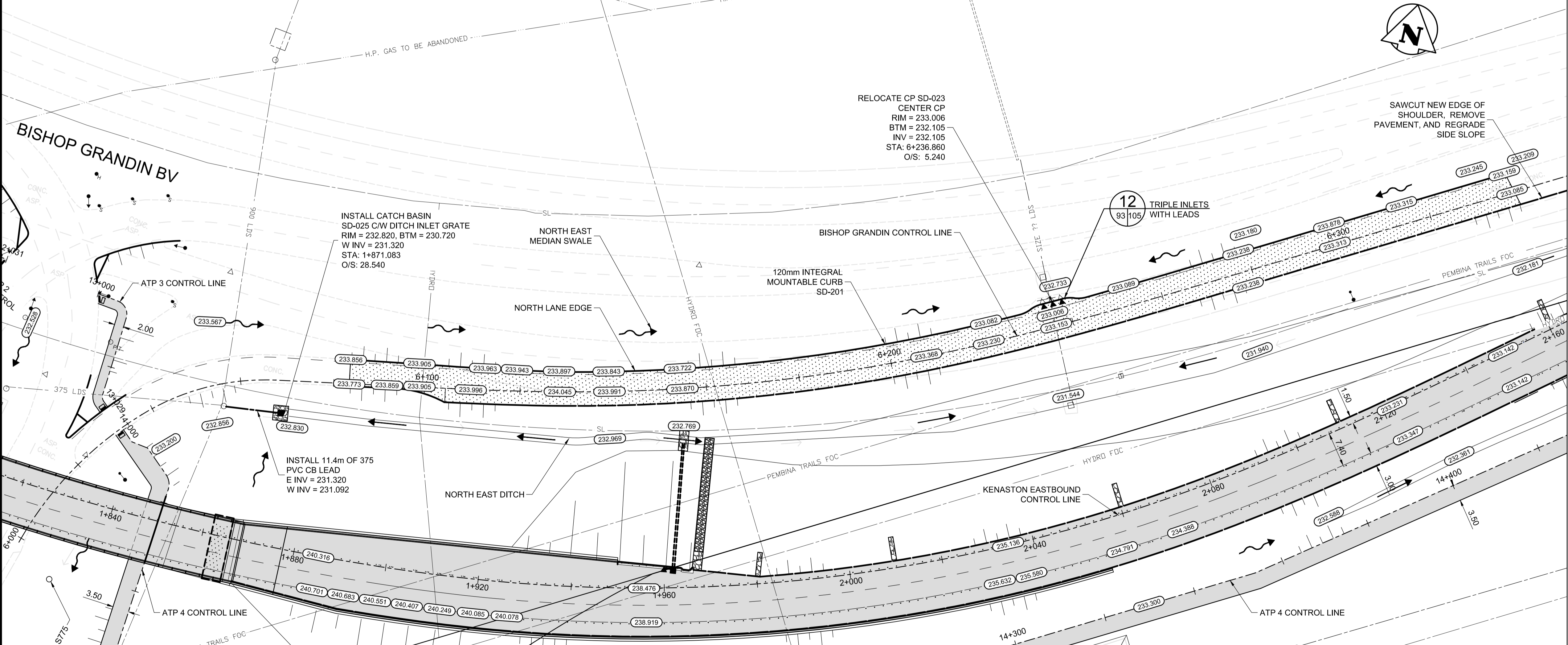
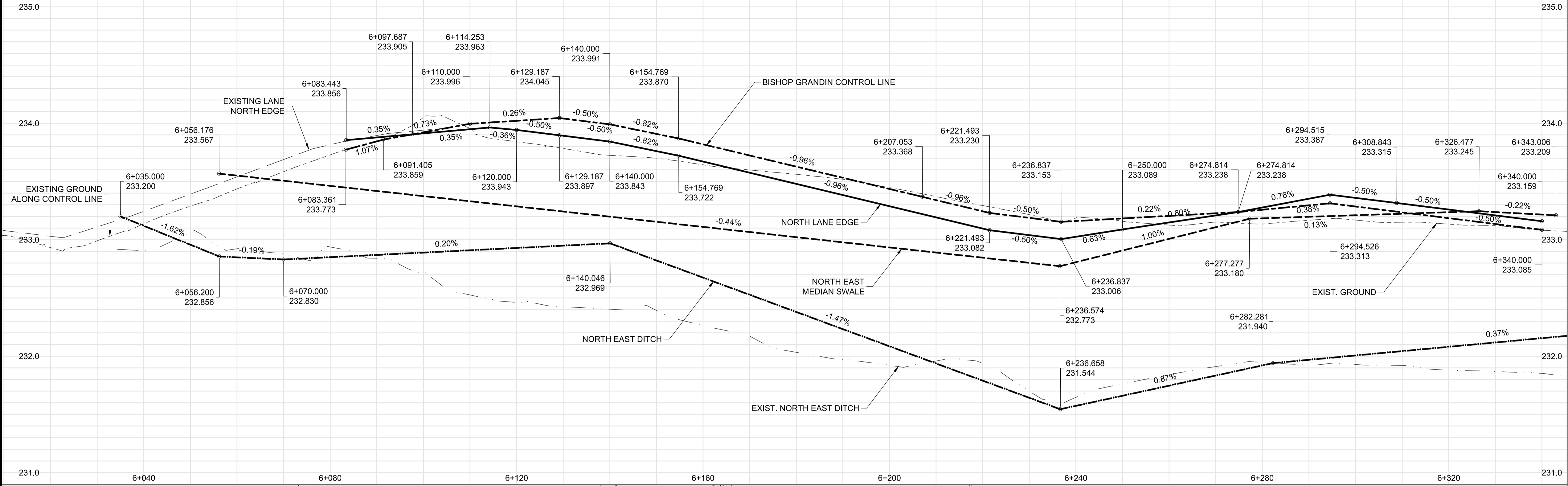


BISHOP GRANDIN EB



METRIC

WHOLE NUMBERS INDICATE MILLIMETRES
DECIMALIZED NUMBERS INDICATE METRES

WARNING

- IF POWER EQUIPMENT OR EXPLOSIVES ARE TO BE USED FOR EXCAVATION ON THIS PROJECT THE CONTRACTOR MUST:
- NOTIFY THE GAS COMPANY OF THE PROPOSED LOCATION OF EXCAVATION.
 - TAKE PRECAUTION TO AVOID DAMAGE TO GAS COMPANY INSTALLATIONS SEE PROVINCIAL REGULATION 210/72 FOR DETAILS.
 - OBTAIN EXCAVATION PERMITS PRIOR TO CONSTRUCTION.
 - A MINIMUM VERTICAL SEPARATION OF 300 mm FROM GAS MAINS AND 100 mm FROM GAS SERVICE MUST BE MAINTAINED BETWEEN ANY MANITOBA HYDRO FACILITY AND ANY NEW INSTALLATIONS.
 - A MINIMUM 900 mm OF COVER SHALL BE MAINTAINED IN ALL AREAS WHERE EQUIPMENT WILL BE CROSSING, TRAVELING OR COMPACTING OVER THE HIGH PRESSURE GAS MAINS.
 - IF EQUIPMENT MUST CROSS, TRAVEL, OR COMPACT OVER THE GAS MAIN WITH LESS THAN THE MINIMUM DEPTH COVER, EARTH BRIDGING OR STEEL PLATES SHALL BE PLACED OVER THE MAIN AND EXTEND A MINIMUM OF 1.0 METRE ON EITHER SIDE AT EACH CROSSING LOCATION.

G:\CAD\126606\Contract_2\Current\Civil_Plan_Profile.dwg

150 WM	WATERMAIN	150 WM	M.T.S.	M.T.S.	150 mm W.M.	WATERMAIN	150 mm W.M.
300 LDS	HYDRANT VALVE	300 LDS	CONCRETE	CONCRETE	300 mm L.D.S.	HYDRANT VALVE	300 mm L.D.S.
250 WWS	LAND DRAINAGE SEWER	250 WWS	ASPHALT	ASPHALT	250 mm W.W.S.	WASTE WATER SEWER	250 mm W.W.S.
100 GAS	WASTE WATER SEWER	100 GAS	PLANING	PLANING	100 mm W.W.S.	WASTE WATER SEWER	100 mm W.W.S.
	MANHOLE		SIDEWALK	SIDEWALK		WASTE WATER SEWER	
	CATCH BASIN		PAVING STONES	PAVING STONES		WASTE WATER SEWER	
	TEST HOLES		PROPERTY LINE	PROPERTY LINE		WASTE WATER SEWER	
	JUNCTIONS		SURVEY BAR	SURVEY BAR		WASTE WATER SEWER	
	CULVERT		CURB RAMP	CURB RAMP		WASTE WATER SEWER	
	GAS		DITCH	DITCH		WASTE WATER SEWER	
			SWALE	SWALE		WASTE WATER SEWER	
EXISTING	LEGEND-PLAN	PROPOSED	EXISTING	LEGEND-PLAN	PROPOSED	EXISTING	LEGEND-PROFILE

UNDERGROUND STRUCTURES		B.M. 654008 N: 5515764.610 E: 633359.697	B.M. 654210 N: 5514436.957 E: 630550.534
SUPV. U/G STRUCTURES COMMITTEE		DATE	DATE
NOTE:		LOCATION OF UNDERGROUND STRUCTURES AS SHOWN ARE BASED ON THE BEST INFORMATION AVAILABLE BUT NO GUARANTEE IS GIVEN THAT ALL EXISTING UTILITIES ARE SHOWN OR THAT THE GIVEN LOCATIONS ARE EXACT. CONFIRMATION OF EXISTENCE AND EXACT LOCATION OF ALL SERVICES MUST BE OBTAINED FROM THE INDIVIDUAL UTILITIES BEFORE PROCEEDING WITH CONSTRUCTION.	

DESIGNED BY	MRD	DESIGN TEAM	
DRAWN BY	PMW		
CHECKED BY	DBW		
APPROVED BY	DPK		
HOR. SCALE	1:500	RELEASED FOR CONSTRUCTION	
VERTICAL	1:20	DATE	
ISSUED FOR TENDER	13/08/08	DATE	
NO. REVISIONS		DATE	



THE CITY OF WINNIPEG
PUBLIC WORKS DEPARTMENT

Waverly West Arterial Roads Project (WWARP) Part 3 - Contract 2
Route 90 to Route 165 Overpass (Kenaston Blvd.) and Associated Works

PLAN AND PROFILE - BISHOP GRANDIN EB
STA: 6+000 TO 6+338

CITY DRAWING NUMBER: B242-13-93
SHEET 93 OF 128
CONSULTANT DRAWING NUMBER: P-3349-93

CONSULTANT PROJECT NUMBER: 12-6606