

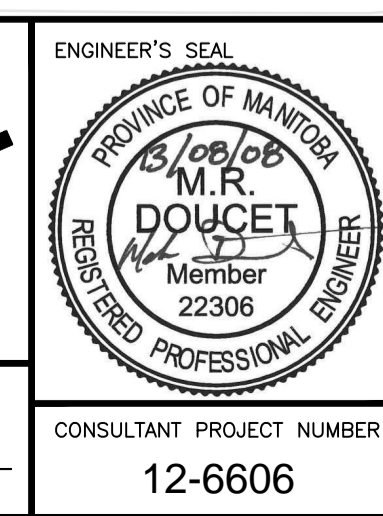
METRIC
WHOLE NUMBERS INDICATE MILLIMETRES
DECIMALIZED NUMBERS INDICATE METRES

- WARNING**
- IF POWER EQUIPMENT OR EXPLOSIVES ARE TO BE USED FOR EXCAVATION ON THIS PROJECT THE CONTRACTOR MUST:
- NOTIFY THE GAS COMPANY OF THE PROPOSED LOCATION OF EXCAVATION.
 - TAKE PRECAUTION TO AVOID DAMAGE TO GAS COMPANY INSTALLATIONS SEE PROVINCIAL REGULATION 210/72 FOR DETAILS.
 - OBTAIN EXCAVATION PERMITS PRIOR TO CONSTRUCTION.
 - A MINIMUM VERTICAL SEPARATION OF 300 mm FROM GAS MAINS AND 100 mm FROM GAS SERVICE MUST BE MAINTAINED BETWEEN ANY MANITOBA HYDRO FACILITY AND ANY NEW INSTALLATIONS.
 - A MINIMUM 900 mm OF COVER SHALL BE MAINTAINED IN ALL AREAS WHERE EQUIPMENT WILL BE CROSSING, TRAVELING OR COMPACTING OVER THE HIGH PRESSURE GAS MAINS.
 - IF EQUIPMENT MUST CROSS, TRAVEL, OR COMPACT OVER THE GAS MAIN WITH LESS THAN THE MINIMUM DEPTH COVER, EARTH BRIDGING OR STEEL PLATES SHALL BE PLACED OVER THE MAIN AND EXTEND A MINIMUM OF 1.0 METRE ON EITHER SIDE AT EACH CROSSING LOCATION.

EXISTING	LEGEND-PLAN	PROPOSED	EXISTING	LEGEND-PLAN	PROPOSED	EXISTING	LEGEND-PROFILE	PROPOSED
150 WM	WATERMAIN	150 WM	MTS	M.T.S.	MTS	150 mm W.M.	WATERMAIN	150 mm W.M.
Hydrant	HYDRANT	Hydrant	Valve	CONCRETE ASPHALT	Valve	Hydrant	HYDRANT	Valve
300 LDS	LAND DRAINAGE SEWER	300 LDS	300 LDS	PLANNING	300 mm L.D.S.	300 LDS	LAND DRAINAGE SEWER	300 mm L.D.S.
250 WWS	WASTE WATER SEWER	250 WWS	250 WWS	SIDEWALK	250 mm W.W.S.	250 WWS	WASTE WATER SEWER	250 mm W.W.S.
Manhole	MANHOLE	Manhole	Manhole	PAVING STONES	Manhole	Manhole	MANHOLE	Manhole
Catch Basin	CATCH BASIN	Catch Basin	Catch Basin	PROPERTY LINE	Catch Basin	Catch Basin	CATCH BASIN	Catch Basin
Test Holes	TEST HOLES	Test Holes	Test Holes	SURVEY BAR	Test Holes	Test Holes	TEST HOLES	Test Holes
Junctions	JUNCTIONS	Junctions	Junctions	CURB RAMP	Junctions	Junctions	JUNCTIONS	Junctions
Culvert	CULVERT	Culvert	Culvert	DITCH	Culvert	Culvert	CULVERT	Culvert
100 GAS	GAS	100 GAS	100 GAS	SWALE	100 GAS	100 GAS	GAS	100 GAS

UNDERGROUND STRUCTURES	B.M.	654008	N: 5515764.610	E: 633359.697	654210	N: 5514436.957	E: 630550.534
DATE							
DATE							
DATE							

DESIGNED BY	MRD
DRAWN BY	PMW
CHECKED BY	DBW
APPROVED BY	DPK
HOR. SCALE	1:500
VERTICAL	1:20
DATE	2013/08/08



THE CITY OF WINNIPEG
PUBLIC WORKS DEPARTMENT

Waverley West Arterial Roads Project (WWARP) Part 3 - Contract 2
Route 90 to Route 165 Overpass (Kenaston Blvd.) and Associated Works

PLAN AND PROFILE - KENASTON EB
STA: 2+010 TO 2+260

CITY DRAWING NUMBER: B242-13-90
SHEET 90 OF 128
CONSULTANT DRAWING NUMBER: P-3349-90

G:\CAD\126606\Contract\Contract_2\Civil\Plan_Profile.dwg