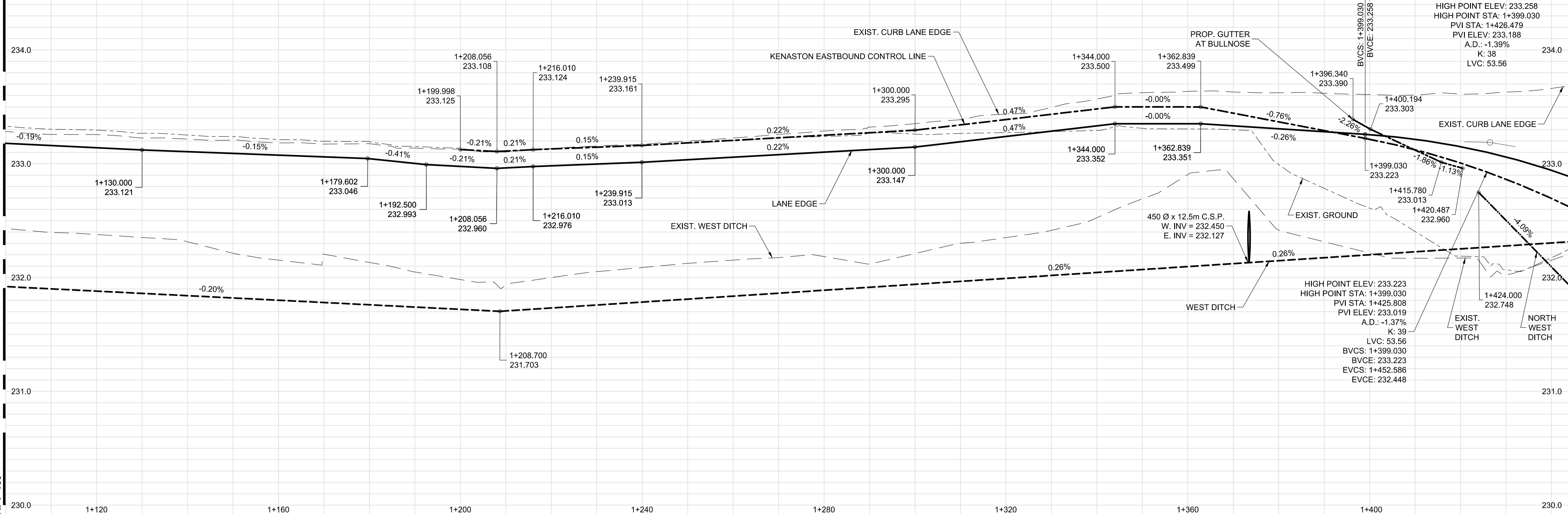
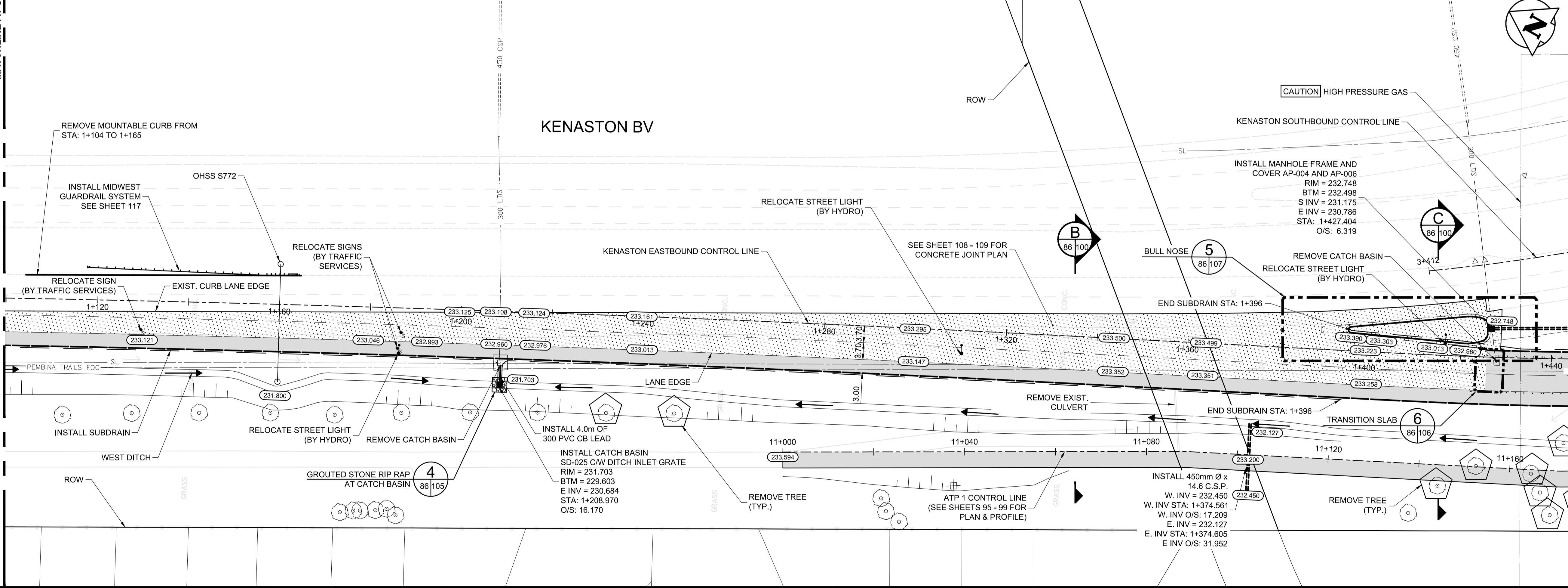


KENASTON EB



KENASTON BV



METRIC

WHOLE NUMBERS INDICATE MILLIMETRES  
DECIMALIZED NUMBERS INDICATE METRES

WARNING

IF POWER EQUIPMENT OR EXPLOSIVES ARE TO BE USED FOR EXCAVATION ON THIS PROJECT THE CONTRACTOR MUST:

1. NOTIFY THE GAS COMPANY OF THE PROPOSED LOCATION OF EXCAVATION.
2. TAKE PRECAUTION TO AVOID DAMAGE TO GAS COMPANY INSTALLATIONS SEE PROVINCIAL REGULATION 210/72 FOR DETAILS.
3. OBTAIN EXCAVATION PERMITS PRIOR TO CONSTRUCTION.
4. A MINIMUM VERTICAL SEPARATION OF 300 mm FROM GAS MAINS AND 100 mm FROM GAS SERVICE MUST BE MAINTAINED BETWEEN ANY MANITOBA HYDRO FACILITY AND ANY NEW INSTALLATIONS.
5. A MINIMUM 900 mm OF COVER SHALL BE MAINTAINED IN ALL AREAS WHERE EQUIPMENT WILL BE CROSSING, TRAVELING OR COMPACTING OVER THE HIGH PRESSURE GAS MAINS.
6. IF EQUIPMENT MUST CROSS, TRAVEL, OR COMPACT OVER THE GAS MAIN WITH LESS THAN THE MINIMUM DEPTH COVER, EARTH BRIDGING OR STEEL PLATES SHALL BE PLACED OVER THE MAIN AND EXTEND A MINIMUM OF 1.0 METRE ON EITHER SIDE AT EACH CROSSING LOCATION.

G:\CAD\126606\Contract\_2\Current\Civil\_Plan\_Profile.dwg

150 WM	WATERMAIN	150 WM	MTS	M.T.S.	150 mm W.M.	WATERMAIN	150 mm W.M.
300 LDS	HYDRANT VALVE	300 LDS	MTS	CONCRETE ASPHALT	300 mm L.D.S.	HYDRANT VALVE	300 mm L.D.S.
250 WWS	LAND DRAINAGE SEWER	250 WWS	MTS	PLANING	250 mm W.W.S.	WASTE WATER SEWER	250 mm W.W.S.
100 GAS	WASTE WATER SEWER	100 GAS	MTS	SIDEWALK	100 mm W.W.S.	MANHOLE	100 mm W.W.S.
	MANHOLE		MTS	PAVING STONES		CATCH BASIN	
	CATCH BASIN		MTS	PROPERTY LINE		TEST HOLES	
	TEST HOLES		MTS	SURVEY BAR		JUNCTIONS	
	JUNCTIONS		MTS	CURB RAMP		CULVERT	
	CULVERT		MTS	DITCH		100 GAS	
	100 GAS		MTS	SWALE		EXISTING	
	EXISTING		MTS	LEGEND-PLAN		PROPOSED	
	LEGEND-PLAN		MTS	LEGEND-PROFILE		PROPOSED	

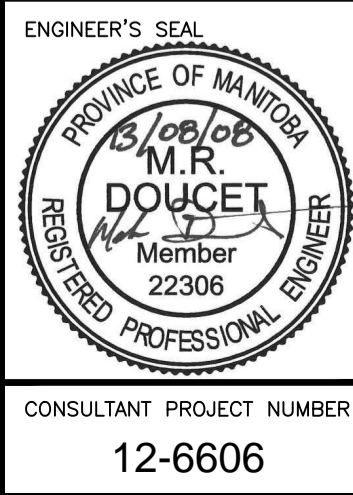
**UNDERGROUND STRUCTURES**

SUPV. U/G STRUCTURES COMMITTEE DATE

NOTE:  
LOCATION OF UNDERGROUND STRUCTURES AS SHOWN ARE BASED ON THE BEST INFORMATION AVAILABLE BUT NO GUARANTEE IS GIVEN THAT ALL EXISTING UTILITIES ARE SHOWN OR THAT THE GIVEN LOCATIONS ARE EXACT. CONFIRMATION OF EXISTENCE AND EXACT LOCATION OF ALL SERVICES MUST BE OBTAINED FROM THE INDIVIDUAL UTILITIES BEFORE PROCEEDING WITH CONSTRUCTION.

B.M. 654008	N: 5515764.610	654210	N: 5514436.957
ELEV. 232.463 m	E: 633359.697	ELEV. 232.463 m	E: 630550.534

DESIGNED BY	MRD
DRAWN BY	PMW
CHECKED BY	DBW
APPROVED BY	DPK
HOR. SCALE	1:500
VERTICAL	1:20
ISSUED FOR TENDER	13/08/08 MRD
NO. REVISIONS	DATE BY



**THE CITY OF WINNIPEG**  
PUBLIC WORKS DEPARTMENT

Waverley West Arterial Roads Project (WWARP) PART 3 - CONTRACT 2  
ROUTE 90 TO ROUTE 165 OVERPASS (KENASTON BLVD.) AND ASSOCIATED WORKS

PLAN AND PROFILE - KENASTON EB  
STA: 1+100 TO 1+440

CITY DRAWING NUMBER: B242-13-86  
SHEET 86 OF 128  
CONSULTANT DRAWING NUMBER: P-3349-86

CONSULTANT PROJECT NUMBER: 12-6606