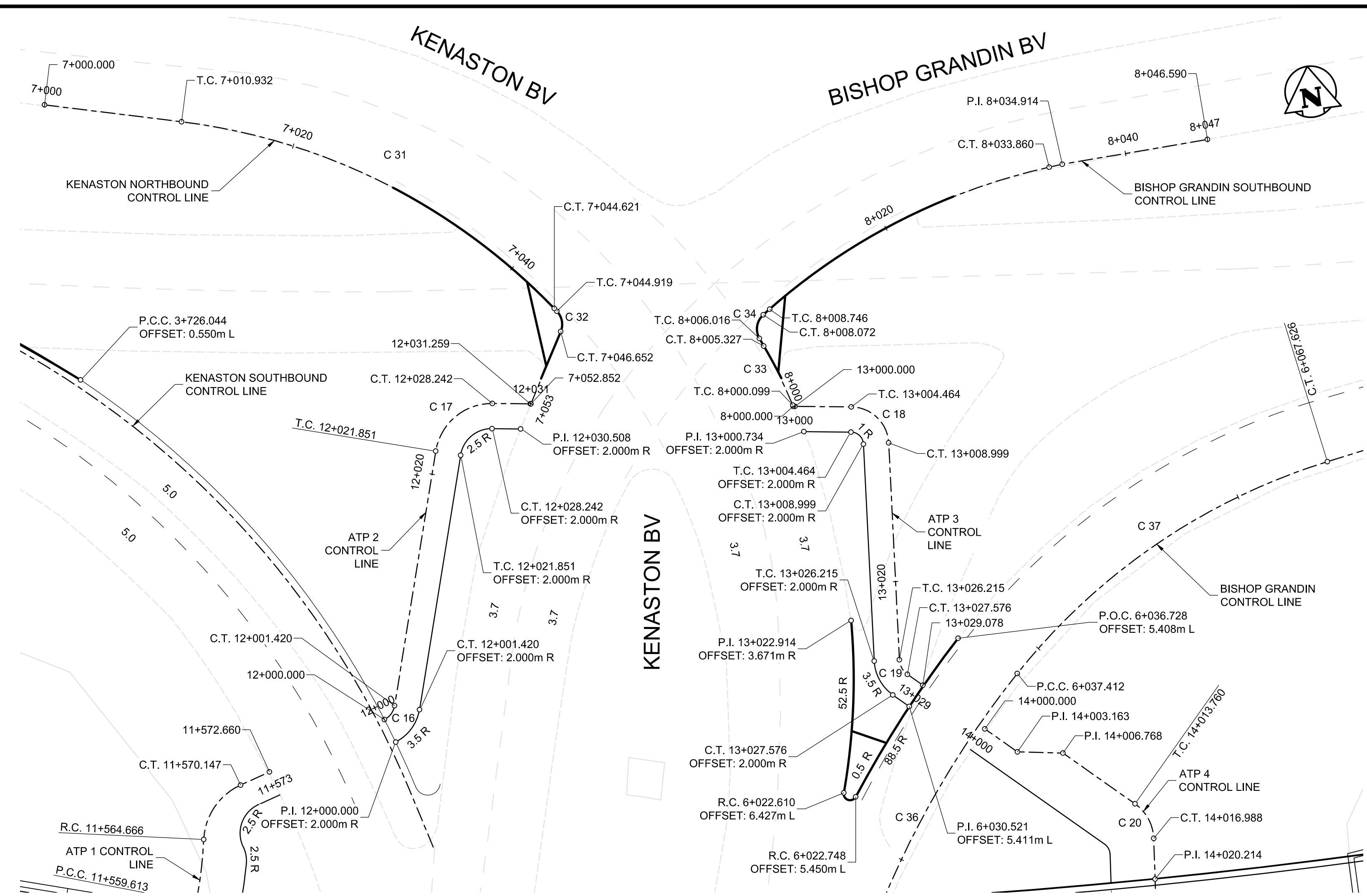
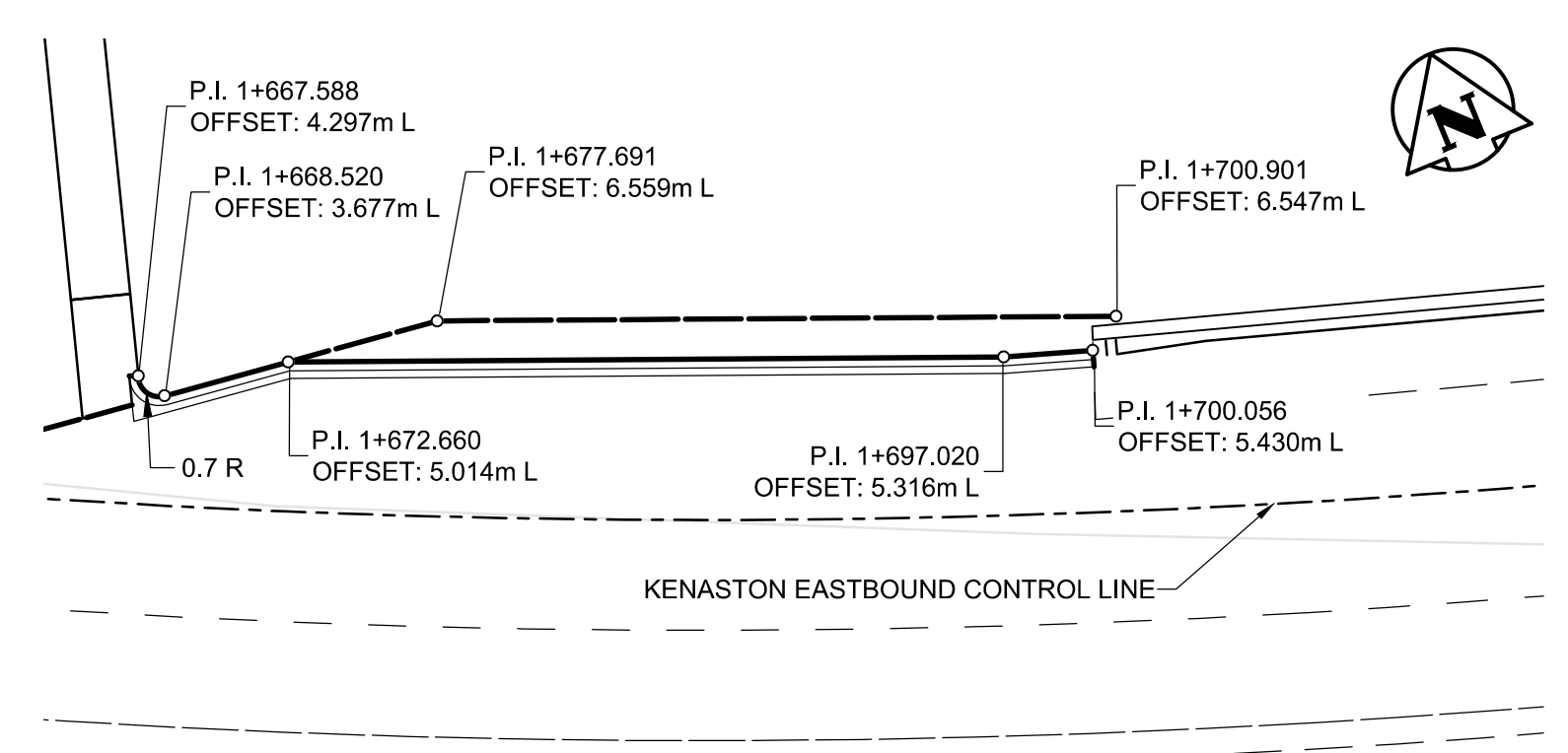


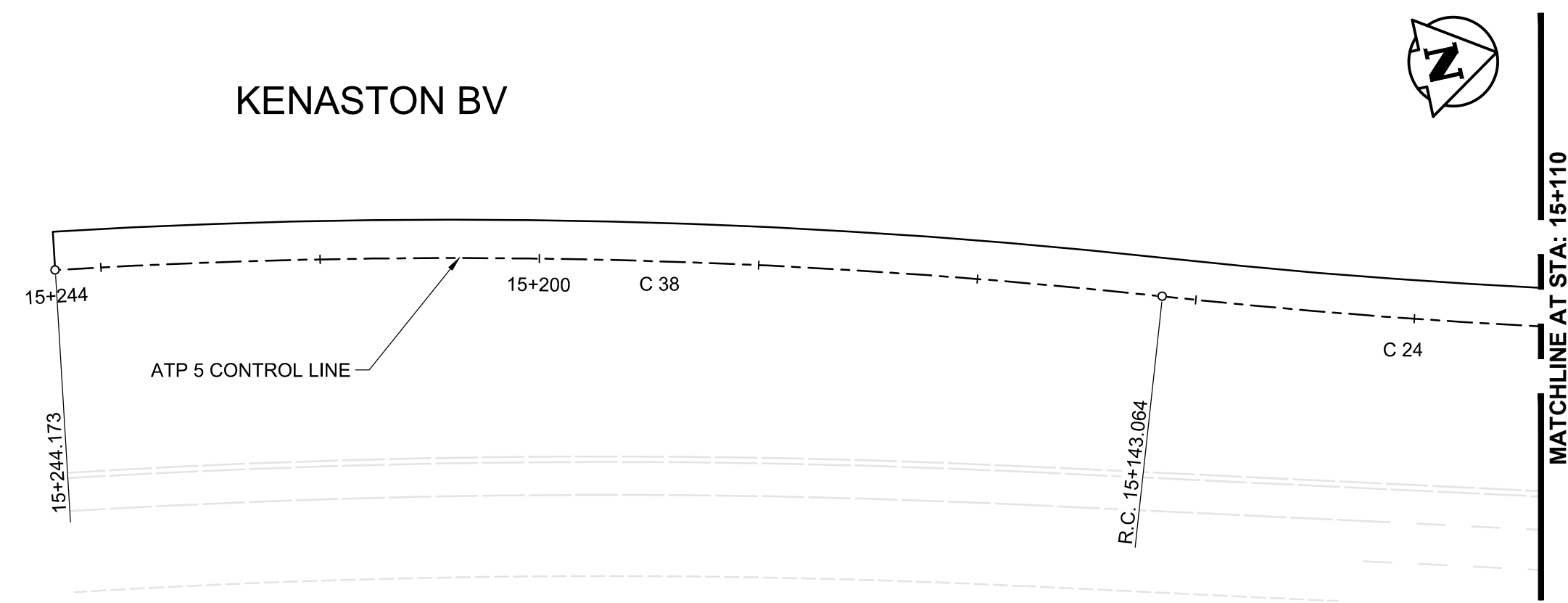
1 BULLNOSE
SCALE HORZ 1:250



2 ATP AT INTERSECTION
SCALE HORZ 1:250



3 WEST END CURB
SCALE HORZ 1:250



ATP 5 CONTROL LINE

CONTROL POINT	STATION	COORDINATES		CURVE TABLE ALIGNMENTS						
		NORTHING	EASTING	CURVE #	RADIUS	DELTA	Tc	L	LC	
P.I.	15+000	5519004.608	630235.151	C 23	8064	0°39'39"	46.507	93.013	93.012	
R.C.	15+008.740	5518996.854	630231.272	C 24	600	3°56'42"	20.664	41.311	41.303	
P.C.C.	15+101.753	5518906.760	630208.155	C 38	600	9°39'19"	50.675	101.109	100.990	
R.C.	15+143.064	5518867.198	630196.290							
P.I.	15+244.173	5518769.140	630172.134							

ALL COORDINATES BASED ON A LOCAL SYSTEM

APEGM
Certificate of Authorization
Dillon Consulting Limited (MB)
No. 1789 Date: 2013/08/08

METRIC
WHOLE NUMBERS INDICATE MILLIMETRES
DECIMALIZED NUMBERS INDICATE METRES

- WARNING**
- IF POWER EQUIPMENT OR EXPLOSIVES ARE TO BE USED FOR EXCAVATION ON THIS PROJECT THE CONTRACTOR MUST:
- NOTIFY THE GAS COMPANY OF THE PROPOSED LOCATION OF EXCAVATION.
 - TAKE PRECAUTION TO AVOID DAMAGE TO GAS COMPANY INSTALLATIONS SEE PROVINCIAL REGULATION 210/72 FOR DETAILS.
 - OBTAIN EXCAVATION PERMITS PRIOR TO CONSTRUCTION.
 - A MINIMUM VERTICAL SEPARATION OF 300 mm FROM GAS MAINS AND 100 mm FROM GAS SERVICE MUST BE MAINTAINED BETWEEN ANY MANITOBA HYDRO FACILITY AND ANY NEW INSTALLATIONS.
 - A MINIMUM 900 mm OF COVER SHALL BE MAINTAINED IN ALL AREAS WHERE EQUIPMENT WILL BE CROSSING, TRAVELING OR COMPACTING OVER THE HIGH PRESSURE GAS MAINS.
 - IF EQUIPMENT MUST CROSS, TRAVEL, OR COMPACT OVER THE GAS MAIN WITH LESS THAN THE MINIMUM DEPTH COVER, EARTH BRIDGING OR STEEL PLATES SHALL BE PLACED OVER THE MAIN AND EXTEND A MINIMUM OF 1.0 METRE ON EITHER SIDE AT EACH CROSSING LOCATION.

150 WM	WATERMAIN	150 WM	M.T.S.	M.T.S.	150 mm W.M.	WATERMAIN	150 mm W.M.
	HYDRANT VALVE		CONCRETE		ASPHALT		HYDRANT VALVE
	LAND DRAINAGE SEWER		PLANNING		SIDEWALK		LAND DRAINAGE SEWER
	WASTE WATER SEWER		PAVING STONES		PROPERTY LINE		WASTE WATER SEWER
	MANHOLE		SURVEY BAR		CURB RAMP		NORTH/WEST GUTTER
	CATCH BASIN		NORTH/WEST T/LANE		NORTH/WEST T/LANE		SOUTH/EAST T/LANE
	TEST HOLES		DITCH		DITCH		DITCH
	JUNCTIONS		SWALE		SWALE		SWALE
	CULVERT						
	GAS						
	EXISTING		PROPOSED		EXISTING		PROPOSED

UNDERGROUND STRUCTURES

SUPV. U/G STRUCTURES COMMITTEE DATE

NOTE:
LOCATION OF UNDERGROUND STRUCTURES AS SHOWN ARE BASED ON THE BEST INFORMATION AVAILABLE. BUT NO GUARANTEE IS GIVEN THAT ALL EXISTING UTILITIES ARE SHOWN OR THAT THE GIVEN LOCATIONS ARE EXACT. CONFIRMATION OF EXISTENCE AND EXACT LOCATION OF ALL SERVICES MUST BE OBTAINED FROM THE INDIVIDUAL UTILITIES BEFORE PROCEEDING WITH CONSTRUCTION.

B.M. 654008 N: 5515764.610 E: 633359.697	654210 N: 5514436.957 E: 630550.534	DESIGNED BY MRD	DESIGN TEAM
ELEV. 232.463 m	ELEV. ---	DRAWN BY PMW	
		CHECKED BY DBW	
		APPROVED BY DPK	REGISTERED PROFESSIONAL ENGINEER
		HOR. SCALE 1:500	CONSULTANT PROJECT NUMBER 12-6606
		RELEASED FOR CONSTRUCTION	
		VERTICAL	
		0 ISSUED FOR TENDER 13/08/08 MRD	
		NO. REVISIONS	DATE BY
			2013/08/08

DESIGNED BY MRD	DESIGN TEAM
DRAWN BY PMW	
CHECKED BY DBW	
APPROVED BY DPK	REGISTERED PROFESSIONAL ENGINEER
HOR. SCALE 1:500	CONSULTANT PROJECT NUMBER 12-6606
RELEASED FOR CONSTRUCTION	
VERTICAL	
0 ISSUED FOR TENDER 13/08/08 MRD	
NO. REVISIONS	DATE BY
	2013/08/08

THE CITY OF WINNIPEG PUBLIC WORKS DEPARTMENT

WAVERLEY WEST ARTERIAL ROADS PROJECT (WWARP) PART 3 - CONTRACT 2 ROUTE 90 TO ROUTE 165 OVERPASS (KENASTON BLVD.) AND ASSOCIATED WORKS

CITY DRAWING NUMBER B242-13-84
SHEET 84 OF 128
CONSULTANT DRAWING NUMBER P-3349-84

G:\CAD\126606\Contract\Control_2\Civil\Control_Line_Geometry.dwg