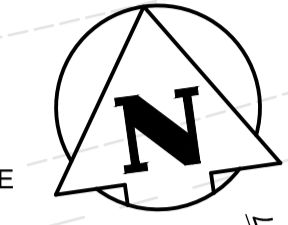
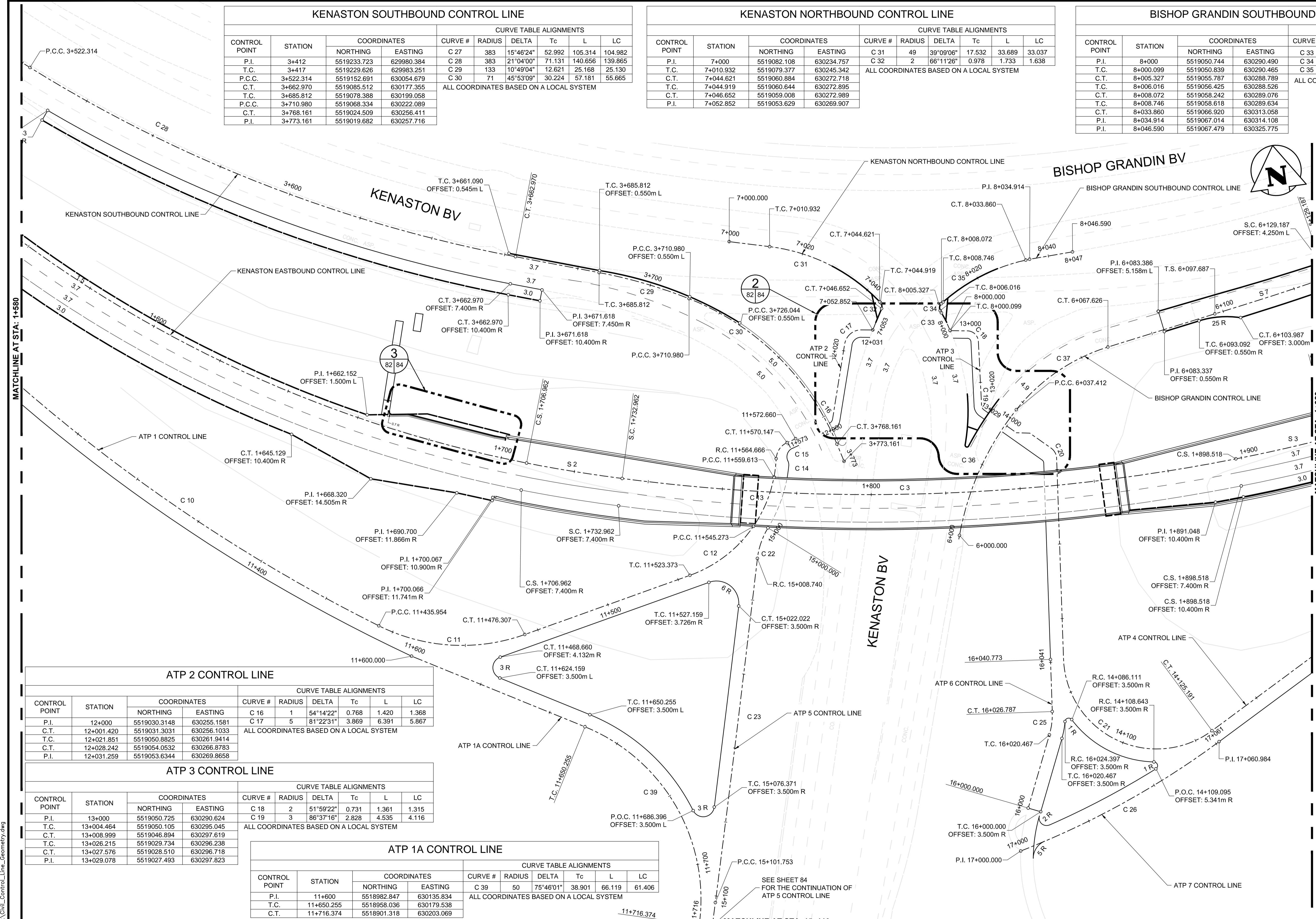


KENASTON SOUTHBOUND CONTROL LINE									
CONTROL POINT	STATION	COORDINATES		CURVE TABLE ALIGNMENTS					
		NORTHING	EASTING	CURVE #	RADIUS	DELTA	Tc	L	LC
P.I.	3+412	5519233.723	629980.384	C 27	383	15°46'24"	52.992	105.314	104.982
T.C.	3+417	5519229.626	629983.251	C 28	383	21°04'00"	71.131	140.656	139.865
P.C.C.	3+522.314	5519152.691	630054.679	C 29	133	10°49'04"	12.621	25.168	25.130
C.T.	3+662.970	5519085.512	630177.355	C 30	71	45°53'09"	30.224	57.181	55.665
T.C.	3+685.812	5519078.388	630199.058	ALL COORDINATES BASED ON A LOCAL SYSTEM					
P.C.C.	3+710.980	5519068.334	630222.089						
C.T.	3+768.161	5519024.509	630256.411						
P.I.	3+773.161	5519019.682	630257.716						

KENASTON NORTHBOUND CONTROL LINE									
CONTROL POINT	STATION	COORDINATES		CURVE TABLE ALIGNMENTS					
		NORTHING	EASTING	CURVE #	RADIUS	DELTA	Tc	L	LC
P.I.	7+000	5519082.108	630234.757	C 31	49	39°09'06"	17.532	33.689	33.037
T.C.	7+010.932	5519079.377	630245.342	C 32	2	66°11'26"	0.978	1.733	1.638
C.T.	7+044.621	5519060.884	630272.718	ALL COORDINATES BASED ON A LOCAL SYSTEM					
T.C.	7+044.919	5519060.644	630272.895						
C.T.	7+046.652	5519059.008	630272.989						
P.I.	7+052.852	5519053.629	630269.907						

BISHOP GRANDIN SOUTHBOUND CONTROL LINE									
CONTROL POINT	STATION	COORDINATES		CURVE TABLE ALIGNMENTS					
		NORTHING	EASTING	CURVE #	RADIUS	DELTA	Tc	L	LC
P.I.	8+000	5519050.744	630290.490	C 33	40	7°29'19"	2.618	5.228	5.224
T.C.	8+000.099	5519050.839	630290.465	C 34	2	78°32'29"	1.226	2.056	1.899
C.T.	8+005.327	5519055.787	630288.789	C 35	50	28°46'44"	12.828	25.114	24.851
T.C.	8+006.016	5519056.425	630288.526	ALL COORDINATES BASED ON A LOCAL SYSTEM					
C.T.	8+008.072	5519058.242	630289.076						
T.C.	8+006.016	5519058.618	630289.634						
C.T.	8+033.860	5519066.920	630313.058						
P.I.	8+034.914	5519067.014	630314.108						
P.I.	8+046.590	5519067.479	630325.775						



MATCHLINE AT STA: 1+580

MATCHLINE AT STA: 1+920

ATP 2 CONTROL LINE									
CONTROL POINT	STATION	COORDINATES		CURVE TABLE ALIGNMENTS					
		NORTHING	EASTING	CURVE #	RADIUS	DELTA	Tc	L	LC
P.I.	12+000	5519030.3148	630255.1581	C 16	1	54°14'22"	0.768	1.420	1.368
C.T.	12+001.420	5519031.3031	630256.1033	C 17	5	81°22'31"	3.869	6.391	5.867
T.C.	12+021.851	5519050.8825	630261.9414	ALL COORDINATES BASED ON A LOCAL SYSTEM					
C.T.	12+028.242	5519054.0532	630266.8783						
P.I.	12+031.259	5519053.6344	630269.8658						

ATP 3 CONTROL LINE									
CONTROL POINT	STATION	COORDINATES		CURVE TABLE ALIGNMENTS					
		NORTHING	EASTING	CURVE #	RADIUS	DELTA	Tc	L	LC
P.I.	13+000	5519050.725	630290.624	C 18	2	51°59'22"	0.731	1.361	1.315
T.C.	13+004.464	5519050.105	630295.045	C 19	3	86°37'16"	2.828	4.535	4.116
C.T.	13+008.999	5519046.894	630297.619	ALL COORDINATES BASED ON A LOCAL SYSTEM					
T.C.	13+026.215	5519029.734	630296.238						
C.T.	13+027.576	5519028.510	630296.718						
P.I.	13+029.078	5519027.493	630297.823						

ATP 1A CONTROL LINE									
CONTROL POINT	STATION	COORDINATES		CURVE TABLE ALIGNMENTS					
		NORTHING	EASTING	CURVE #	RADIUS	DELTA	Tc	L	LC
P.I.	11+600	5518982.847	630135.834	C 39	50	75°48'01"	38.901	66.119	61.406
T.C.	11+650.255	5518958.036	630179.538	ALL COORDINATES BASED ON A LOCAL SYSTEM					
C.T.	11+716.374	5518901.318	630203.069						

APEGM
Certificate of Authorization
Dillon Consulting Limited (MB)
No. 1789 Date: 2013/08/08

METRIC
WHOLE NUMBERS INDICATE MILLIMETRES
DECIMALIZED NUMBERS INDICATE METRES

- WARNING**
- IF POWER EQUIPMENT OR EXPLOSIVES ARE TO BE USED FOR EXCAVATION ON THIS PROJECT THE CONTRACTOR MUST:
- NOTIFY THE GAS COMPANY OF THE PROPOSED LOCATION OF EXCAVATION.
 - TAKE PRECAUTION TO AVOID DAMAGE TO GAS COMPANY INSTALLATIONS SEE PROVINCIAL REGULATION 210/72 FOR DETAILS.
 - OBTAIN EXCAVATION PERMITS PRIOR TO CONSTRUCTION.
 - A MINIMUM VERTICAL SEPARATION OF 300 mm FROM GAS MAINS AND 100 mm FROM GAS SERVICE MUST BE MAINTAINED BETWEEN ANY MANITOBA HYDRO FACILITY AND ANY NEW INSTALLATIONS.
 - A MINIMUM 900 mm OF COVER SHALL BE MAINTAINED IN ALL AREAS WHERE EQUIPMENT WILL BE CROSSING, TRAVELING OR COMPACTING OVER THE HIGH PRESSURE GAS MAINS.
 - IF EQUIPMENT MUST CROSS, TRAVEL, OR COMPACT OVER THE GAS MAIN WITH LESS THAN THE MINIMUM DEPTH COVER, EARTH BRIDGING OR STEEL PLATES SHALL BE PLACED OVER THE MAIN AND EXTEND A MINIMUM OF 1.0 METRE ON EITHER SIDE AT EACH CROSSING LOCATION.

150 W.M.	WATERMAIN	150 W.M.	M.T.S.	M.T.S.	150 mm W.M.	WATERMAIN	150 mm W.M.
+	HYDRANT VALVE	+	CONCRETE ASPHALT	+	+	HYDRANT VALVE	+
300 L.D.S.	LAND DRAINAGE SEWER	300 L.D.S.	PLANNING	300 mm L.D.S.	300 mm L.D.S.	LAND DRAINAGE SEWER	300 mm L.D.S.
250 W.W.S.	WASTE WATER SEWER	250 W.W.S.	SIDEWALK	250 mm W.W.S.	250 mm W.W.S.	WASTE WATER SEWER	250 mm W.W.S.
○	MANHOLE	○	PAVING STONES	○	○	Q PROFILE	○
○	CATCH BASIN	○	PROPERTY LINE	○	○	NORTH/WEST GUTTER	○
○	TEST HOLES	○	SURVEY BAR	○	○	SOUTH/EAST GUTTER	○
○	JUNCTIONS	○	CURB RAMP	○	○	NORTH/WEST T/LANE	○
○	CULVERT	○	DITCH	○	○	SOUTH/EAST T/LANE	○
○	GAS	○	SWALE	○	○		○
○	EXISTING	○	LEGEND-PLAN	○	○	LEGEND-PROFILE	○
○	PROPOSED	○	PROPOSED	○	○	PROPOSED	○

<p>UNDERGROUND STRUCTURES</p> <p>SUPV. U/G STRUCTURES COMMITTEE DATE</p> <p>NOTE: LOCATION OF UNDERGROUND STRUCTURES AS SHOWN ARE BASED ON THE BEST INFORMATION AVAILABLE BUT NO GUARANTEE IS GIVEN THAT ALL EXISTING UTILITIES ARE SHOWN OR THAT THE GIVEN LOCATIONS ARE EXACT. CONFIRMATION OF EXISTENCE AND EXACT LOCATION OF ALL SERVICES MUST BE OBTAINED FROM THE INDIVIDUAL UTILITIES BEFORE PROCEEDING WITH CONSTRUCTION.</p>	<p>B.M. 654008 N: 5515764.610 E: 633359.697</p> <p>654210 N: 5514436.957 E: 630550.534</p> <p>DESIGNED BY MRD</p> <p>DRAWN BY PMW</p> <p>CHECKED BY DBW</p> <p>APPROVED BY DPK</p> <p>HOR. SCALE 1:500</p> <p>VERTICAL</p> <p>ISSUED FOR TENDER 13/08/08 MRD</p> <p>NO. REVISIONS DATE BY</p>	<p>DESIGN TEAM</p> <p>DILLON CONSULTING</p> <p>RELEASED FOR CONSTRUCTION</p> <p>CONSULTANT PROJECT NUMBER 12-6606</p>	<p>ENGINEER'S SEAL</p> <p>PROVINCE OF MANITOBA M.R. DOUCET Member 22306 REGISTERED PROFESSIONAL ENGINEER</p> <p>THE CITY OF WINNIPEG PUBLIC WORKS DEPARTMENT</p> <p>WAVERLEY WEST ARTERIAL ROADS PROJECT (WWARP) PART 3 - CONTRACT 2 ROUTE 90 TO ROUTE 165 OVERPASS (KENASTON BLVD.) AND ASSOCIATED WORKS</p> <p>CITY DRAWING NUMBER B242-13-82</p> <p>SHEET 82 OF 128</p> <p>CONSULTANT DRAWING NUMBER P-3349-82</p>
---	---	--	---

G:\CAD\126606\Contract_2\Curren\Civil_Control_Line_Geometry.dwg