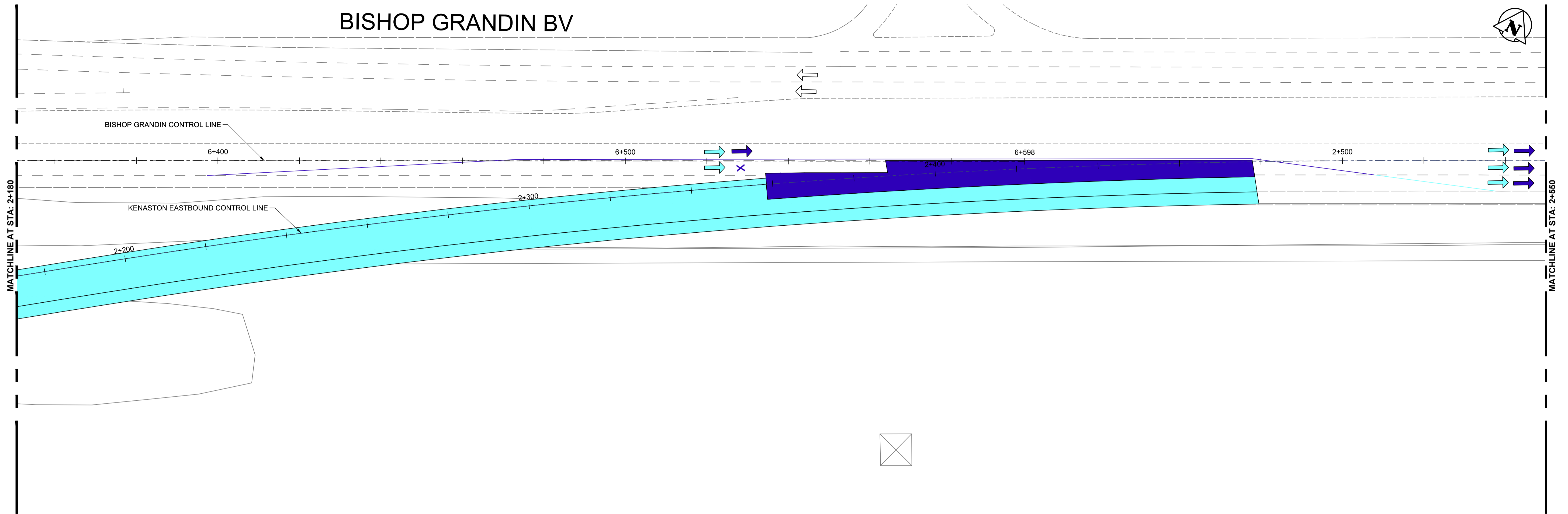
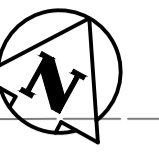


# BISHOP GRANDIN BV



**APEGM**  
 Certificate of Authorization  
**Dillon Consulting Limited (MB)**  
 No. 1789 Date: 2013/08/08

PVT. REM.	NEW PVT.	TEMP. PVT.	STAGE	TRAFFIC LANE	LANE EDGE	LANE CLOSED
[Symbol]	[Symbol]	[Symbol]	STAGE 1A	[Symbol]	[Symbol]	[Symbol]
[Symbol]	[Symbol]	[Symbol]	STAGE 1B	[Symbol]	[Symbol]	[Symbol]
[Symbol]	[Symbol]	[Symbol]	STAGE 2A	[Symbol]	[Symbol]	[Symbol]
[Symbol]	[Symbol]	[Symbol]	STAGE 2B	[Symbol]	[Symbol]	[Symbol]
[Symbol]	[Symbol]	[Symbol]	STAGE 2C	[Symbol]	[Symbol]	[Symbol]
[Symbol]	[Symbol]	[Symbol]	STAGE 2D	[Symbol]	[Symbol]	[Symbol]

- GENERAL NOTES - ALL STAGES**
- CONTRACTOR RESPONSIBLE FOR ALL CONSTRUCTION SIGNING AND BARRICADES WITHIN THE AREA UNDER CONSTRUCTION AND TRAFFIC CONTROL INCLUDING INSTALLATION OF POLY POST LANE DELINEATION AND ADVANCE WARNING SIGNAGE.
  - MAINTAIN ACCESS FOR EMERGENCY VEHICLES.
  - AT THE KENASTON AND SCURFIELD INTERSECTION MAINTAIN AT LEAST ONE PEDESTRIAN CROSSING NORTH-SOUTH ALONG KENASTON AND ONE PEDESTRIAN CROSSING EAST-WEST ALONG SCURFIELD AT ALL TIMES.
  - MULTI-USE PATH BETWEEN SCURFIELD AND ENTRANCE TO BRIDGWATER FOREST CLOSED FOR DURATION OF PROJECT.
  - UTILIZE TEMPORARY PUMPING OR OTHER METHODS TO DRAIN DITCHES AS NECESSARY DURING STAGING.
  - EXISTING ASPHALT OVERLAY AT BISHOP GRANDIN AND KENASTON INTERSECTION COMPRISED OF 100mm ASPHALT AND 0-500mm GRANULAR BASE COURSE OVER CONCRETE PAVEMENT.
  - ALTERATIONS TO THE STAGING SHOWN HEREIN MUST BE PRESENTED AND APPROVED IN WRITING BY THE CONTRACT ADMINISTRATOR AT LEAST TWO DAYS PRIOR TO IMPLEMENTING CHANGE.
  - STAGE 1B CAN BE CONSTRUCTED CONCURRENTLY WITH STAGE 1A. STAGE 1A AND 1B MUST BE COMPLETE BEFORE OPENING THE FLYOVER TO TRAFFIC.
  - STAGE 2 MAY NOT COMMENCE UNTIL STAGE 1 IS COMPLETE. PORTIONS OF STAGE 2A, 2B, 2C AND 2D CAN BE CONSTRUCTED CONCURRENTLY, NOTING REQUIRED TRAFFIC CONTROL.

- MAJOR CONSTRUCTION ACTIVITIES - STAGE 1**
- STAGE 1A**
- FLYOVER STRUCTURE.
  - RAMP LANES TO AND FROM FLYOVER WHICH WILL MAINTAIN TWO LANES FOR SB TO EB DIRECTION.
  - OVERHEAD SIGN STRUCTURES AND GUARDRAIL.
- STAGE 1B**
- FLYOVER STRUCTURE.
  - RAMP LANES TO AND FROM FLYOVER WHICH WILL REQUIRE CLOSURE OF ONE LANE IN SB TO EB DIRECTION.
  - TEMPORARY WIDENING FOR EB TO SB RAMP.
  - TEMPORARY WIDENING AT BEGINNING OF NB TO EB RAMP.

- TRAFFIC CONTROL - STAGE 1**
- STAGE 1A**
- KENASTON SB TO BISHOP GRANDIN EB - TWO LANES MAINTAINED.
  - KENASTON NB AND SB - ONE LANE CLOSED ADJACENT TO FLYOVER CENTRE PIER.
  - CLOSE EITHER ALL NB LANES OR ALL SB LANES ON WEEKENDS TO FACILITATE OVERHEAD GIRDER ERECTION. CLOSURES TO TAKE PLACE ON WEEKENDS FROM FRIDAYS AT 1800 HR TO MONDAY AT 0600 HR. NB AND SB LANES CANNOT BE CLOSED ON THE SAME WEEKEND.
- STAGE 1B**
- KENASTON SB STA 0+980 TO 1+440 - REDUCED TO ONE LANE, EXCEPT BETWEEN 1500 HR TO 1800 HR FOR UP TO 15 CONSECUTIVE CALENDAR DAYS.
  - BISHOP GRANDIN EB STA 6+400 TO 2+540 - REDUCED TO ONE LANE FOR UP TO 10 CONSECUTIVE CALENDAR DAYS.
  - KENASTON NB AND SB - ONE LANE CLOSED ADJACENT TO FLYOVER CENTRE PIER.
  - KENASTON EB TO SB - ONE LANE MAINTAINED.
  - KENASTON NB TO BISHOP GRANDIN EB RIGHT TURN CUTOFF - MAINTAIN ONE LANE OF TRAFFIC DURING TEMPORARY PAVEMENT WIDENING CONSTRUCTION (ALTERNATIVELY, CONSTRUCT AT BEGINNING OF STAGE 2A).

G:\CAD\126606\Contract\2\Current\Civil\Staging.dwg

150 WM	WATERMAIN	150 WM	MTS	M.T.S.	150 mm W.M.	WATERMAIN	150 mm W.M.
[Symbol]	HYDRANT	[Symbol]	[Symbol]	CONCRETE	[Symbol]	HYDRANT	[Symbol]
[Symbol]	VALVE	[Symbol]	[Symbol]	ASPHALT	[Symbol]	VALVE	[Symbol]
[Symbol]	LAND DRAINAGE SEWER	[Symbol]	[Symbol]	PLANING	[Symbol]	LAND DRAINAGE SEWER	[Symbol]
[Symbol]	WASTE WATER SEWER	[Symbol]	[Symbol]	SIDEWALK	[Symbol]	WASTE WATER SEWER	[Symbol]
[Symbol]	MANHOLE	[Symbol]	[Symbol]	PAVING STONES	[Symbol]	Q PROFILE	[Symbol]
[Symbol]	CATCH BASIN	[Symbol]	[Symbol]	PROPERTY LINE	[Symbol]	NORTH/WEST GUTTER	[Symbol]
[Symbol]	TEST HOLES	[Symbol]	[Symbol]	SURVEY BAR	[Symbol]	SOUTH/EAST GUTTER	[Symbol]
[Symbol]	JUNCTIONS	[Symbol]	[Symbol]	CURB RAMP	[Symbol]	NORTH/WEST T/LANE	[Symbol]
[Symbol]	CULVERT	[Symbol]	[Symbol]	DITCH	[Symbol]	SOUTH/EAST T/LANE	[Symbol]
[Symbol]	GAS	[Symbol]	[Symbol]	SWALE	[Symbol]		
[Symbol]	EXISTING	[Symbol]	[Symbol]		[Symbol]		

<b>UNDERGROUND STRUCTURES</b> SUPV. U/G STRUCTURES COMMITTEE DATE _____ NOTE: LOCATION OF UNDERGROUND STRUCTURES AS SHOWN ARE BASED ON THE BEST INFORMATION AVAILABLE. BUT NO GUARANTEE IS GIVEN THAT ALL EXISTING UTILITIES ARE SHOWN OR THAT THE GIVEN LOCATIONS ARE EXACT. CONFIRMATION OF EXISTENCE AND EXACT LOCATION OF ALL SERVICES MUST BE OBTAINED FROM THE INDIVIDUAL UTILITIES BEFORE PROCEEDING WITH CONSTRUCTION.		B.M. 654008 N: 5515764.610 E: 633359.697 ELEV. 232.463 m	654210 N: 5514436.957 E: 630550.534 ELEV. _____	DESIGNED BY: RG DRAWN BY: RG CHECKED BY: DBW APPROVED BY: DPK	DESIGN TEAM 	ENGINEER'S SEAL 	
0 ISSUED FOR TENDER NO. REVISIONS		13/08/08 DATE	MRD BY	2013/08/08 DATE	RELEASED FOR CONSTRUCTION DATE	CONSULTANT PROJECT NUMBER 12-6606	CITY DRAWING NUMBER B242-13-68 SHEET OF 68 OF 128 CONSULTANT DRAWING NUMBER P-3349-68

**THE CITY OF WINNIPEG**  
 PUBLIC WORKS DEPARTMENT

WAVERLEY WEST ARTERIAL ROADS PROJECT  
 (WWARP) PART 3 - CONTRACT 2  
 ROUTE 90 TO ROUTE 165 OVERPASS (KENASTON BLVD.)  
 AND ASSOCIATED WORKS

TRAFFIC STAGING  
 STAGE 1 - STA 2+180 TO 2+550