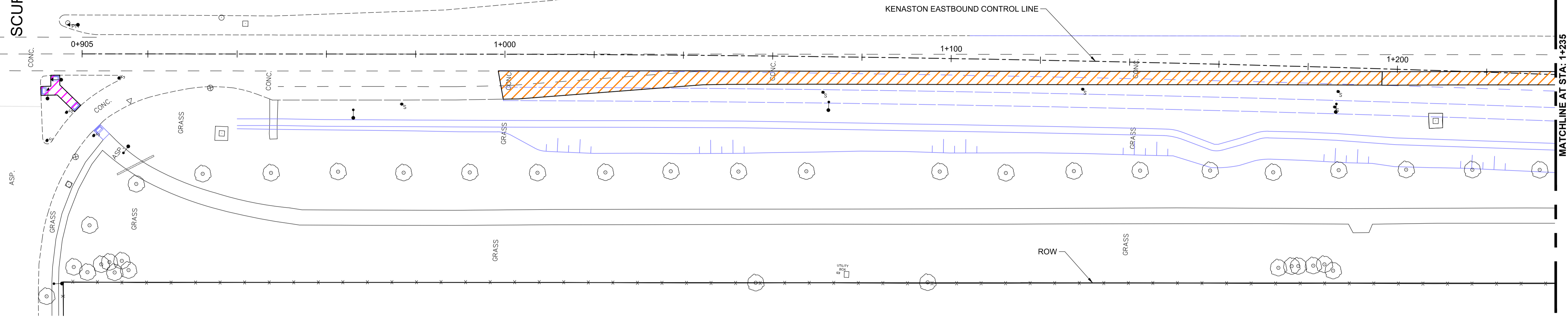
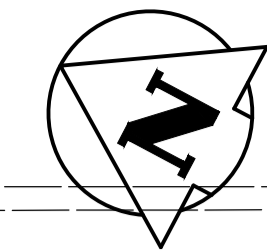
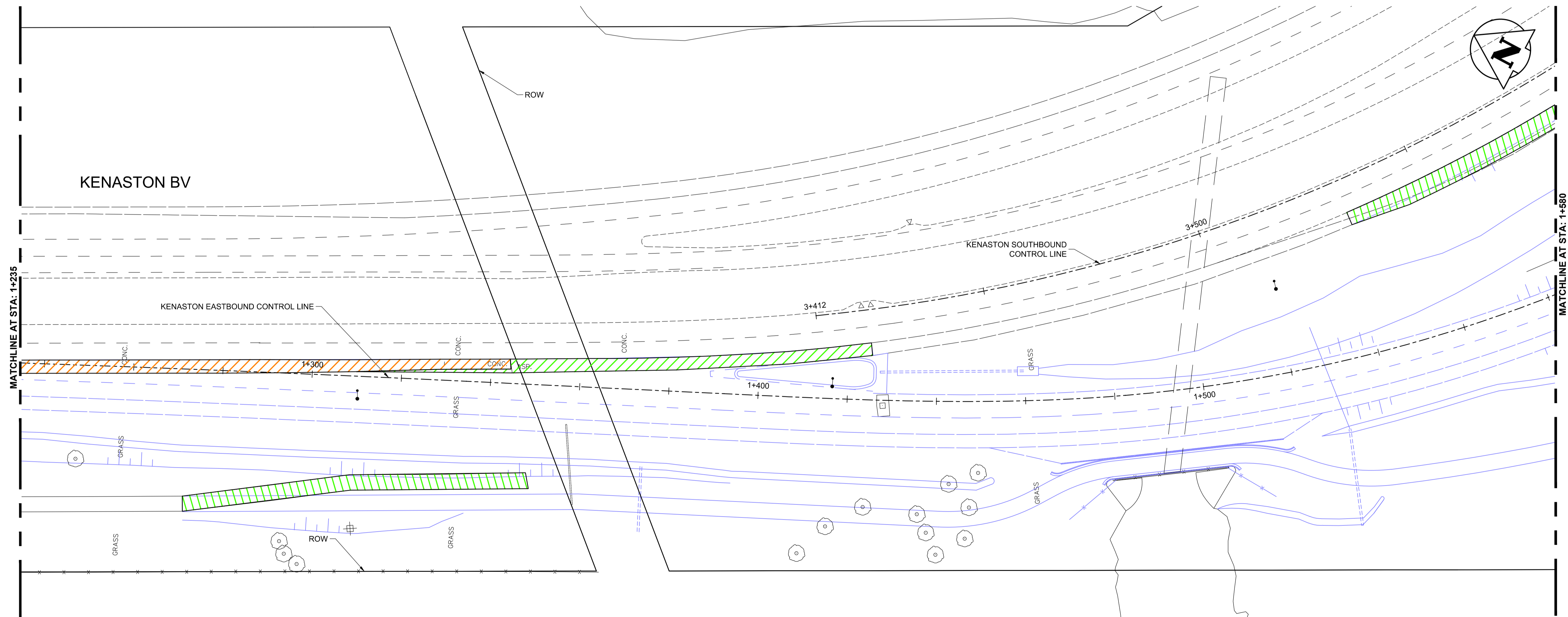


KENASTON BV

SCURFIELD BV



MATCHLINE AT STA: 1+235



MATCHLINE AT STA: 1+580

**REMOVALS LEGEND**

REMOVE CONCRETE	
REMOVE ASPHALT	
REMOVE PAVING STONES	

**APEGM**  
 Certificate of Authorization  
 Dillon Consulting Limited (MB)  
 No. 1789 Date: 2013/08/08

**METRIC**  
 WHOLE NUMBERS INDICATE MILLIMETRES  
 DECIMALIZED NUMBERS INDICATE METRES

- WARNING**
- IF POWER EQUIPMENT OR EXPLOSIVES ARE TO BE USED FOR EXCAVATION ON THIS PROJECT THE CONTRACTOR MUST:
- NOTIFY THE GAS COMPANY OF THE PROPOSED LOCATION OF EXCAVATION.
  - TAKE PRECAUTION TO AVOID DAMAGE TO GAS COMPANY INSTALLATIONS SEE PROVINCIAL REGULATION 210/72 FOR DETAILS.
  - OBTAIN EXCAVATION PERMITS PRIOR TO CONSTRUCTION.
  - A MINIMUM VERTICAL SEPARATION OF 300 mm FROM GAS MAINS AND 100 mm FROM GAS SERVICE MUST BE MAINTAINED BETWEEN ANY MANITOBA HYDRO FACILITY AND ANY NEW INSTALLATIONS.
  - A MINIMUM 900 mm OF COVER SHALL BE MAINTAINED IN ALL AREAS WHERE EQUIPMENT WILL BE CROSSING, TRAVELING OR COMPACTING OVER THE HIGH PRESSURE GAS MAINS.
  - IF EQUIPMENT MUST CROSS, TRAVEL, OR COMPACT OVER THE GAS MAIN WITH LESS THAN THE MINIMUM DEPTH COVER, EARTH BRIDGING OR STEEL PLATES SHALL BE PLACED OVER THE MAIN AND EXTEND A MINIMUM OF 1.0 METRE ON EITHER SIDE AT EACH CROSSING LOCATION.

G:\CAD\126606\Contract\Contract\_2\Curent\Civil\_Removials.dwg

150 WM	WATERMAIN	150 WM	MTS	M.T.S.	MTS	150 mm W.M.	WATERMAIN	150 mm W.M.
	HYDRANT VALVE			CONCRETE			HYDRANT VALVE	
	LAND DRAINAGE SEWER			CONCRETE			LAND DRAINAGE SEWER	
	WASTE WATER SEWER			CONCRETE			WASTE WATER SEWER	
	MANHOLE			CONCRETE			MANHOLE	
	CATCH BASIN			CONCRETE			CATCH BASIN	
	TEST HOLES			CONCRETE			TEST HOLES	
	JUNCTIONS			CONCRETE			JUNCTIONS	
	CULVERT			CONCRETE			CULVERT	
	100 GAS			CONCRETE			100 GAS	
	EXISTING			EXISTING			EXISTING	
	LEGEND-PLAN			LEGEND-PLAN			LEGEND-PROFILE	

**UNDERGROUND STRUCTURES**

SUPV. U/G STRUCTURES COMMITTEE DATE

NOTE:  
 LOCATION OF UNDERGROUND STRUCTURES AS SHOWN ARE BASED ON THE BEST INFORMATION AVAILABLE BUT NO GUARANTEE IS GIVEN THAT ALL EXISTING UTILITIES ARE SHOWN OR THAT THE GIVEN LOCATIONS ARE EXACT. CONFIRMATION OF EXISTENCE AND EXACT LOCATION OF ALL SERVICES MUST BE OBTAINED FROM THE INDIVIDUAL UTILITIES BEFORE PROCEEDING WITH CONSTRUCTION.

B.M. 654008	N: 5515764.610	654210	N: 5514436.957
ELEV. 232.463 m	E: 633359.697	ELEV. 630550.534	E: 630550.534
0	ISSUED FOR TENDER	13/08/08	MRD
NO.	REVISIONS	DATE	BY

DESIGNED BY	MRD
DRAWN BY	PMW
CHECKED BY	DBW
APPROVED BY	DPK
HOR. SCALE	1:500
VERTICAL	
DATE	2013/08/08

**DILLON CONSULTING**

RELEASED FOR CONSTRUCTION

ENGINEER'S SEAL

PROVINCE OF MANITOBA  
**M.R. DOUCET**  
 Member 22306  
 REGISTERED PROFESSIONAL ENGINEER

CONSULTANT PROJECT NUMBER  
**12-6606**

**THE CITY OF WINNIPEG**  
 PUBLIC WORKS DEPARTMENT

Waverley West Arterial Roads Project  
 (WWARP) PART 3 - CONTRACT 2  
 ROUTE 90 TO ROUTE 165 OVERPASS (KENASTON BLVD.)  
 AND ASSOCIATED WORKS

CITY DRAWING NUMBER  
**B242-13-61**

SHEET **61** OF **128**

CONSULTANT DRAWING NUMBER  
**P-3349-61**

REMOVALS 1 OF 3