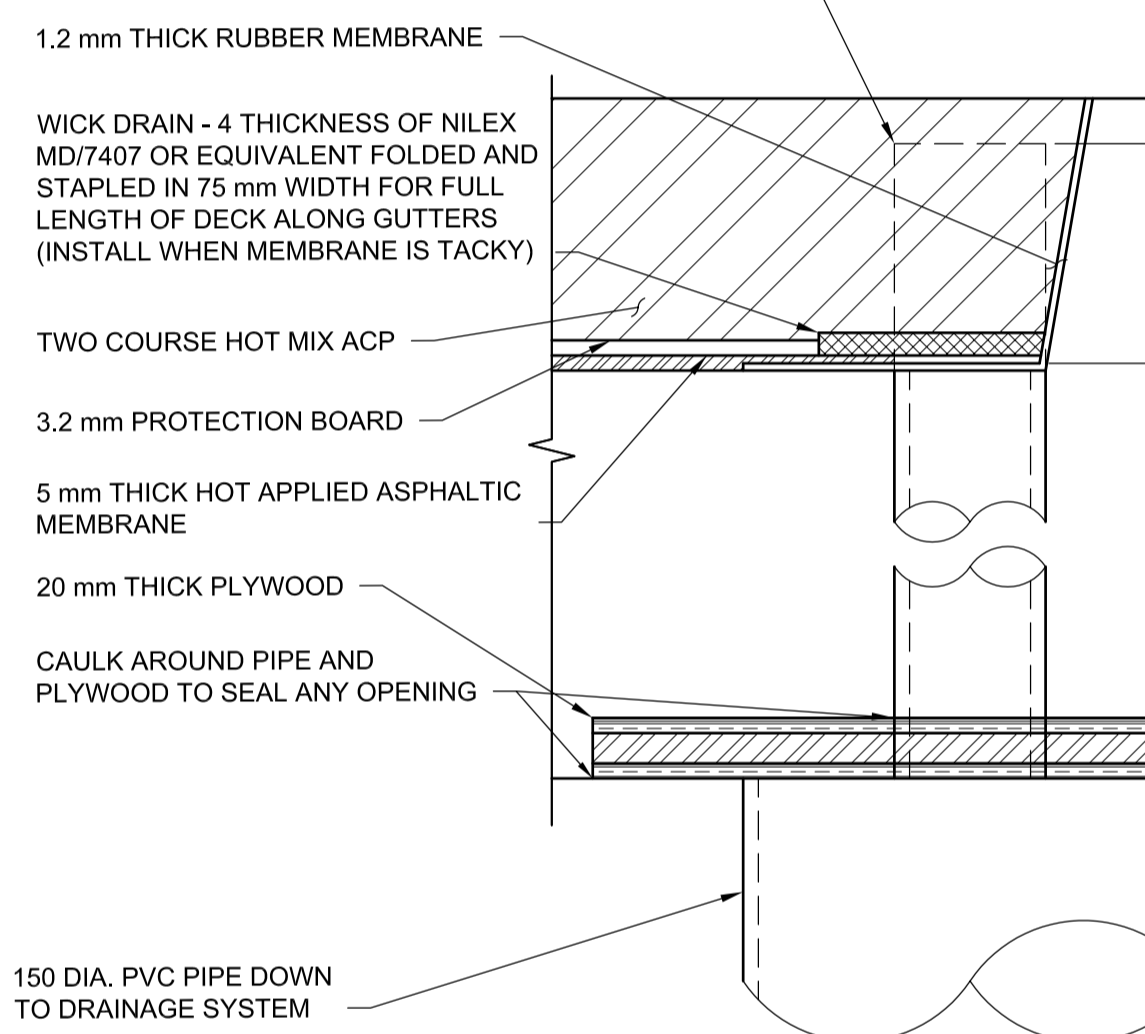
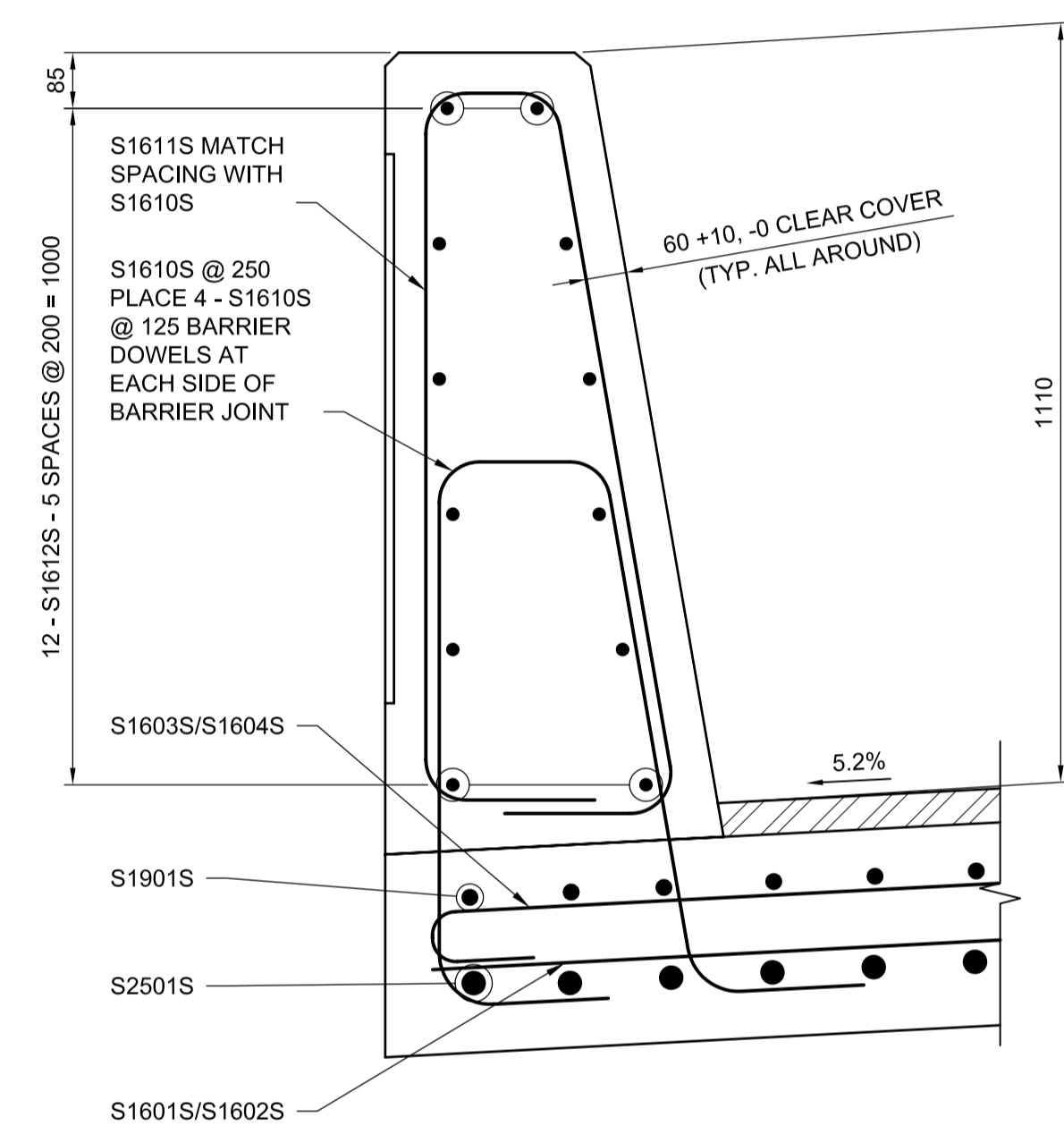


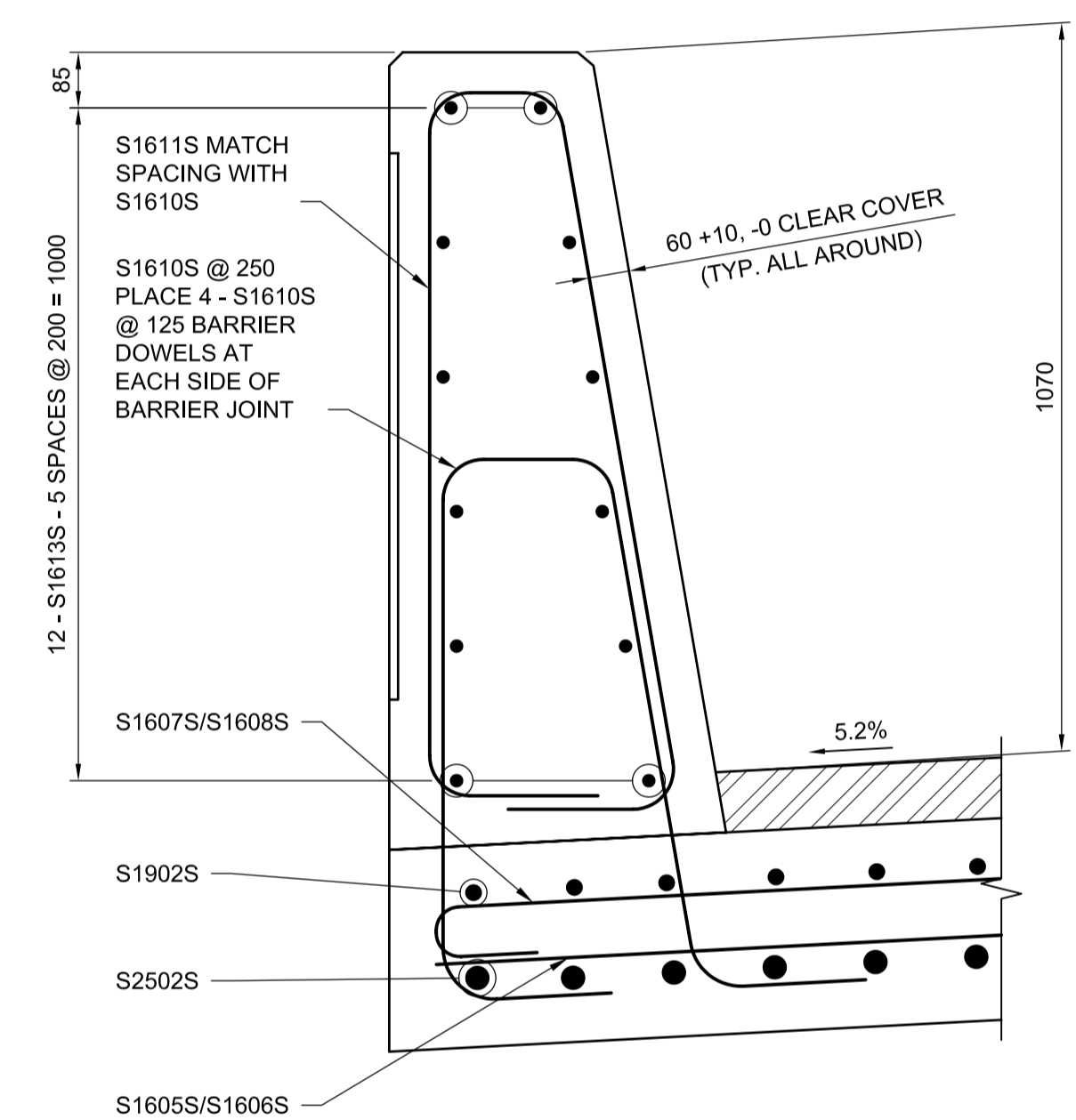
50 DIA. PVC DRAIN PIPE TRIM FLUSH WITH TOP OF CONCRETE SURFACE AFTER CONCRETE HAS SET. CUT OPEN 300 mm OF WICK DRAIN FILTER WRAP AT ENDS AND TRIM THE PLASTIC INSERT PORTION FLUSH WITH INSIDE WALL OF THE DRAIN PIPE. FOLD AND INSERT THE REMAINING FILTER WRAP INTO PVC PIPE. (TYPICAL AT LOW CORNERS OF ROOF SLABS AT GRADE BEAM.)



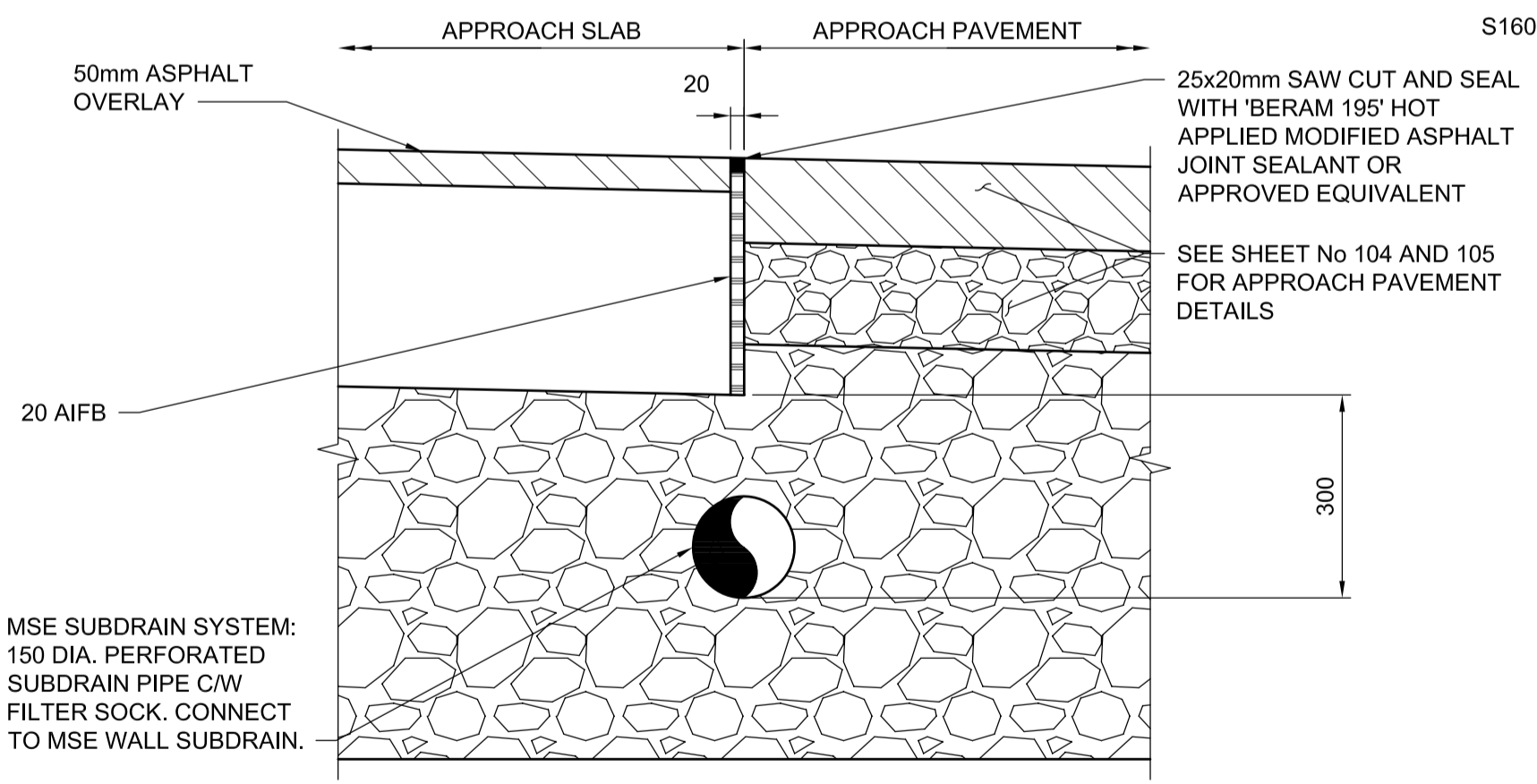
4 DETAIL 1:2.5



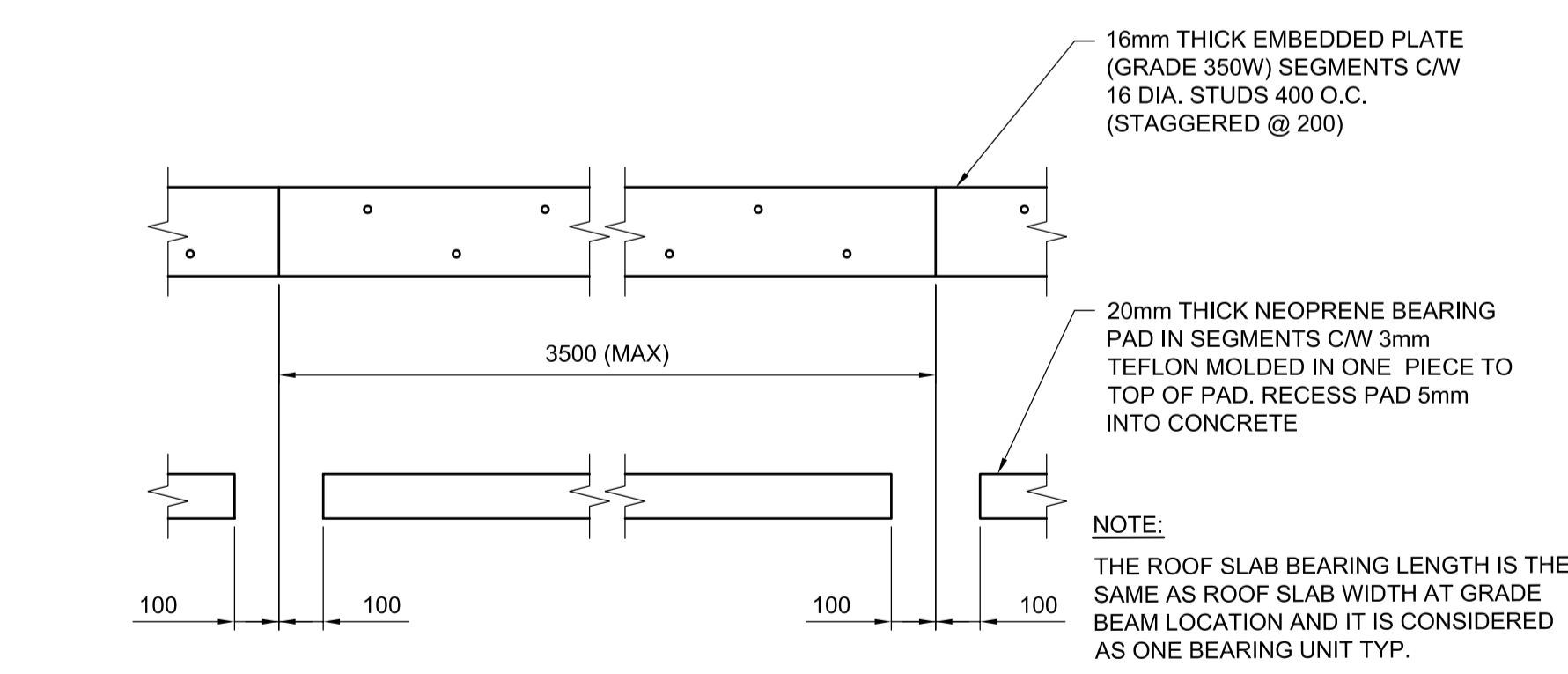
A SECTION 1:20



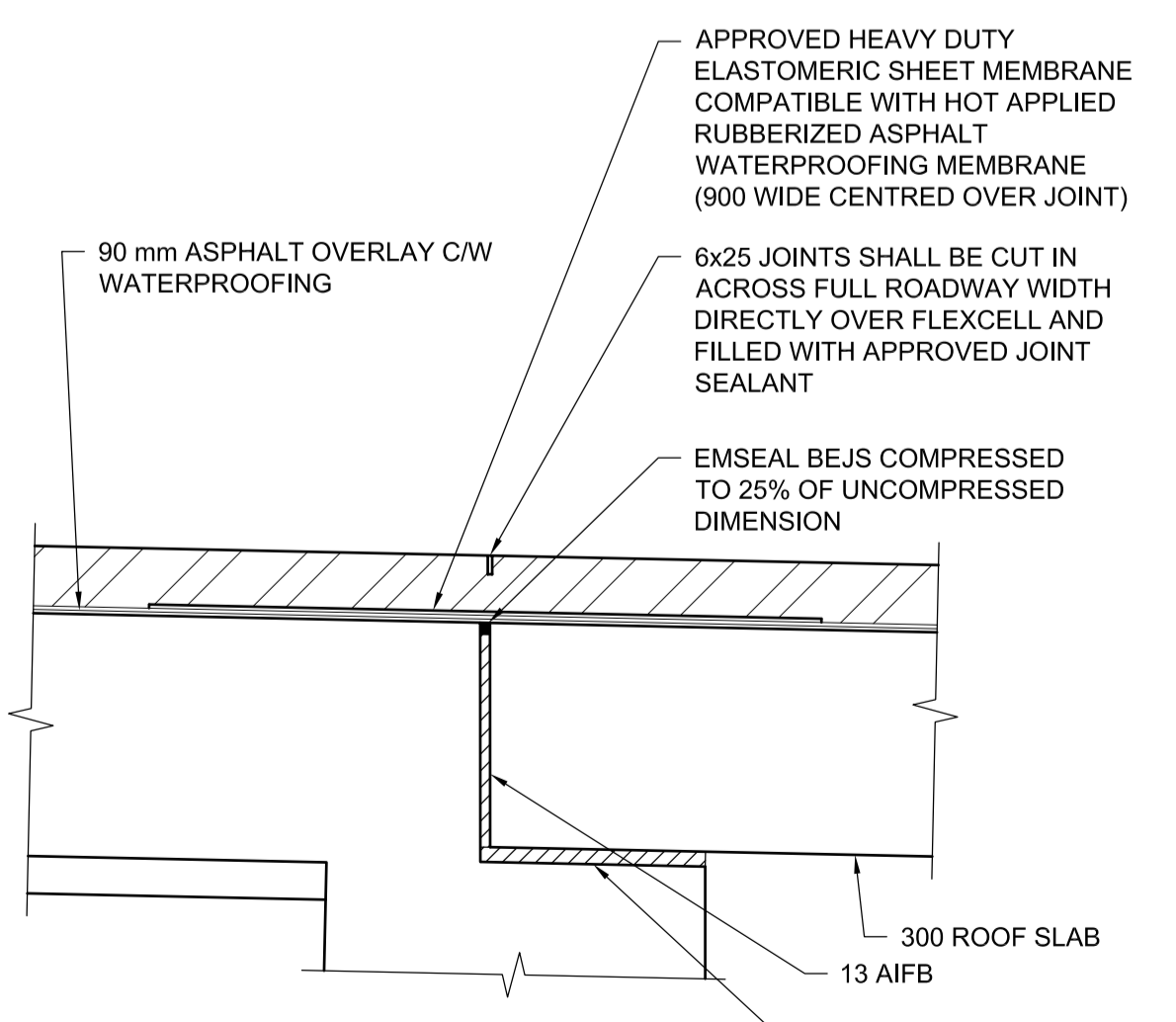
B SECTION 1:10



C SECTION 1:10



TYPICAL LAYOUT OF BEARING PAD & EMBEDDED PLATE 1:15 FOR ROOF SLAB BEARING



1 DETAIL 1:10

2 DETAIL 1:10

3 ROOF SLAB BEARING DETAIL 1:5

G:\CAD\126606\Contract\Contract_2\Current\Struct_Roof-Approach_Slabs 2 of 2.dwg

APEGM
Certificate of Authorization
Dillon Consulting Limited (MB)
No. 1789 Date: 2013/08/01

UNDERGROUND STRUCTURES	B.M. ELEV.	DESIGNED BY	ENGINEER'S SEAL
SUPV. U/G STRUCTURES COMMITTEE		KGW	K.G. WILLIS Member 33036 REGISTERED PROFESSIONAL ENGINEER
		DRAWN BY RCB	
		CHECKED BY RE	
		APPROVED BY MBL	
		HOR. SCALE AS SHOWN	
		VERTICAL AS SHOWN	
		RELEASED FOR CONSTRUCTION	
0 ISSUED FOR TENDER	13/08/08	MBL	CONSULTANT PROJECT NUMBER 12-6606
NO. REVISIONS	DATE	BY	DATE 2013/08/01

NOTE:
LOCATION OF UNDERGROUND STRUCTURES AS SHOWN ARE BASED ON THE BEST INFORMATION AVAILABLE BUT NO GUARANTEE IS GIVEN THAT ALL EXISTING UTILITIES ARE SHOWN OR THAT THE GIVEN LOCATIONS ARE EXACT. CONFIRMATION OF EXISTENCE AND EXACT LOCATION OF ALL SERVICES MUST BE OBTAINED FROM THE INDIVIDUAL UTILITIES BEFORE PROCEEDING WITH CONSTRUCTION.

DILLON CONSULTING
RELEASED FOR CONSTRUCTION

THE CITY OF WINNIPEG PUBLIC WORKS DEPARTMENT
Waverley West Arterial Roads Project (WWARP) PART 3 - CONTRACT 2
ROUTE 90 TO ROUTE 165, OVERPASS (KENASTON BLVD.) AND ASSOCIATED WORKS

CITY DRAWING NUMBER B242-13-35	SHEET 35 OF 128
CONSULTANT DRAWING NUMBER ROOF-APPROACH SLABS 2 OF 2	