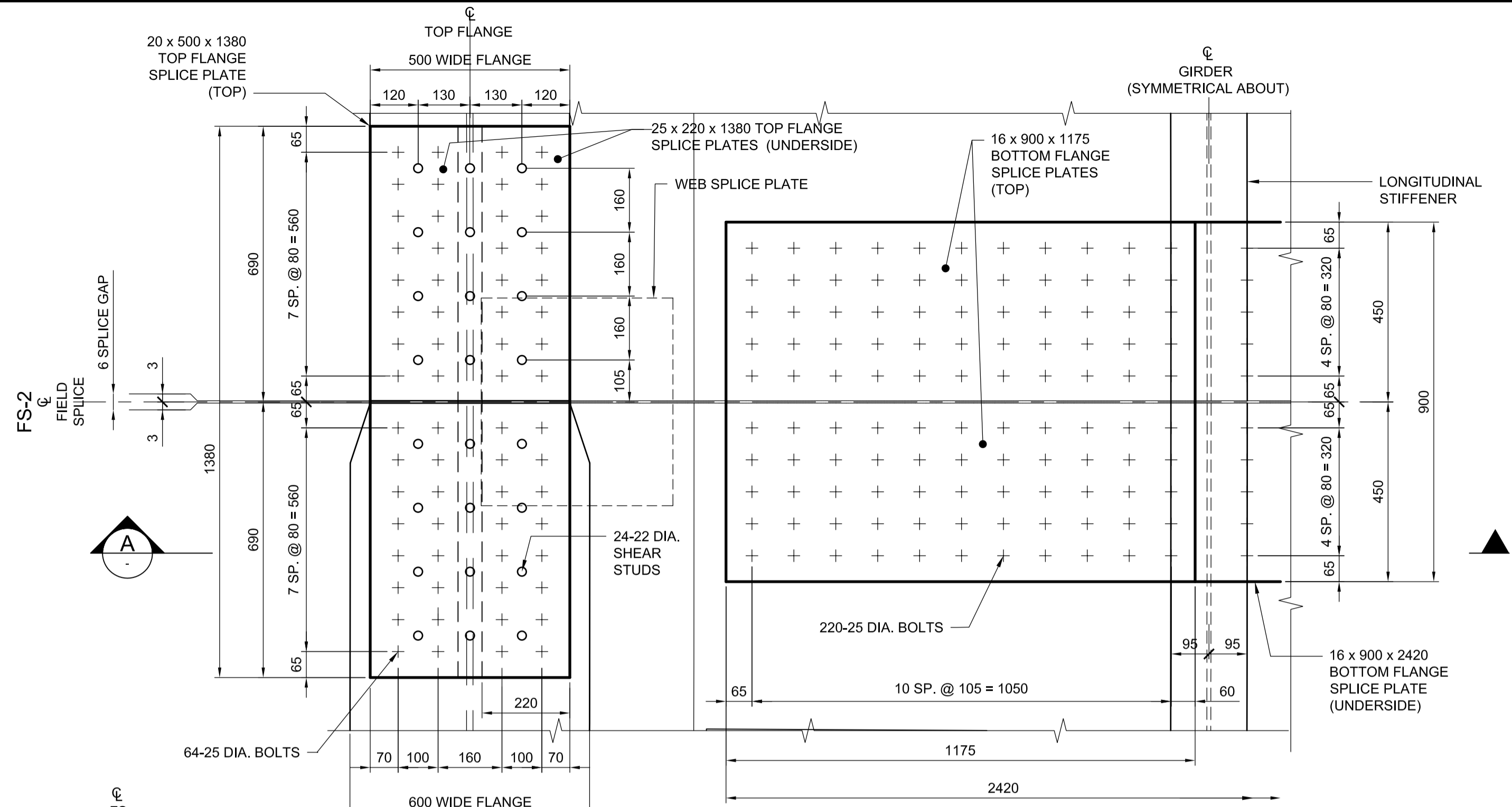
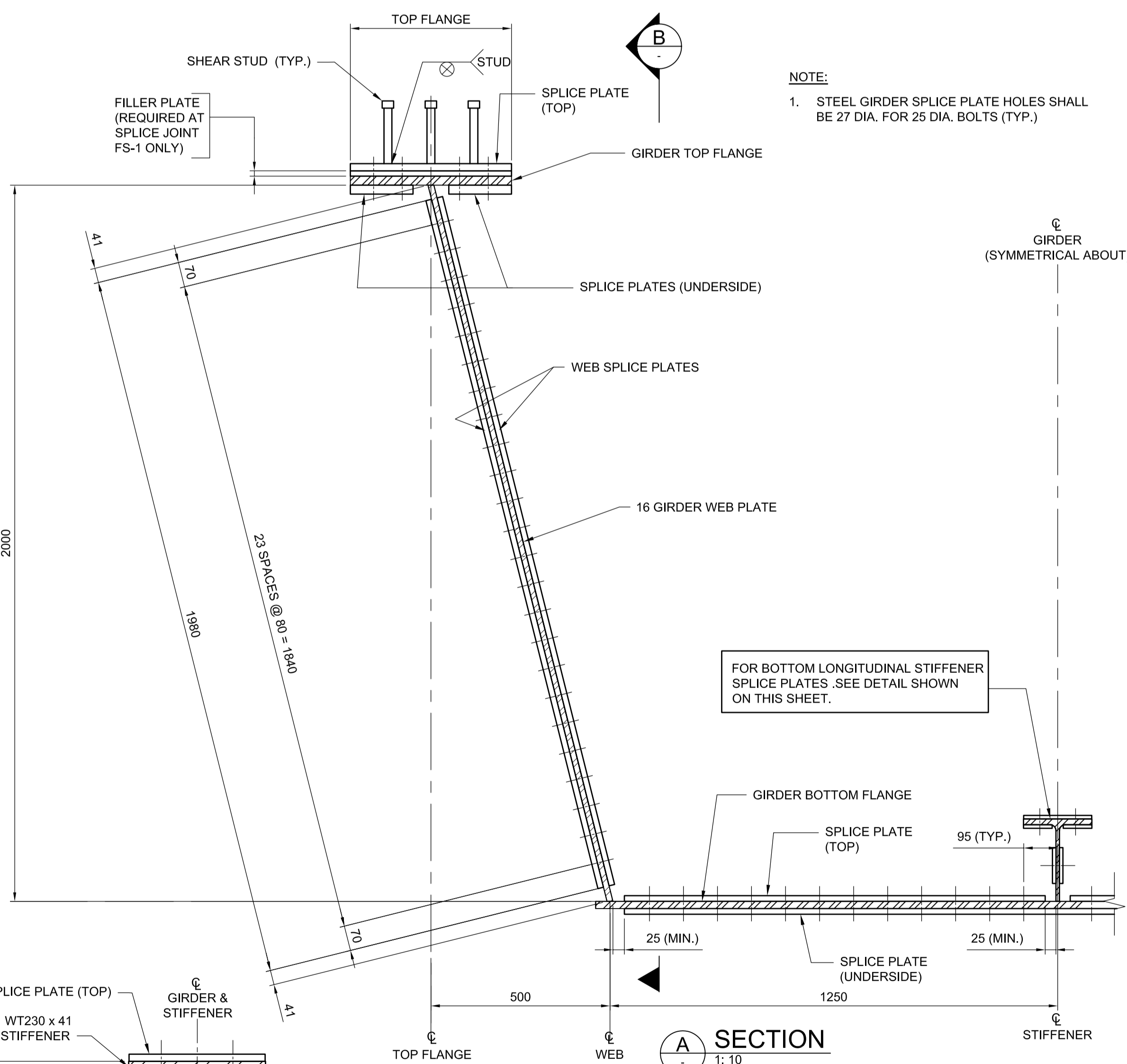


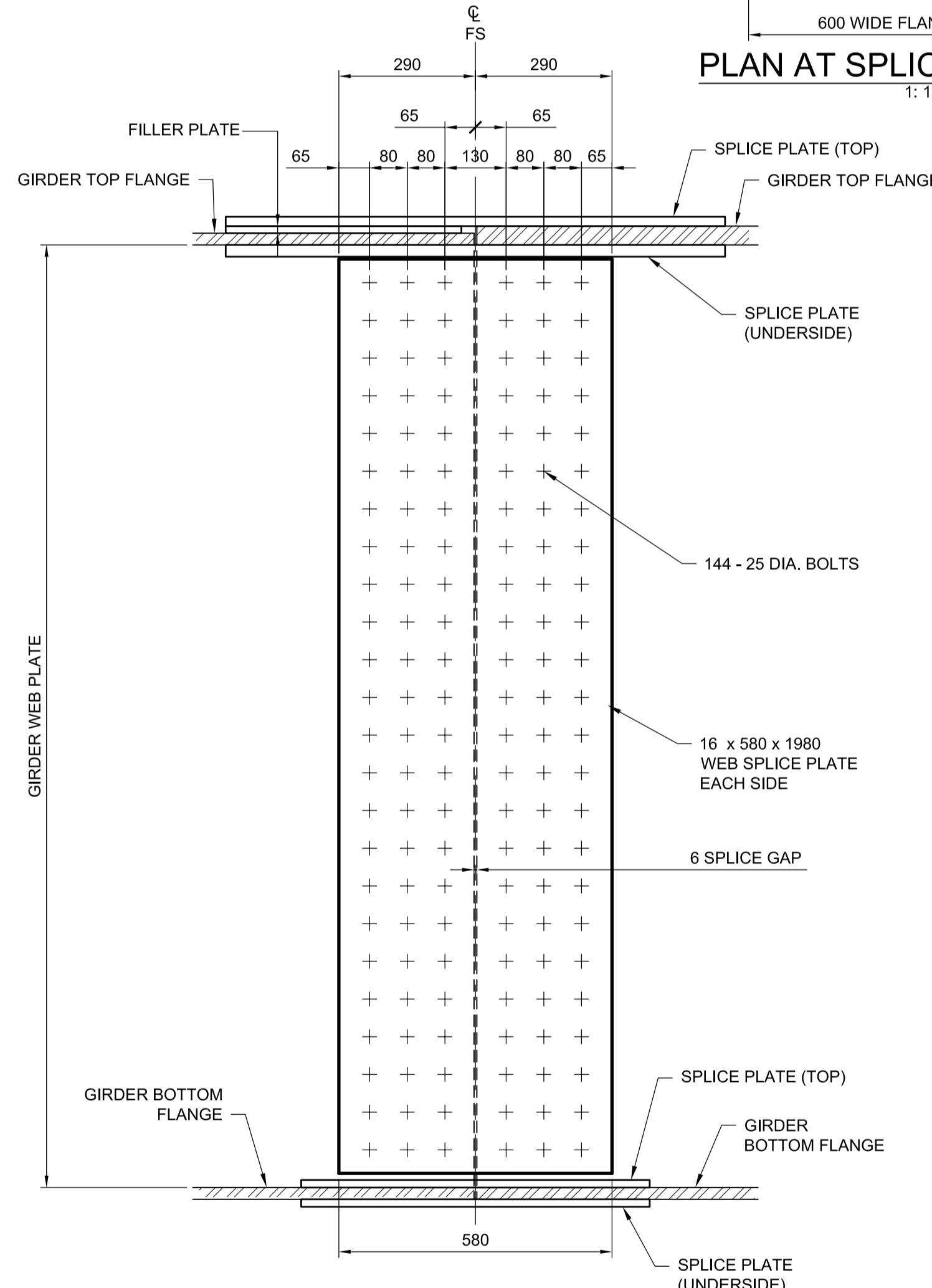
PLAN AT SPlice JOINT FS-1  
1:10



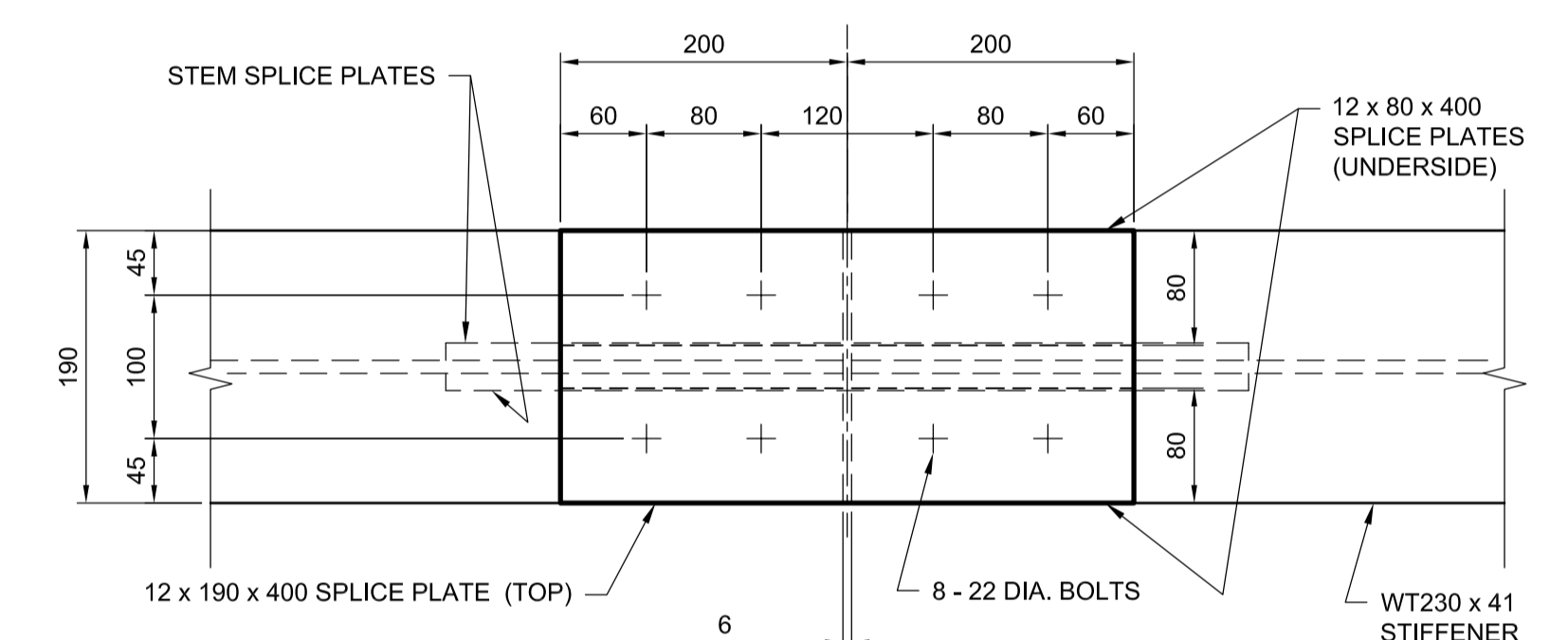
PLAN AT SPlice JOINT FS-2  
1:10



SECTION A  
1:10

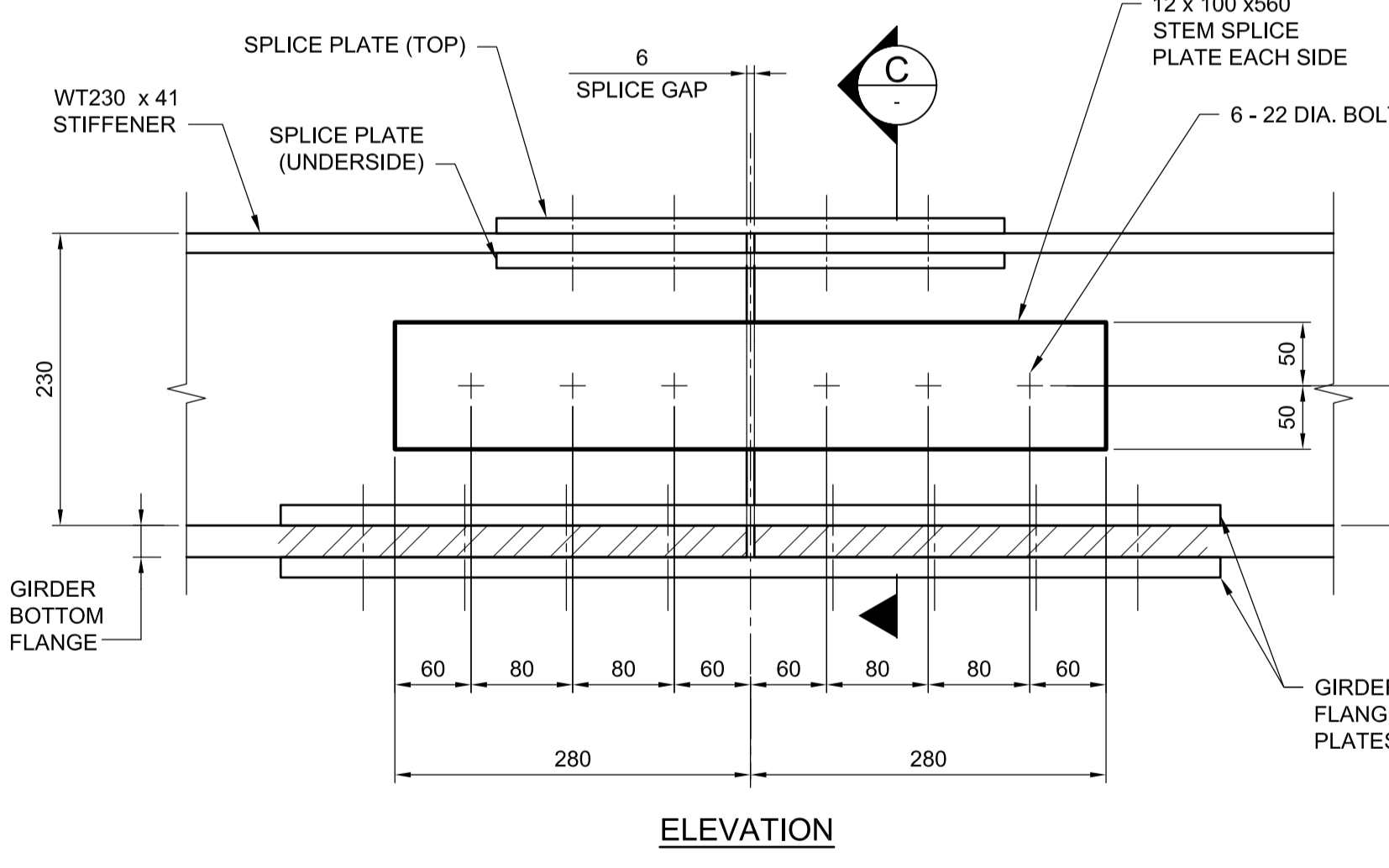


SECTION B  
1:10



PLAN

NOTE:  
1. BOTTOM LONGITUDINAL STIFFENER SPlice PLATE HOLES SHALL BE 24 DIA. FOR 22 DIA. BOLTS (TYP.)

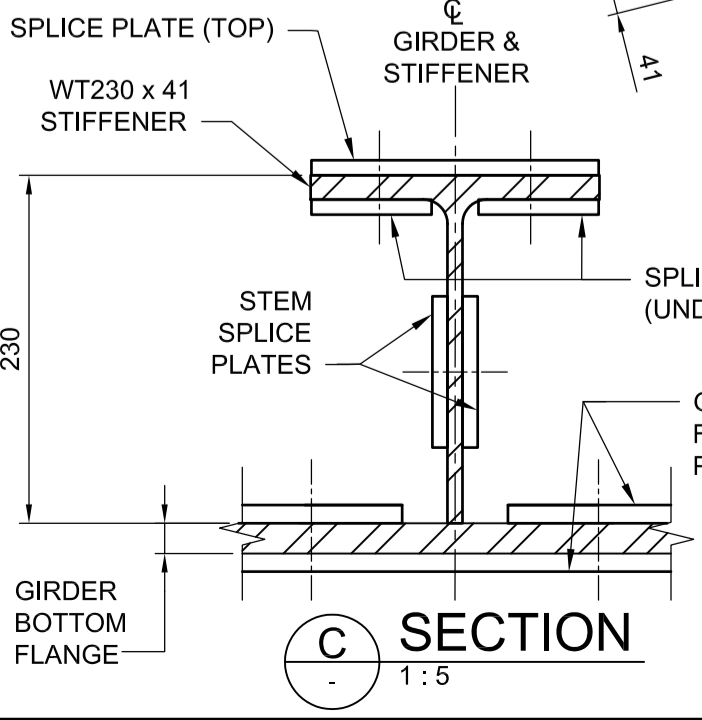


ELEVATION

GIRDER BOTTOM LONGITUDINAL STIFFENER SPlice DETAIL  
1:5  
TYPICAL FOR GIRDERS G1 AND G2

NOTE:  
1. STEEL GIRDER SPlice PLATE HOLES SHALL BE 27 DIA. FOR 25 DIA. BOLTS (TYP.)

G:\CAD\126606\Contract\contract\_2\Current\Struct\_Steel\_Girders - Girder G1 Field\_Splice\_Details.dwg



SECTION C  
1:5

**APEGM**  
Certificate of Authorization  
Dillon Consulting Limited (MB)  
No. 1789 Date: 2013/08/01

UNDERGROUND STRUCTURES		B.M. ELEV.	DESIGNED BY	RE
SUPV. U/G STRUCTURES COMMITTEE	DATE		DRAWN BY	NBG
			CHECKED BY	SSR
			APPROVED BY	MBL
			HOR. SCALE	AS SHOWN
			VERTICAL	
0	ISSUED FOR TENDER	13/08/08	DATE	2013/08/01
NO.	REVISIONS	DATE	BY	DATE

RELEASED FOR CONSTRUCTION		ENGINEER'S SEAL	ENGINEER'S SEAL
DILLON CONSULTING		PROVINCE OF MANITOBA R.B. ERIC REGISTERED PROFESSIONAL ENGINEER	PROVINCE OF MANITOBA S.S. RIHAL REGISTERED PROFESSIONAL ENGINEER
CONSULTANT PROJECT NUMBER		12-6606	

THE CITY OF WINNIPEG PUBLIC WORKS DEPARTMENT	
WAVERLEY WEST ARTERIAL ROADS PROJECT (WWARP) PART 3 - CONTRACT 2 ROUTE 90 TO ROUTE 165, OVERPASS (KENASTON BLVD.) AND ASSOCIATED WORKS	
CITY DRAWING NUMBER	B242-13-25
SHEET	25 OF 128
STEEL GIRDERS - GIRDER G1 FIELD SPlice DETAILS	
CONSULTANT DRAWING NUMBER	

UNDERGROUND STRUCTURES		B.M. ELEV.	DESIGNED BY	RE
SUPV. U/G STRUCTURES COMMITTEE	DATE		DRAWN BY	NBG
			CHECKED BY	SSR
			APPROVED BY	MBL
			HOR. SCALE	AS SHOWN
			VERTICAL	
0	ISSUED FOR TENDER	13/08/08	DATE	2013/08/01
NO.	REVISIONS	DATE	BY	DATE