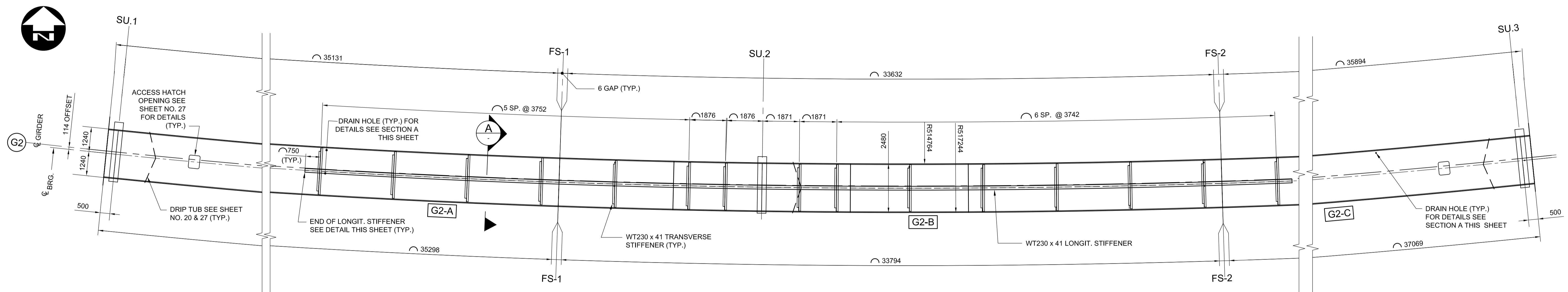
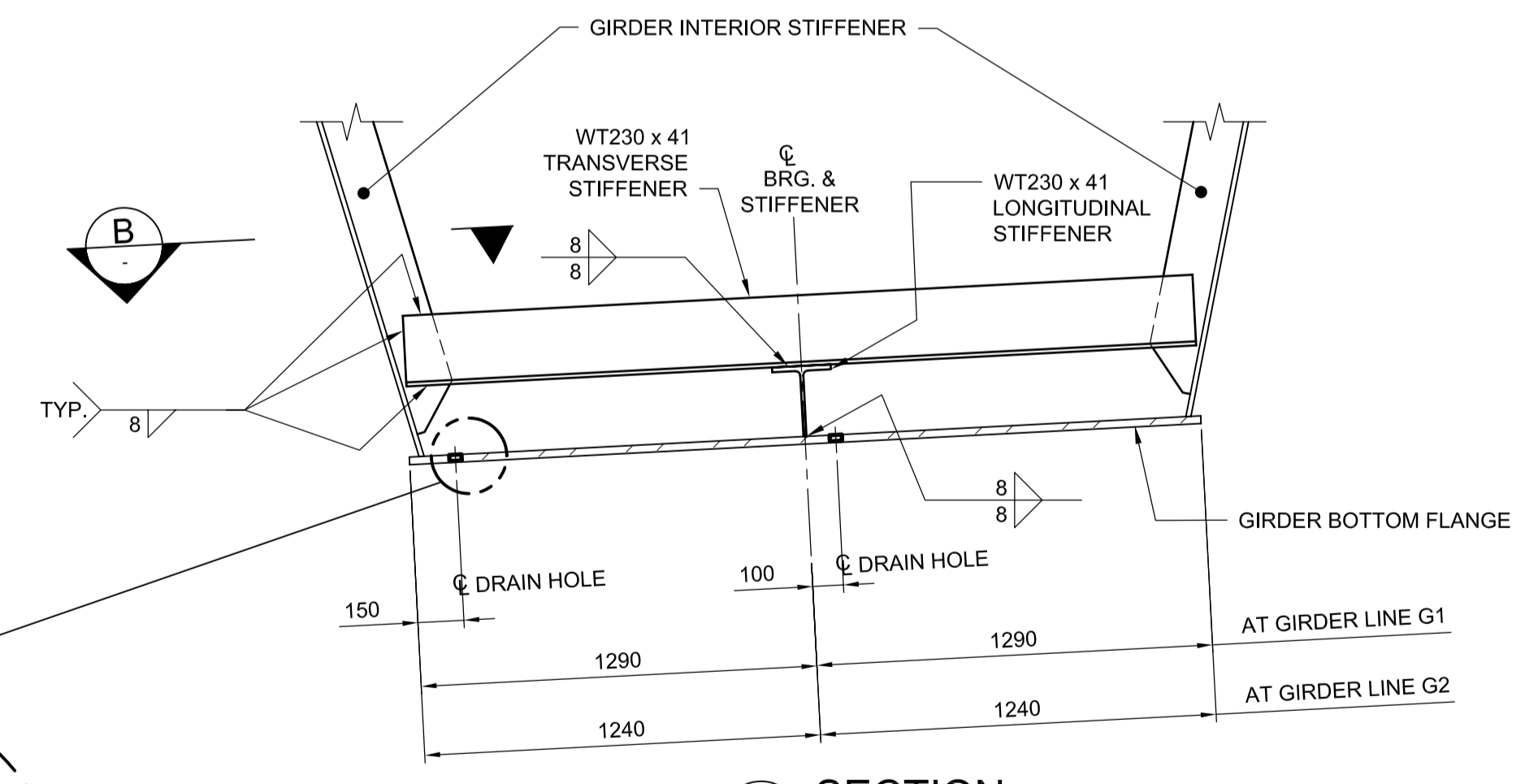


GIRDER LINE G1 - BOTTOM FLANGE PLAN
1:100

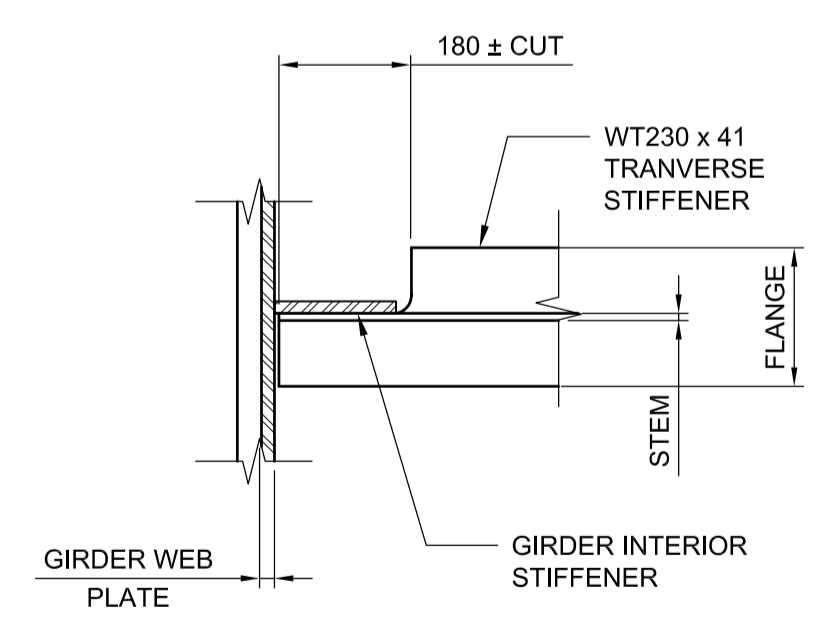


GIRDER LINE G2 - BOTTOM FLANGE PLAN
1:100

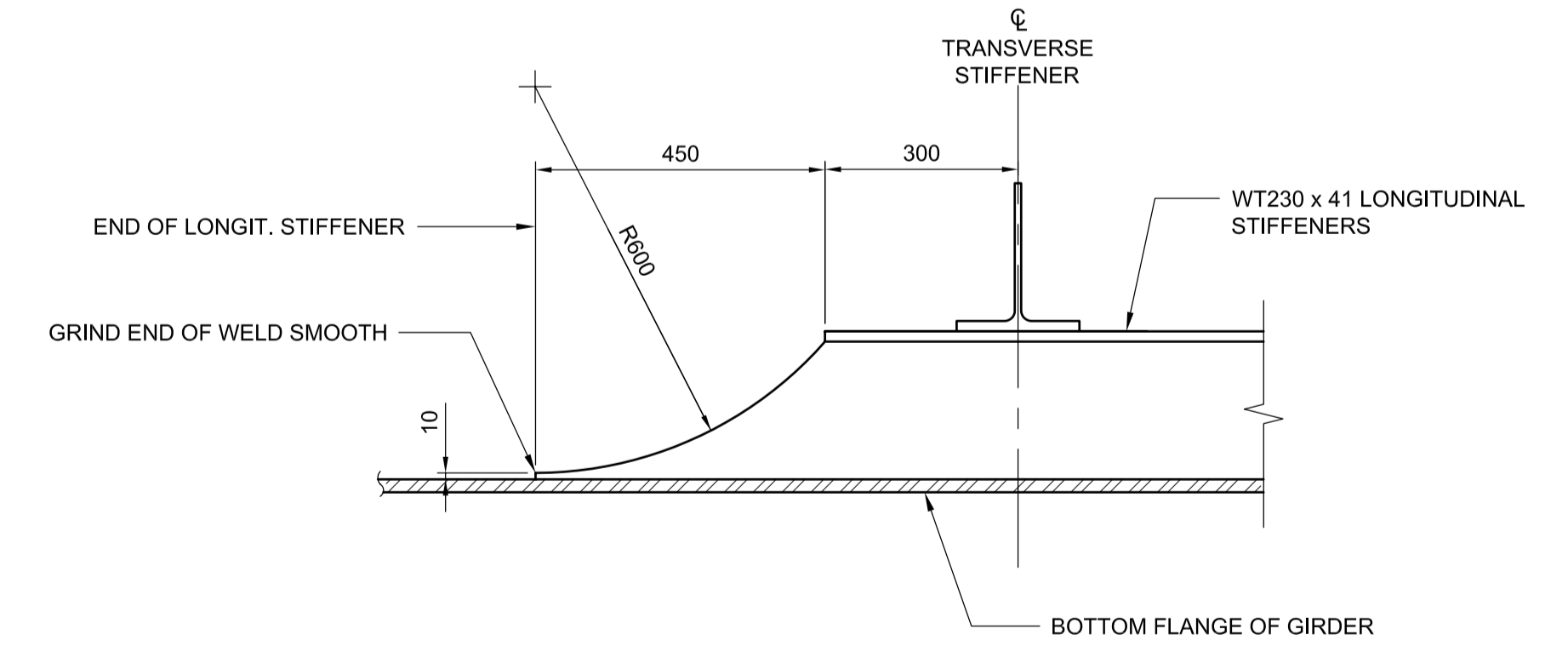
FOR LOCATIONS OF ACCESS HATCHES, DRAIN HOLES AND DRIP BARS REFER TO SHEET 27.



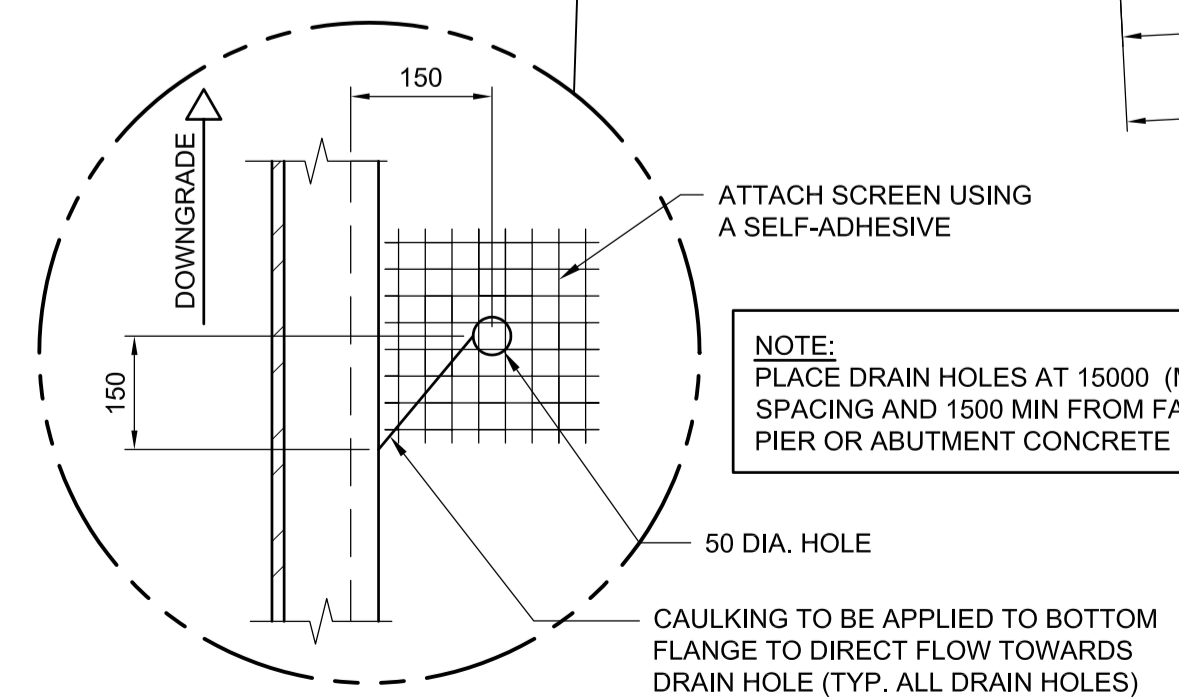
SECTION A
1:20



SECTION B
1:10



LONGITUDINAL STIFFENER END DETAIL
1:10



PLAN OF DRAIN HOLES
1:10

NOTE: PLACE DRAIN HOLES AT 15000 (MAX.) SPACING AND 1500 MIN FROM FACE OF PIER OR ABUTMENT CONCRETE

CAULKING TO BE APPLIED TO BOTTOM FLANGE TO DIRECT FLOW TOWARDS DRAIN HOLE (TYP. ALL DRAIN HOLES)

APEGM
Certificate of Authorization
Dillon Consulting Limited (MB)
No. 1789 Date: 2013/08/01

UNDERGROUND STRUCTURES	B.M. ELEV.	DESIGNED BY	RE
SUPV. U/G STRUCTURES COMMITTEE	DATE	DRAWN BY	NBG
		CHECKED BY	SSR
		APPROVED BY	MBL
		HOR. SCALE	AS SHOWN
		VERTICAL	
0 ISSUED FOR TENDER	13/08/08	DATE	2013/08/01
NO. REVISIONS	DATE	BY	DATE

RELEASED FOR CONSTRUCTION	DATE
---------------------------	------

DILLON CONSULTING

ENGINEER'S SEAL
PROVINCE OF MANITOBA
R.B. ERIC
REGISTERED PROFESSIONAL ENGINEER

ENGINEER'S SEAL
PROVINCE OF MANITOBA
S.S. RIHAL
REGISTERED PROFESSIONAL ENGINEER

THE CITY OF WINNIPEG
PUBLIC WORKS DEPARTMENT

Waverley West Arterial Roads Project (WWARP) Part 3 - Contract 2
Route 90 to Route 165, Overpass (Kenaston Blvd.) and Associated Works

CITY DRAWING NUMBER: B242-13-19
SHEET 19 OF 128
CONSULTANT DRAWING NUMBER

CONSULTANT PROJECT NUMBER: 12-6606

STEEL GIRDERS - BOTTOM FLANGE AND STIFFENER DETAILS

G:\CAD\126606\Contract\Contract_2\Current\Struct_Steel_Girders - Bottom Flange and Stiffener Details.dwg