

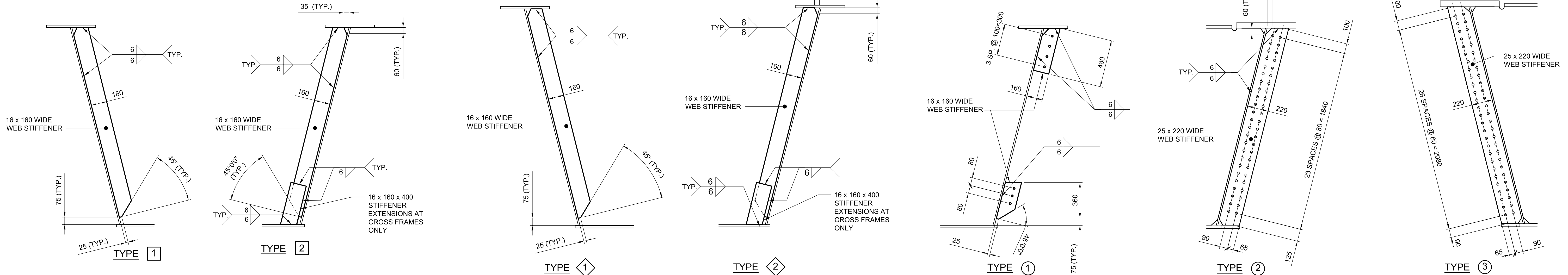
RADIAL DIMENSIONS MEASURED ALONG GIRDER LINE G2

LEGEND:

- — RADIAL DIMENSIONS
- D1 — DIAPHRAGM (ABUT. / PIER)
- CFI — CROSS FRAME
- S1 — STRUT
- L1 — LATERAL BRACING
- ① — INTERIOR WEB STIFFENER @ GIRDER LINE G1
- ② — INTERIOR WEB STIFFENER @ GIRDER LINE G2
- ③ — EXTERIOR WEB STIFFENER

GIRDER FRAMING PLAN

1:150



STIFFENER DETAILS

1:20

G:\CAD\126606\Contract\contract_2\Current\Struct_Steel\Girders - Stiffeners and Cross-Frame Layout.dwg

APEGM
 Certificate of Authorization
 Dillon Consulting Limited (MB)
 No. 1789 Date: 2013/08/01

UNDERGROUND STRUCTURES		B.M. ELEV.	DESIGNED BY	RE
SUPV. U/G STRUCTURES COMMITTEE	DATE		DRAWN BY	NBG
NOTE: LOCATION OF UNDERGROUND STRUCTURES AS SHOWN ARE BASED ON THE BEST INFORMATION AVAILABLE BUT NO GUARANTEE IS GIVEN THAT ALL EXISTING UTILITIES ARE SHOWN OR THAT THE GIVEN LOCATIONS ARE EXACT. CONFIRMATION OF EXISTENCE AND EXACT LOCATION OF ALL SERVICES MUST BE OBTAINED FROM THE INDIVIDUAL UTILITIES BEFORE PROCEEDING WITH CONSTRUCTION.			CHECKED BY	SSR
			APPROVED BY	MBL
			HOR. SCALE	AS SHOWN
			VERTICAL	
0	ISSUED FOR TENDER	13/08/08	DATE	2013/08/01
NO.	REVISIONS	DATE	BY	DATE

DILLON CONSULTING

RELEASED FOR CONSTRUCTION

ENGINEER'S SEAL
 PROVINCE OF MANITOBA
 R.B. ERIC
 MEMBER
 REGISTERED PROFESSIONAL ENGINEER

ENGINEER'S SEAL
 PROVINCE OF MANITOBA
 S.S. RIHAL
 MEMBER
 REGISTERED PROFESSIONAL ENGINEER

THE CITY OF WINNIPEG
 PUBLIC WORKS DEPARTMENT

Waverley West Arterial Roads Project (WWARP) PART 3 - CONTRACT 2
 ROUTE 90 TO ROUTE 165, OVERPASS (KENASTON BLVD.) AND ASSOCIATED WORKS

CITY DRAWING NUMBER: B242-13-17
 SHEET 17 OF 128
 CONSULTANT DRAWING NUMBER

STEEL GIRDERS - FRAMING LAYOUT

CONSULTANT PROJECT NUMBER: 12-6606