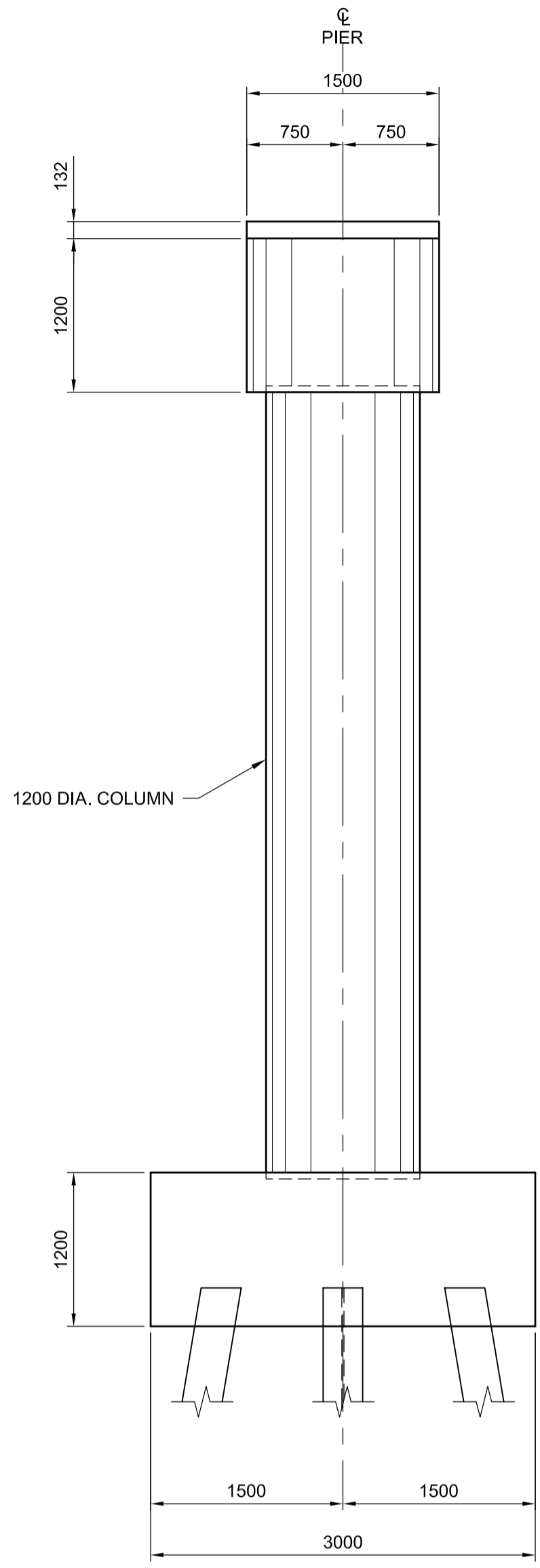
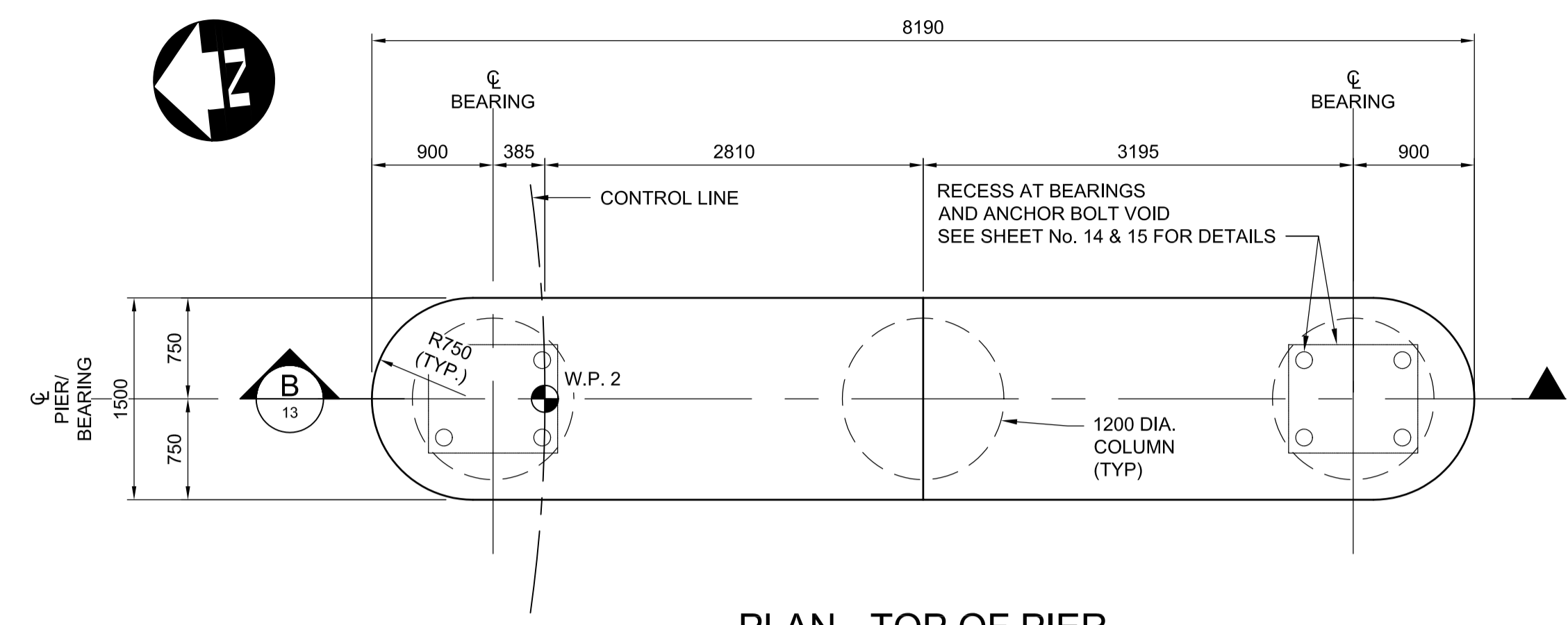


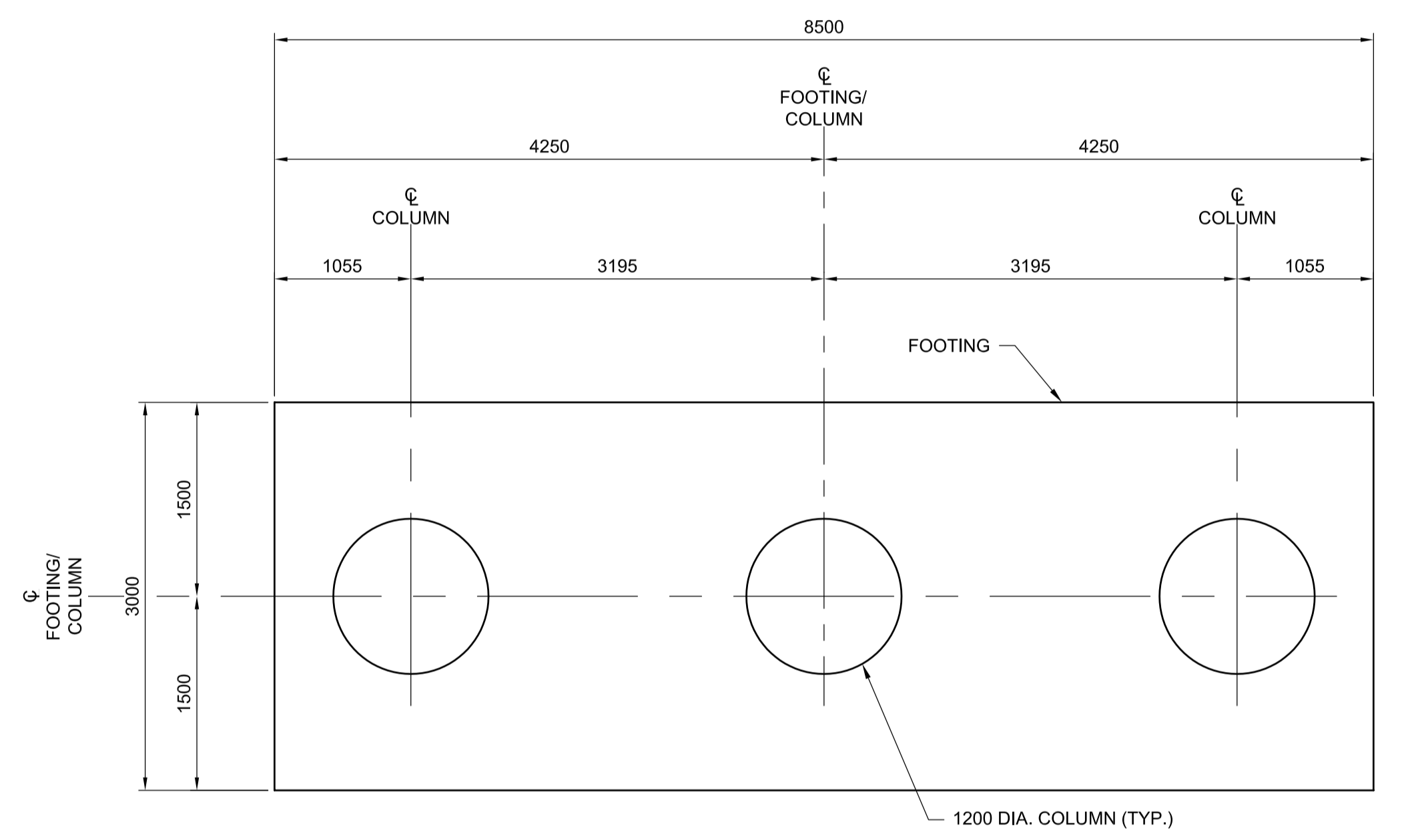
ELEVATION
1:40



SIDE ELEVATION
1:40
LOOKING SOUTH



PLAN - TOP OF PIER
1:40



A SECTION
1:40

G:\CAD\126606\Contract\contract_2\Current\Struct_Pier_SU_2_Concrete_Details.dwg

APEGM
Certificate of Authorization
Dillon Consulting Limited (MB)
No. 1789 Date: 2013/08/01

UNDERGROUND STRUCTURES	B.M. ELEV.	DESIGNED BY	KGW
SUPV. U/G STRUCTURES COMMITTEE	DATE	DRAWN BY	RCB
		CHECKED BY	RE
		APPROVED BY	MBL
		HOR. SCALE	AS SHOWN
		VERTICAL	
0 ISSUED FOR TENDER	13/08/08	DATE	2013/08/01
NO. REVISIONS	DATE	BY	DATE

NOTE: LOCATION OF UNDERGROUND STRUCTURES AS SHOWN ARE BASED ON THE BEST INFORMATION AVAILABLE BUT NO GUARANTEE IS GIVEN THAT ALL EXISTING UTILITIES ARE SHOWN OR THAT THE GIVEN LOCATIONS ARE EXACT. CONFIRMATION OF EXISTENCE AND EXACT LOCATION OF ALL SERVICES MUST BE OBTAINED FROM THE INDIVIDUAL UTILITIES BEFORE PROCEEDING WITH CONSTRUCTION.			
--	--	--	--

DILLON CONSULTING

ENGINEER'S SEAL
PROVINCE OF MANITOBA
K.G. WILLIS
Member
33036
REGISTERED PROFESSIONAL ENGINEER

ENGINEER'S SEAL
PROVINCE OF MANITOBA
S.S. RIHAL
REGISTERED PROFESSIONAL ENGINEER

CONSULTANT PROJECT NUMBER
12-6606

THE CITY OF WINNIPEG
PUBLIC WORKS DEPARTMENT

WAVERLEY WEST ARTERIAL ROADS PROJECT (WWARP) PART 3 - CONTRACT 2
ROUTE 90 TO ROUTE 165, OVERPASS (KENASTON BLVD.) AND ASSOCIATED WORKS

PIER SU. 2 CONCRETE DETAILS

CITY DRAWING NUMBER
B242-13-12

SHEET **12** OF **128**

CONSULTANT DRAWING NUMBER