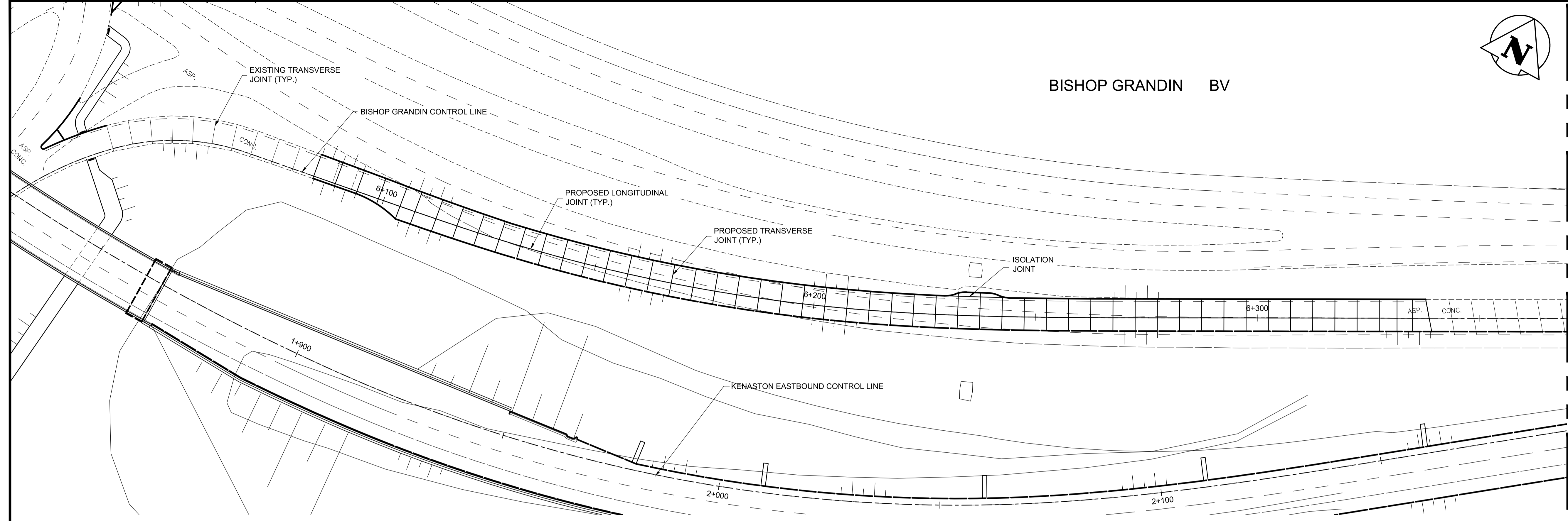
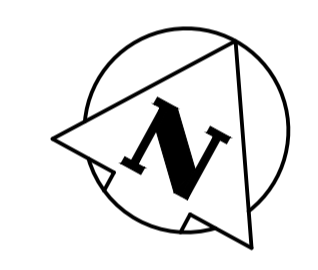


BISHOP GRANDIN BV

- CONSTRUCTION NOTES:
1. MATCH ADJACENT TRANSVERSE JOINTS OR SET TRANSVERSE JOINTS AT NOMINAL SPACING OF 5m.
 2. ALL NEW TRANSVERSE JOINTS SHALL UTILIZE STRAIGHT DOWEL ASSEMBLIES, NOT SKEWED.



MATCHLINE AT STA: 1+805



BISHOP GRANDIN BV

APEGM
 Certificate of Authorization
 Dillon Consulting Limited (MB)
 No. 1789 Date: 2013/08/08

METRIC

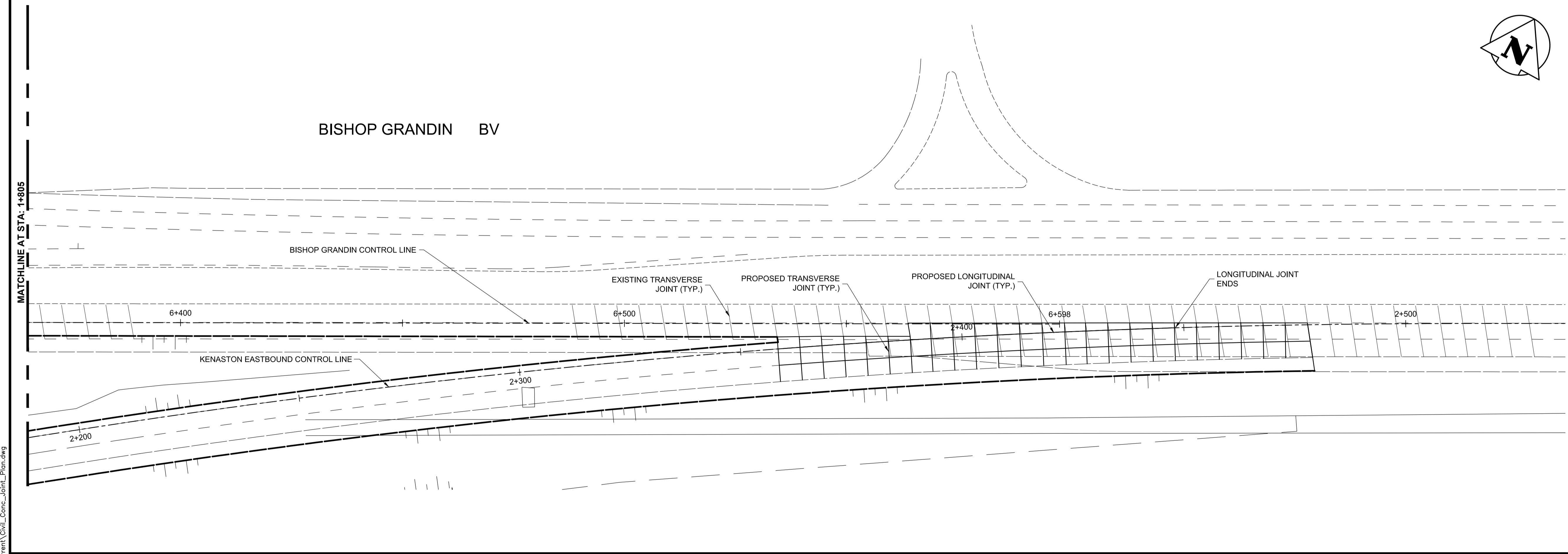
WHOLE NUMBERS INDICATE MILLIMETRES
DECIMALIZED NUMBERS INDICATE METRES

WARNING

IF POWER EQUIPMENT OR EXPLOSIVES ARE TO BE USED FOR EXCAVATION ON THIS PROJECT THE CONTRACTOR MUST:

1. NOTIFY THE GAS COMPANY OF THE PROPOSED LOCATION OF EXCAVATION.
2. TAKE PRECAUTION TO AVOID DAMAGE TO GAS COMPANY INSTALLATIONS SEE PROVINCIAL REGULATION 210/72 FOR DETAILS.
3. OBTAIN EXCAVATION PERMITS PRIOR TO CONSTRUCTION.
4. A MINIMUM VERTICAL SEPARATION OF 300 mm FROM GAS MAINS AND 100 mm FROM GAS SERVICE MUST BE MAINTAINED BETWEEN ANY MANITOBA HYDRO FACILITY AND ANY NEW INSTALLATIONS.
5. A MINIMUM 900 mm OF COVER SHALL BE MAINTAINED IN ALL AREAS WHERE EQUIPMENT WILL BE CROSSING, TRAVELING OR COMPACTING OVER THE HIGH PRESSURE GAS MAINS.
6. IF EQUIPMENT MUST CROSS, TRAVEL, OR COMPACT OVER THE GAS MAIN WITH LESS THAN THE MINIMUM DEPTH COVER, EARTH BRIDGING OR STEEL PLATES SHALL BE PLACED OVER THE MAIN AND EXTEND A MINIMUM OF 1.0 METRE ON EITHER SIDE AT EACH CROSSING LOCATION.

MATCHLINE AT STA: 1+805



G:\CAD\126606\Contract\Contract_2\Current\Civil\Conc_Joint_Plan.dwg

150 WM	WATERMAIN	150 WM	MTS	M.T.S.	MTS	150 mm W.M.	WATERMAIN	150 mm W.M.
+	HYDRANT	+	MTS	CONCRETE	+	+	HYDRANT	+
+	VALVE	+	MTS	ASPHALT	+	+	VALVE	+
300 LDS	LAND DRAINAGE SEWER	300 LDS	MTS	PLANNING	300 mm L.D.S.	300 mm L.D.S.	LAND DRAINAGE SEWER	300 mm L.D.S.
250 WWS	WASTE WATER SEWER	250 WWS	MTS	PAVING STONES	250 mm W.W.S.	250 mm W.W.S.	WASTE WATER SEWER	250 mm W.W.S.
○	MANHOLE	●	MTS	SIDEWALK	---	---	MANHOLE	○
○	CATCH BASIN	■	MTS	PROPERTY LINE	---	---	CATCH BASIN	□
○	TEST HOLES	⊕	MTS	PAVING STONES	---	---	TEST HOLES	⊕
+	JUNCTIONS	+	MTS	SURVEY BAR	---	---	JUNCTIONS	+
+	CULVERT	+	MTS	CURB RAMP	---	---	CULVERT	+
100 GAS	GAS	100 GAS	MTS	DITCH	---	---	GAS	○
100 GAS	GAS	100 GAS	MTS	SWALE	---	---	GAS	○
EXISTING	LEGEND-PLAN	PROPOSED	EXISTING	LEGEND-PLAN	PROPOSED	EXISTING	LEGEND-PROFILE	PROPOSED

UNDERGROUND STRUCTURES

SUPV. U/G STRUCTURES COMMITTEE DATE

NOTE:
 LOCATION OF UNDERGROUND STRUCTURES AS SHOWN ARE BASED ON THE BEST INFORMATION AVAILABLE BUT NO GUARANTEE IS GIVEN THAT ALL EXISTING UTILITIES ARE SHOWN OR THAT THE GIVEN LOCATIONS ARE EXACT. CONFIRMATION OF EXISTENCE AND EXACT LOCATION OF ALL SERVICES MUST BE OBTAINED FROM THE INDIVIDUAL UTILITIES BEFORE PROCEEDING WITH CONSTRUCTION.

B.M. 654008	N: 5515764.610	654210	N: 5514436.957
E: 633359.697		E: 630550.534	
ELEV. 232.463 m			
0	ISSUED FOR TENDER	13/08/08	MRD
NO.	REVISIONS	DATE	BY

DESIGNED BY	MRD
DRAWN BY	PMW
CHECKED BY	DBW
APPROVED BY	DPK
HOR. SCALE	1:500
VERTICAL	
DATE	2013/08/08

DESIGN TEAM

RELEASED FOR CONSTRUCTION

DATE

ENGINEER'S SEAL

PROVINCE OF MANITOBA

M.R.

DOUCET

Member 22306

REGISTERED PROFESSIONAL ENGINEER

CONSULTANT PROJECT NUMBER

12-6606

THE CITY OF WINNIPEG
 PUBLIC WORKS DEPARTMENT

Waverley West Arterial Roads Project
 (WWARP) PART 3 - CONTRACT 2
 ROUTE 90 TO ROUTE 165 OVERPASS (KENASTON BLVD.)
 AND ASSOCIATED WORKS

CITY DRAWING NUMBER
 B242-13- 109

SHEET
 109 OF 128

CONSULTANT DRAWING NUMBER
 P-3349-109

CONCRETE JOINT PLAN 2 OF 2